

# Índice ASBRAM

Desempenho Março/2026

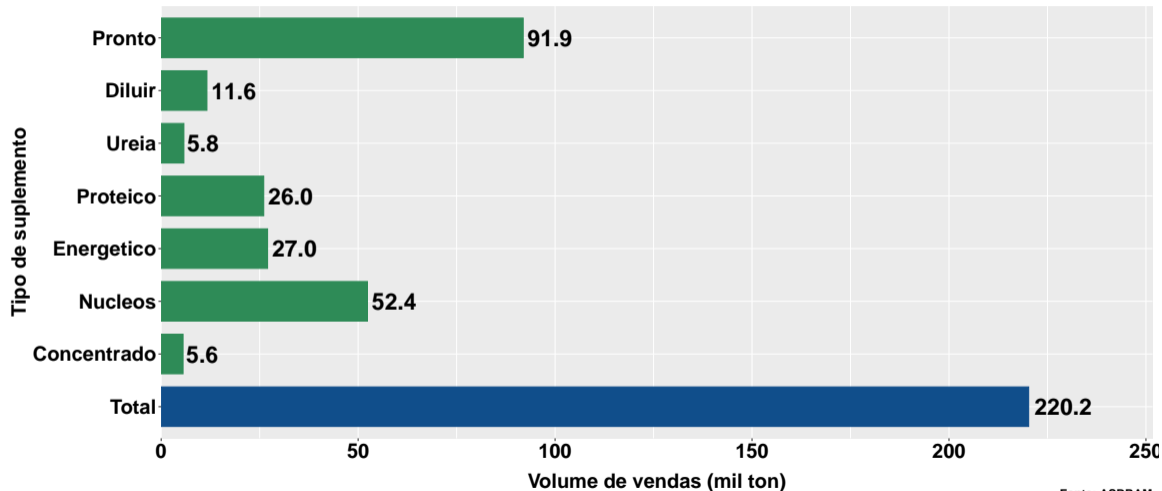
São Paulo, 16/04/2026

- 1 **Volume de vendas de suplementos no Brasil**
- 2 **Número de animais suplementados no Brasil**
- 3 **Desempenho por Unidade da Federação (UF)**

## Section 1

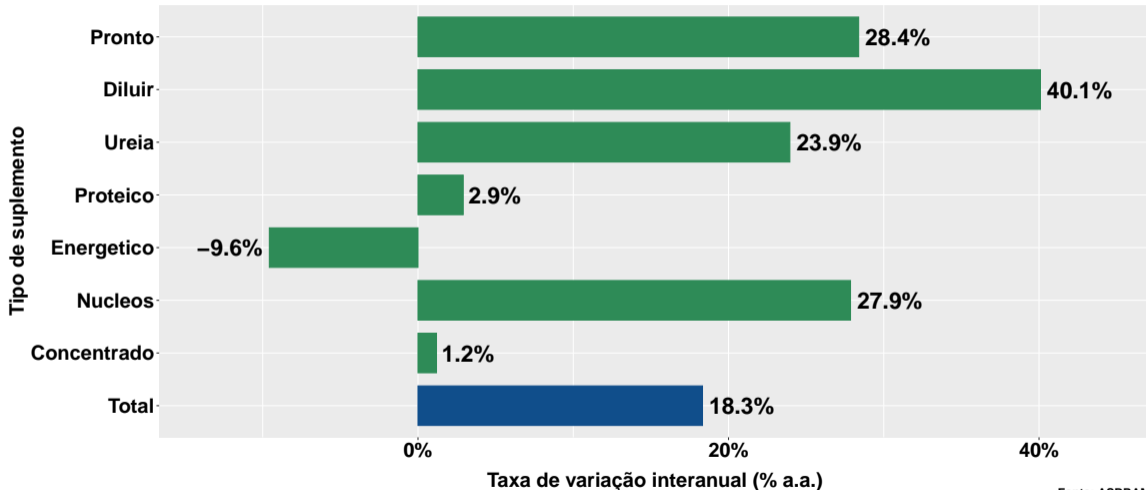
# Volume de vendas de suplementos no Brasil

# Volume de vendas no mês



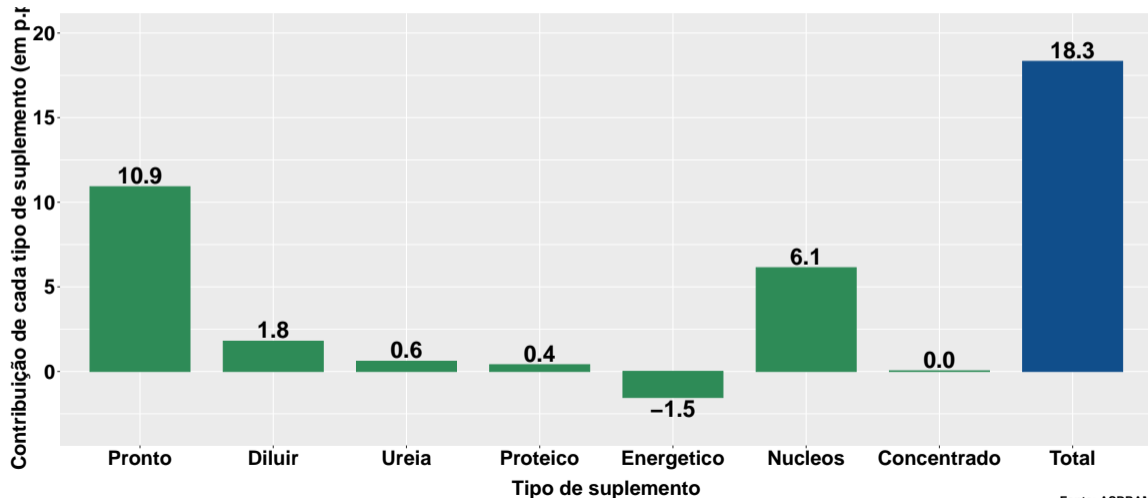
Fonte: ASBRAM

## Variação interanual do volume de vendas

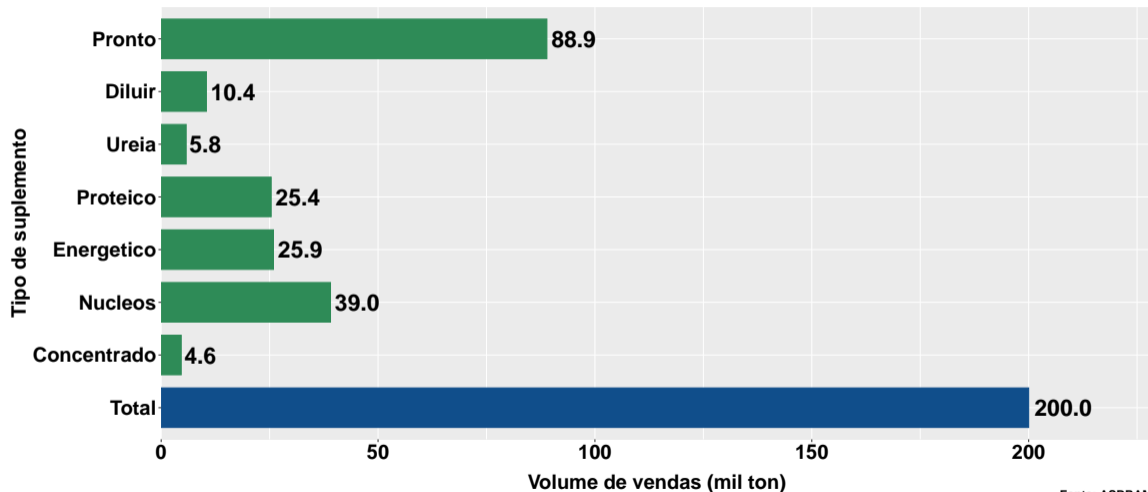


Fonte: ASBRAM

## Contribuição de cada suplemento para variação interanual do volume de vendas

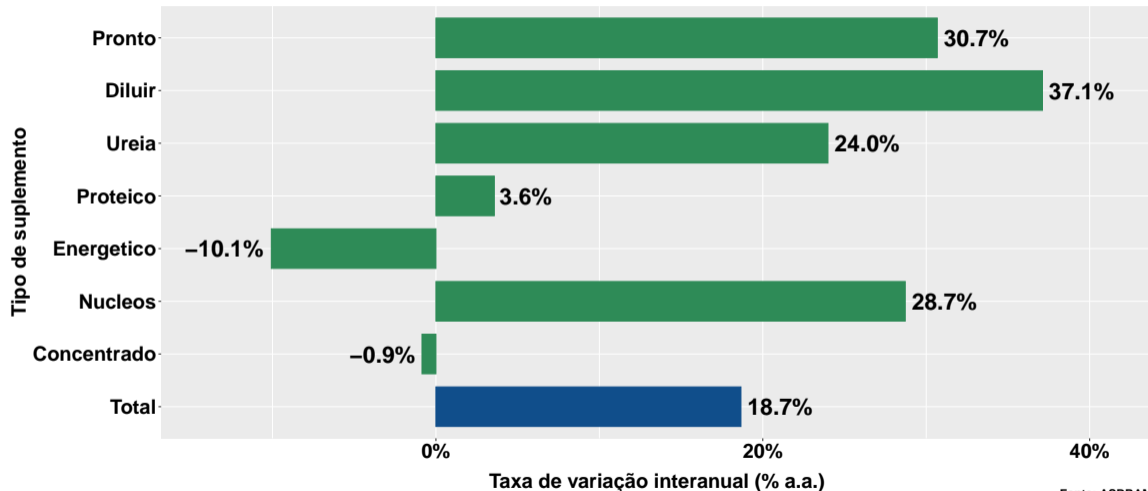


## Volume de vendas no mês - corte



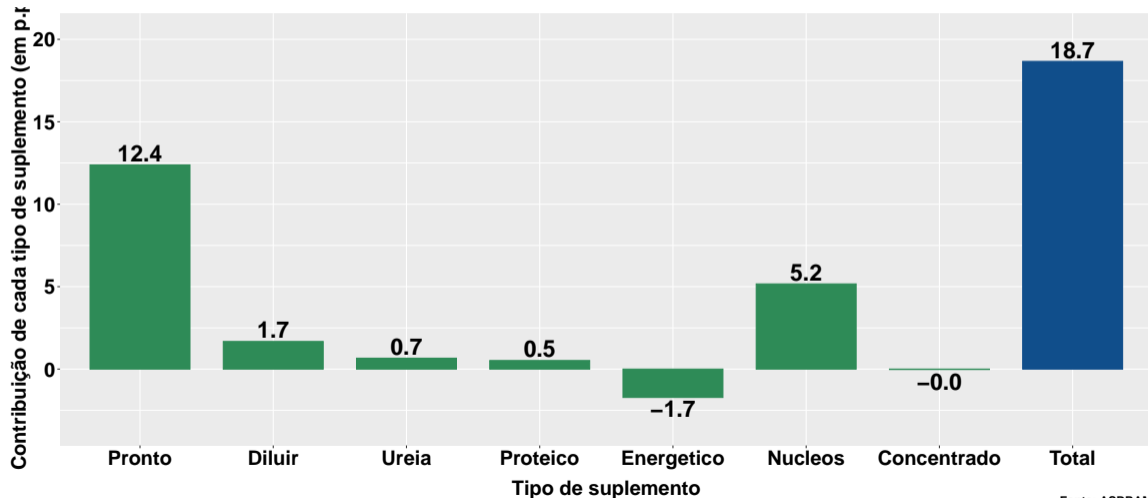
Fonte: ASBRAM

## Variação interanual do volume de vendas - corte

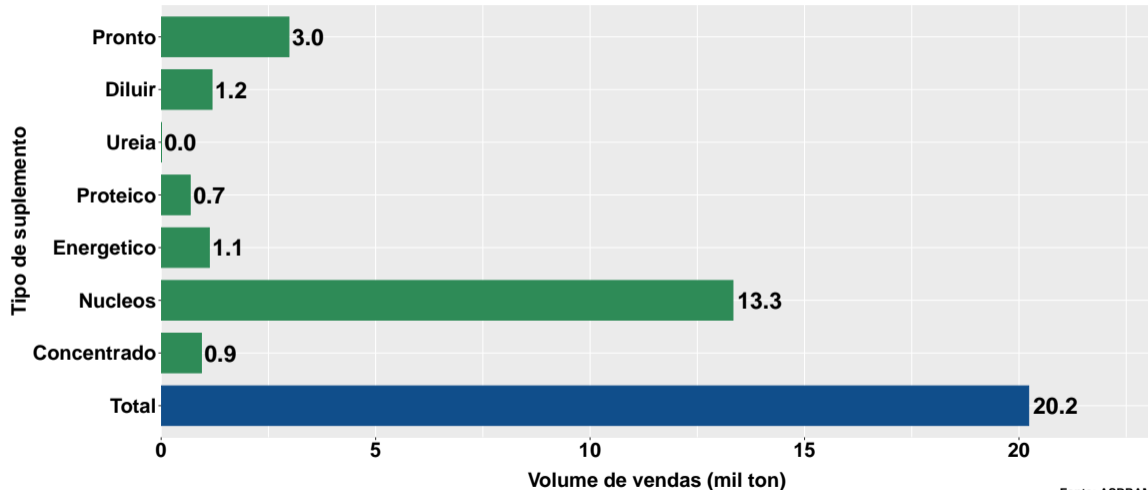


Fonte: ASBRAM

# Contr. suplemento para variação interanual do volume de vendas - corte

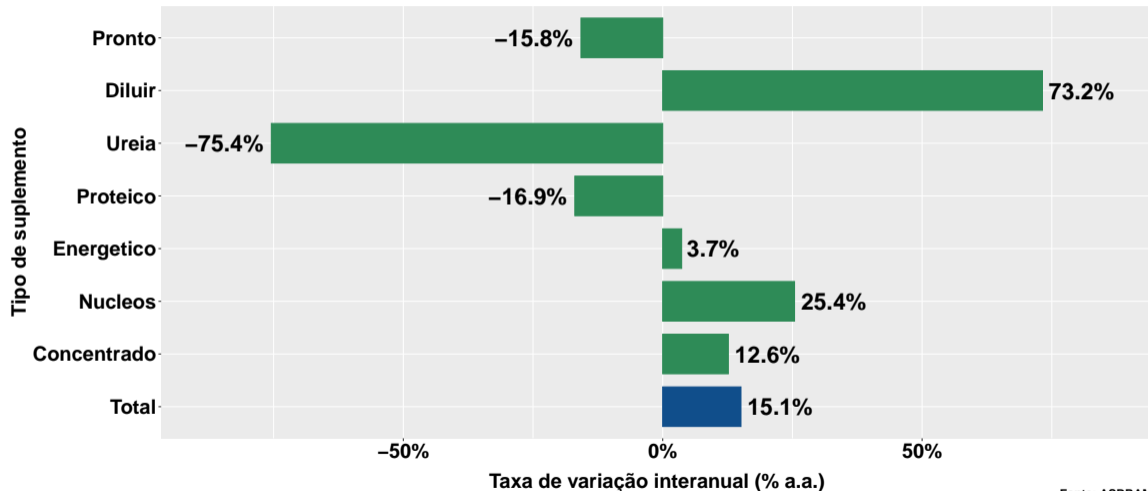


# Volume de vendas no mês - leite



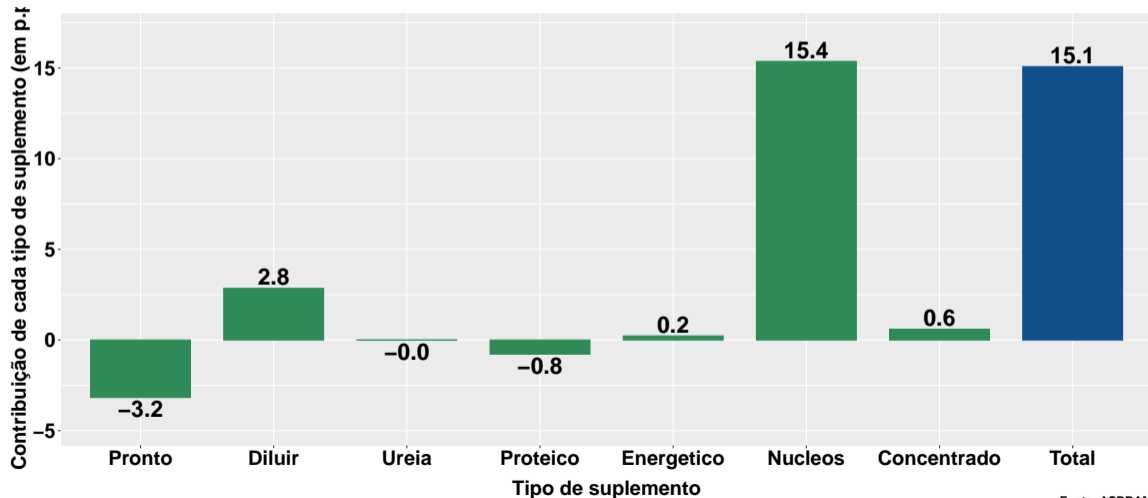
Fonte: ASBRAM

## Variação interanual do volume de vendas - leite

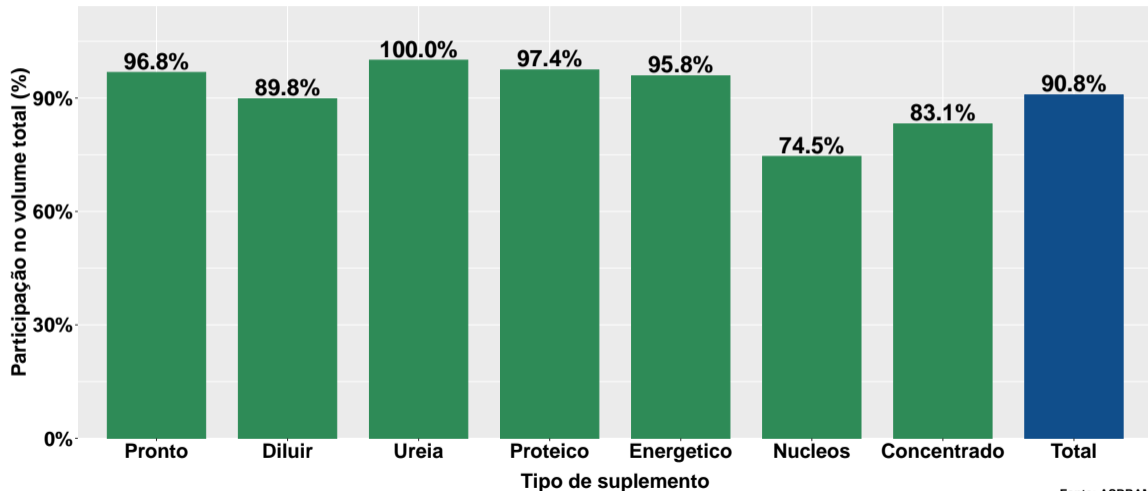


Fonte: ASBRAM

# Contr. suplemento para variação interanual do volume de vendas - leite

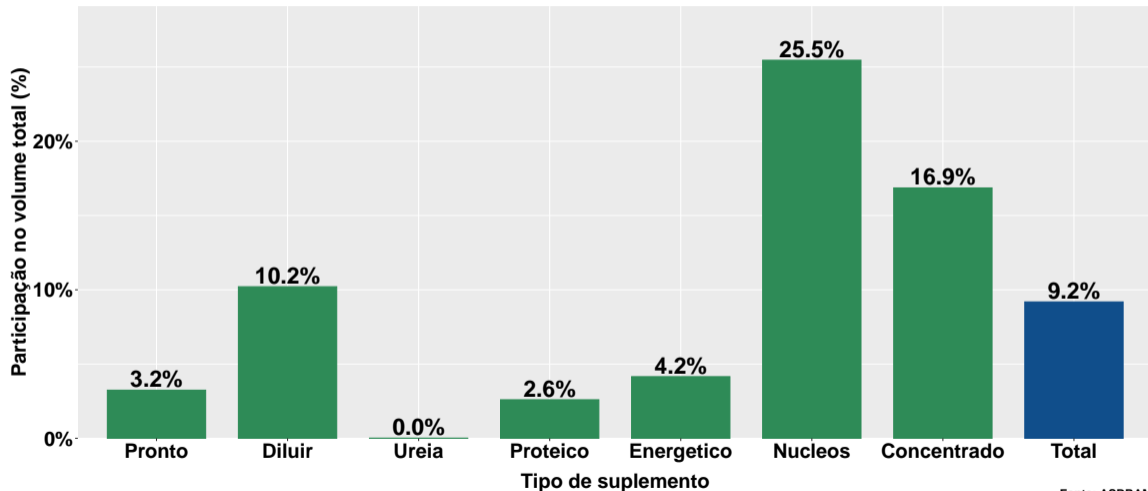


## Part. pecuária corte no volume total - no mês



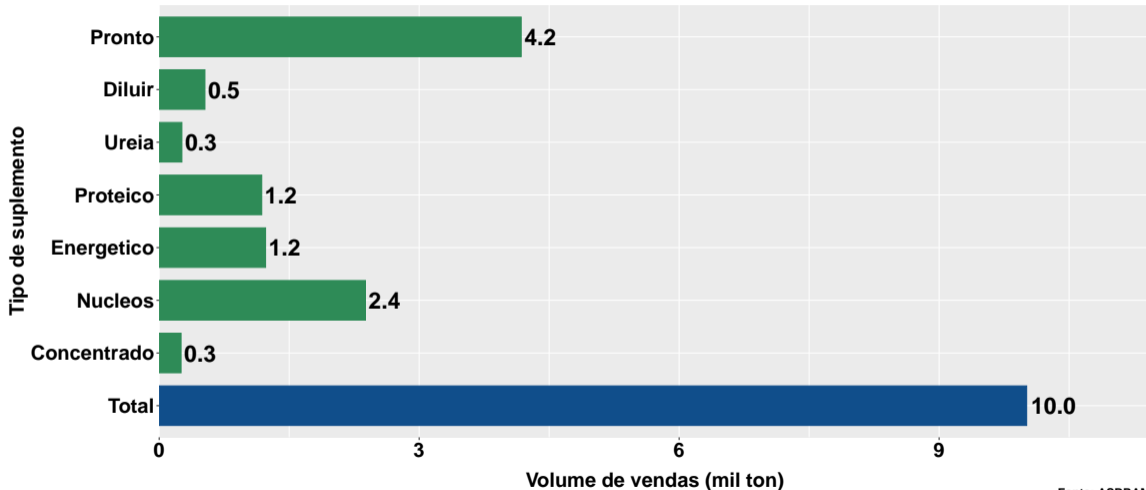
Fonte: ASBRAM

## Part. pecuária leite no volume total - no mês



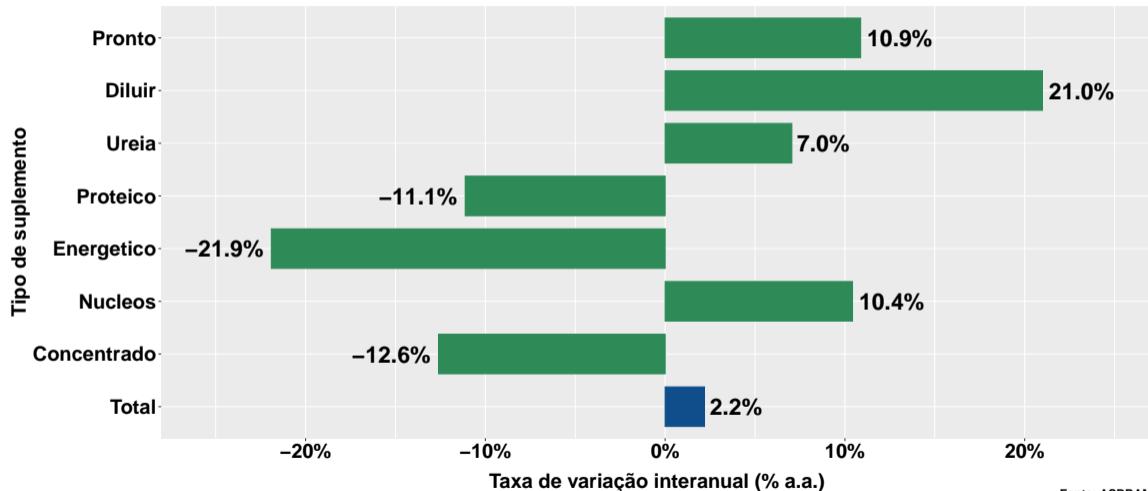
Fonte: ASBRAM

## Volume de vendas no mês por dia útil



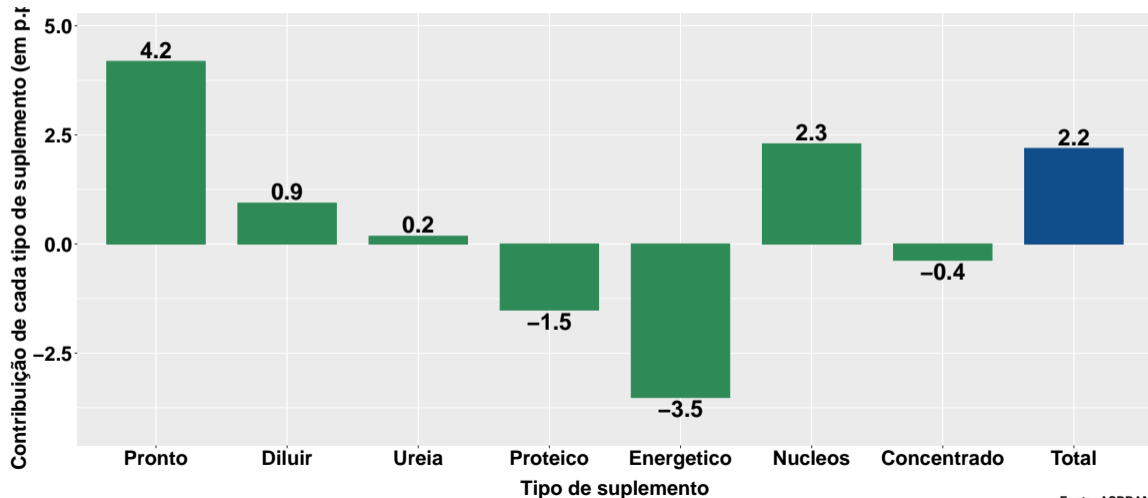
Fonte: ASBRAM

## Variação interanual do volume de vendas por dia útil

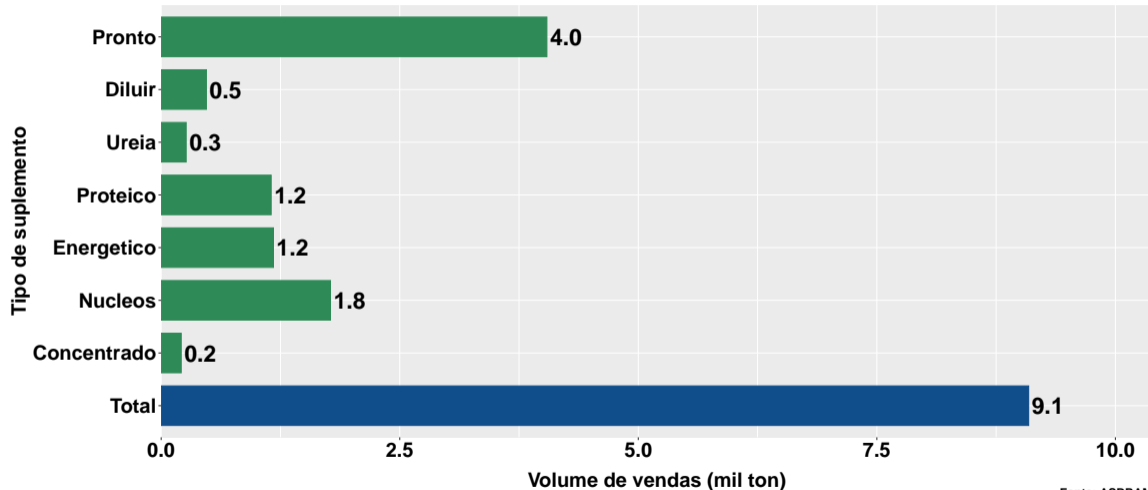


Fonte: ASBRAM

## Contribuição de cada suplemento para variação interanual do volume de vendas por dia útil

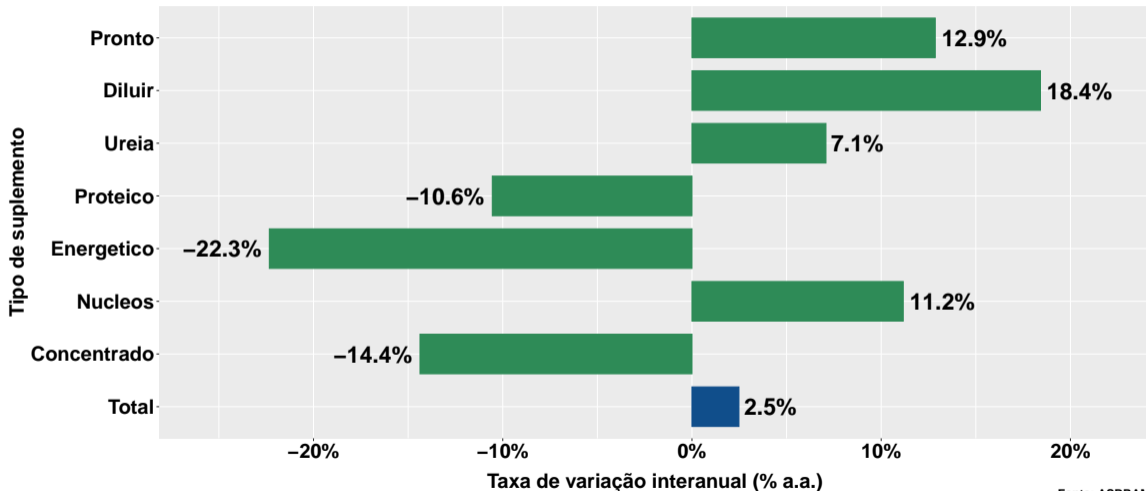


# Volume de vendas dia útil - corte



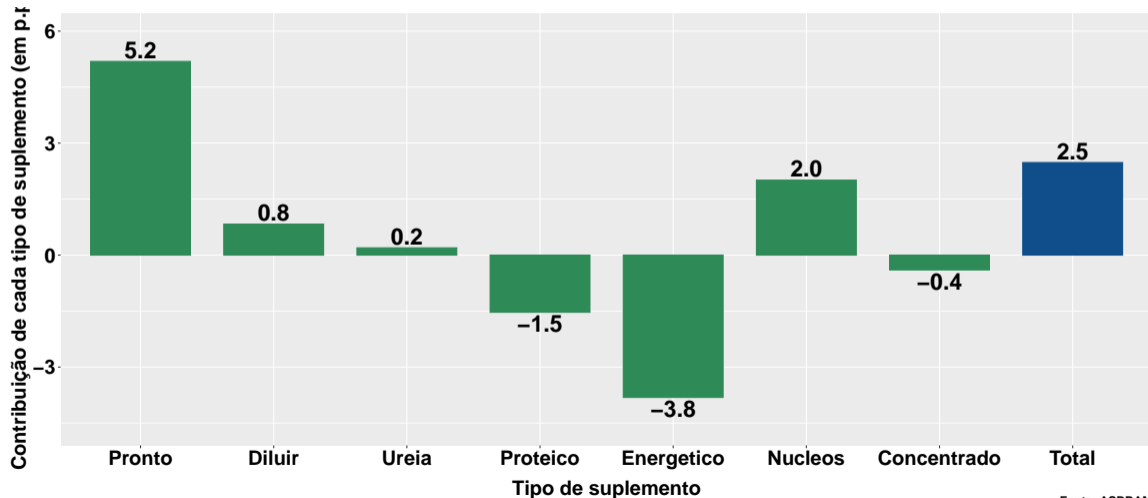
Fonte: ASBRAM

## Var. interanual do volume de vendas por dia útil - corte

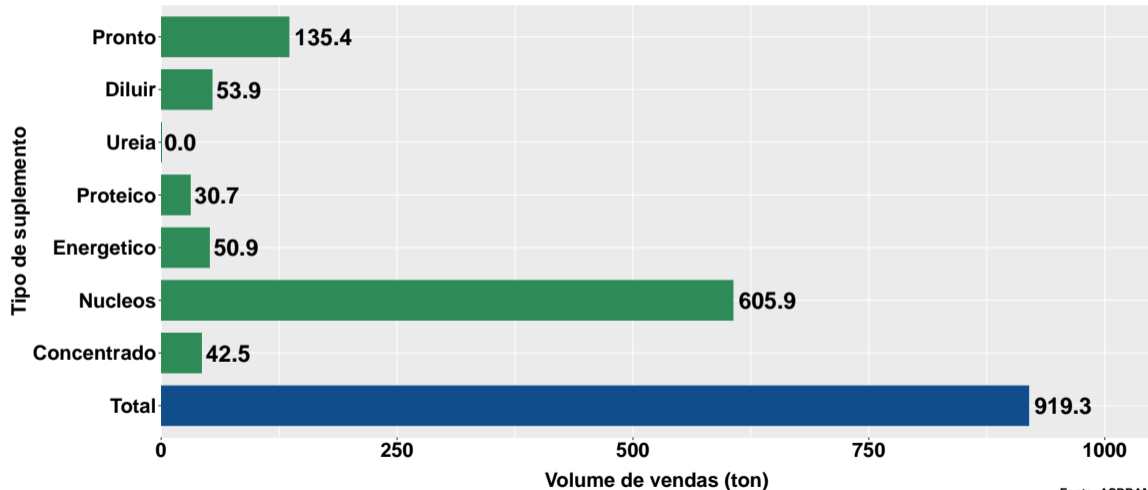


Fonte: ASBRAM

## Contr. suplemento para variação interanual do volume de vendas por dia útil - corte

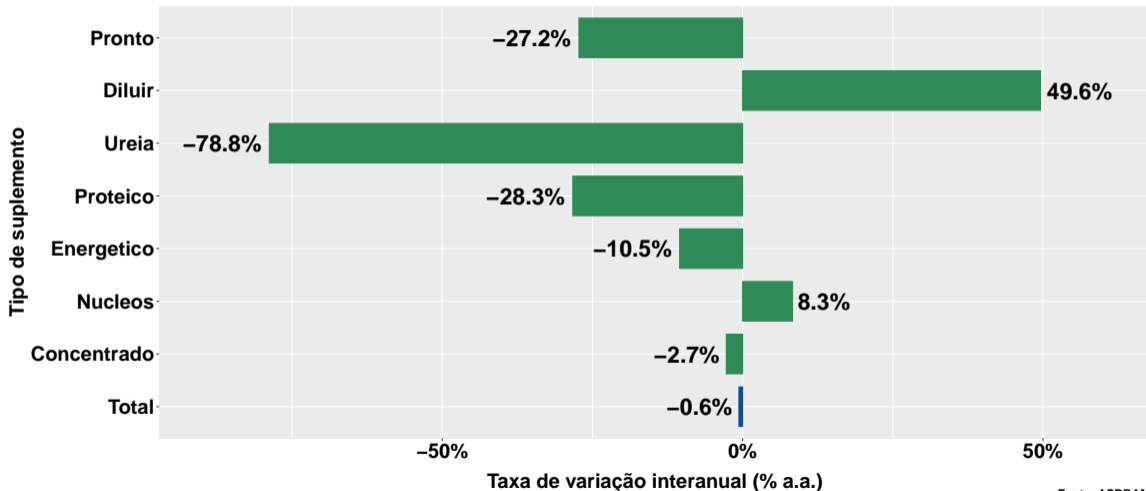


## Volume de vendas dia útil - leite



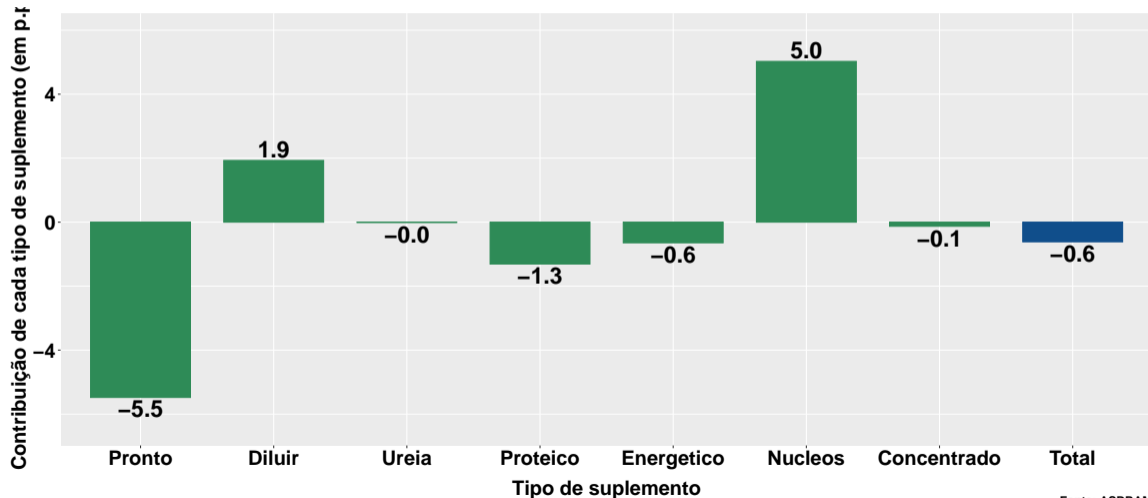
Fonte: ASBRAM

## Var. interanual do volume de vendas por dia útil - leite

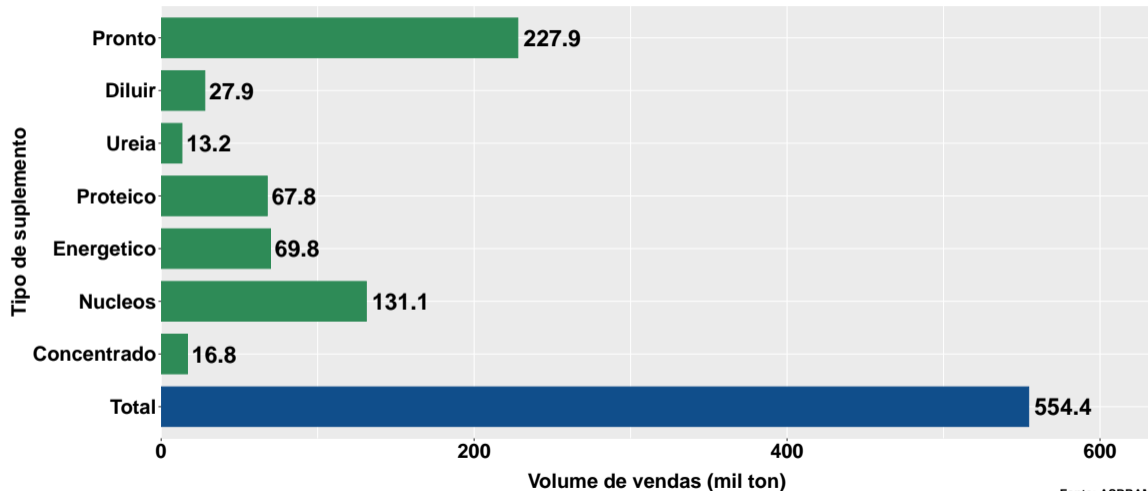


Fonte: ASBRAM

## Contr. suplemento para variação interanual do volume de vendas por dia útil - leite

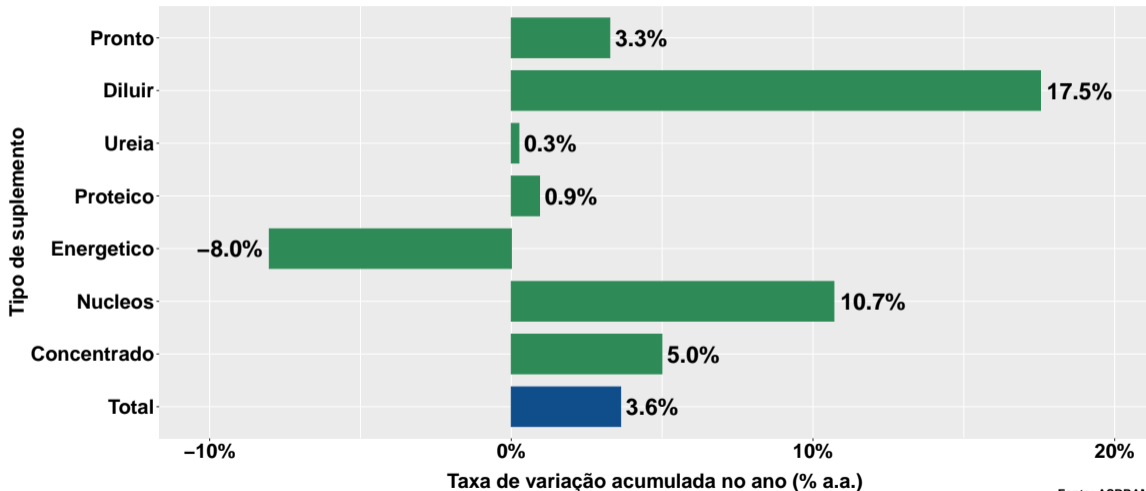


# Volume de vendas acumulado no ano



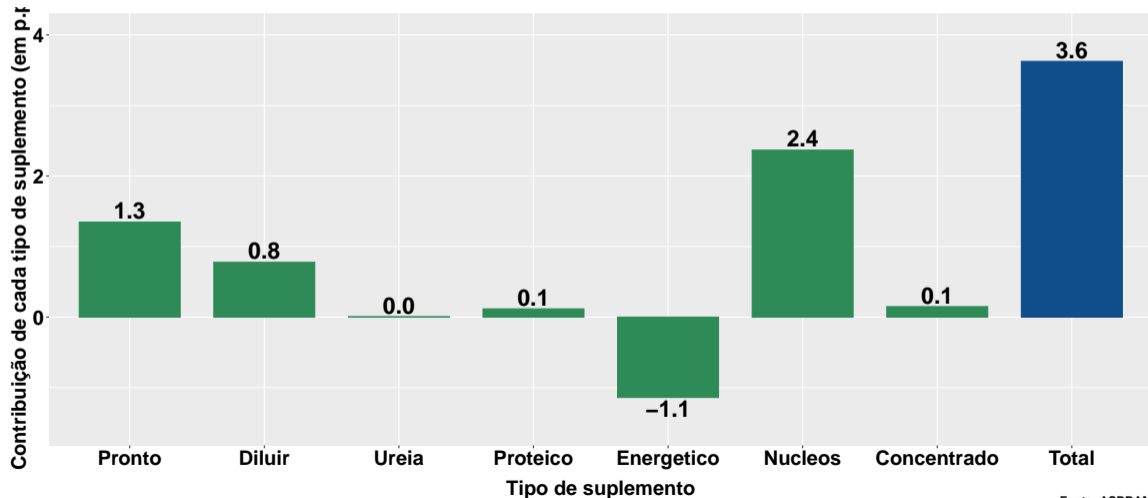
Fonte: ASBRAM

## Variação do volume de vendas acumulado no ano

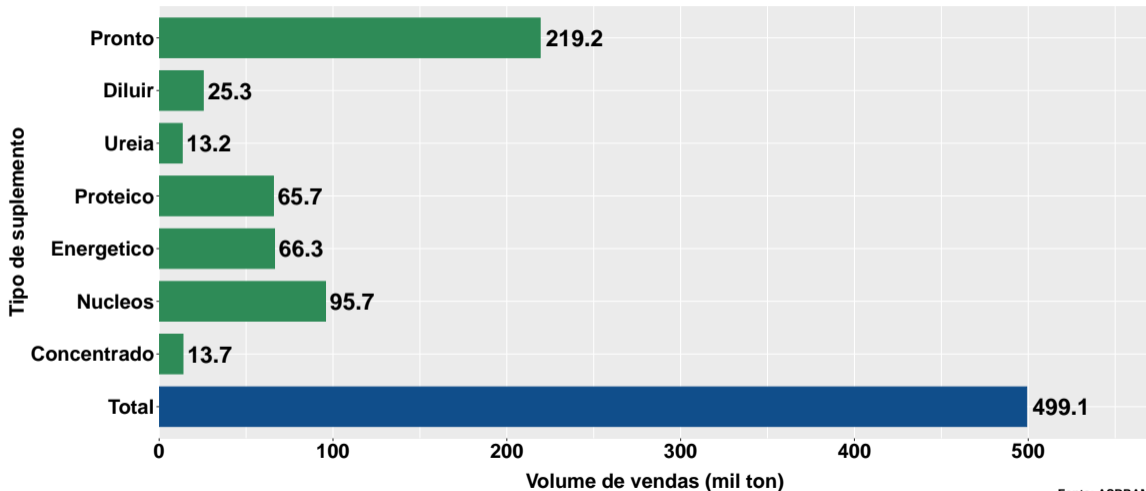


Fonte: ASBRAM

## Contribuição de cada suplemento para variação do volume de vendas acumulado no ano

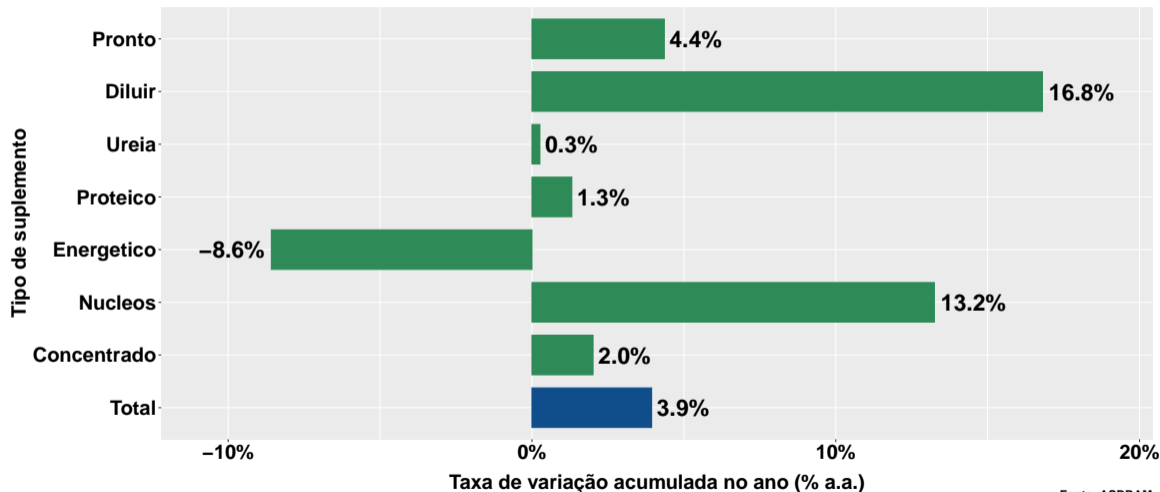


## Volume acumulado no ano - corte



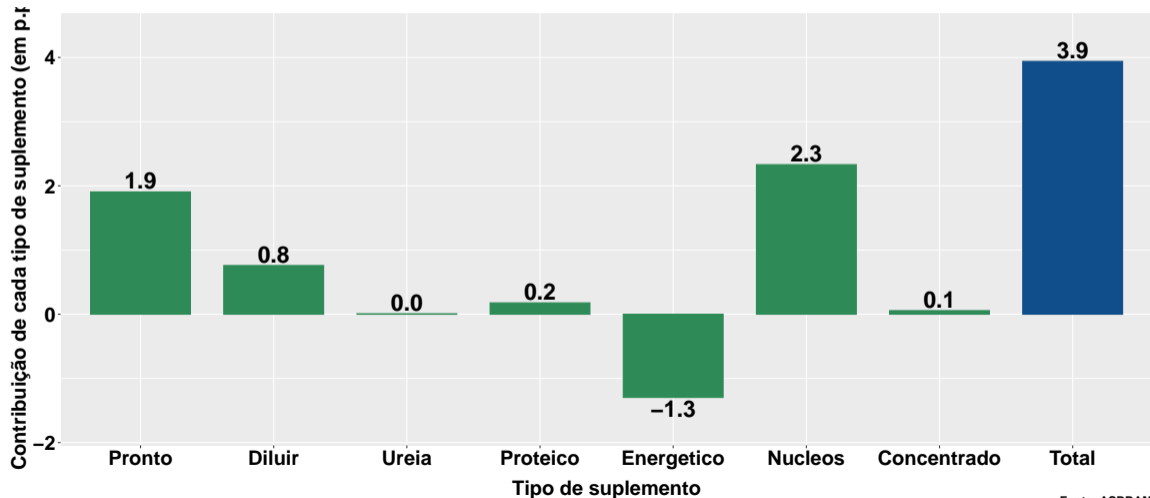
Fonte: ASBRAM

## Var. volume de vendas acumulado no ano - corte

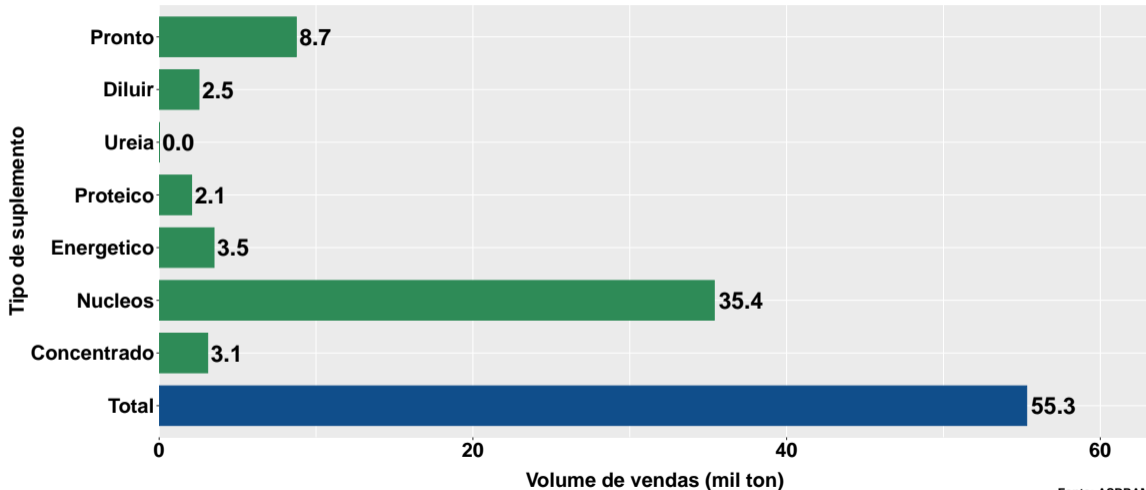


Fonte: ASBRAM

## Contr. suplemento para variação do volume de vendas acumulado no ano - corte

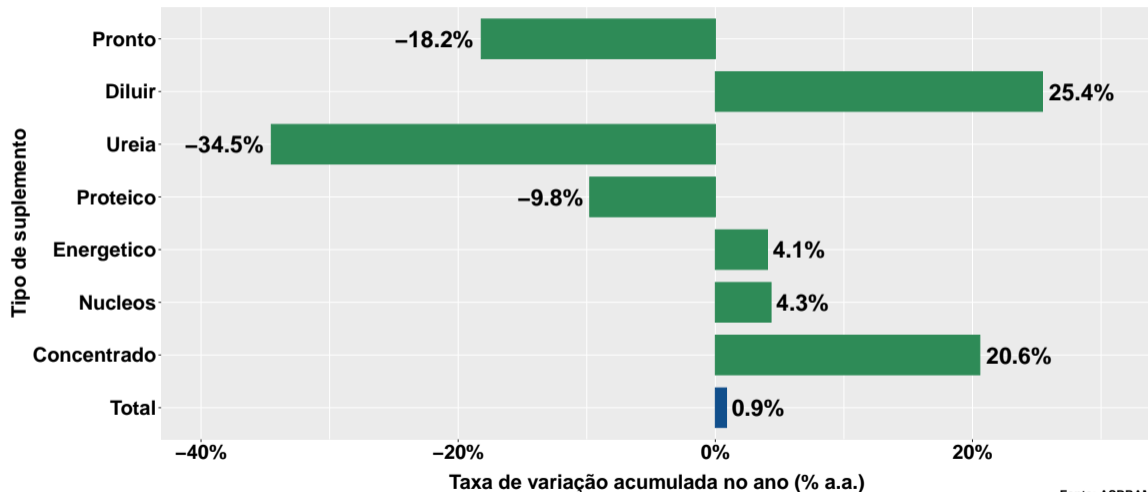


## Volume acumulado no ano - leite



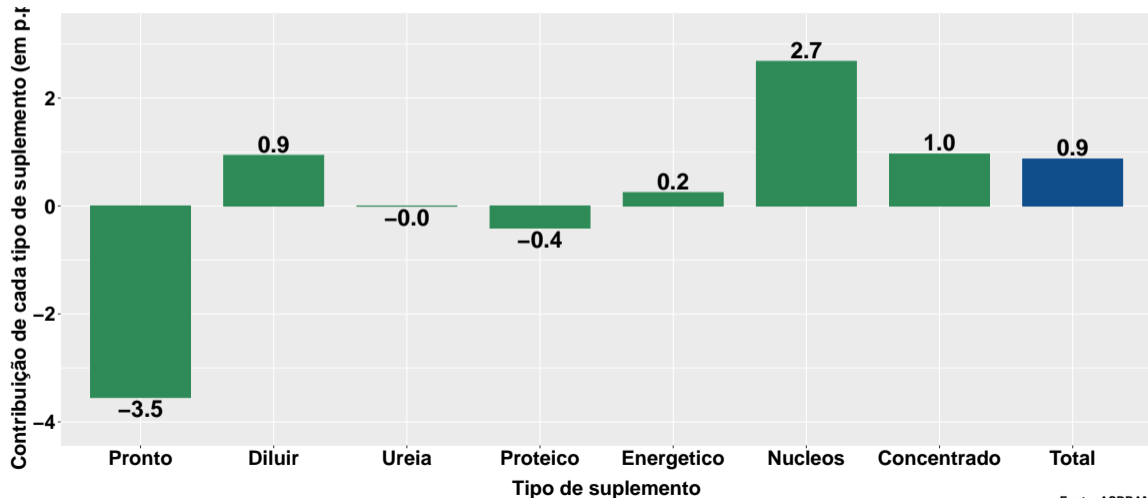
Fonte: ASBRAM

## Var. volume de vendas acumulado no ano - leite

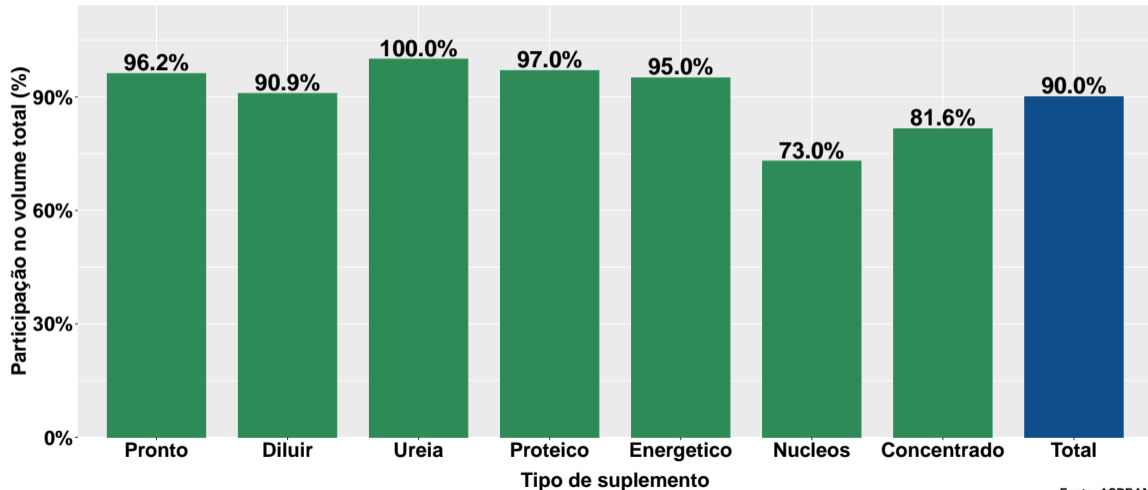


Fonte: ASBRAM

## Contr. suplemento para variação do volume de vendas acumulado no ano - leite

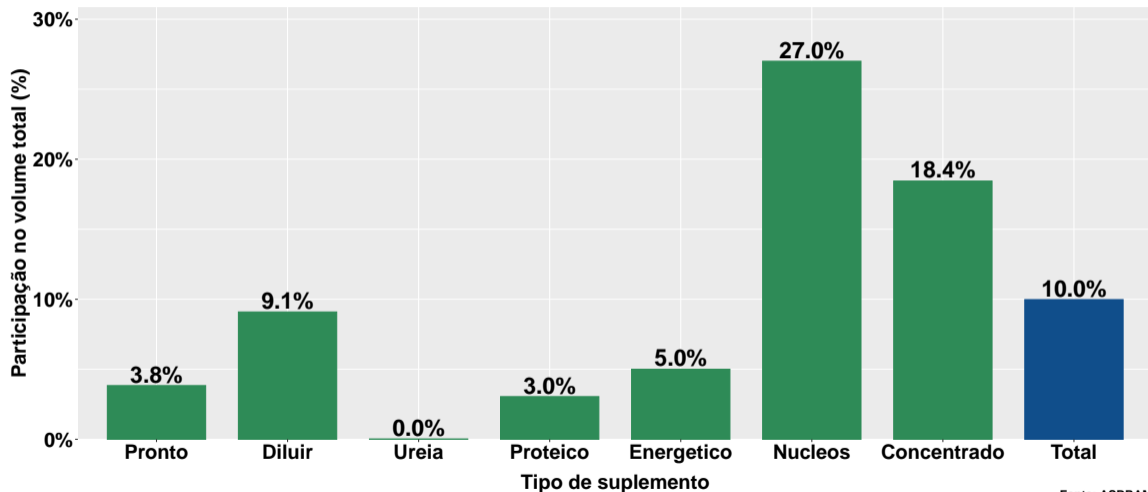


## Part. pecuária corte no volume total - no ano



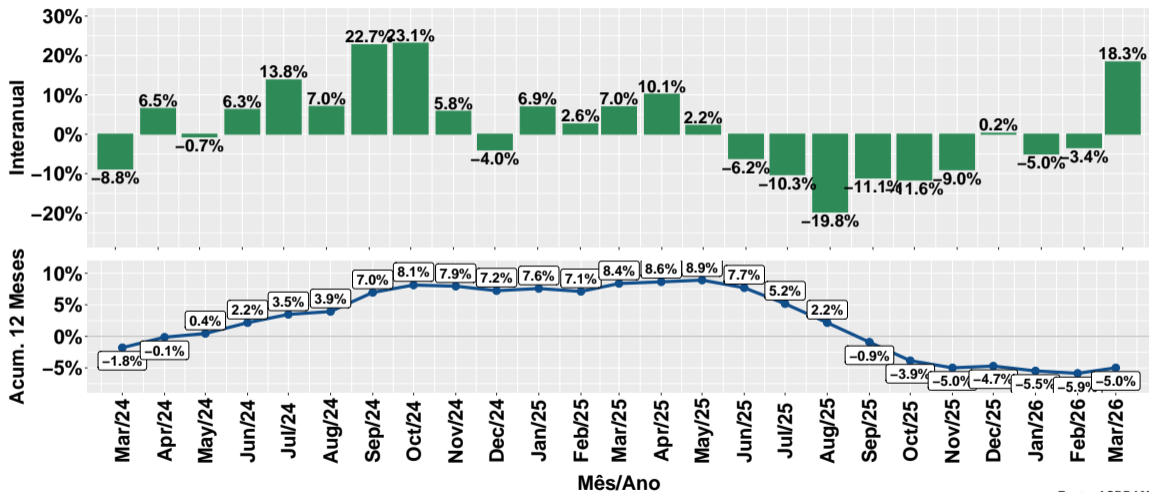
Fonte: ASBRAM

## Part. pecuária leite no volume total - no ano



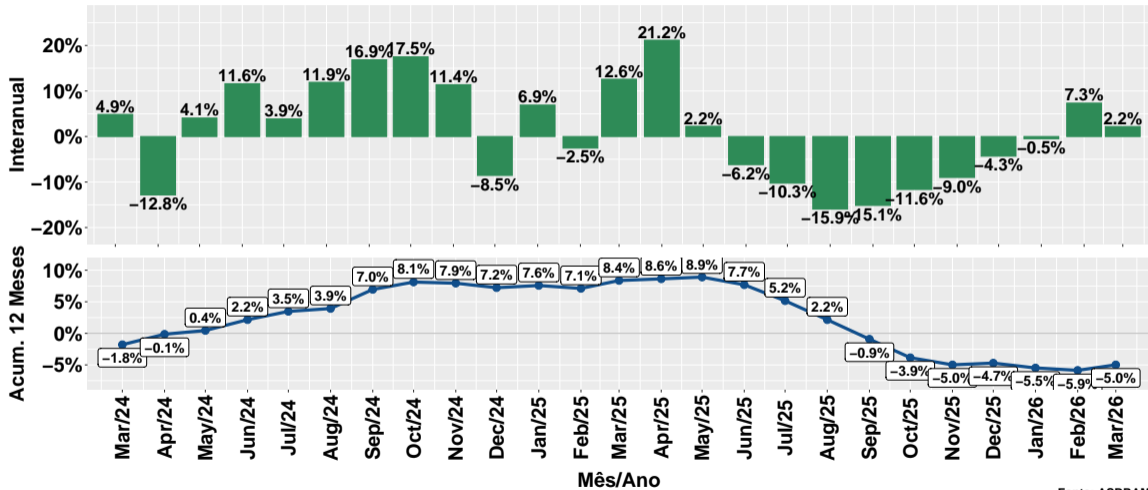
Fonte: ASBRAM

# Evolução do volume total de vendas



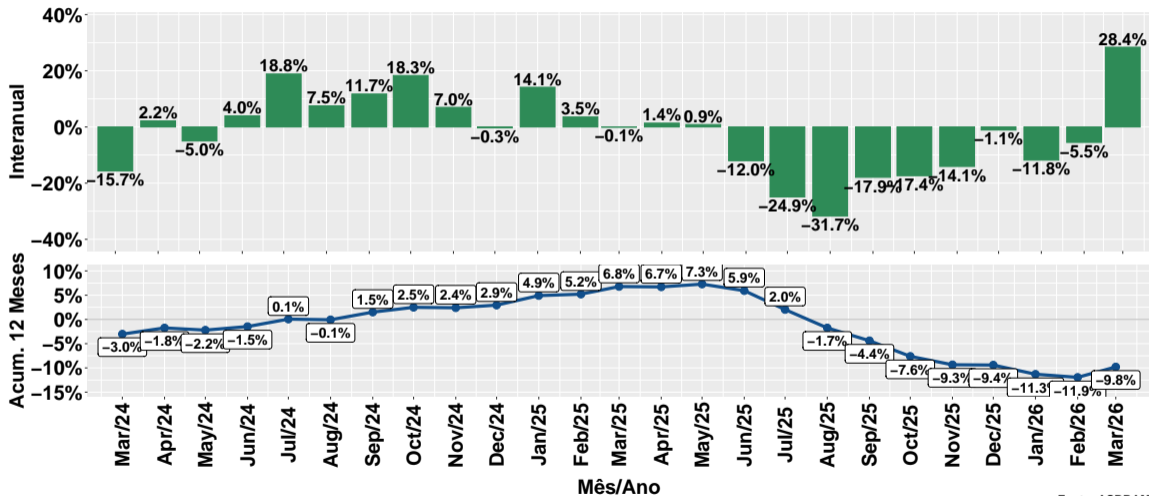
Fonte: ASBRAM

# Evolução do volume total de vendas por dia útil



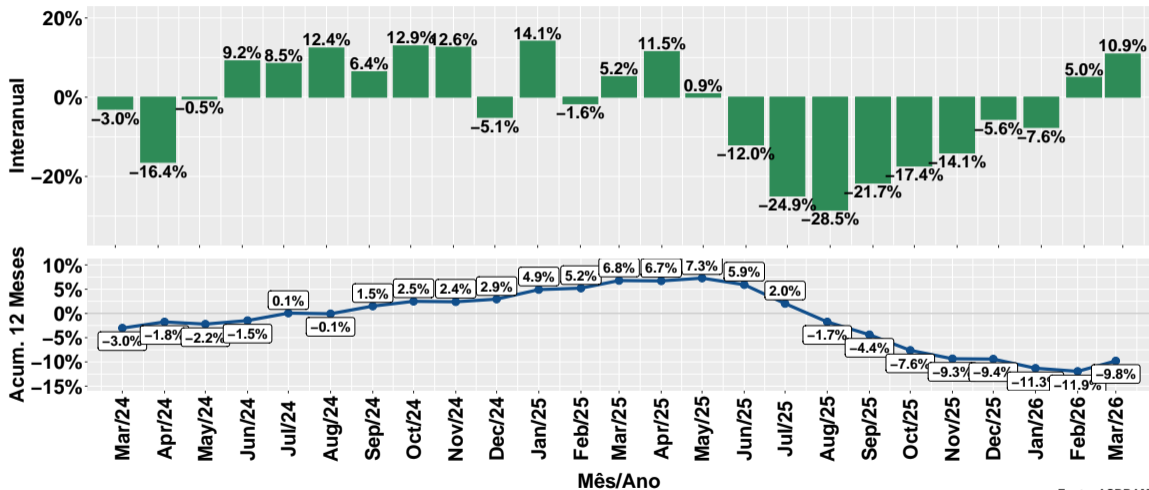
Fonte: ASBRAM

# Evolução do volume de vendas: Pronto para uso



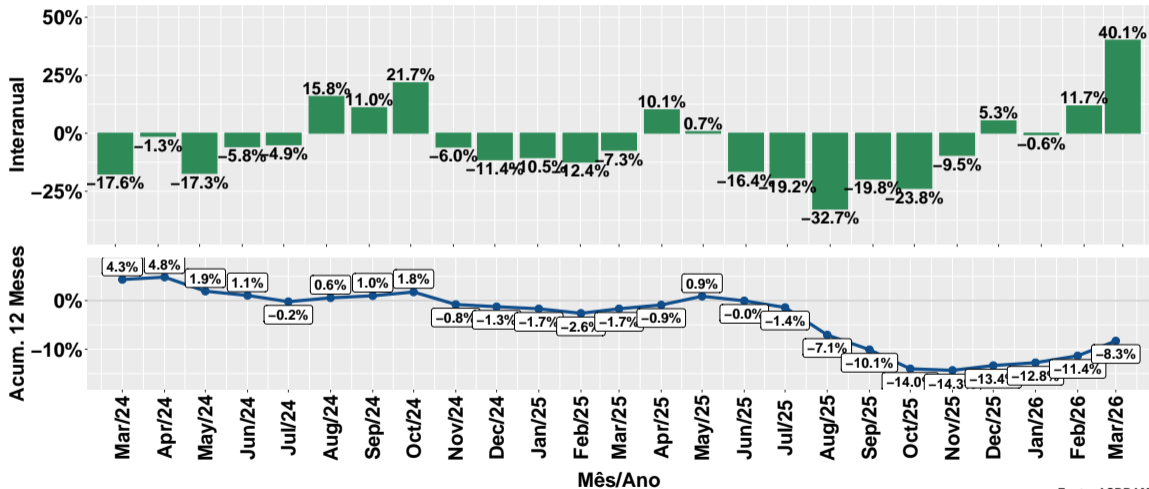
Fonte: ASBRAM

# Evolução do volume de vendas por dia útil: Pronto para uso



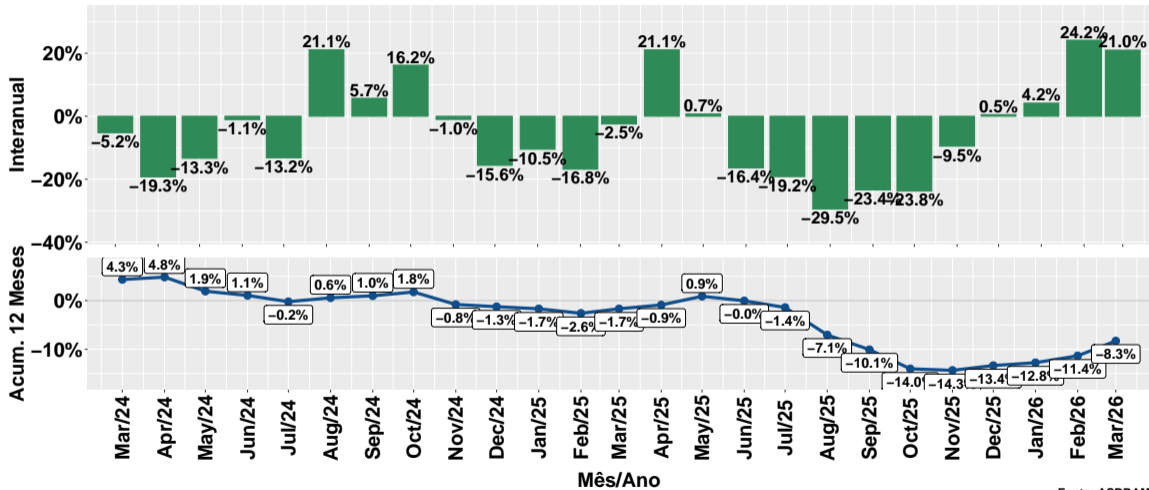
Fonte: ASBRAM

# Evolução do volume de vendas: Para diluir



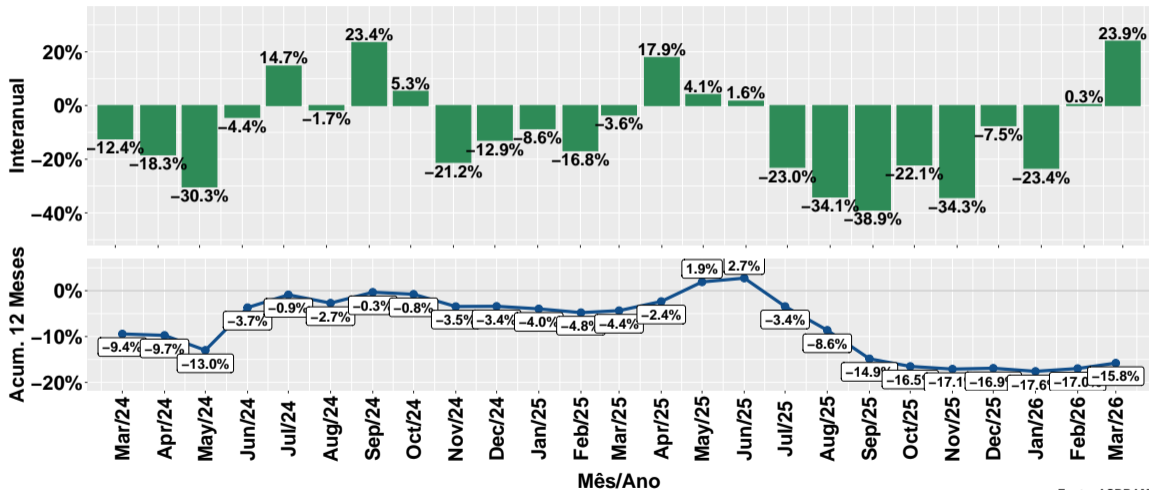
Fonte: ASBRAM

# Evolução do volume de vendas por dia útil: Para diluir



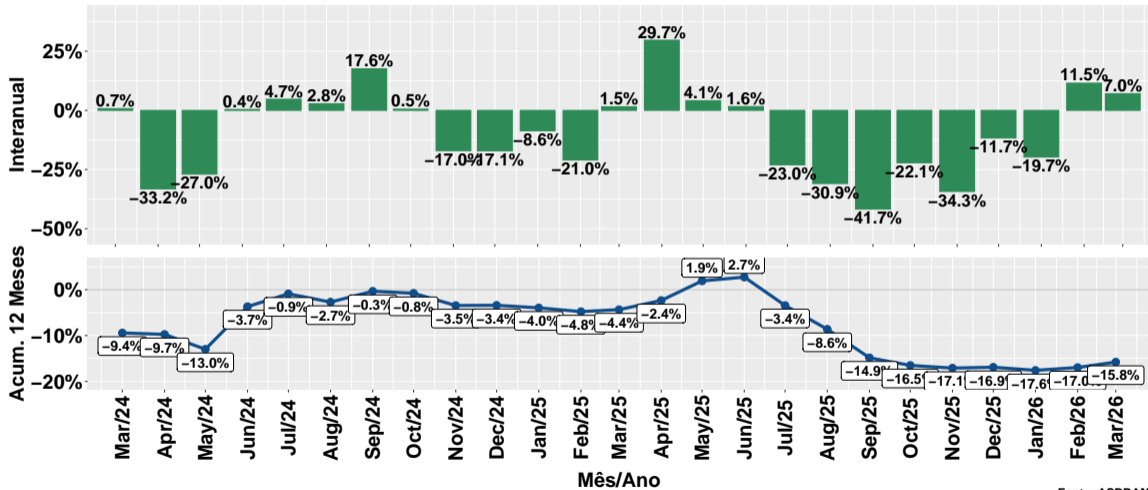
Fonte: ASBRAM

# Evolução do volume de vendas: Ureia



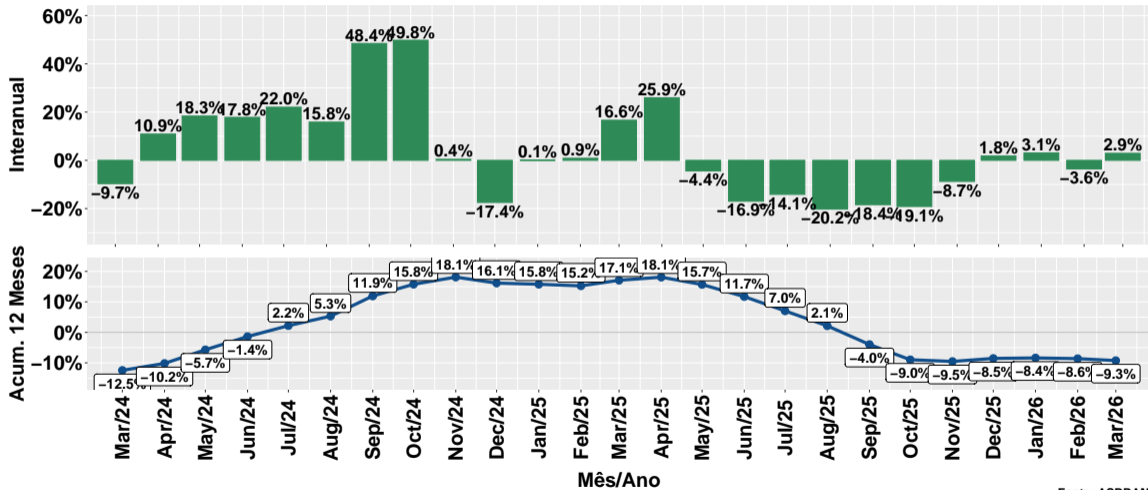
Fonte: ASBRAM

# Evolução do volume de vendas por dia útil: Ureia



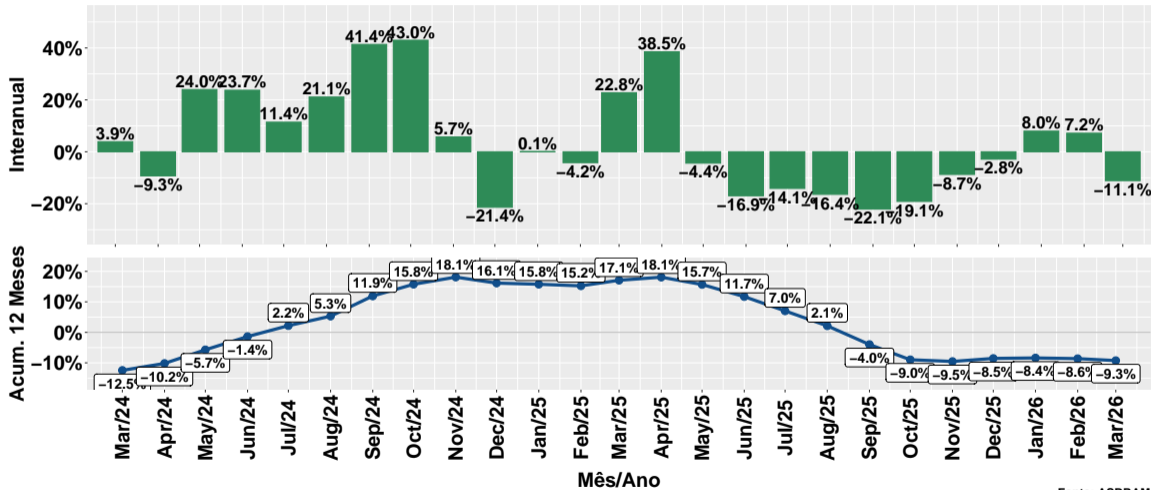
Fonte: ASBRAM

# Evolução do volume de vendas: Proteico



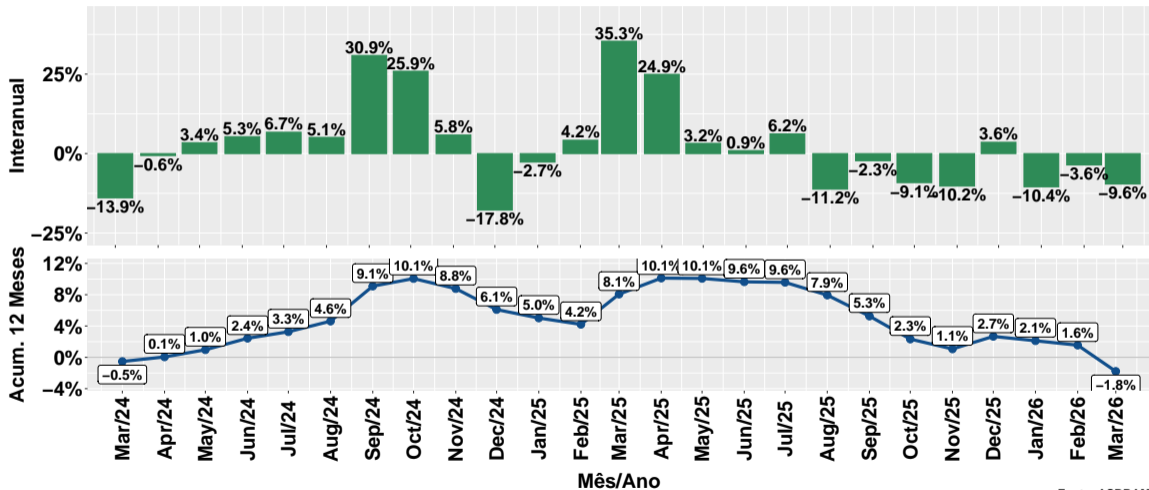
Fonte: ASBRAM

# Evolução do volume de vendas por dia útil: Proteico



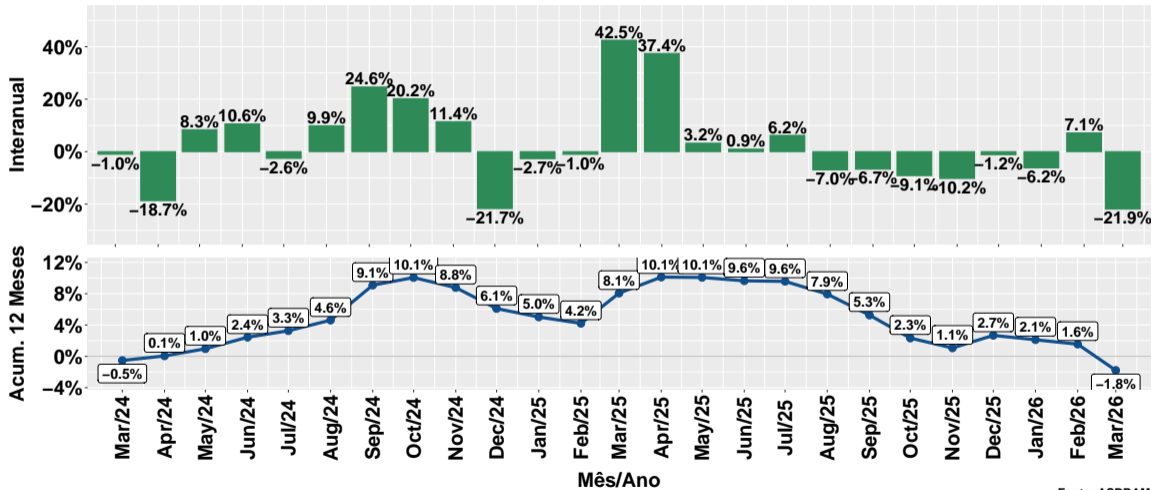
Fonte: ASBRAM

# Evolução do volume de vendas: Prot. energético



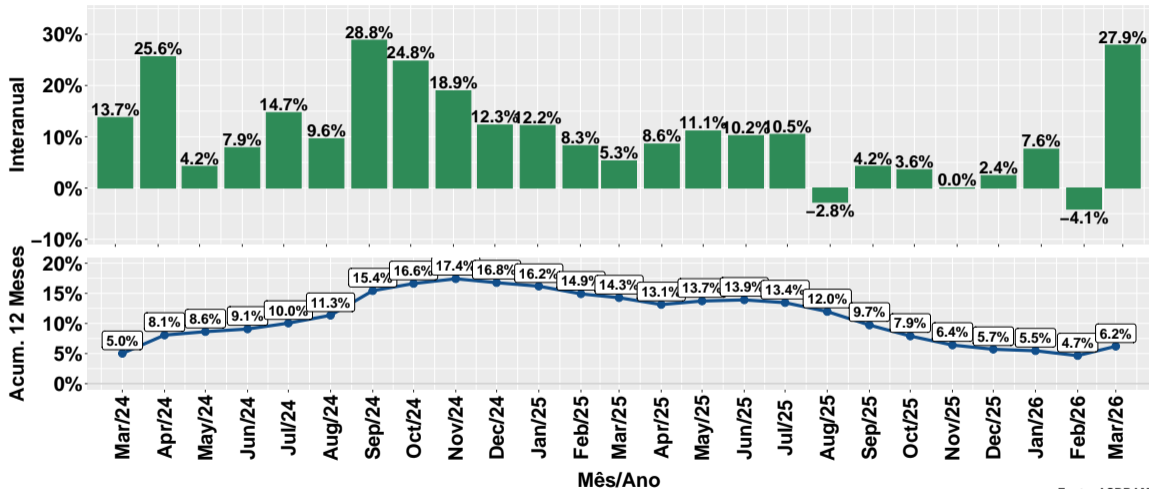
Fonte: ASBRAM

# Evolução do volume de vendas por dia útil: Prot. energético



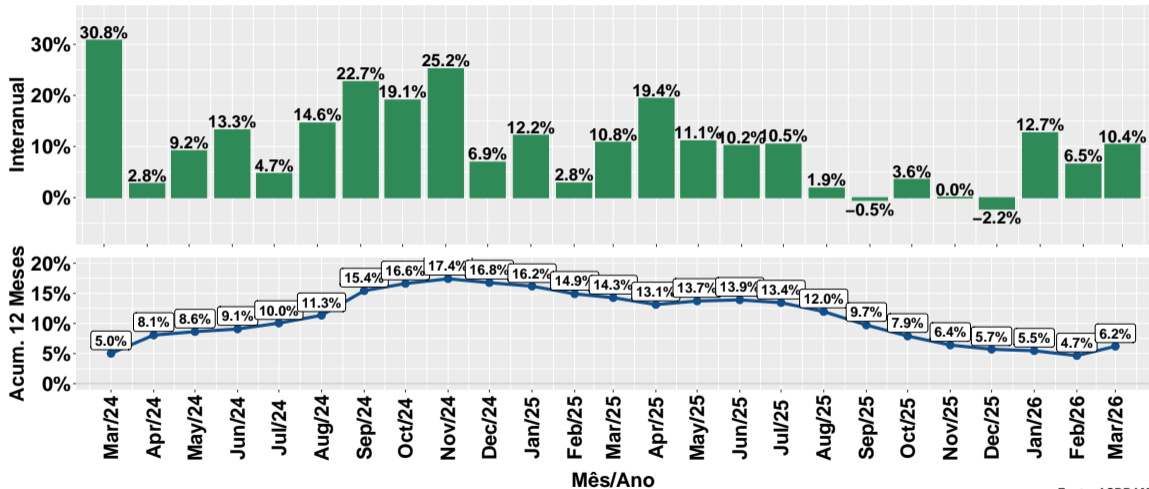
Fonte: ASBRAM

# Evolução do volume de vendas: Núcleos



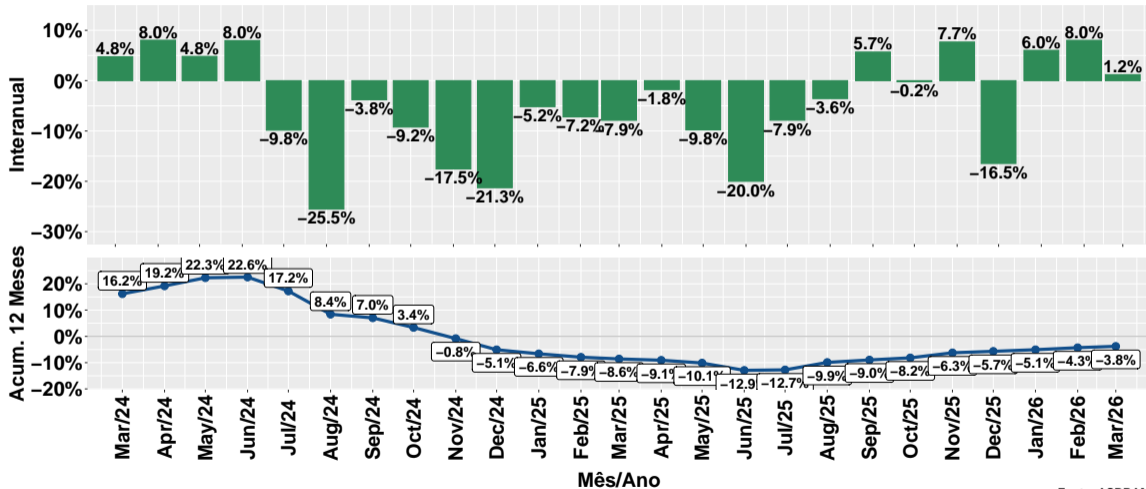
Fonte: ASBRAM

# Evolução do volume de vendas por dia útil: Núcleos



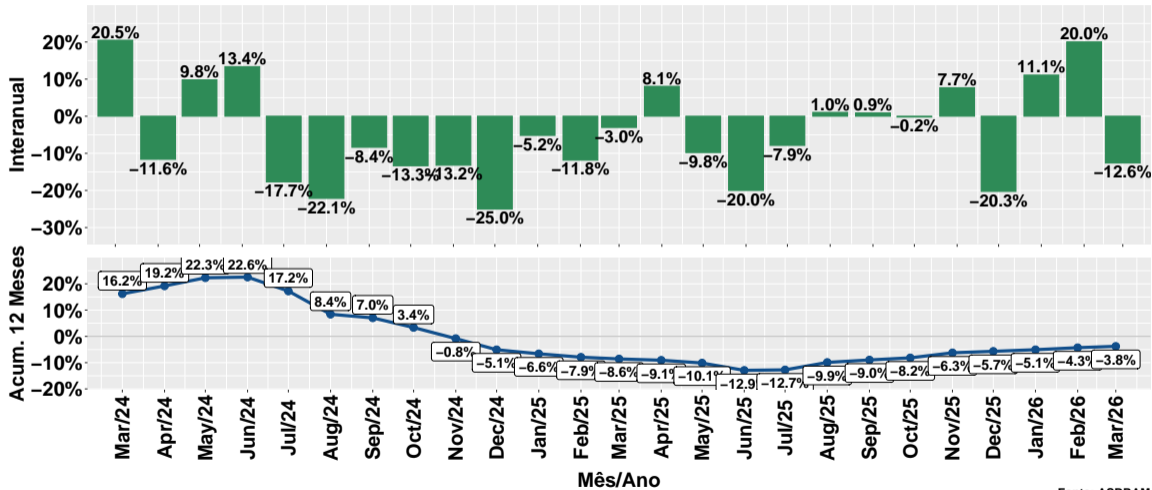
Fonte: ASBRAM

# Evolução do volume de vendas: Concentrado



Fonte: ASBRAM

# Evolução do volume de vendas por dia útil: Concentrado



Fonte: ASBRAM

## Síntese de March/2026 (Parte 01)

	Vol. vendas <sup>1</sup>	Variação (%)			
		Mensal <sup>2</sup>	Interanual <sup>3</sup>	Acum. ano	12 meses
Pronto	91.9	15.8%	28.4%	3.3%	-9.8%
Diluir	11.6	13.1%	40.1%	17.5%	-8.3%
Ureia	5.8	6.8%	23.9%	0.3%	-15.8%
Proteico	26.0	5.9%	2.9%	0.9%	-9.3%
Energetico	27.0	-0.6%	-9.6%	-8.0%	-1.8%
Nucleos	52.4	20.3%	27.9%	10.7%	6.2%
Concentrado	5.6	-7.6%	1.2%	5.0%	-3.8%
<b>Total</b>	<b>220.2</b>	<b>12.0%</b>	<b>18.3%</b>	<b>3.6%</b>	<b>-5.0%</b>

Note: Fonte: ASBRAM

<sup>1</sup> Em mil toneladas <sup>2</sup> Mês/Mês anterior com ajuste sazonal <sup>3</sup> Mês/Mesmo mês ano anterior

## Síntese de March/2026 (Parte 02)

	Contribuição (em p.p.)			
	Mensal <sup>2</sup>	Interanual <sup>3</sup>	Acum. ano	12 meses
Pronto	5.6	10.9	1.3	-3.6
Diluir	0.7	1.8	0.8	-0.4
Ureia	0.3	0.6	0.0	-0.6
Proteico	0.9	0.4	0.1	-1.4
Energetico	-0.1	-1.5	-1.1	-0.2
Nucleos	4.8	6.1	2.4	1.4
Concentrado	-0.3	0.0	0.1	-0.1
<b>Total</b>	<b>12.0</b>	<b>18.3</b>	<b>3.6</b>	<b>-5.0</b>

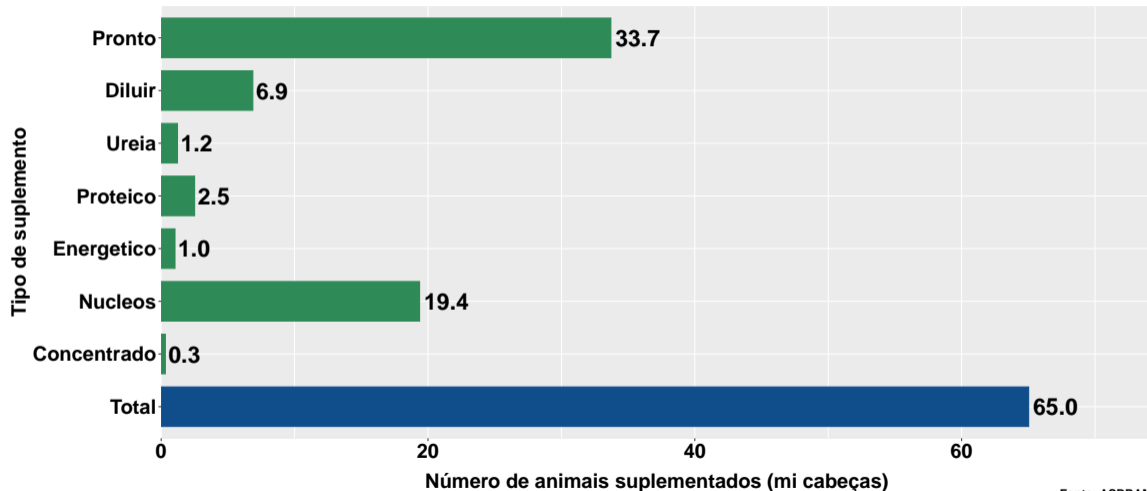
Note: Fonte: ASBRAM

<sup>1</sup> Em mil toneladas <sup>2</sup> Mês/Mês anterior com ajuste sazonal <sup>3</sup> Mês/Mesmo mês ano anterior

## Section 2

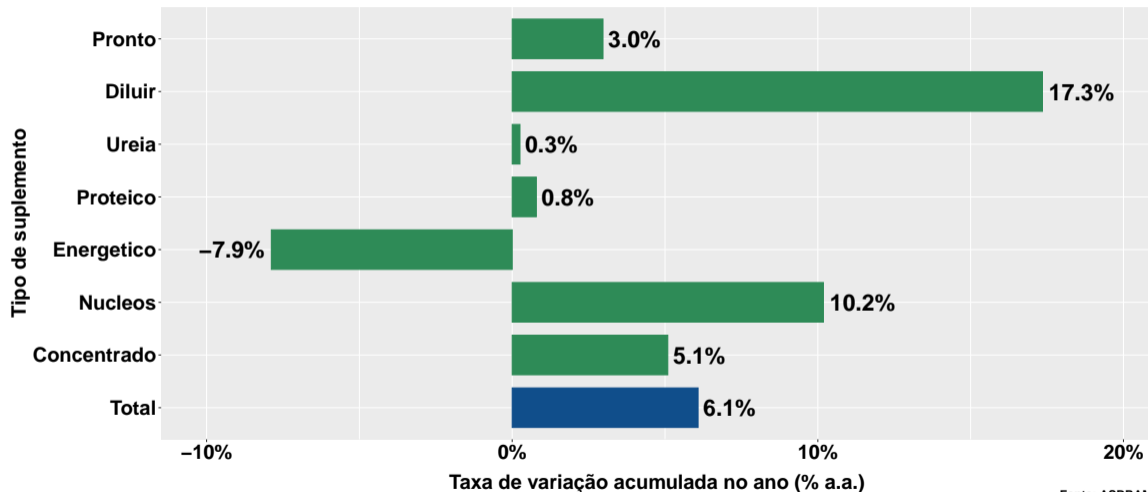
# Número de animais suplementados no Brasil

## Número médio de animais suplementados no ano



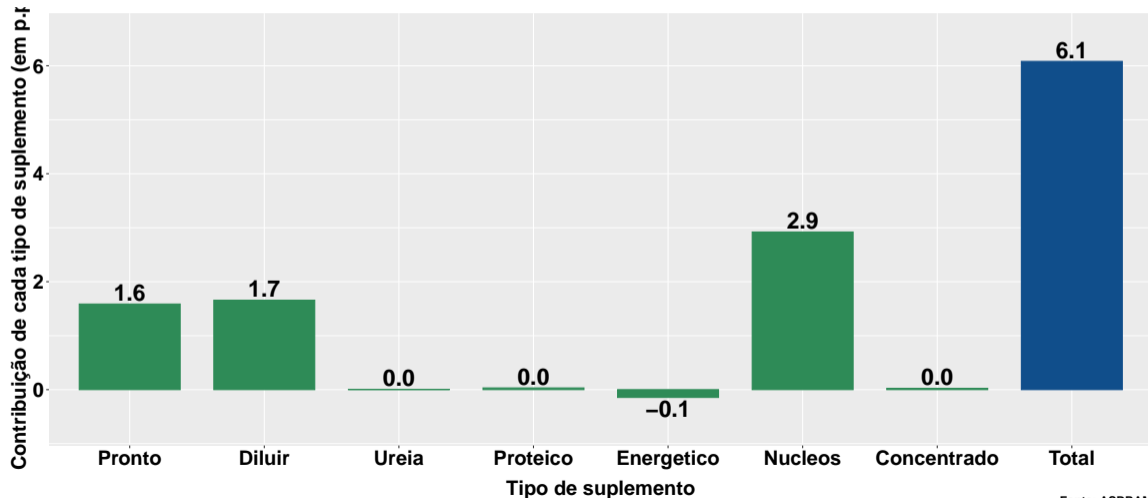
Fonte: ASBRAM

## Variação do num. de animais suplementados no ano

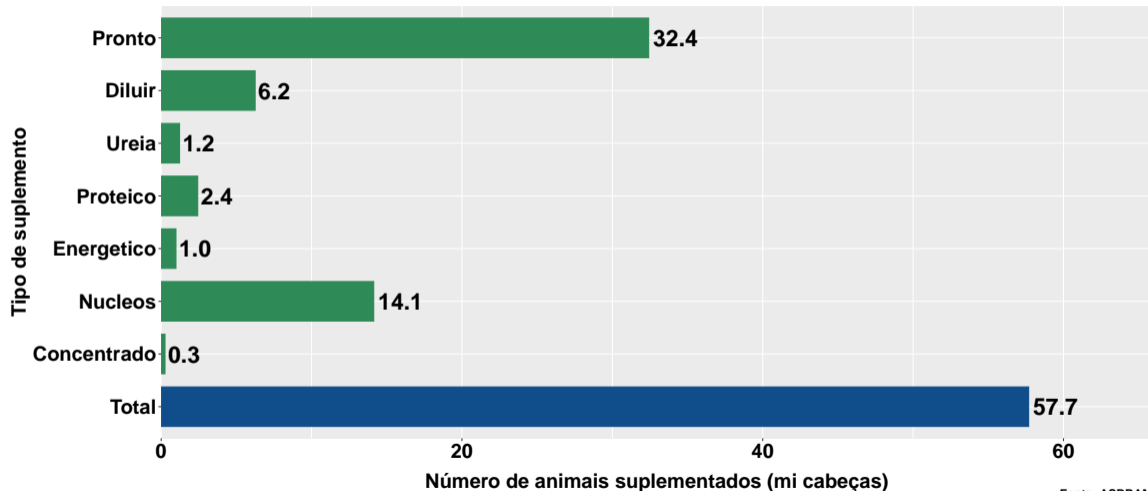


Fonte: ASBRAM

## Contribuição de cada suplemento para variação do número de animais suplementados no ano

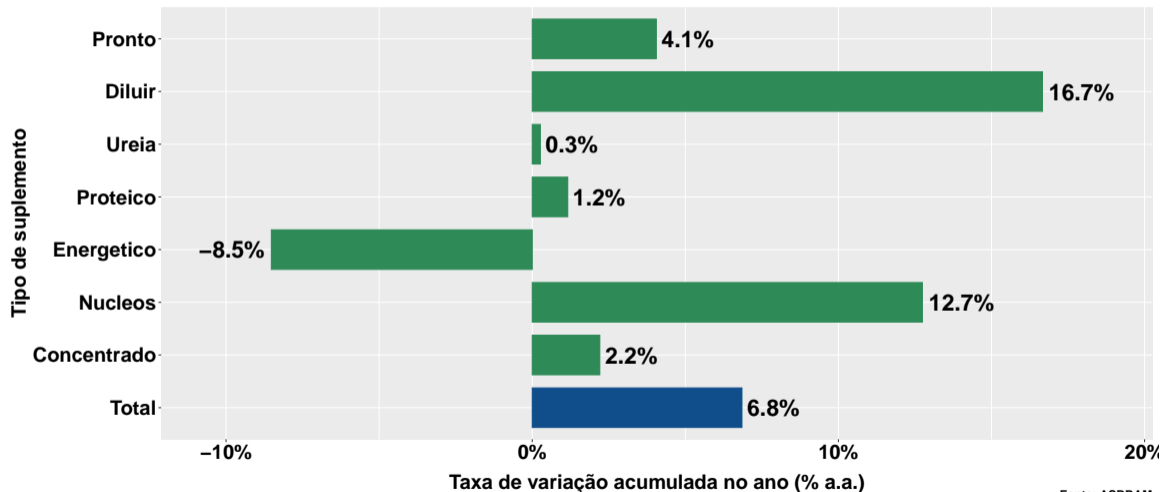


## Núm. animais suplementados ano - corte



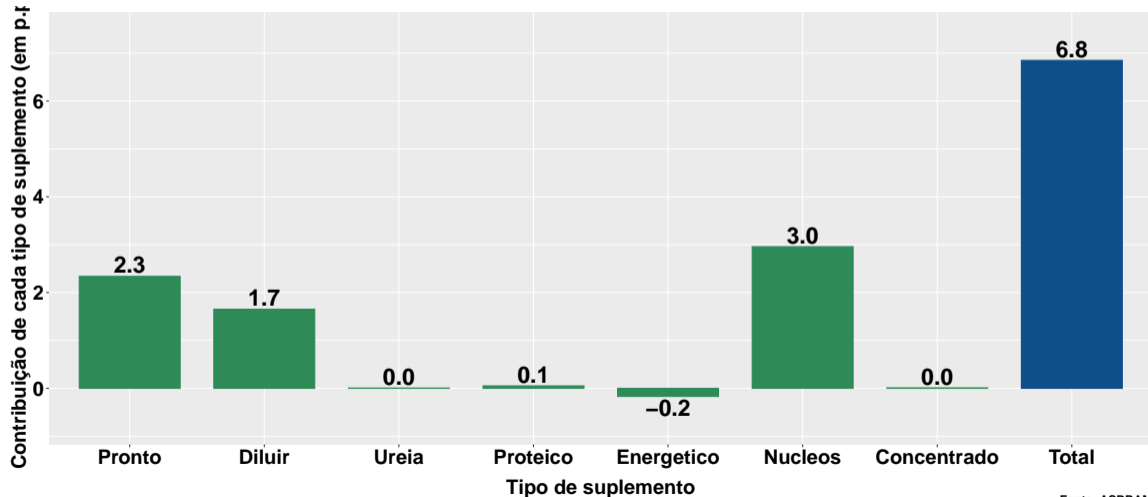
Fonte: ASBRAM

## Var. num. de animais suplementados no ano - corte

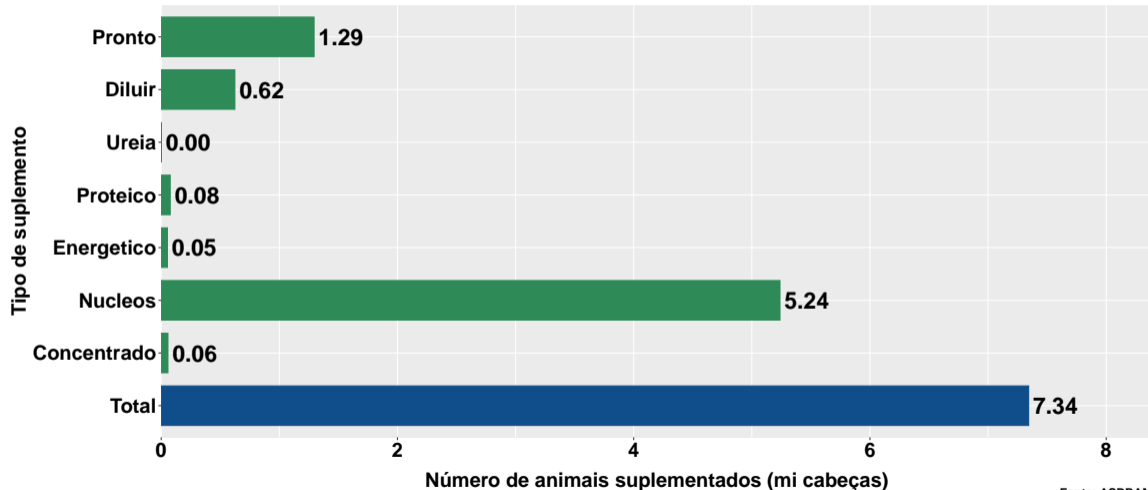


Fonte: ASBRAM

## Contr. suplemento para variação do número de animais suplementados no ano - corte

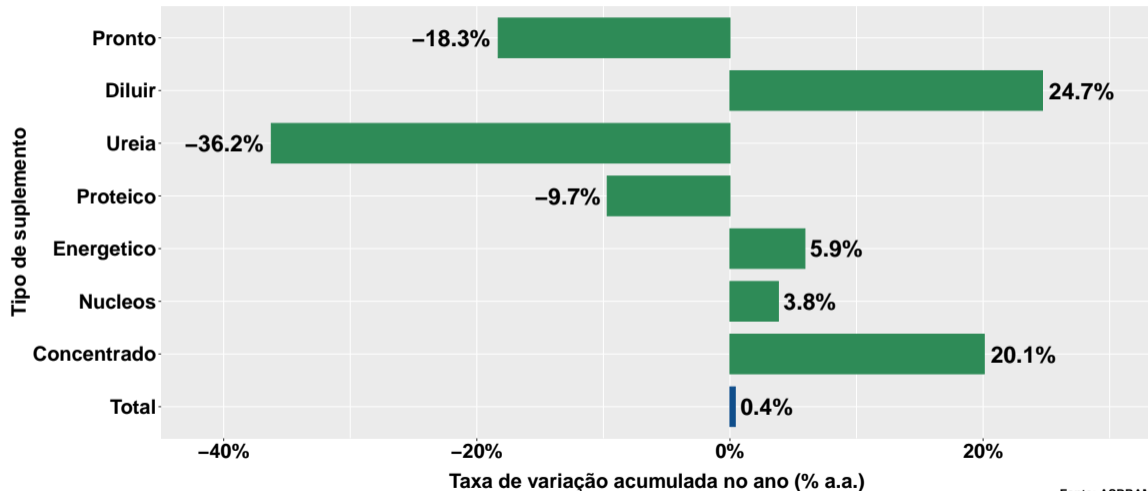


## Núm. animais suplementados ano - leite



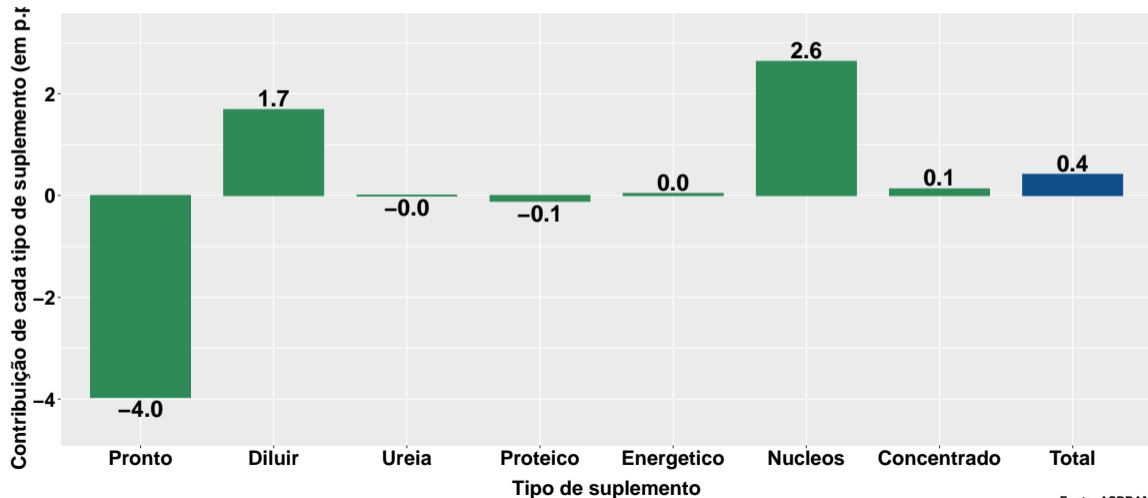
Fonte: ASBRAM

## Var. num. de animais suplementados no ano - leite



Fonte: ASBRAM

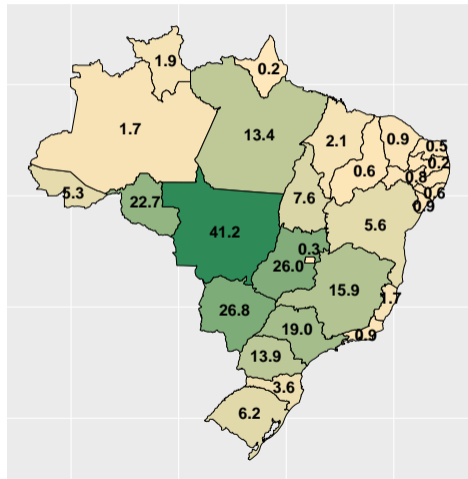
## Contr. suplemento para variação do número de animais suplementados no ano - leite



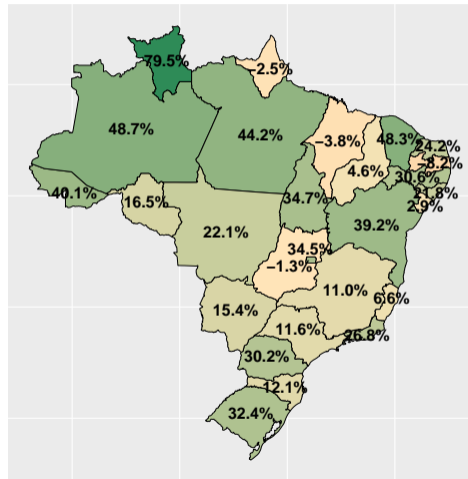
## Section 3

# Desempenho por Unidade da Federação (UF)

# Volume total (e var. interanual) de vendas de suplementos no mês



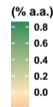
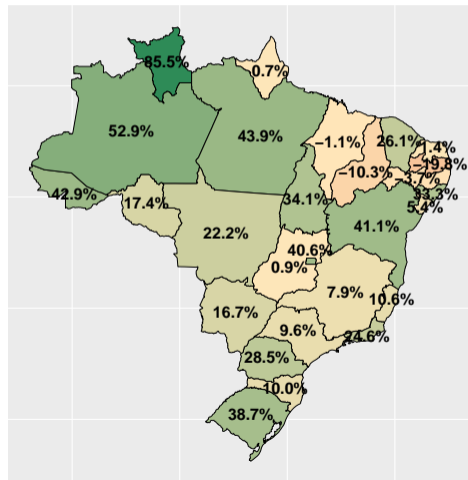
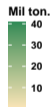
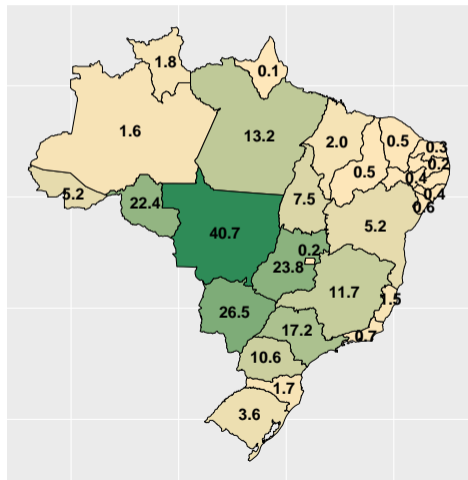
Mil ton.  
40  
30  
20  
10



(% a.a.)  
0.6  
0.4  
0.2  
0.0

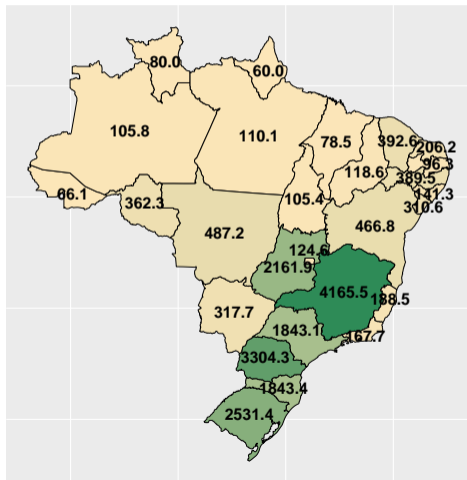
Fonte: ASBRAM

# Volume total (e var. interanual) de vendas de suplementos no mês - corte

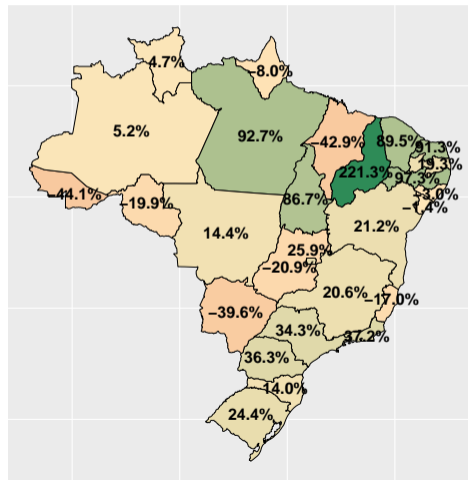


Fonte: ASBRAM

# Volume total (e var. interanual) de vendas de suplementos no mês - leite



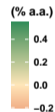
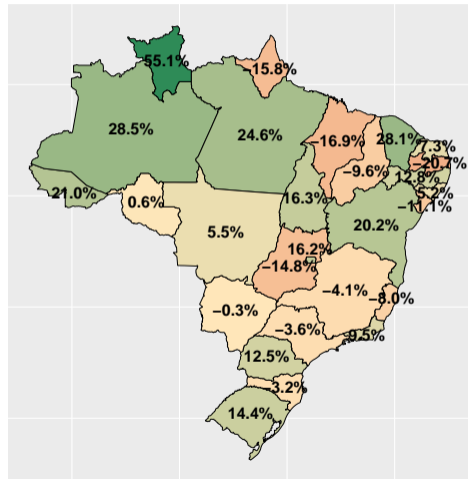
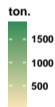
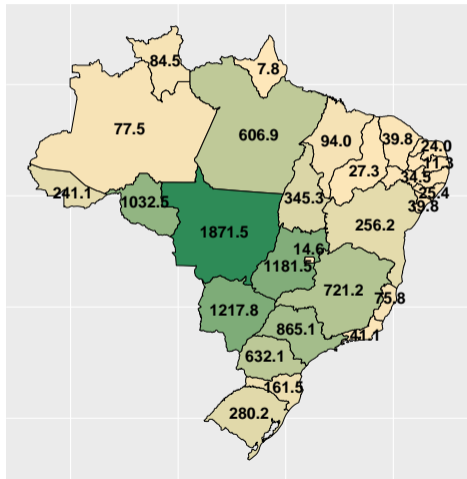
ton.  
4000  
3000  
2000  
1000



(% a.a.)  
2.0  
1.5  
1.0  
0.5  
0.0

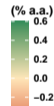
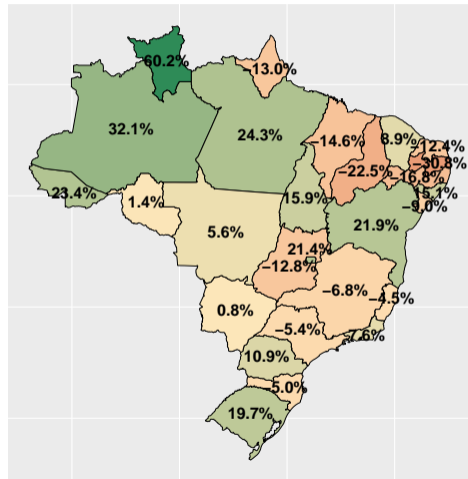
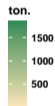
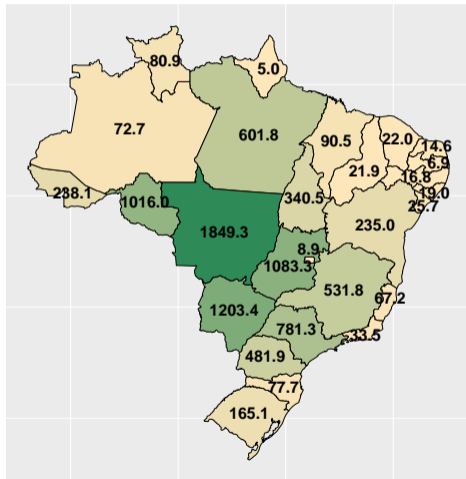
Fonte: ASBRAM

# Vol. total (e var. interanual) de vendas no mês por dia útil



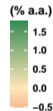
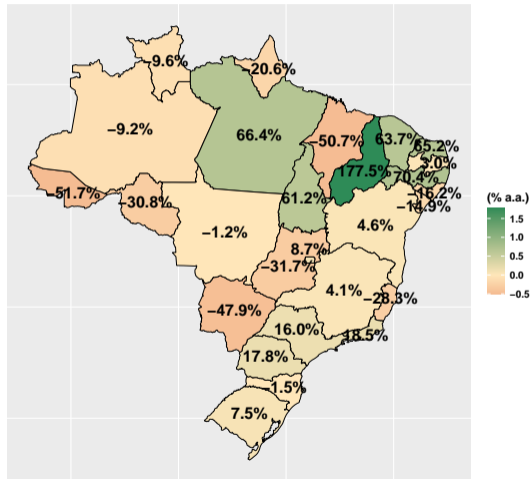
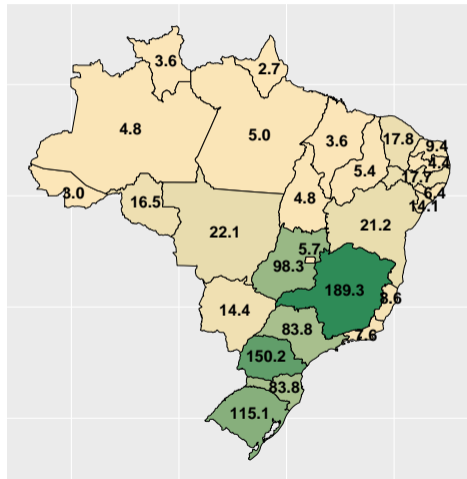
Fonte: ASBRAM

# Vol. total (e var. interanual) de vendas no mês por dia útil - corte



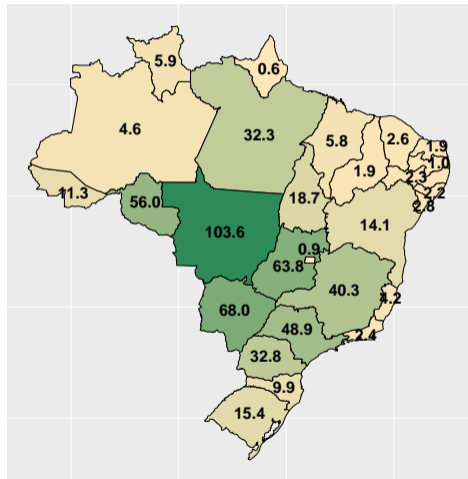
Fonte: ASBRAM

# Vol. total (e var. interanual) de vendas no mês por dia útil - leite

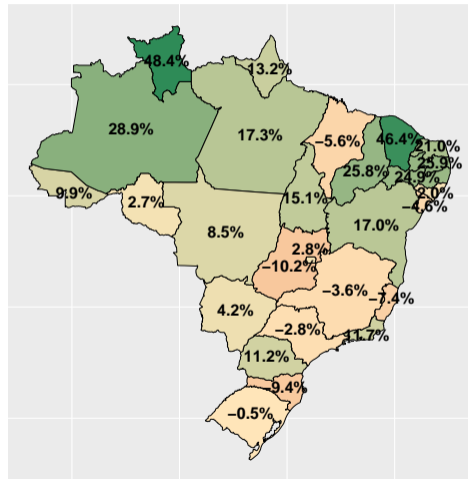


Fonte: ASBRAM

# Volume total (e var.) de vendas de suplementos no ano



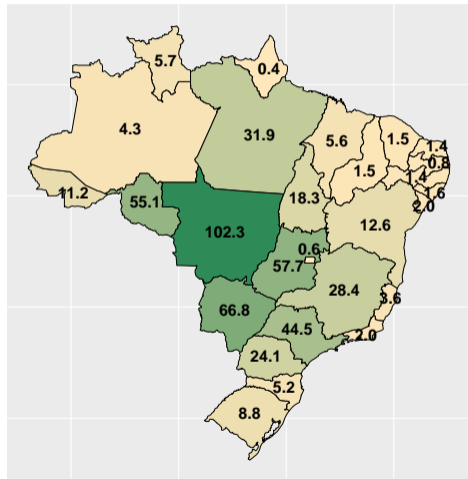
Mil ton.  
100  
75  
50  
25



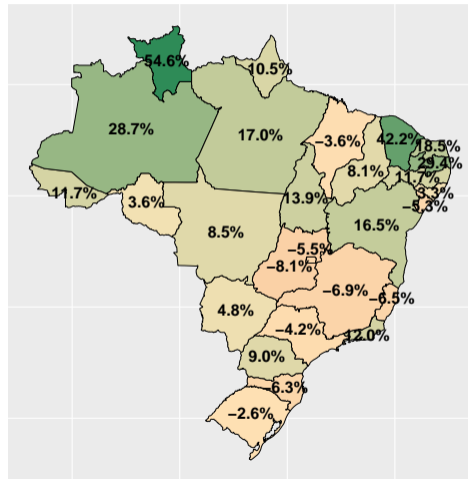
(% a.a.)  
0.4  
0.3  
0.2  
0.1  
0.0  
-0.1

Fonte: ASBRAM

# Volume total (e var.) de vendas de suplementos no ano - corte



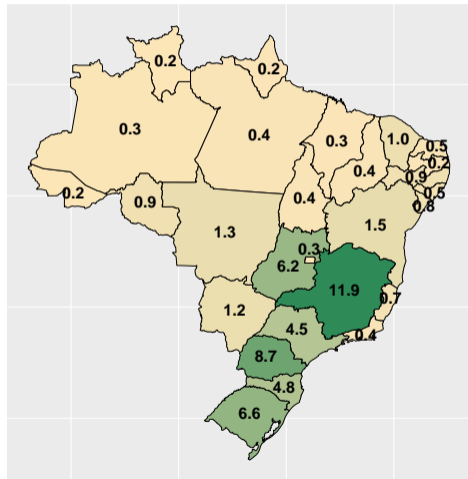
Mil ton.  
100  
75  
50  
25



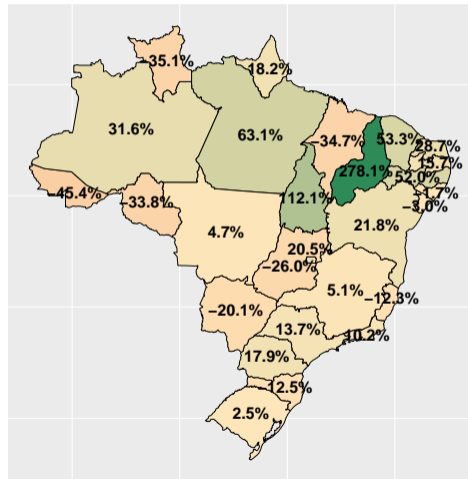
(% a.a.)  
0.5  
0.4  
0.3  
0.2  
0.1  
0.0

Fonte: ASBRAM

# Volume total (e var.) de vendas de suplementos no ano - leite



Mil ton.

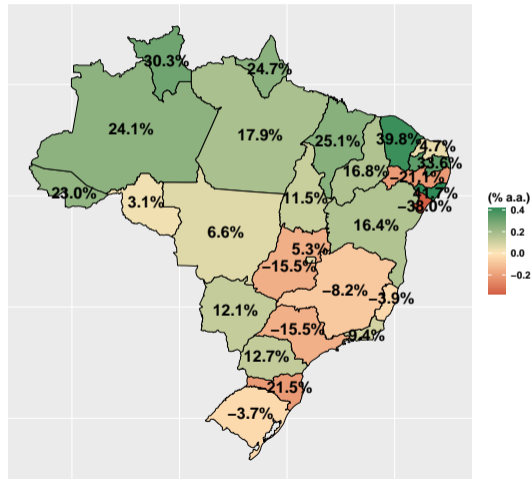
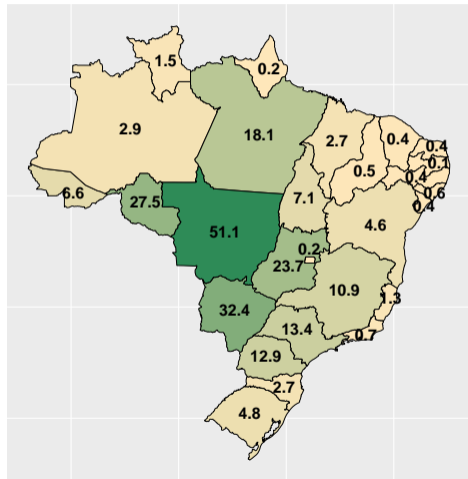


(% a.a.)



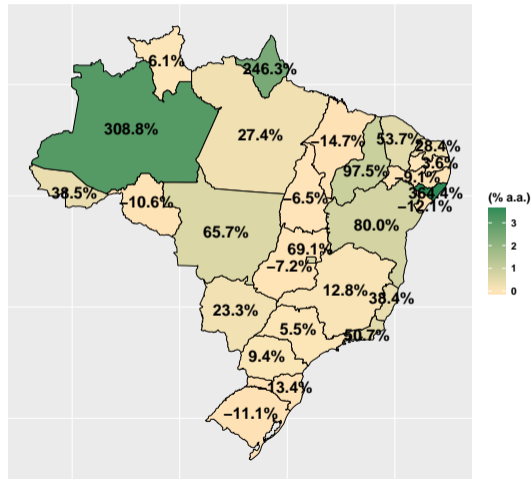
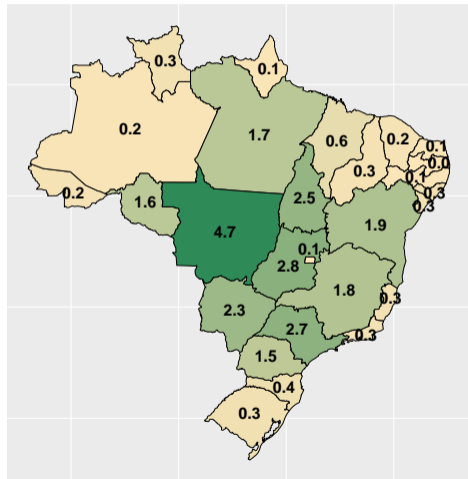
Fonte: ASBRAM

# Vol. (e var.) de vendas no ano: Pronto para uso



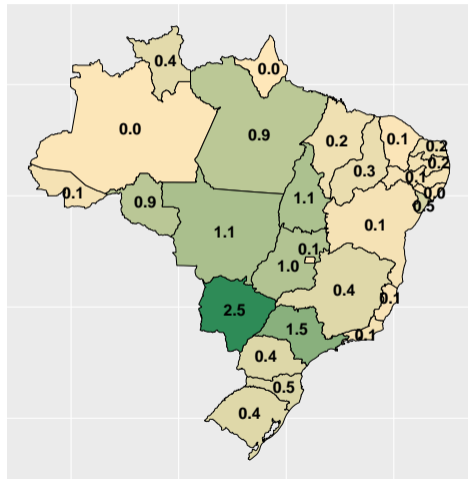
Fonte: ASBRAM

# Vol. (e var.) de vendas no ano: Para diluir

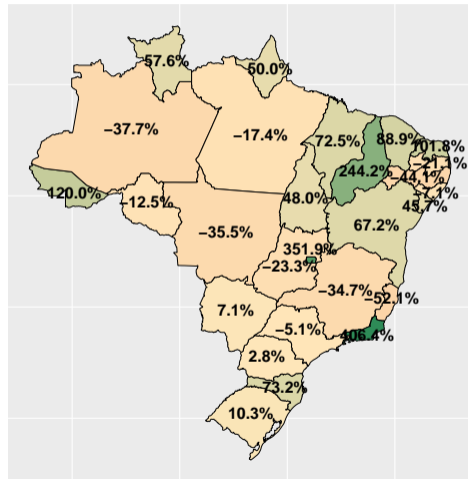


Fonte: ASBRAM

# Vol. (e var.) de vendas no ano: Ureia



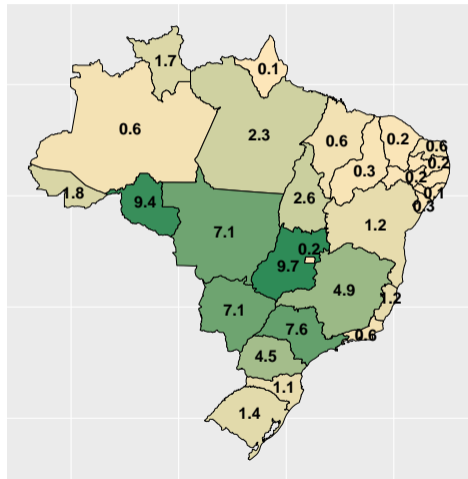
Mil ton.  
2.5  
2.0  
1.5  
1.0  
0.5



(% a.a.)  
4  
3  
2  
1  
0

Fonte: ASBRAM

# Vol. (e var.) de vendas no ano: Proteico

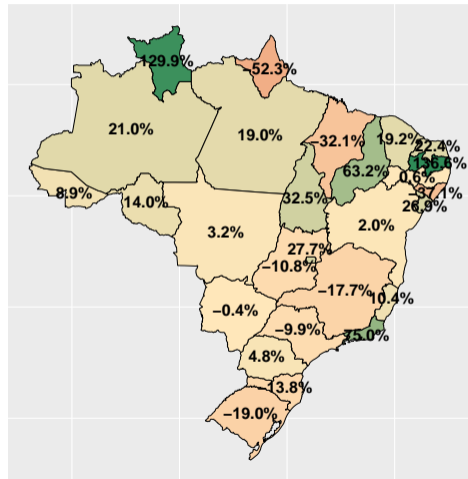


Mil ton.

7.5

5.0

2.5



(% a.a.)

1.0

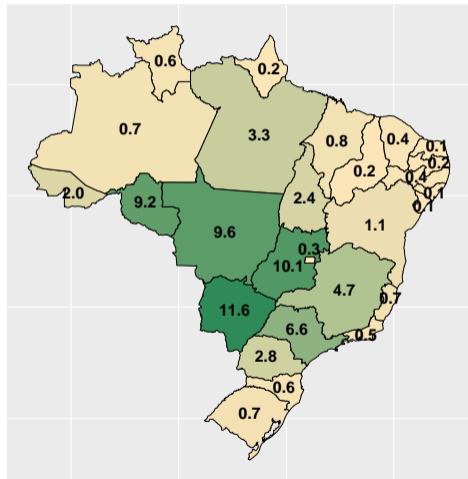
0.5

0.0

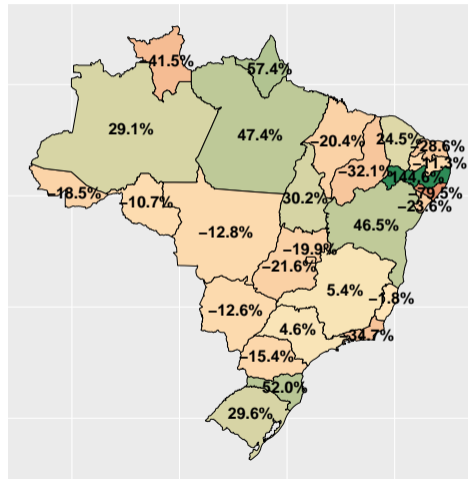
-0.5

Fonte: ASBRAM

# Vol. (e var.) de vendas no ano: Prot. energético



Mil ton.

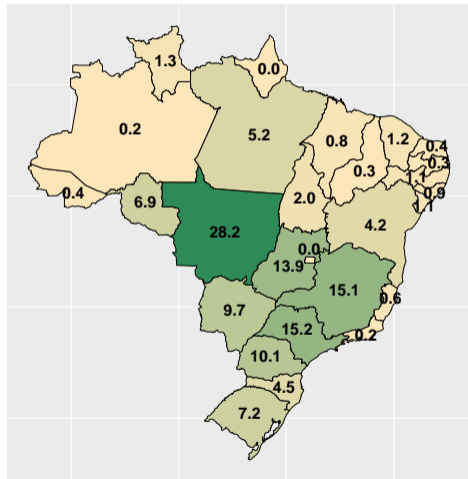


(% a.a.)

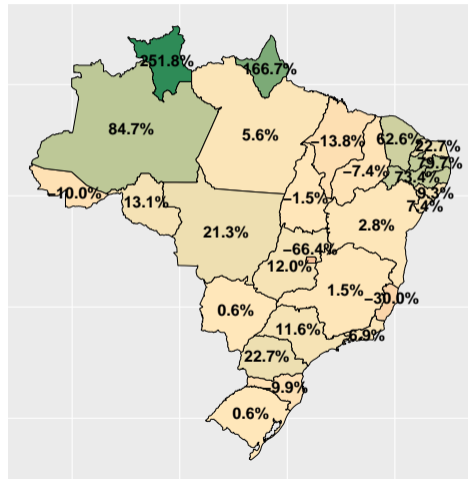


Fonte: ASBRAM

# Vol. (e var.) de vendas no ano: Núcleos



Mil ton.

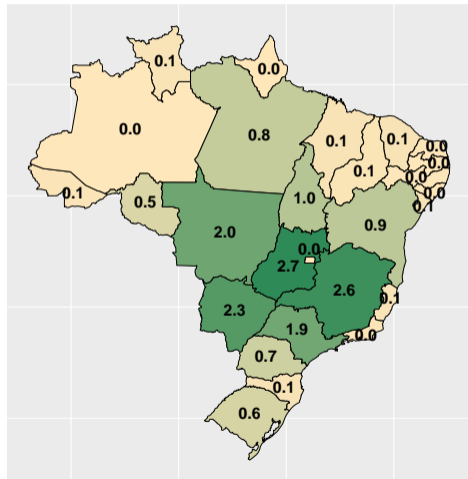


(% a.a.)

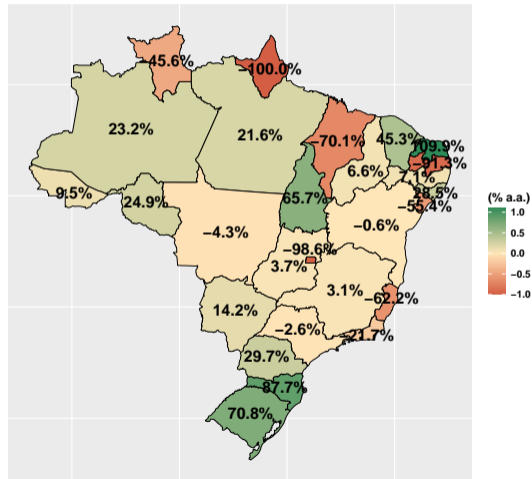


Fonte: ASBRAM

# Vol. (e var.) de vendas no ano: Concentrado



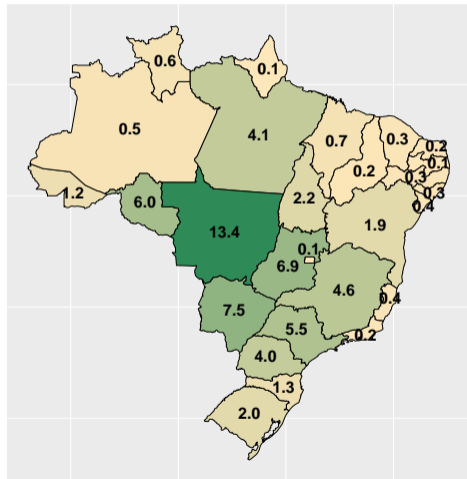
Mil ton.  
2.5  
2.0  
1.5  
1.0  
0.5  
0.0



(% a.a.)  
1.0  
0.5  
0.0  
-0.5  
-1.0

Fonte: ASBRAM

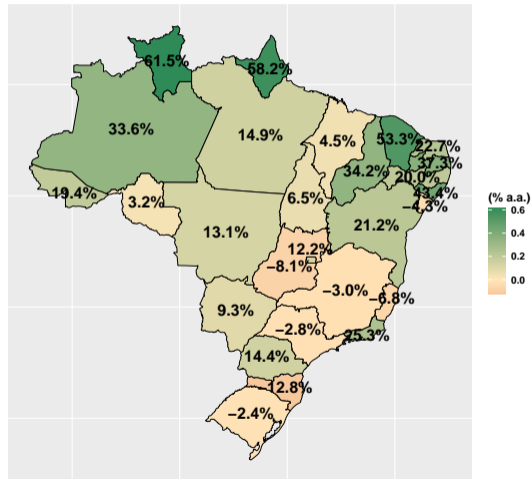
# Número médio (e var.) de animais suplementados no ano



Mi cab.

10

5



(% a.a.)

0.6

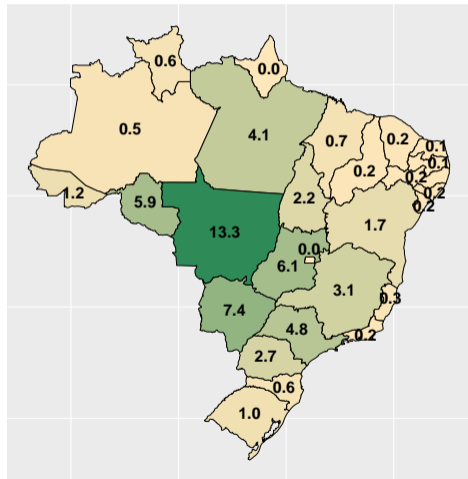
0.4

0.2

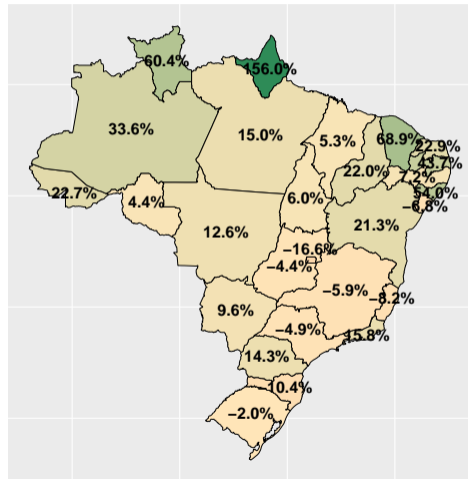
0.0

Fonte: ASBRAM

# Número médio (e var.) de animais suplementados no ano - corte



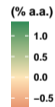
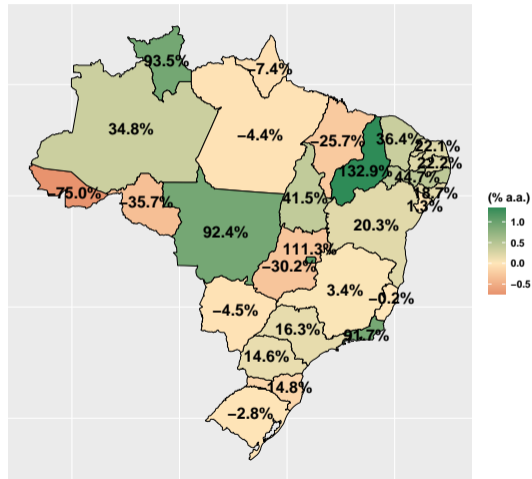
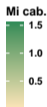
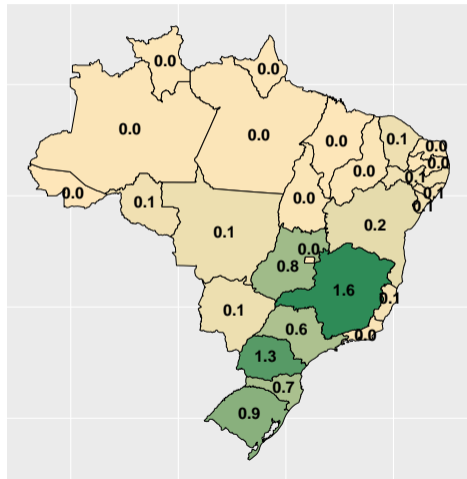
Mi cab.  
12.5  
10.0  
7.5  
5.0  
2.5



(% a.a.)  
1.5  
1.0  
0.5  
0.0

Fonte: ASBRAM

# Número médio (e var.) de animais suplementados no ano - leite



Fonte: ASBRAM