

Pesquisa Trimestral do Abate de Animais

IBGE

4º trimestre 2025

1 Quantidade de animais abatidos: Brasil

2 Quantidade de animais abatidos: UFs

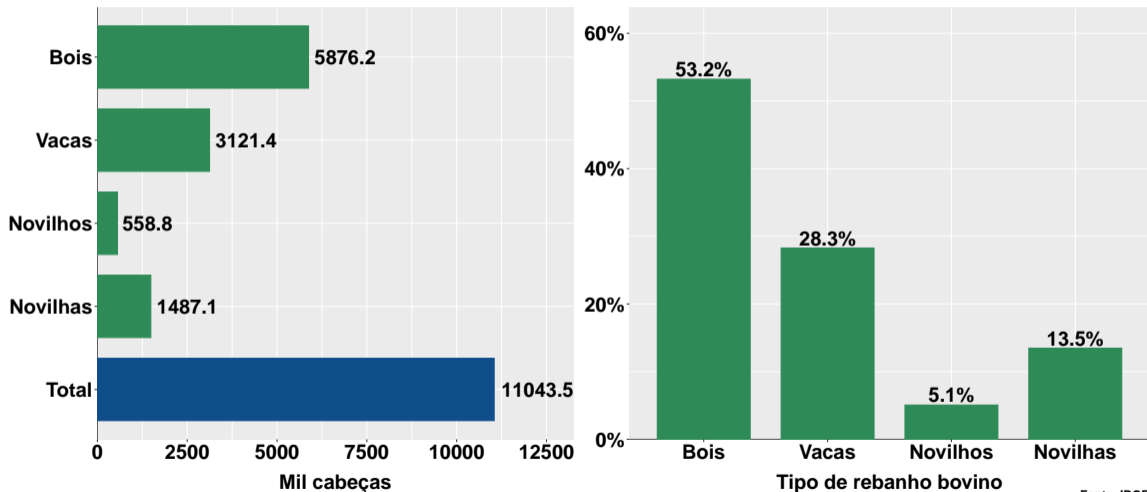
3 Peso total das carcaças: Brasil

4 Peso total das carcaças: UFs

Section 1

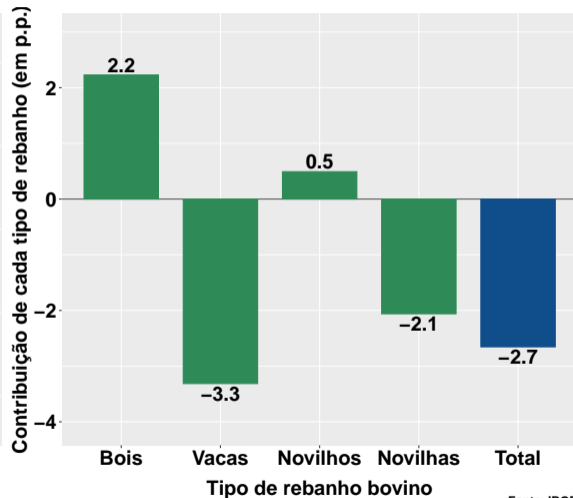
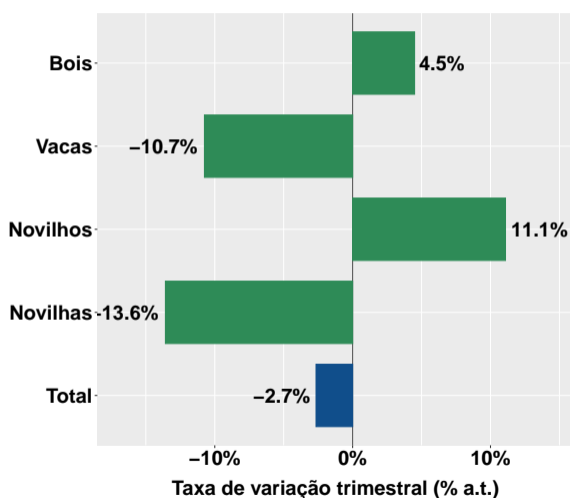
Quantidade de animais abatidos: Brasil

Qtde. de abates no trimestre e participação por tipo de rebanho



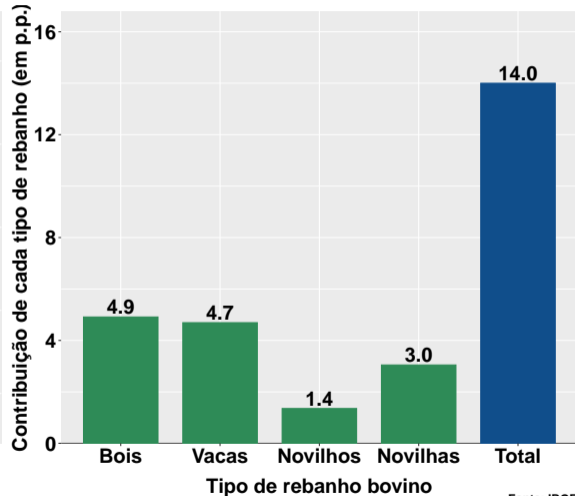
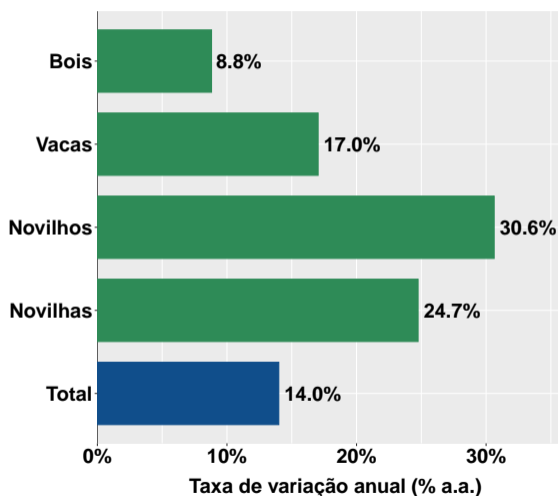
Fonte: IBGE

Abates: var. trimestral e contribuição por tipo de rebanho



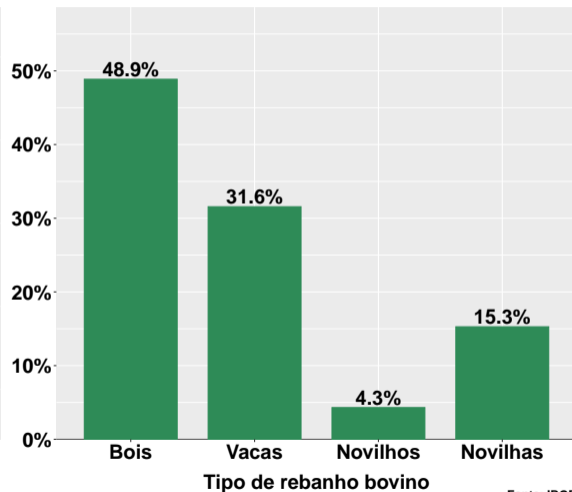
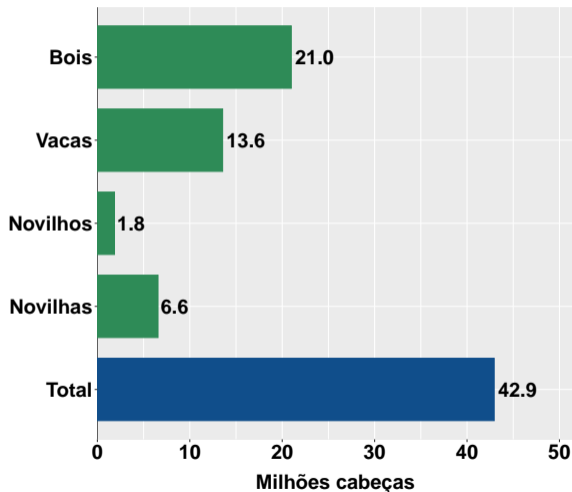
Fonte: IBGE

Abates: var. interanual e contribuição por tipo de rebanho



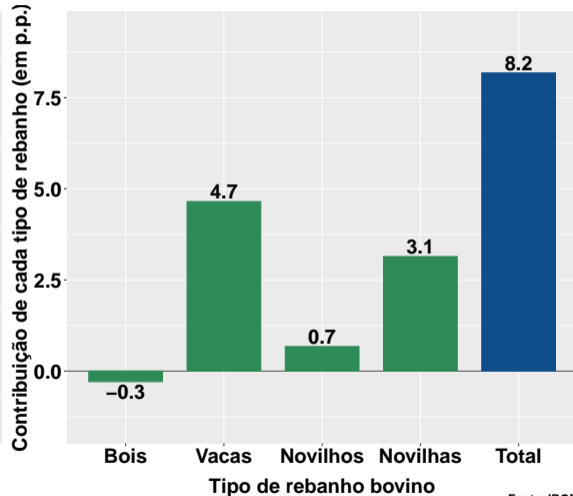
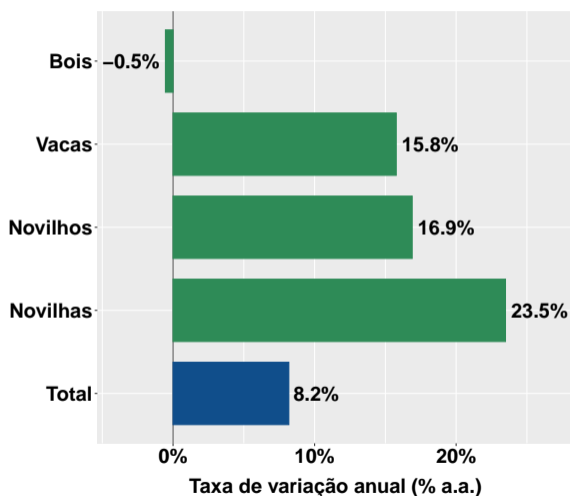
Fonte: IBGE

Qtde. abates acum. no ano e participação por tipo de rebanho



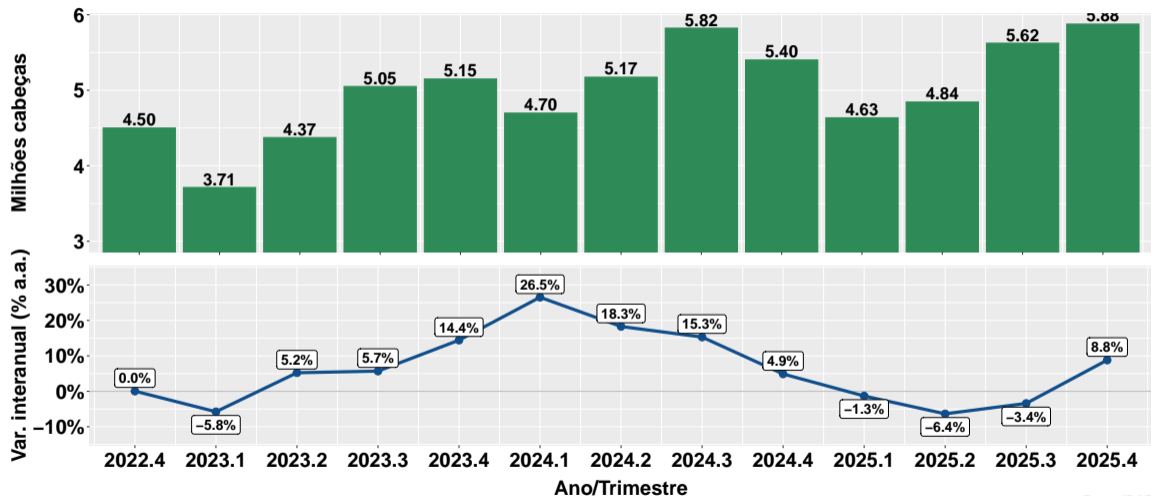
Fonte: IBGE

Abates: var. acumulada no ano e contribuição por tipo de rebanho



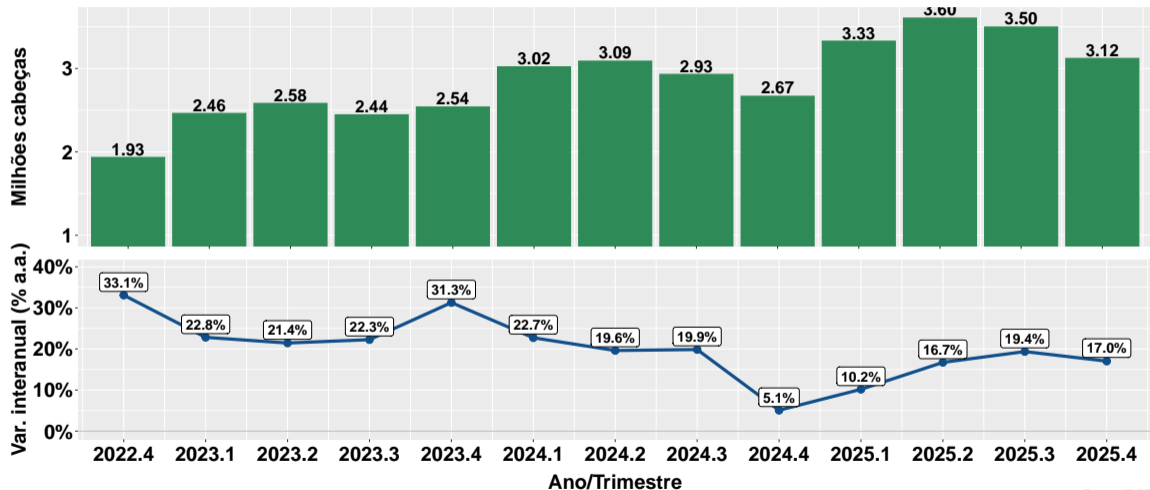
Fonte: IBGE

Bois: Qtde. de abates e var. interanual



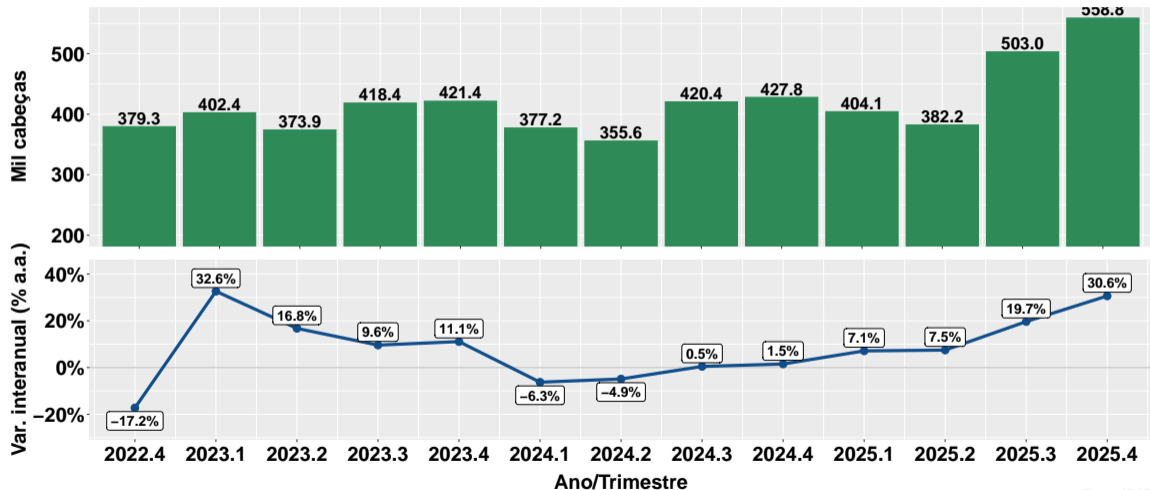
Fonte: IBGE

Vacas: Qtde. de abates e var. interanual



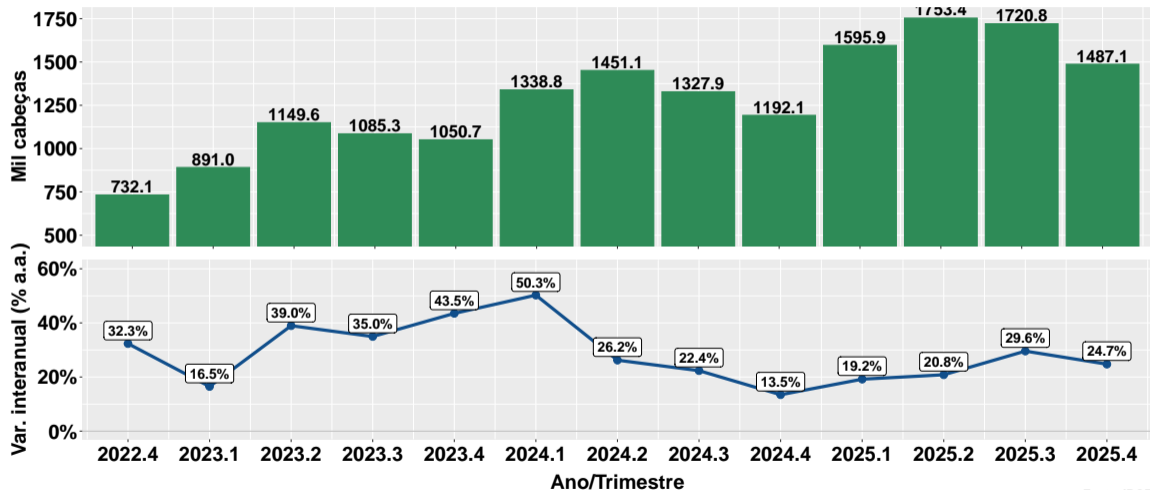
Fonte: IBGE

Novilhos: Qtde. de abates e var. interanual



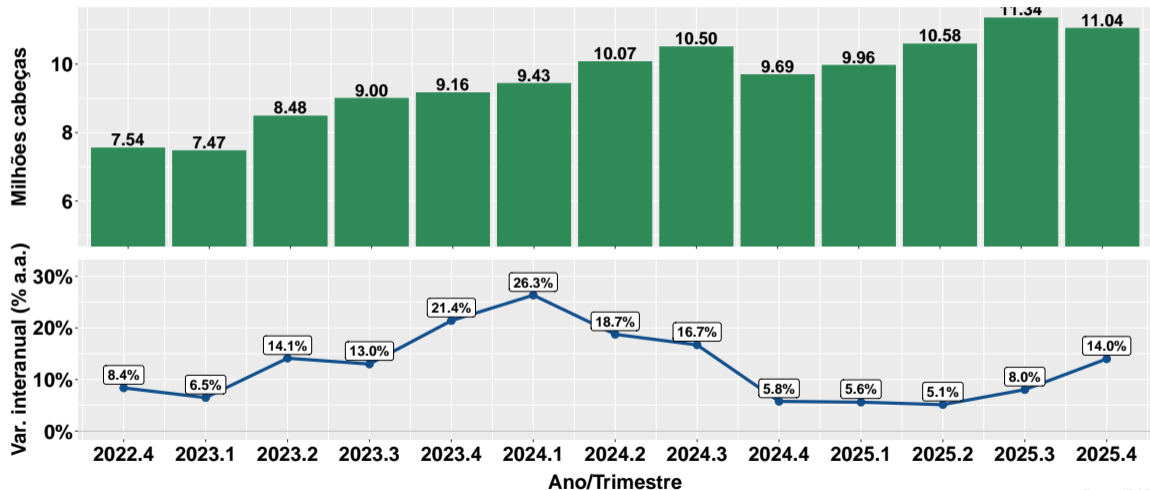
Fonte: IBGE

Novilhas: Qtde. de abates e var. interanual



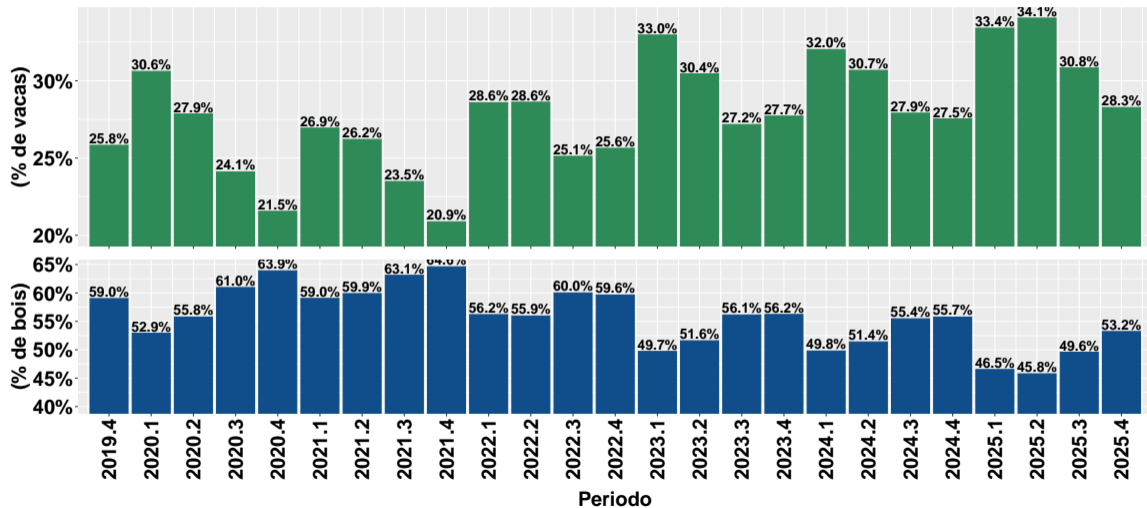
Fonte: IBGE

Qtde. total de abates e var. interanual

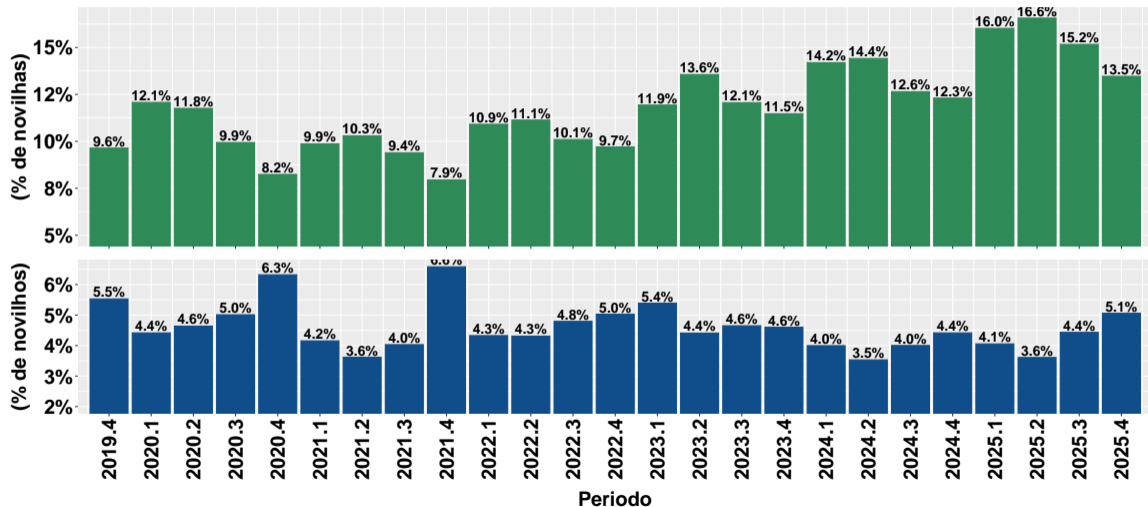


Fonte: IBGE

Participação de vacas e bois no total de abates



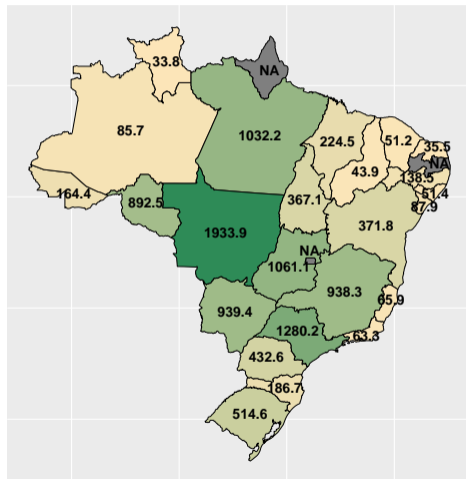
Participação de novilhas e novilhos no total de abates



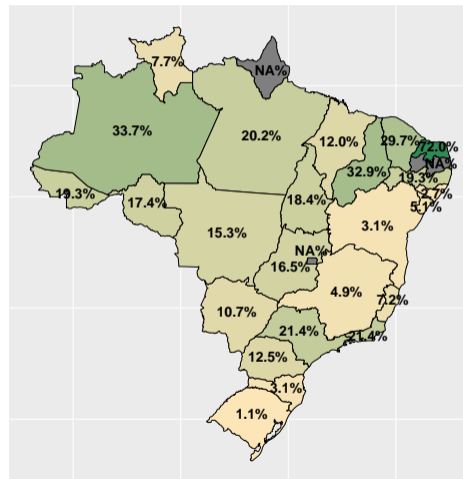
Section 2

Quantidade de animais abatidos: UFs

Qtde. total de abates e var. interanual



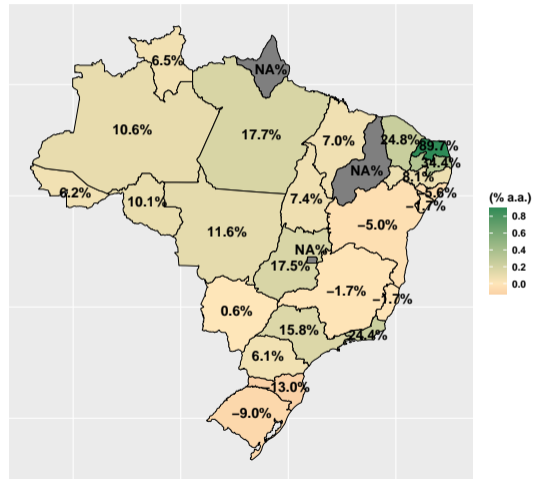
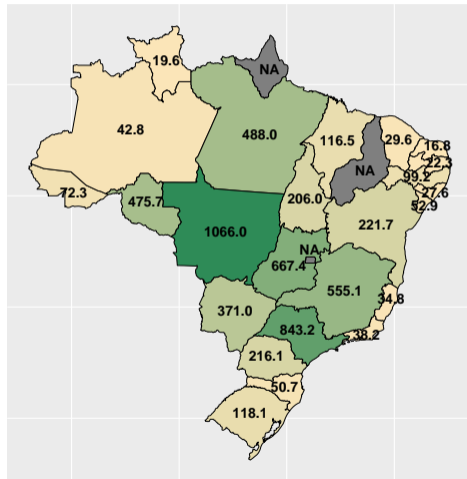
Mil cab.
1500
1000
500



(% a.a.)
0.6
0.4
0.2

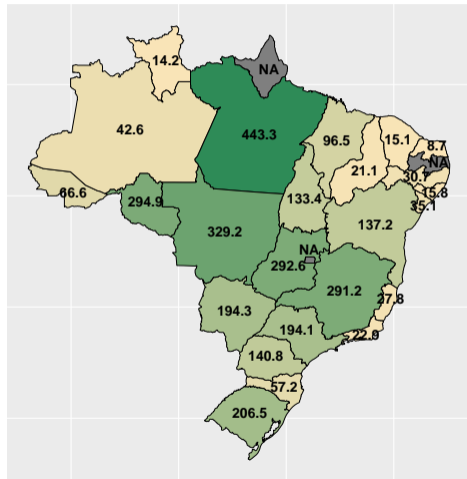
Fonte: IBGE

Bois: Qtde. de abates e var. interanual

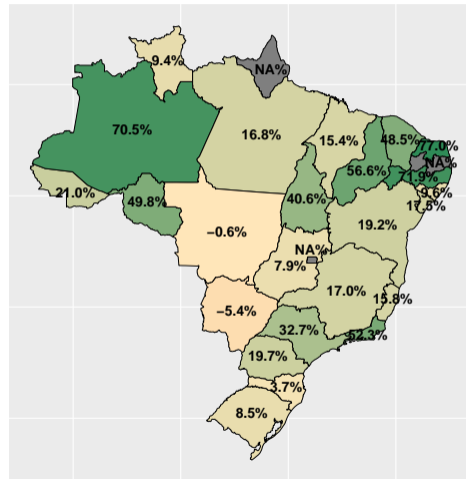


Fonte: IBGE

Vacas: Qtde. de abates e var. interanual



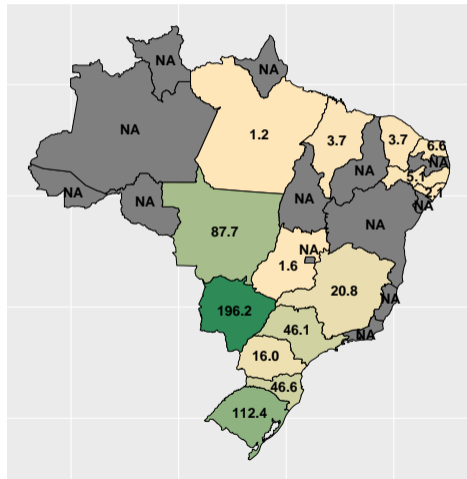
Mil cab.
400
300
200
100



(% a.a.)
0.6
0.4
0.2
0.0

Fonte: IBGE

Novilhos: Qtde. de abates e var. interanual

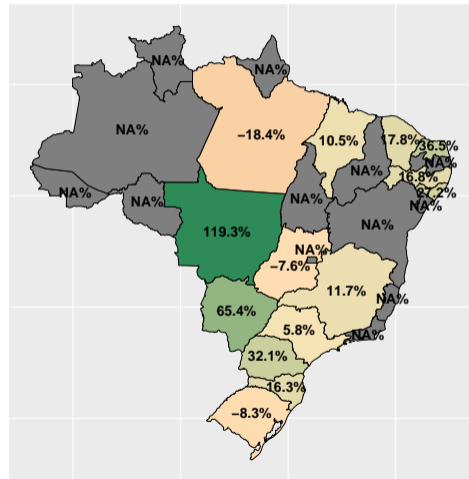


Mil cab.

150

100

50



(% a.a.)

1.00

0.75

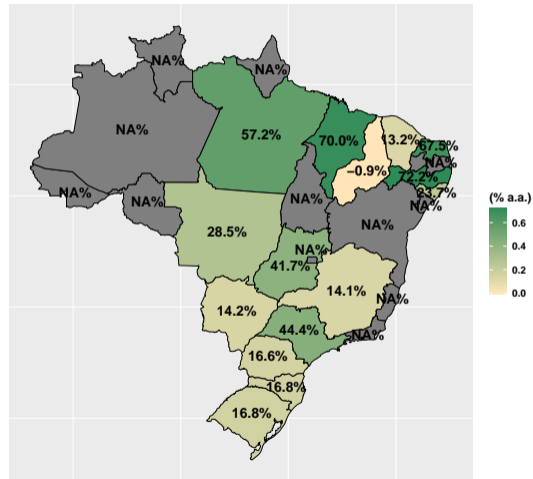
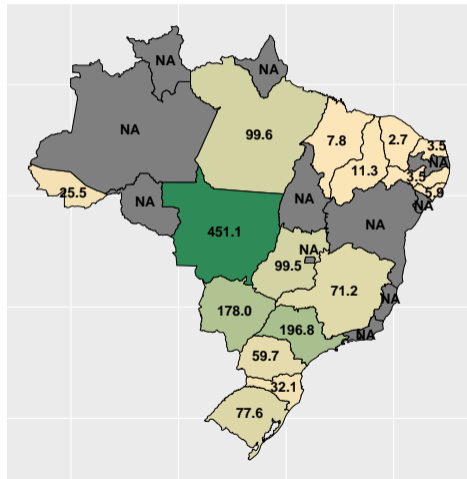
0.50

0.25

0.00

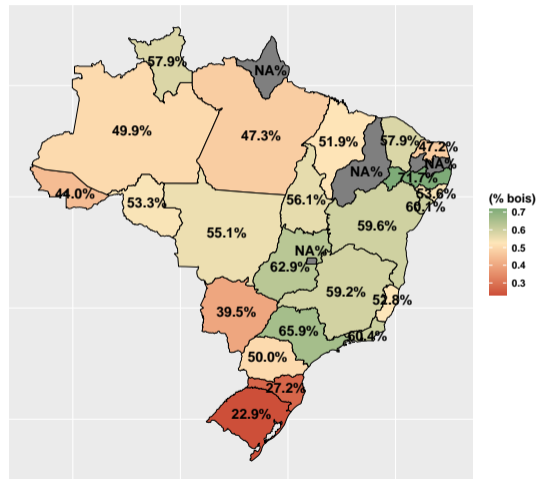
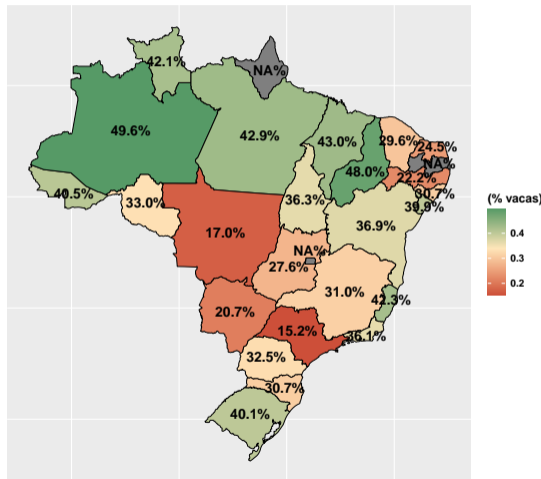
Fonte: IBGE

Novilhas: Qtde. de abates e var. interanual



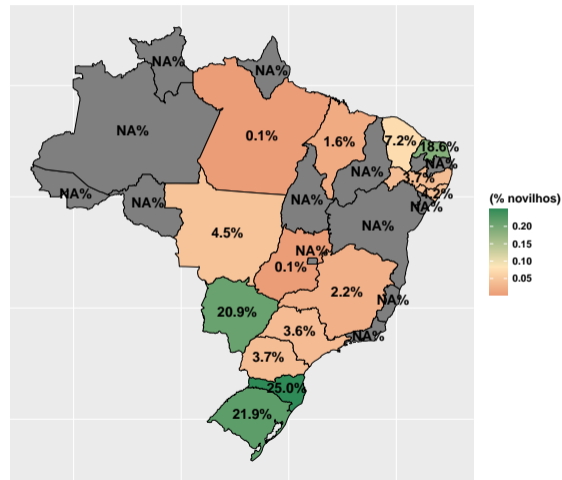
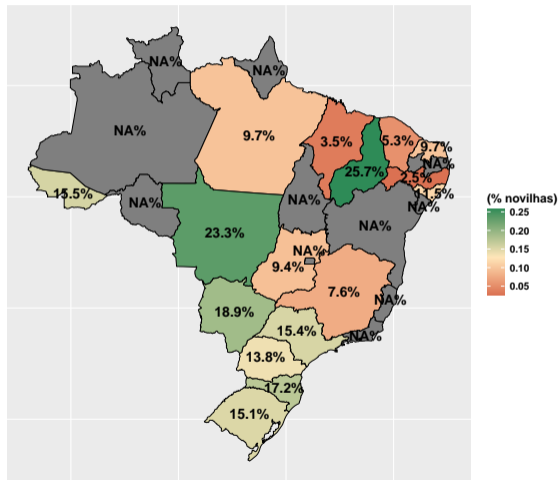
Fonte: IBGE

Participação de vacas e bois no total de abates



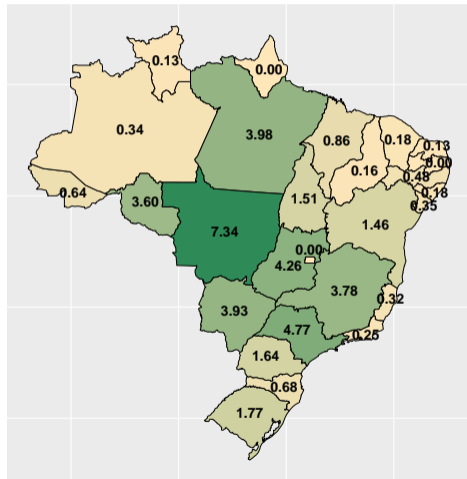
Fonte: IBGE

Participação de novilhas e novilhos no total de abates



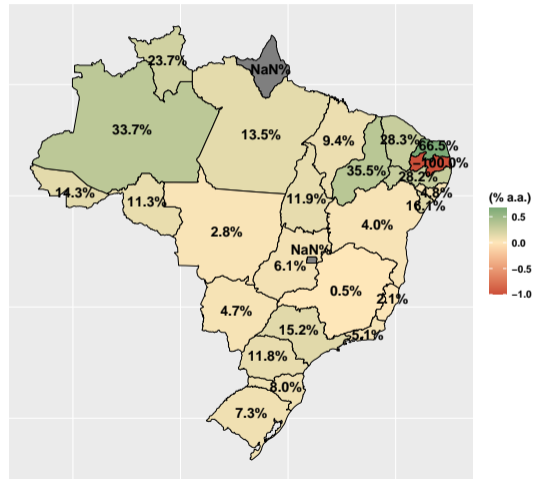
Fonte: IBGE

Qtde. total de abates e var. acum. ano



Mi. cab.

6
4
2
0

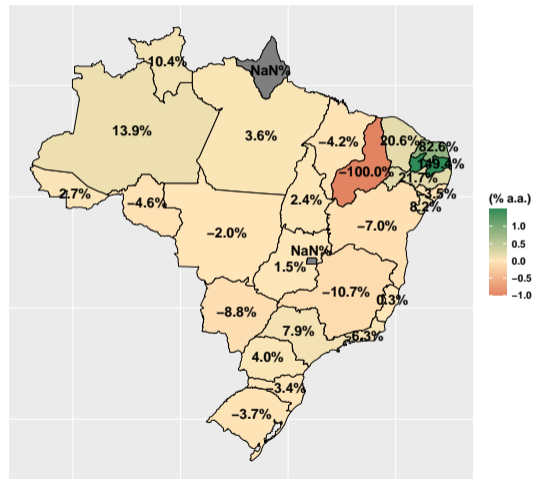
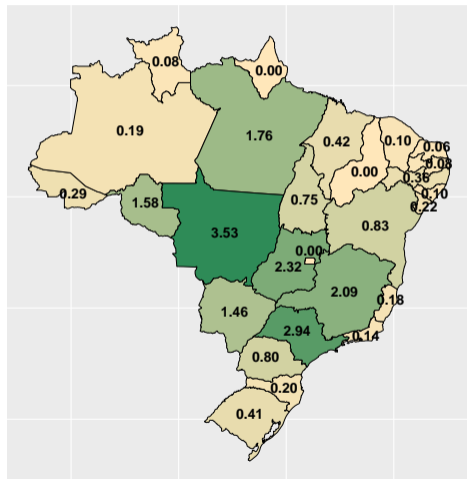


(% a.a.)

0.5
0.0
-0.5
-1.0

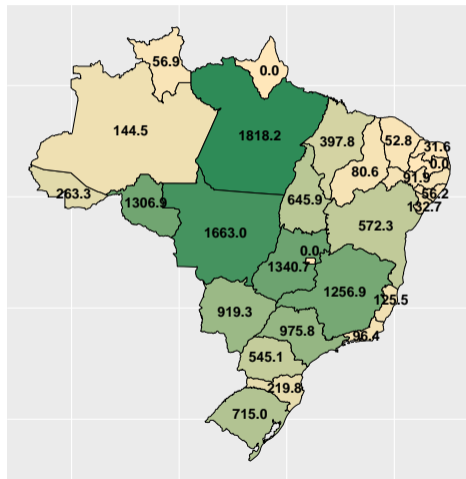
Fonte: IBGE

Bois: Qtde. de abates e var. acum. ano

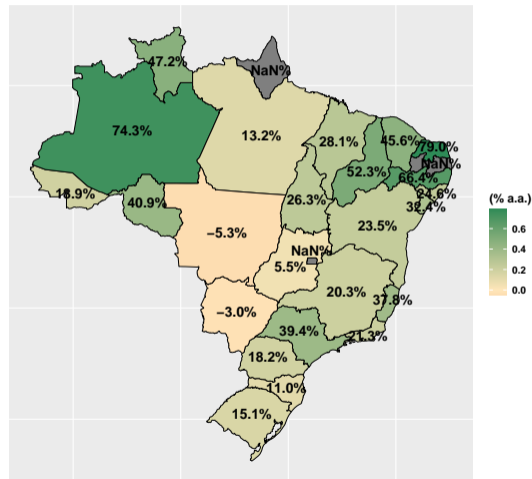


Fonte: IBGE

Vacas: Qtde. de abates e var. acum. ano



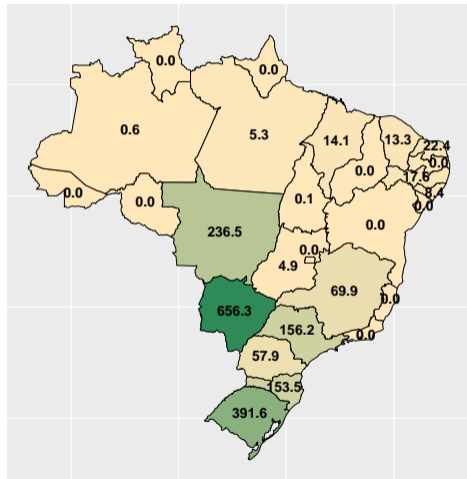
Mil cab.
1500
1000
500
0



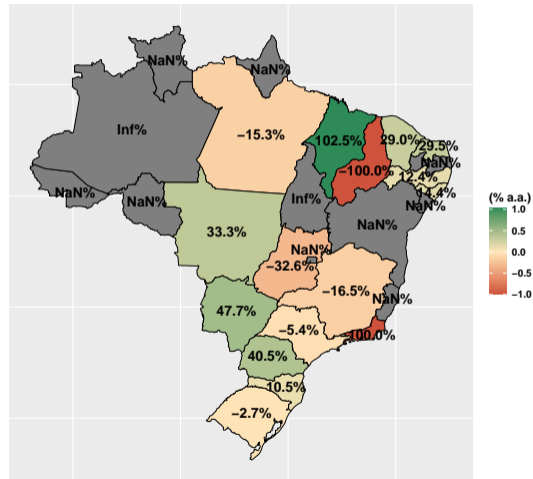
(% a.a.)
0.6
0.4
0.2
0.0

Fonte: IBGE

Novilhos: Qtde. de abates e var. acum. ano



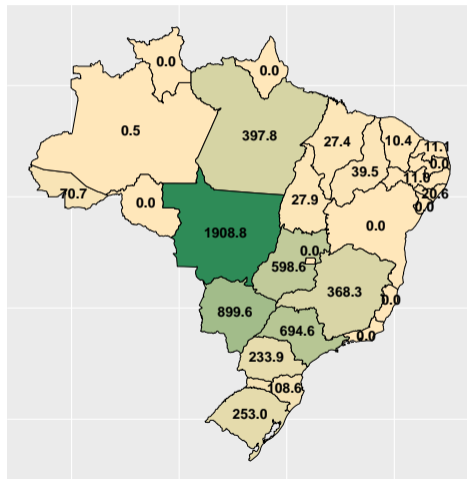
Mil cab.
600
400
200
0



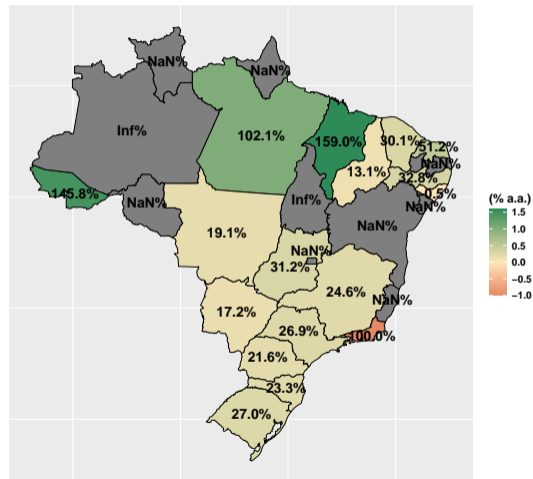
(% a.a.)
1.0
0.5
0.0
-0.5
-1.0

Fonte: IBGE

Novilhas: Qtde. de abates e var. acum. ano



Mil cab.
1500
1000
500
0



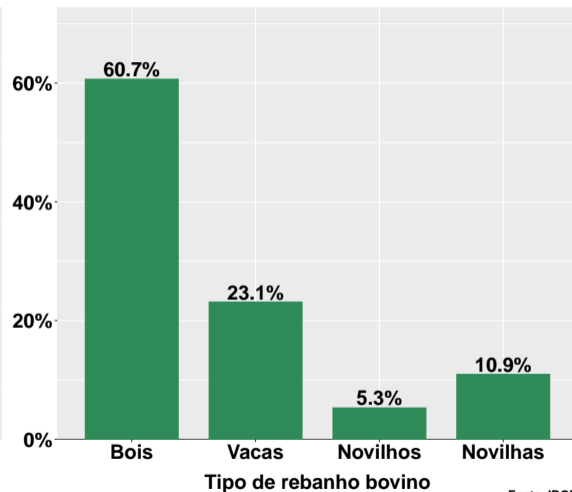
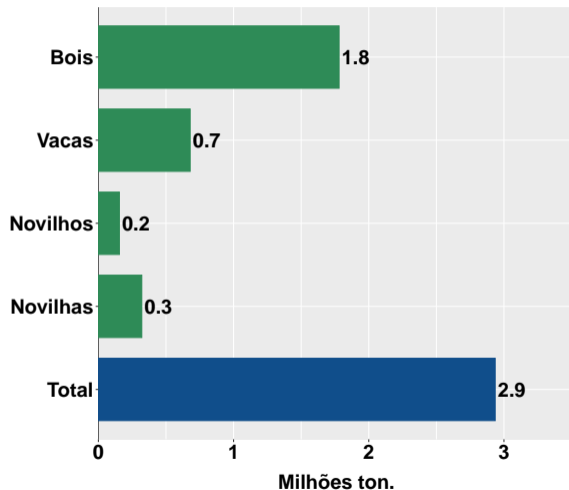
(% a.a.)
1.5
1.0
0.5
0.0
-0.5
-1.0

Fonte: IBGE

Section 3

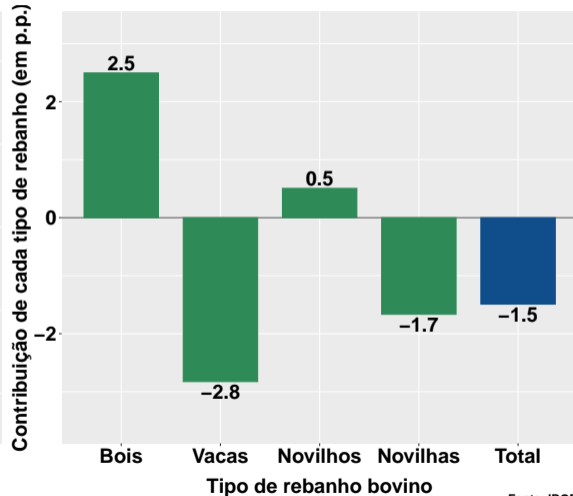
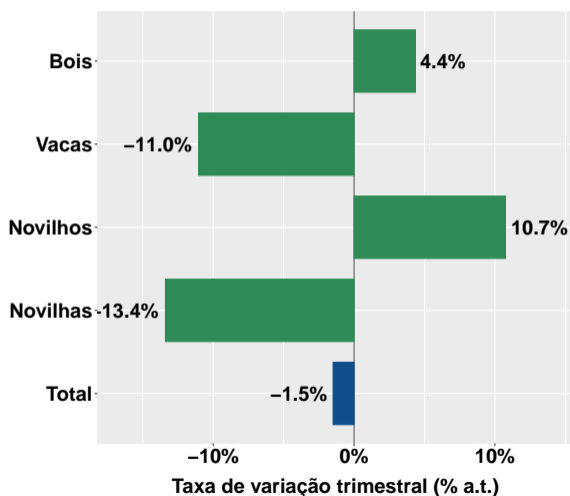
Peso total das carcaças: Brasil

Peso carcaças no trimestre e participação por tipo de rebanho



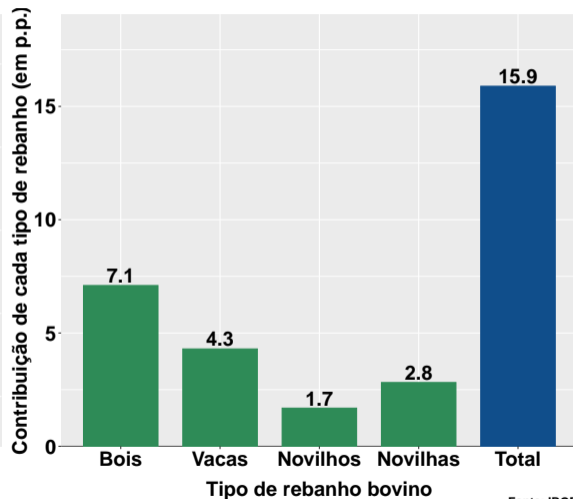
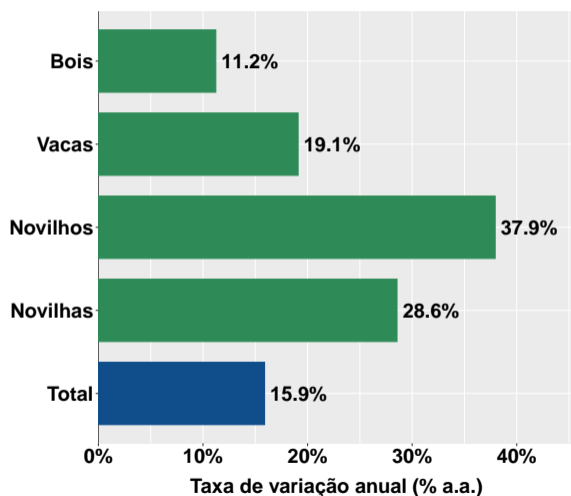
Fonte: IBGE

Peso carcaças: var. trimestral e contribuição por tipo de rebanho



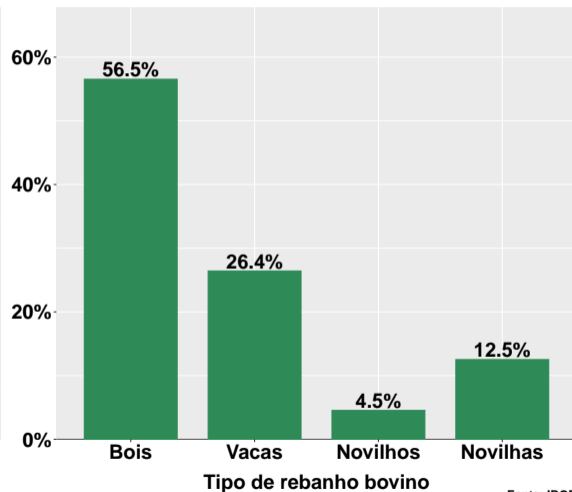
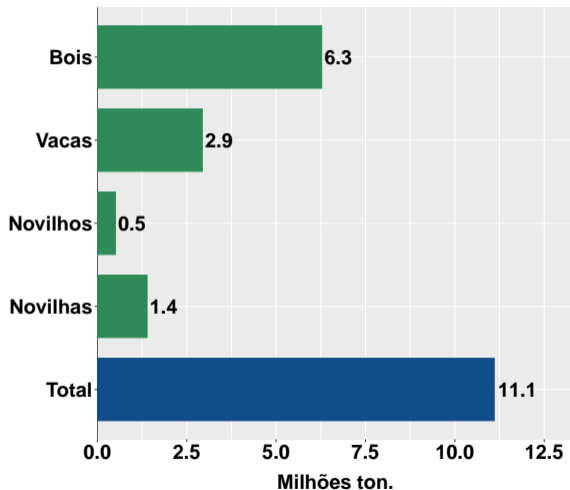
Fonte: IBGE

Peso carcaças: var. interanual e contribuição por tipo de rebanho



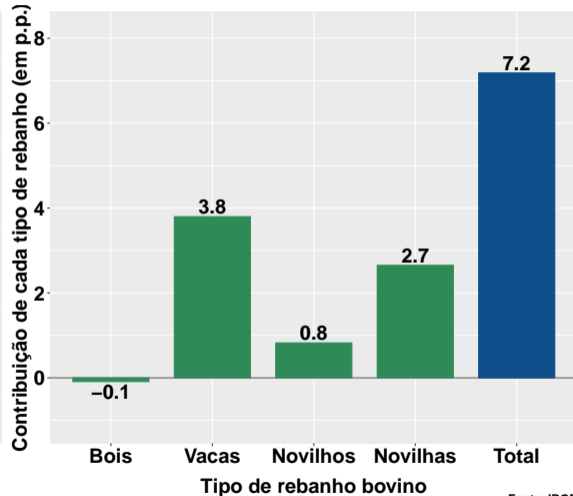
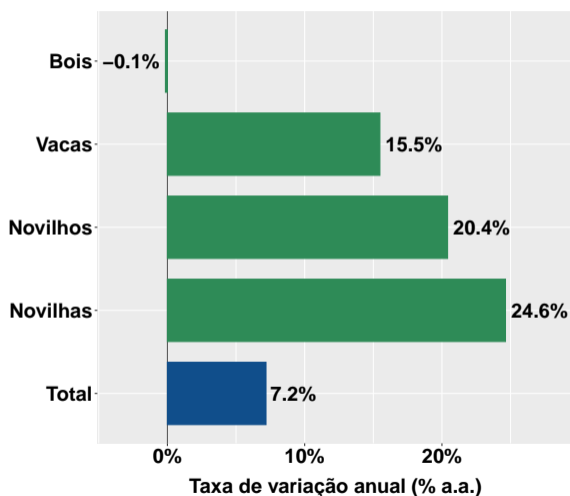
Fonte: IBGE

Peso carcaças acum. no ano e participação por tipo de rebanho



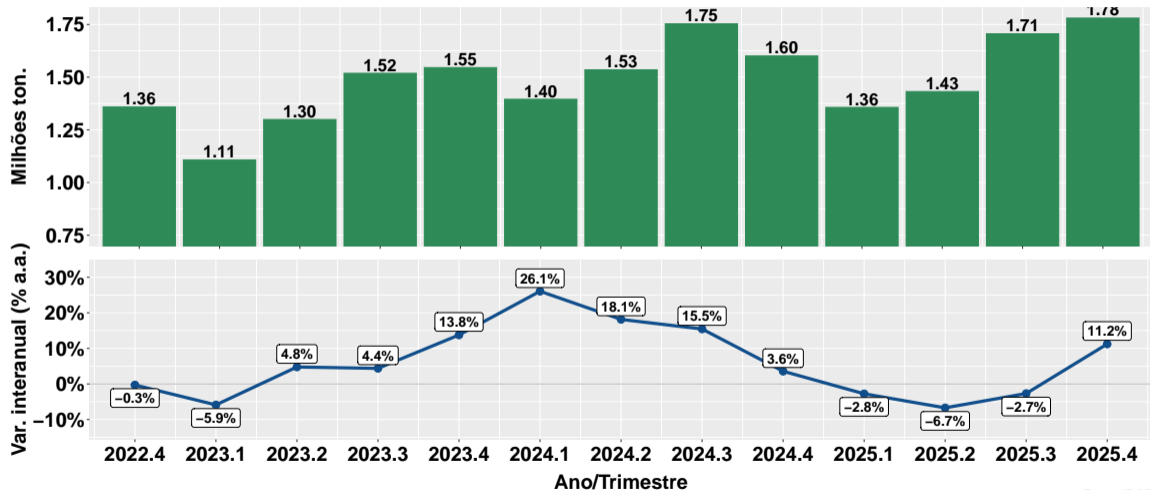
Fonte: IBGE

Peso carcaças: var. acum. ano e contribuição por tipo de rebanho



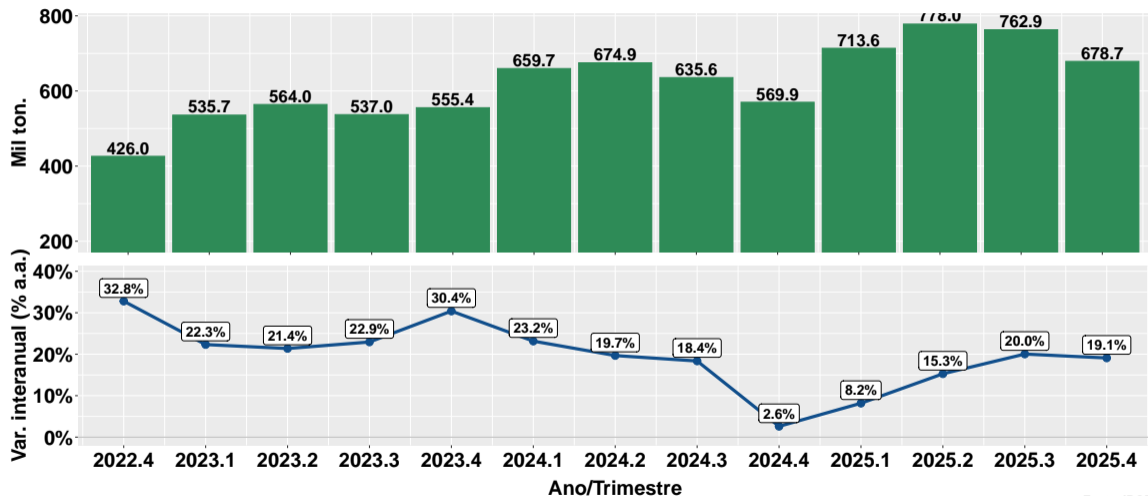
Fonte: IBGE

Bois: Peso carcaças e var. interanual



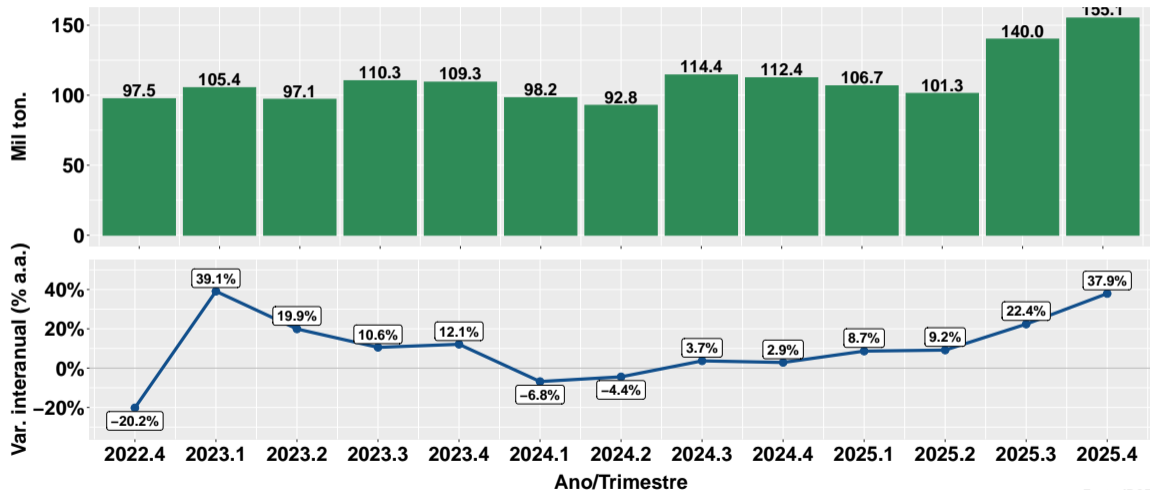
Fonte: IBGE

Vacas: Peso carcaças e var. interanual



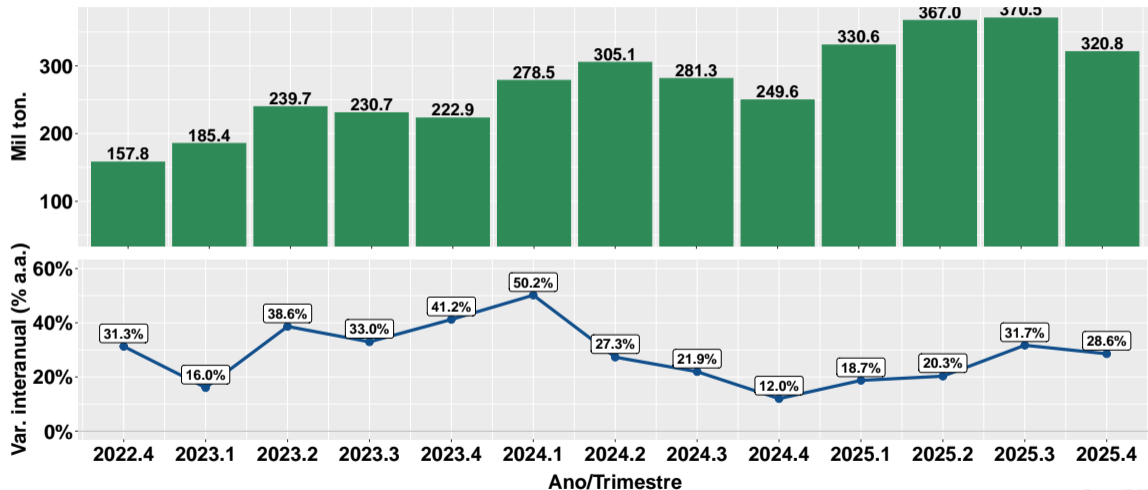
Fonte: IBGE

Novilhos: Peso carcaças e var. interanual



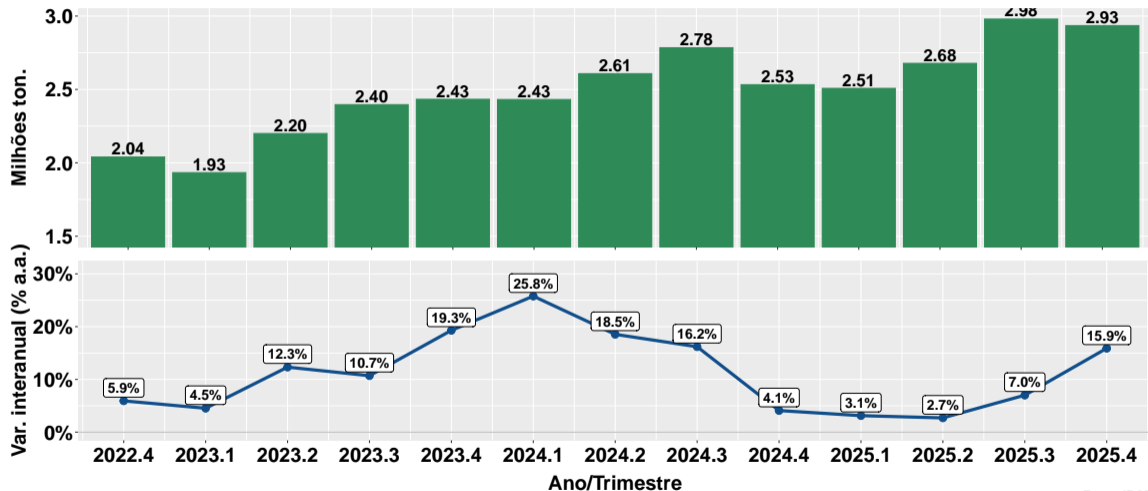
Fonte: IBGE

Novilhas: Peso carcaças e var. interanual



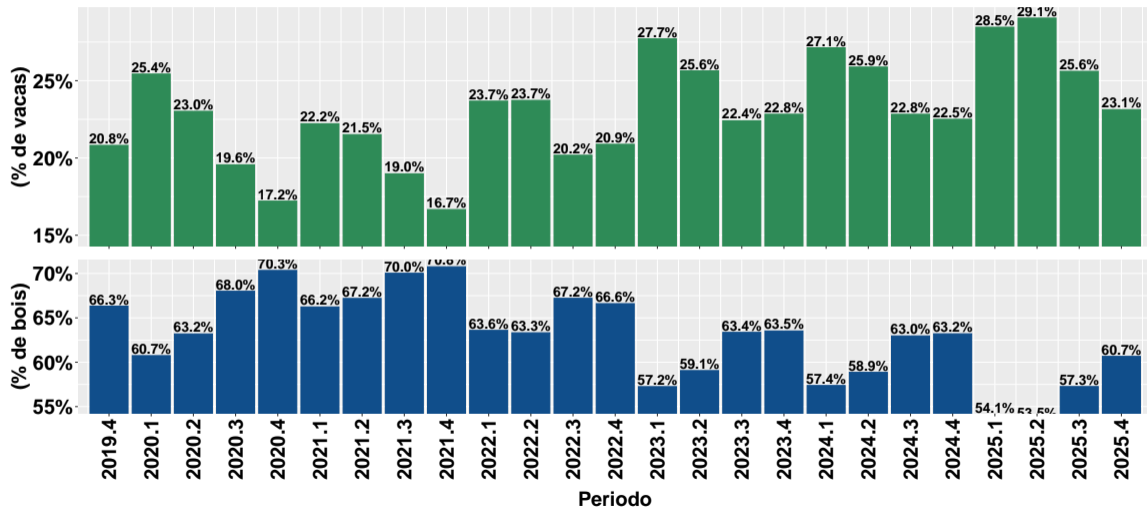
Fonte: IBGE

Peso total das carcaças e var. interanual

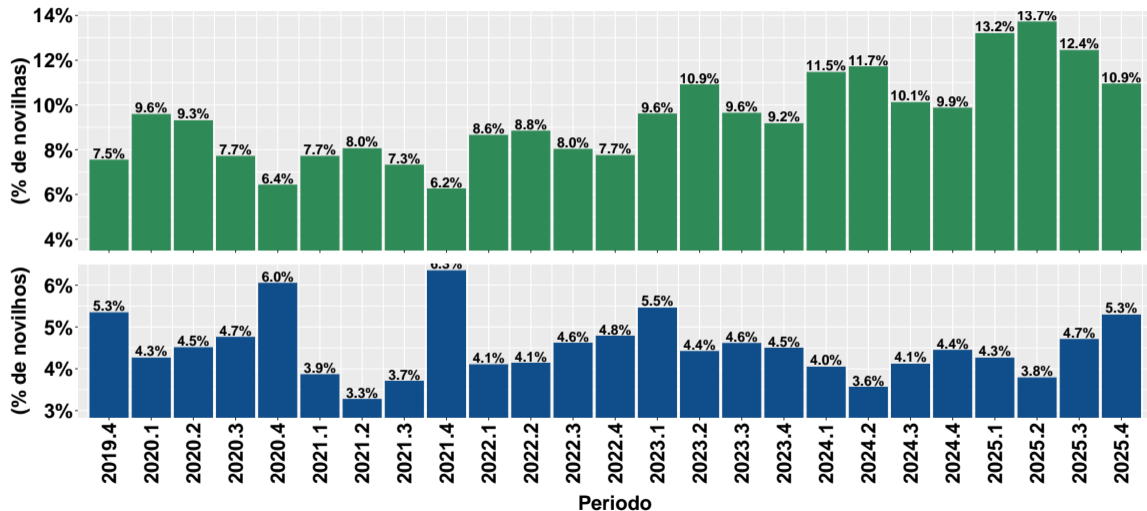


Fonte: IBGE

Participação de vacas e bois no peso total das carcaças



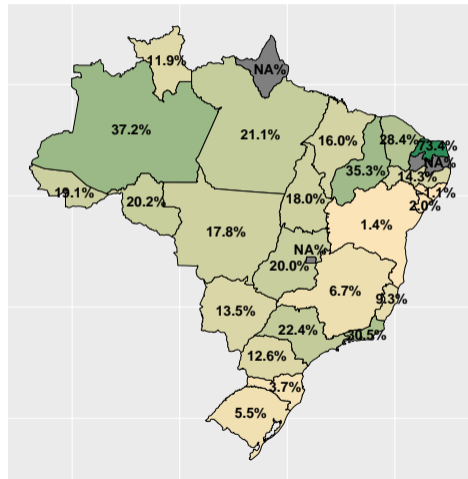
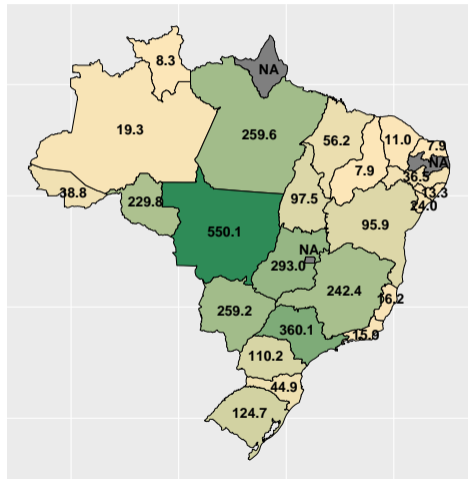
Participação de novilhas e novilhos no peso total das carcaças



Section 4

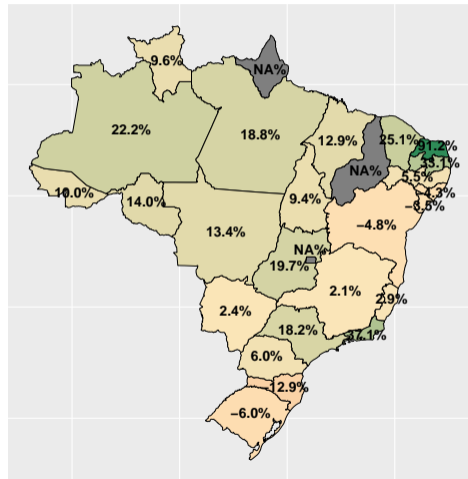
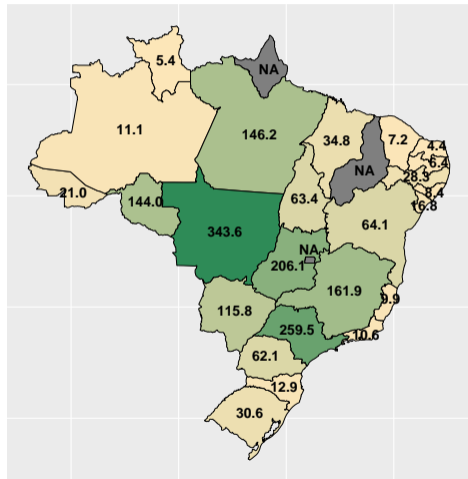
Peso total das carcaças: UFs

Peso total das carcaças e var. interanual



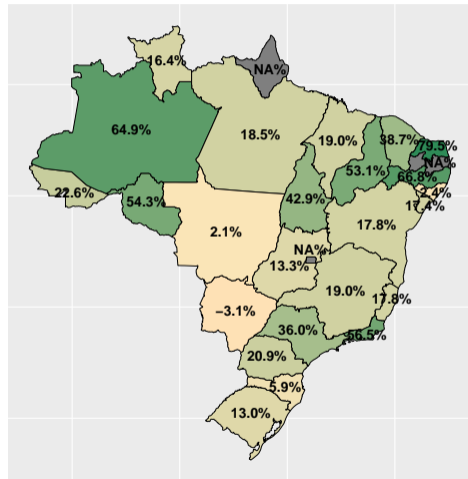
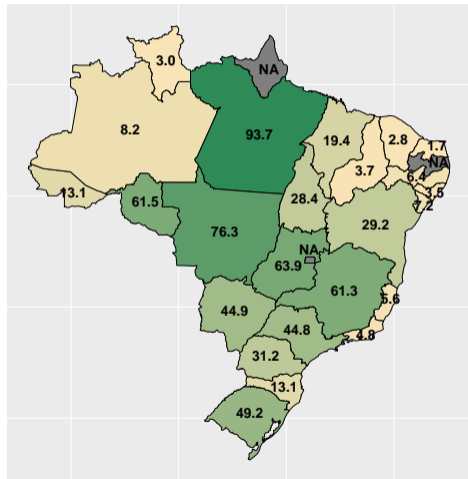
Fonte: IBGE

Bois: Peso carcaças e var. interanual



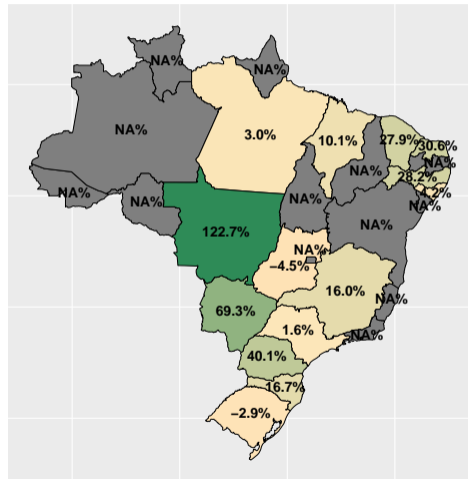
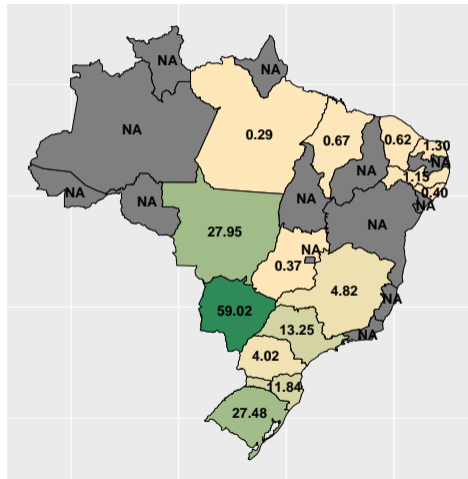
Fonte: IBGE

Vacas: Peso carcaças e var. interanual



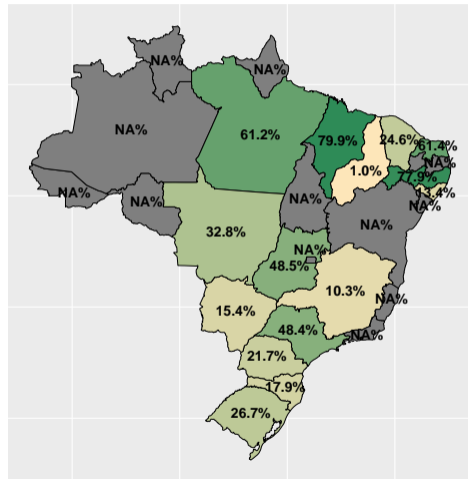
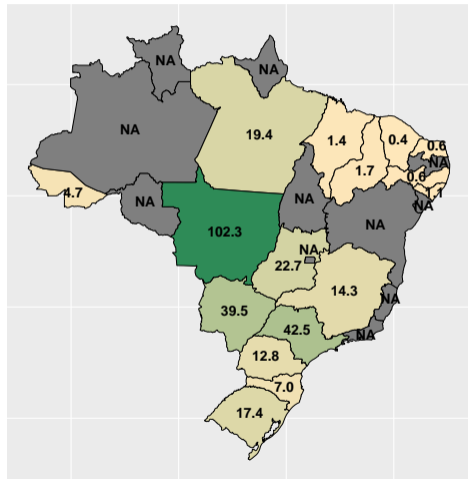
Fonte: IBGE

Novilhos: Peso carcaças e var. interanual



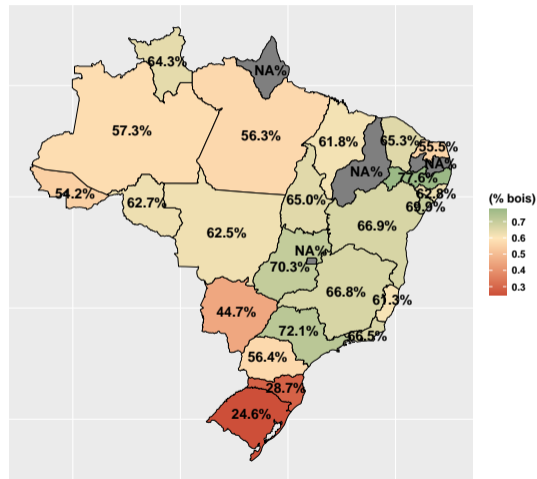
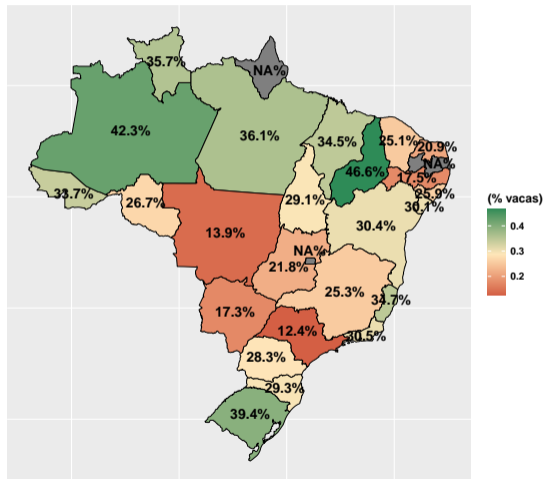
Fonte: IBGE

Novilhas: Peso carcaças e var. interanual



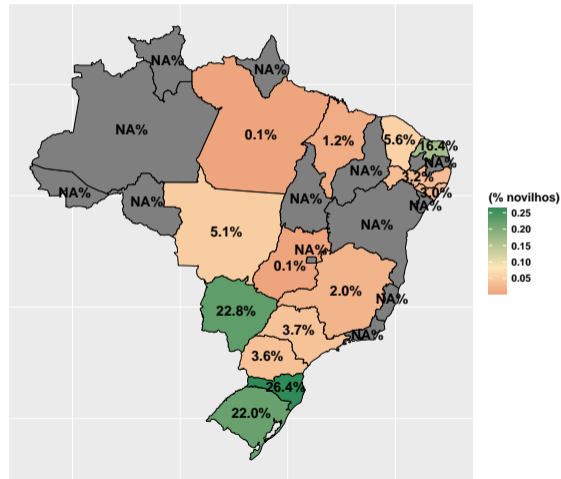
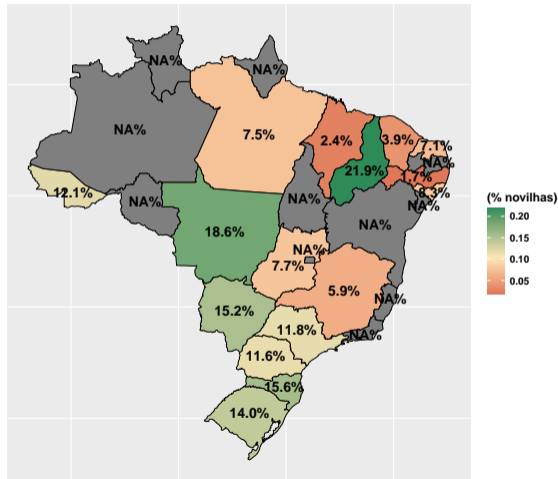
Fonte: IBGE

Participação de vacas e bois no peso total das carcaças



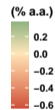
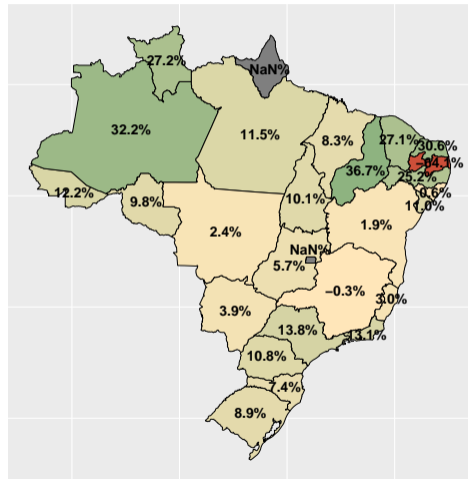
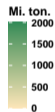
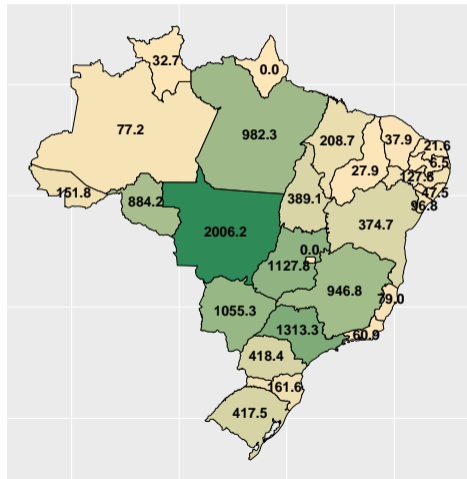
Fonte: IBGE

Participação de novilhas e novilhos no peso total das carcaças



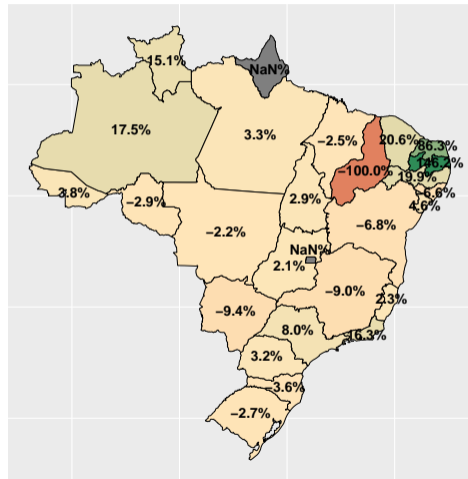
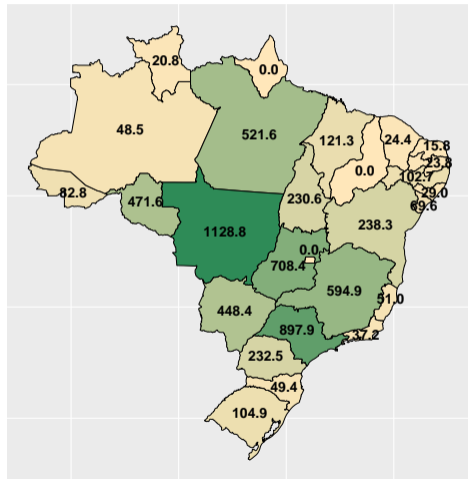
Fonte: IBGE

Peso total das carcaças e var. acum. ano



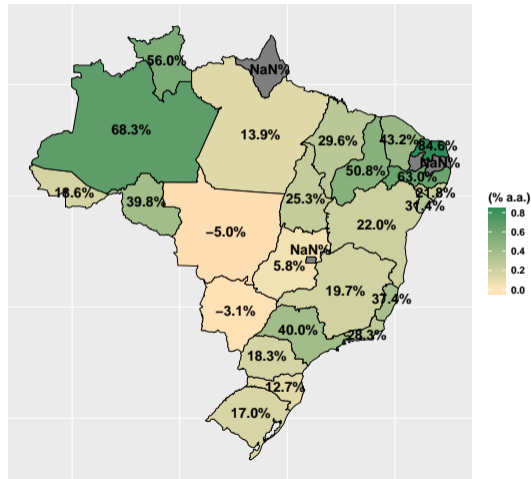
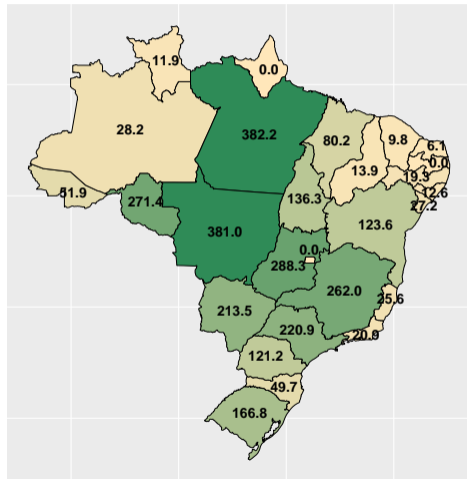
Fonte: IBGE

Bois: Peso carcaças e var. acum. ano



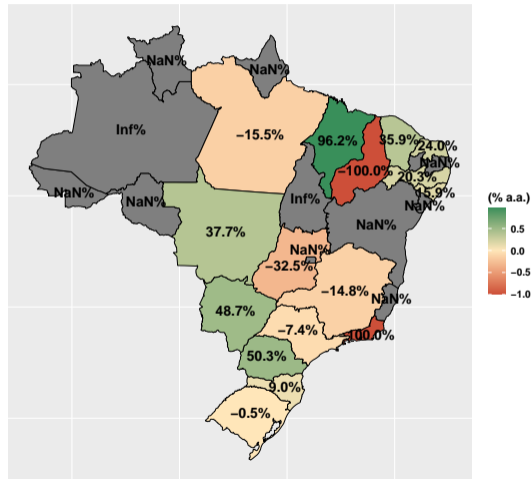
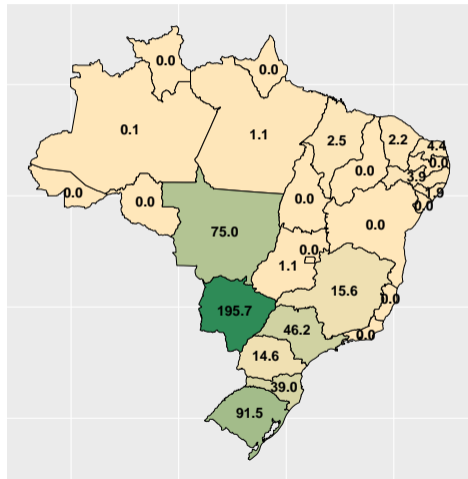
Fonte: IBGE

Vacas: Peso carcaças e var. acum. ano



Fonte: IBGE

Novilhos: Peso carcaças e var. acum. ano



Fonte: IBGE

