

Índice ASBRAM

Desempenho Setembro/2023

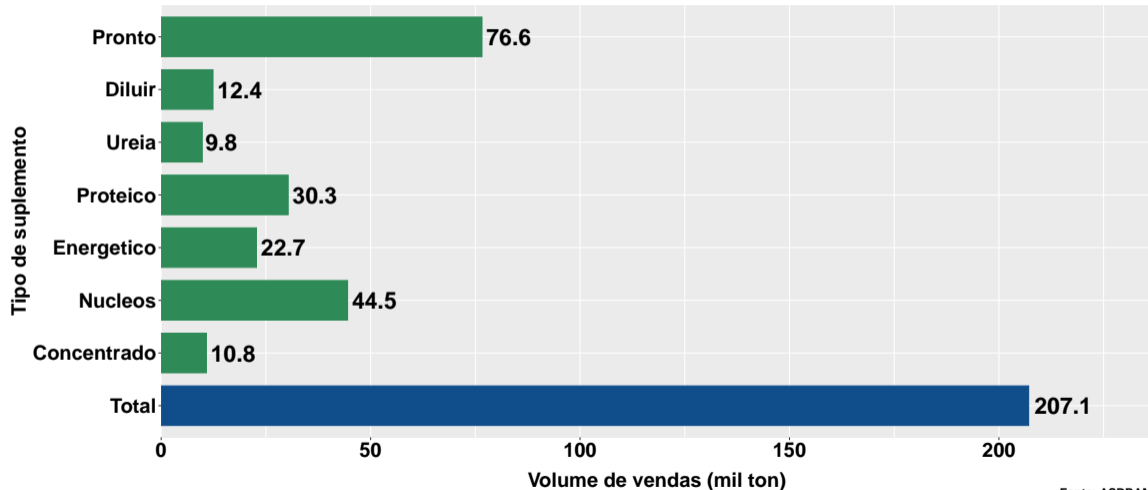
Campo Grande, 19/10/2023

- 1 Volume de vendas de suplementos no Brasil
- 2 Projeções para o final de 2023
- 3 Número de animais suplementados no Brasil
- 4 Desempenho por Unidade da Federação (UF)

Section 1

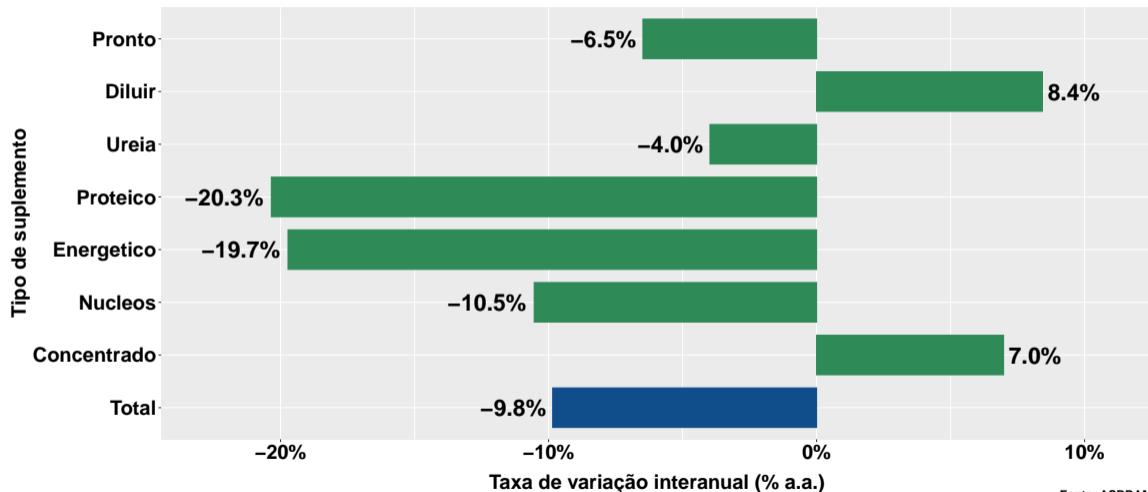
Volume de vendas de suplementos no Brasil

Volume de vendas no mês



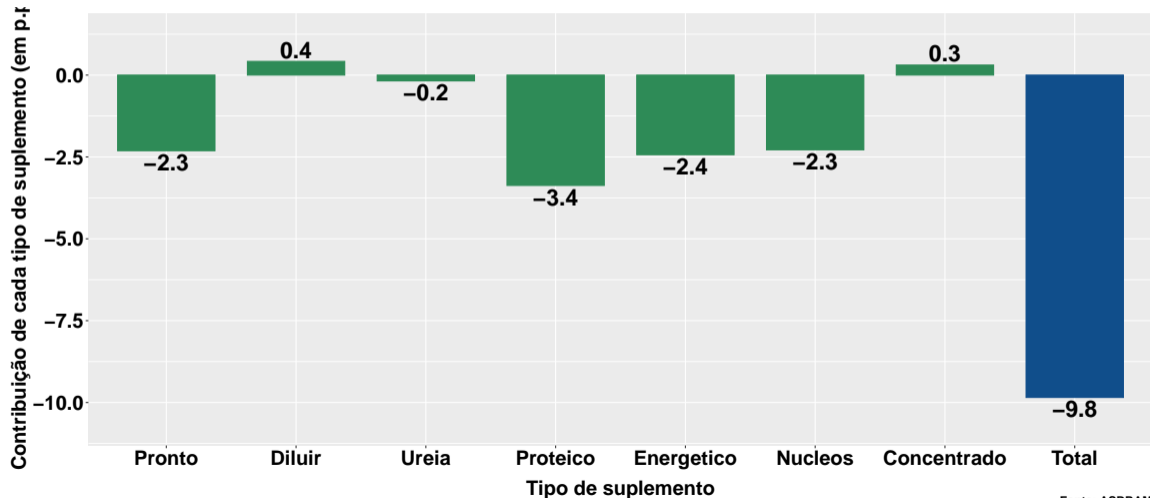
Fonte: ASBRAM

Variação interanual do volume de vendas

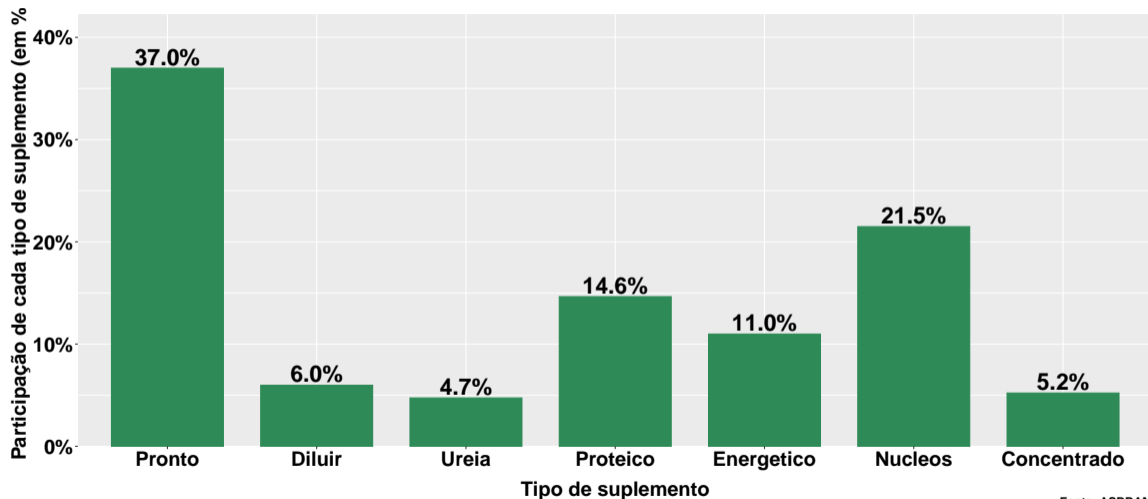


Fonte: ASBRAM

Contribuição de cada suplemento para variação interanual do volume de vendas

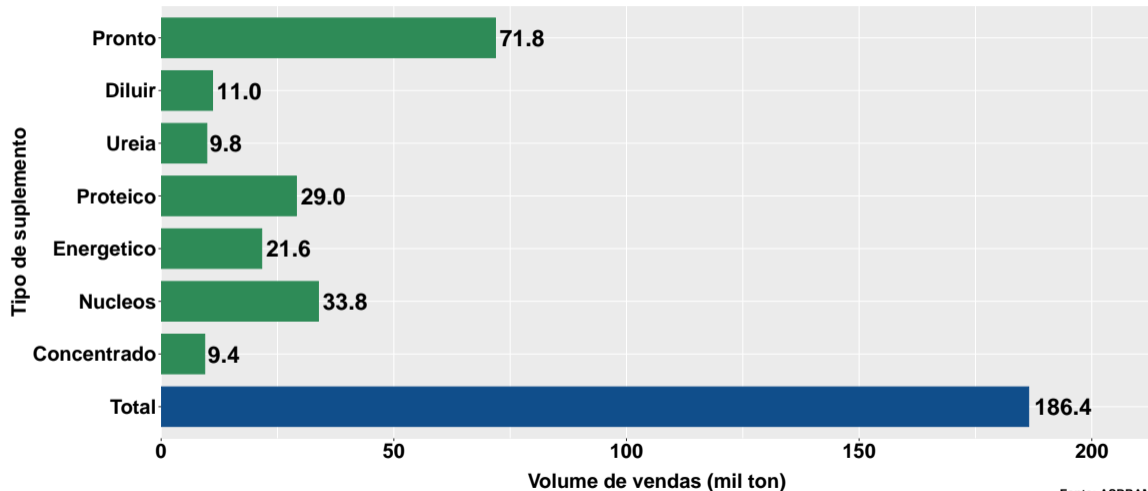


Part. de cada suplemento no volume total de vendas no mês



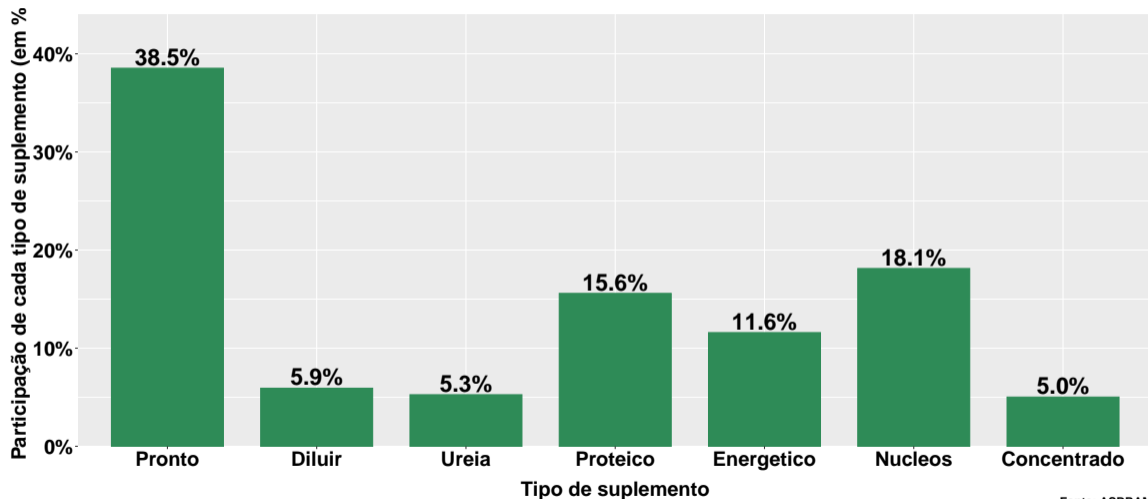
Fonte: ASBRAM

Volume de vendas no mês - pecuária corte



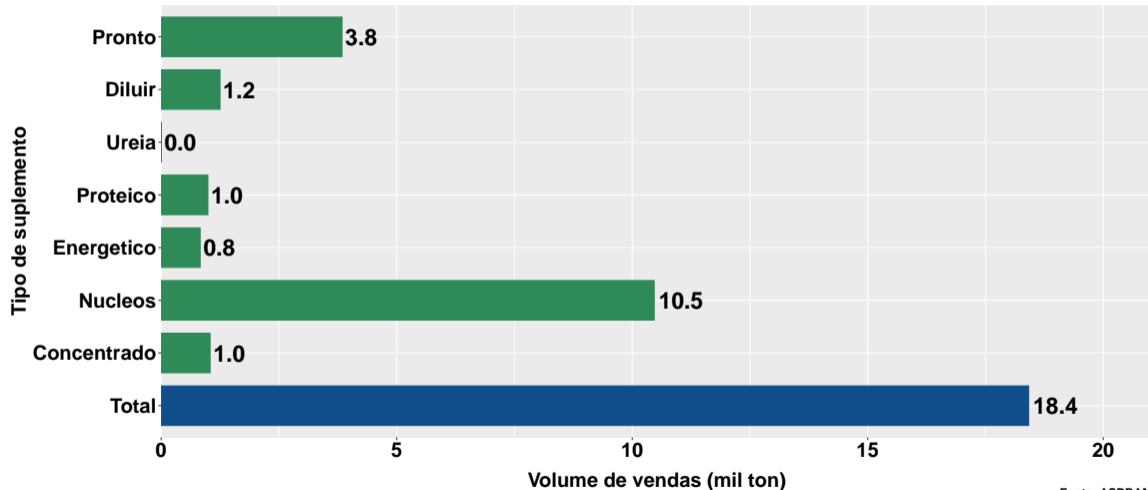
Fonte: ASBRAM

Part. suplemento no volume total mensal - pecuária corte



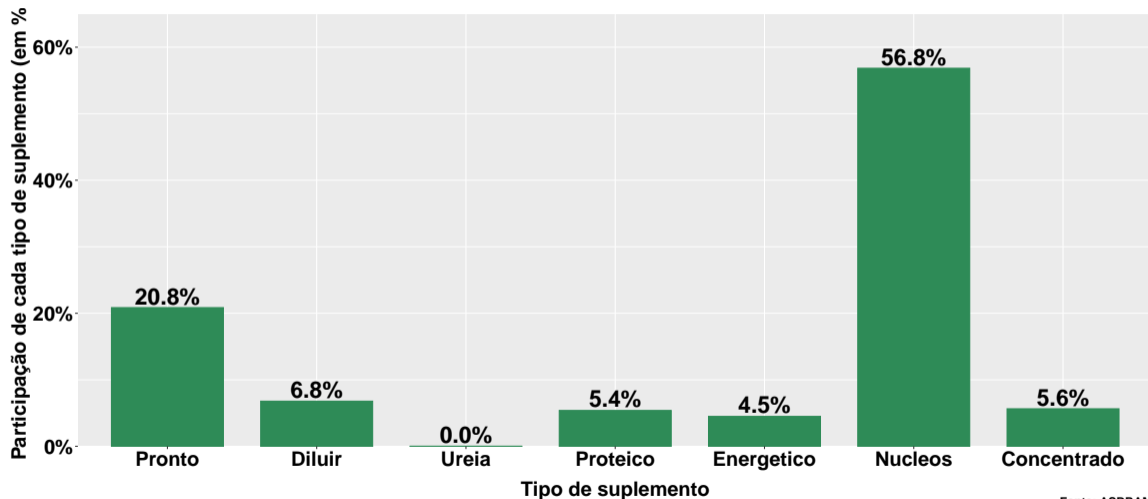
Fonte: ASBRAM

Volume de vendas no mês - pecuária leite



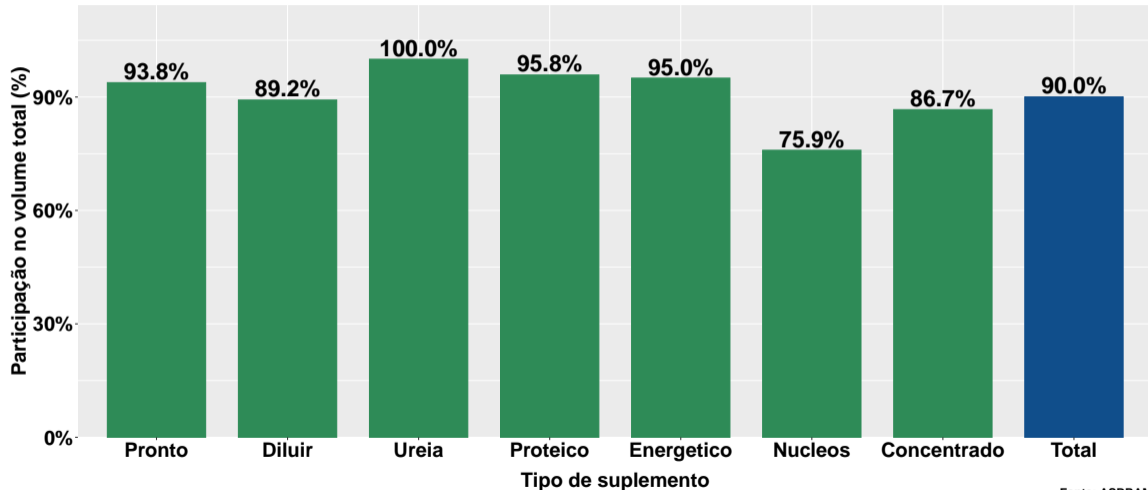
Fonte: ASBRAM

Part. suplemento no volume total mensal - pecuária leite



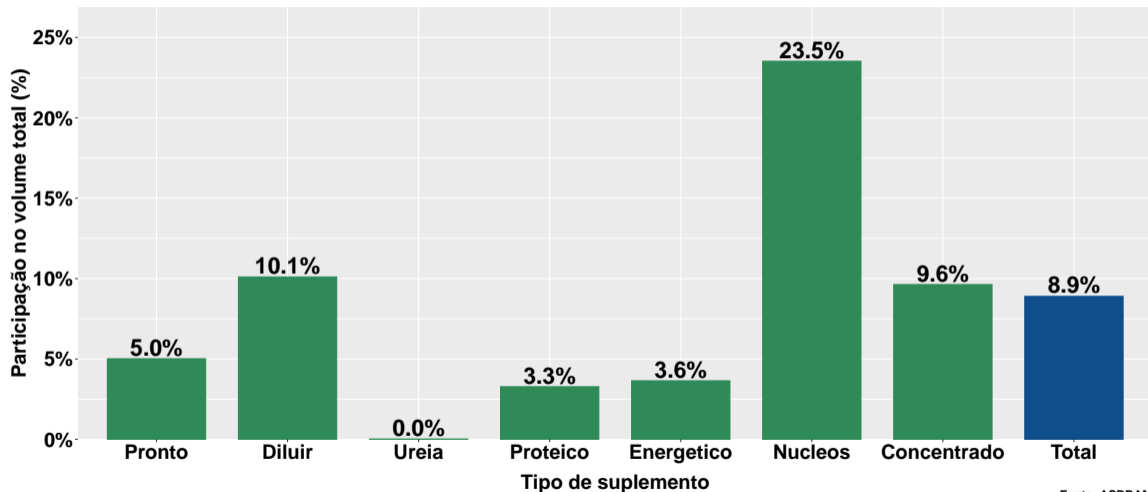
Fonte: ASBRAM

Part. pecuária corte no volume total - no mês



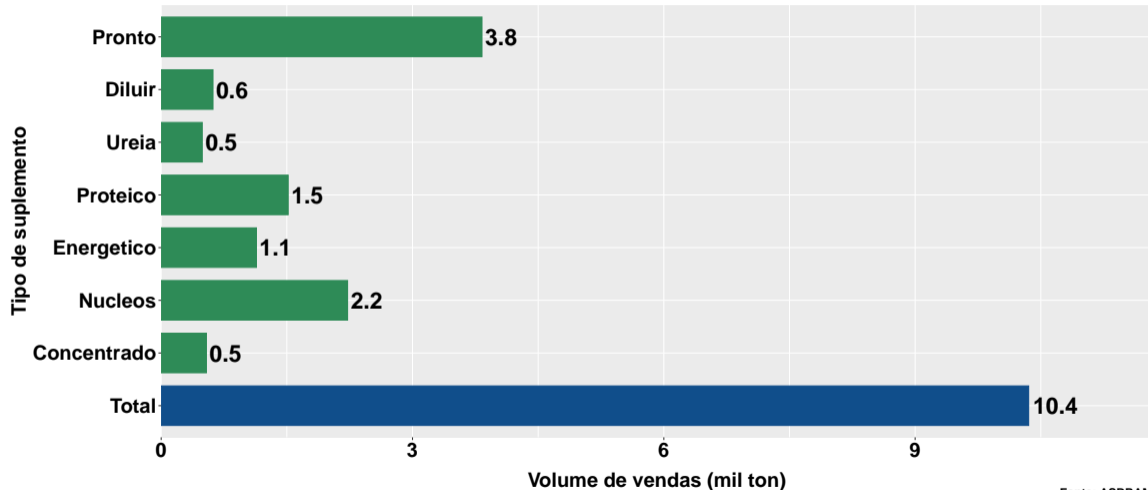
Fonte: ASBRAM

Part. pecuária leite no volume total - no mês



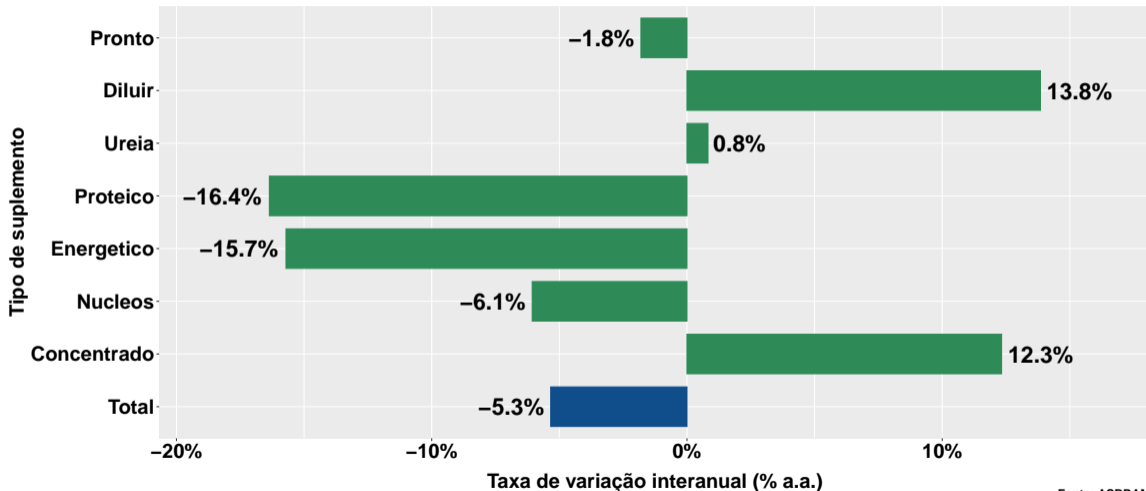
Fonte: ASBRAM

Volume de vendas no mês por dia útil



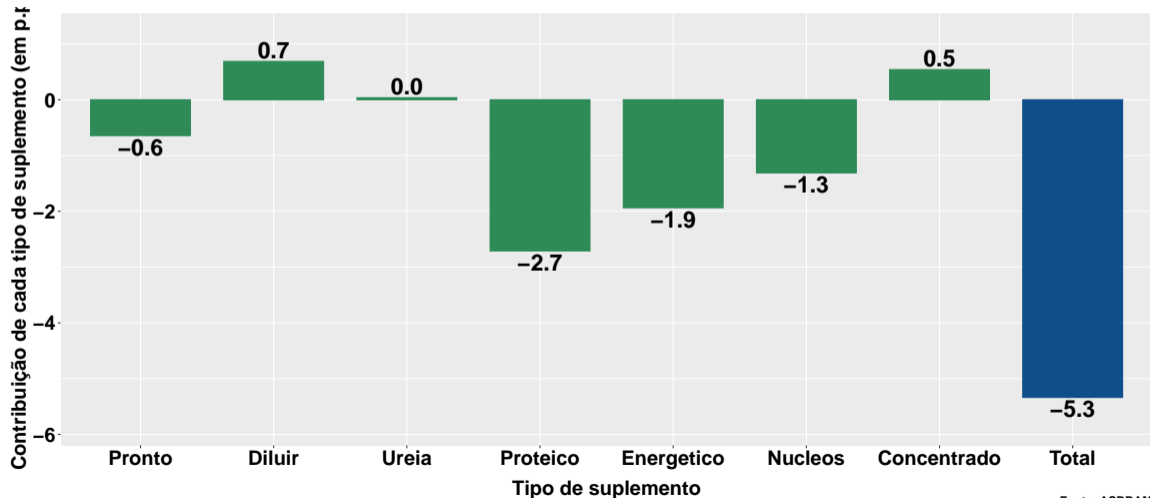
Fonte: ASBRAM

Variação interanual do volume de vendas por dia útil

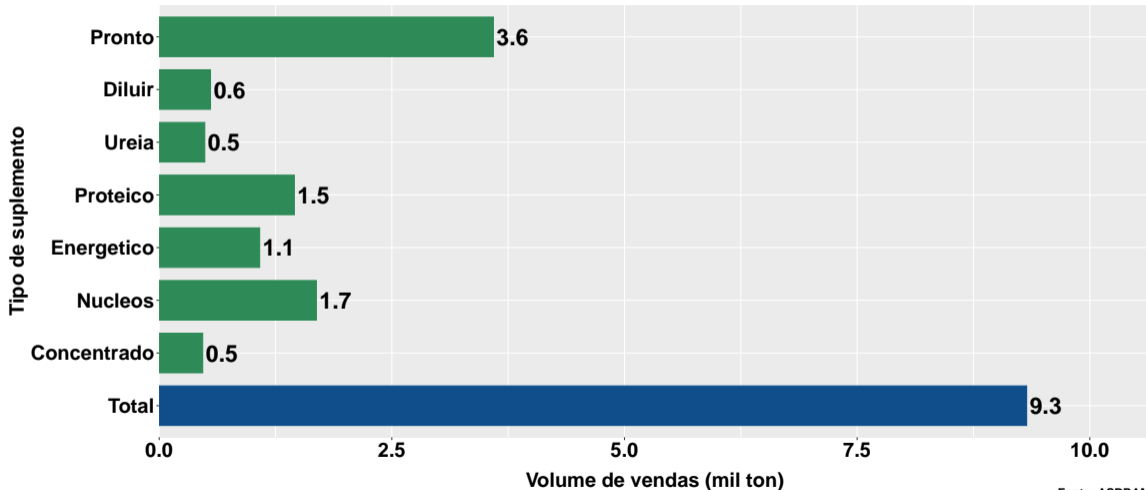


Fonte: ASBRAM

Contribuição de cada suplemento para variação interanual do volume de vendas por dia útil

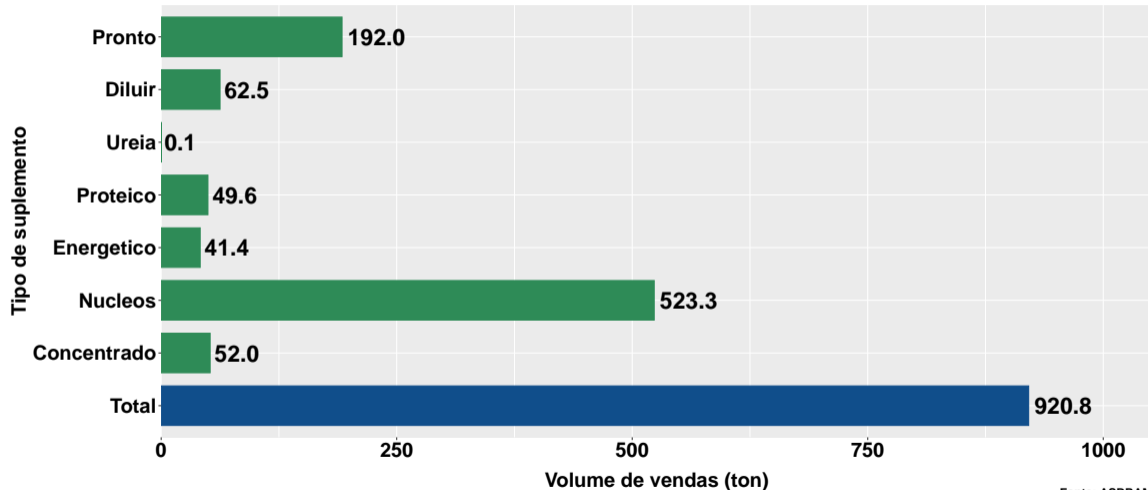


Volume de vendas dia útil - pecuária corte



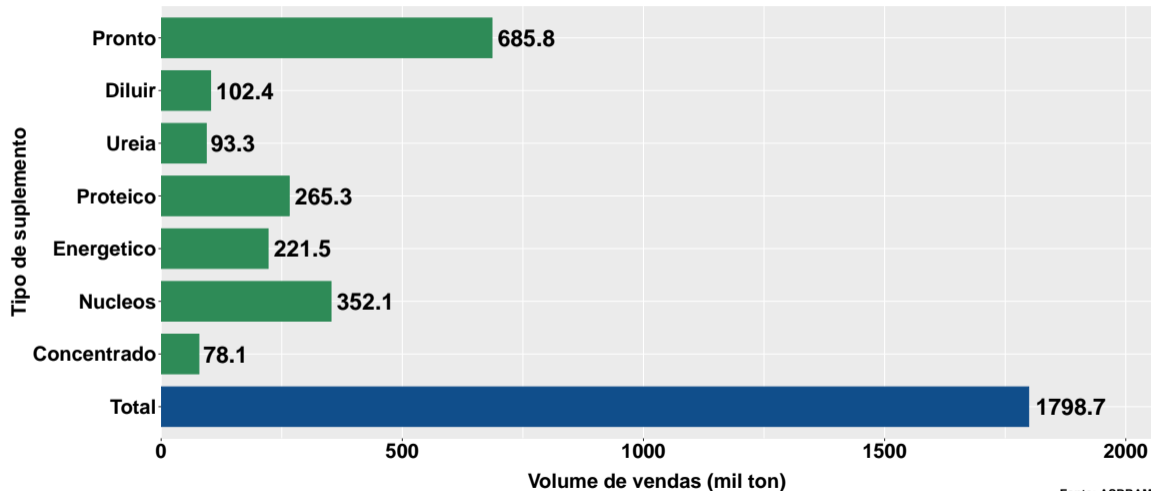
Fonte: ASBRAM

Volume de vendas dia útil - pecuária leite



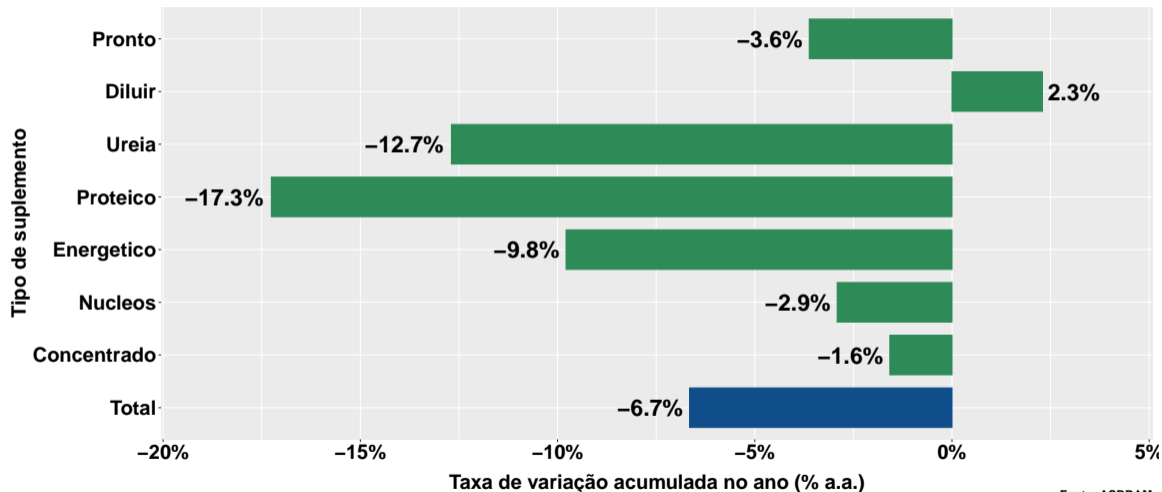
Fonte: ASBRAM

Volume de vendas acumulado no ano



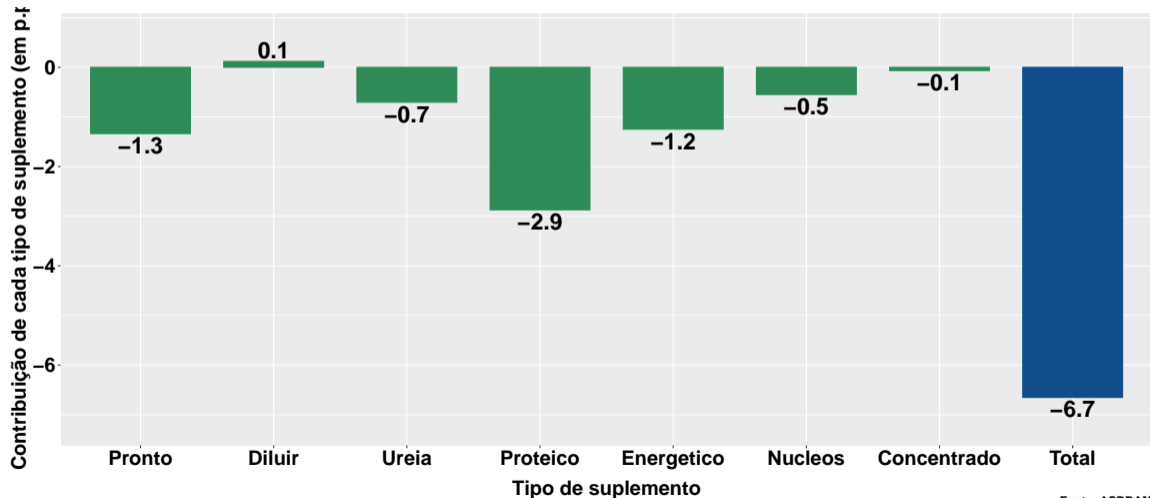
Fonte: ASBRAM

Variação do volume de vendas acumulado no ano

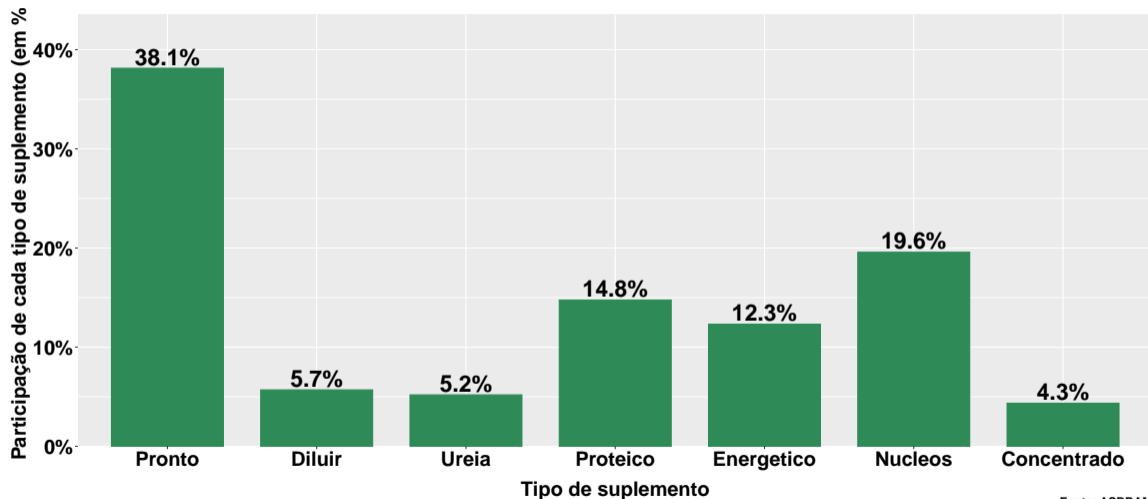


Fonte: ASBRAM

Contribuição de cada suplemento para variação do volume de vendas acumulado no ano

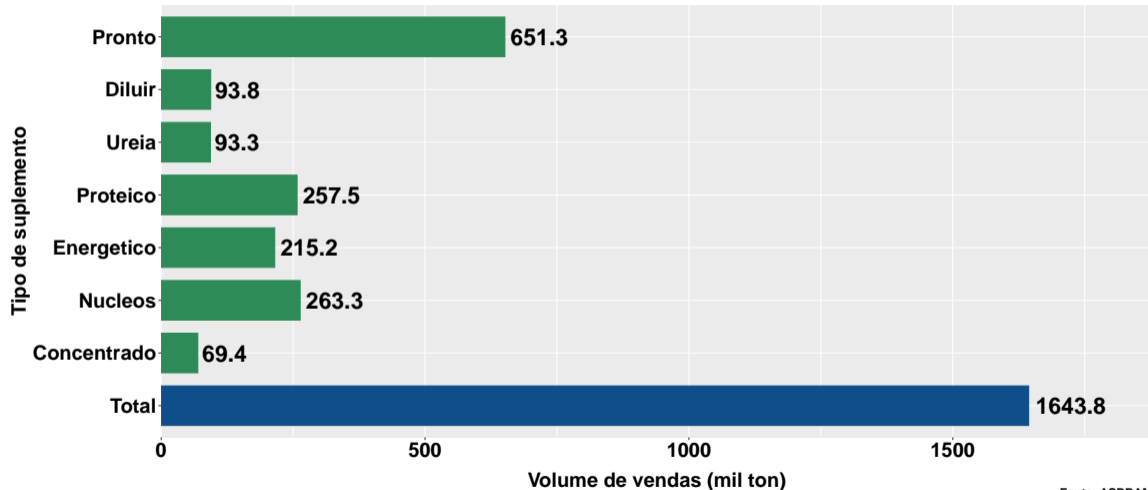


Part. de cada suplemento no volume total de vendas no ano



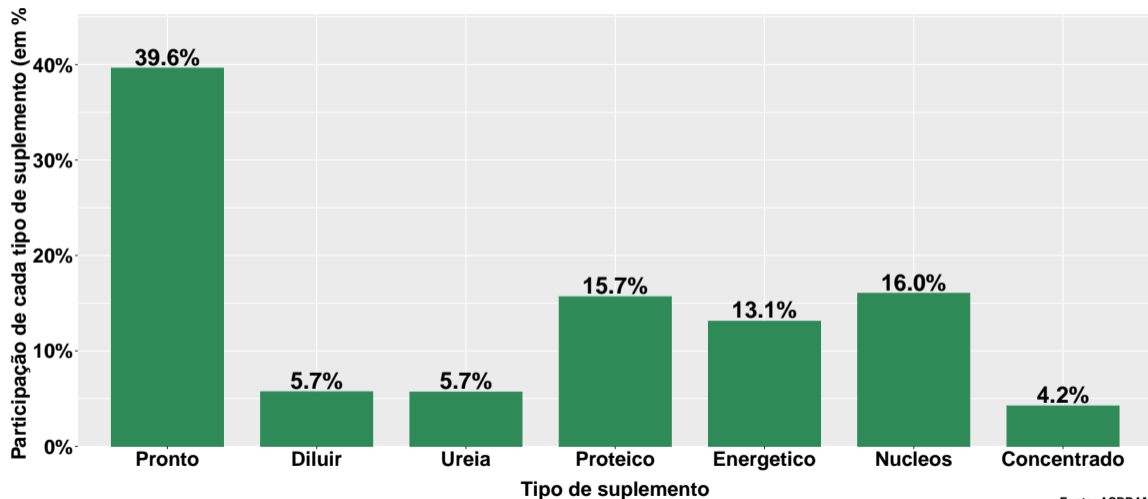
Fonte: ASBRAM

Volume acumulado no ano - pecuária corte



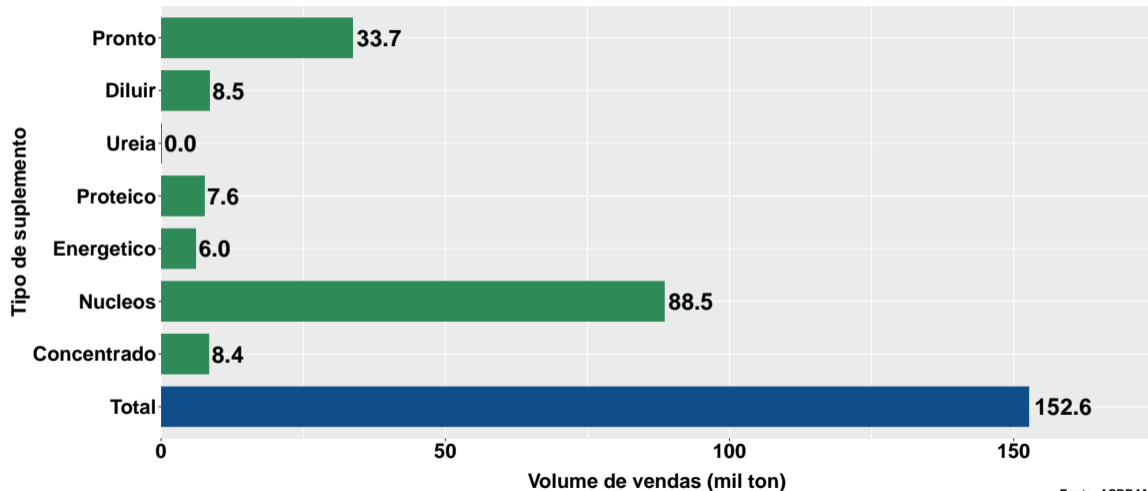
Fonte: ASBRAM

Part. suplemento no volume total no ano - pecuária corte



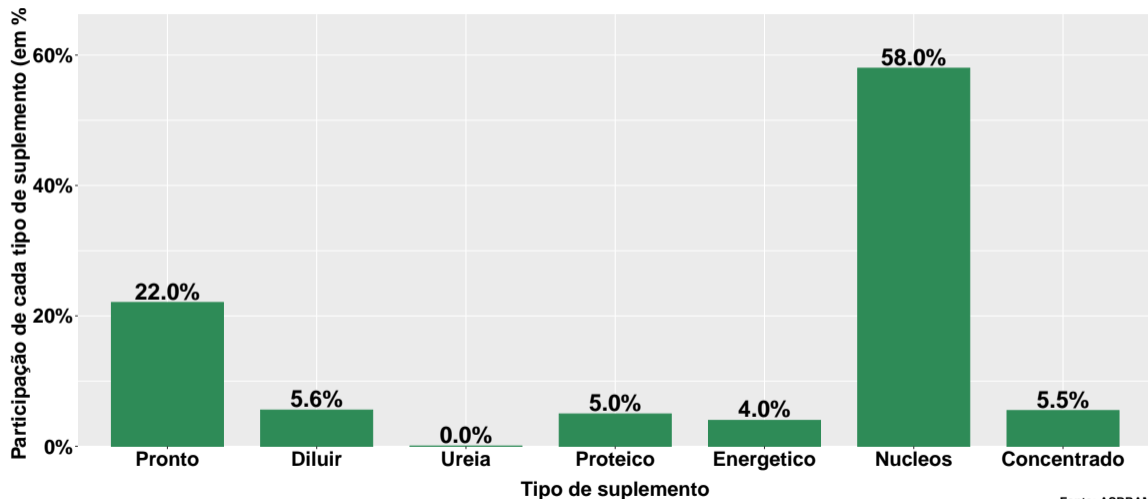
Fonte: ASBRAM

Volume acumulado no ano - pecuária leite



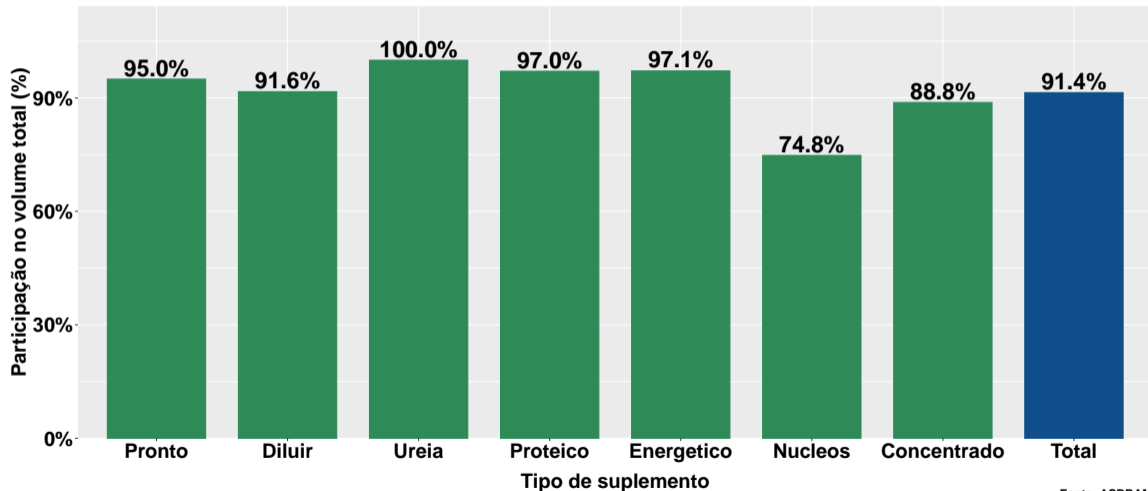
Fonte: ASBRAM

Part. suplemento no volume total no ano - pecuária leite



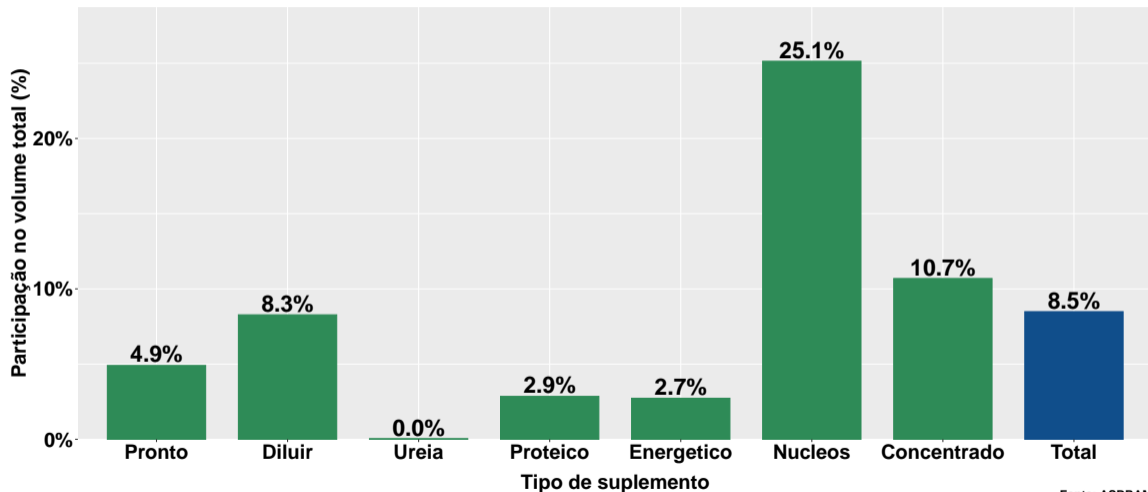
Fonte: ASBRAM

Part. pecuária corte no volume total - no ano



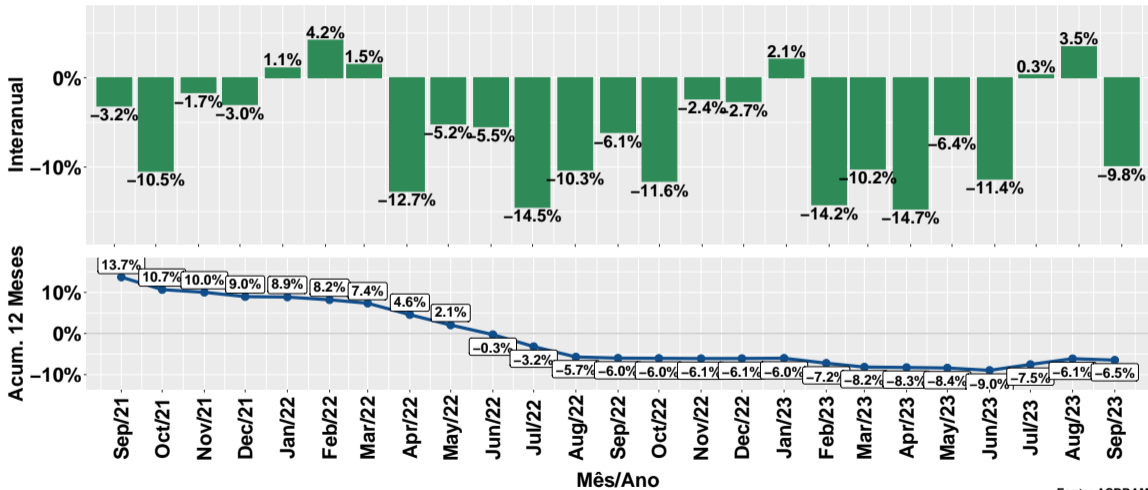
Fonte: ASBRAM

Part. pecuária leite no volume total - no ano



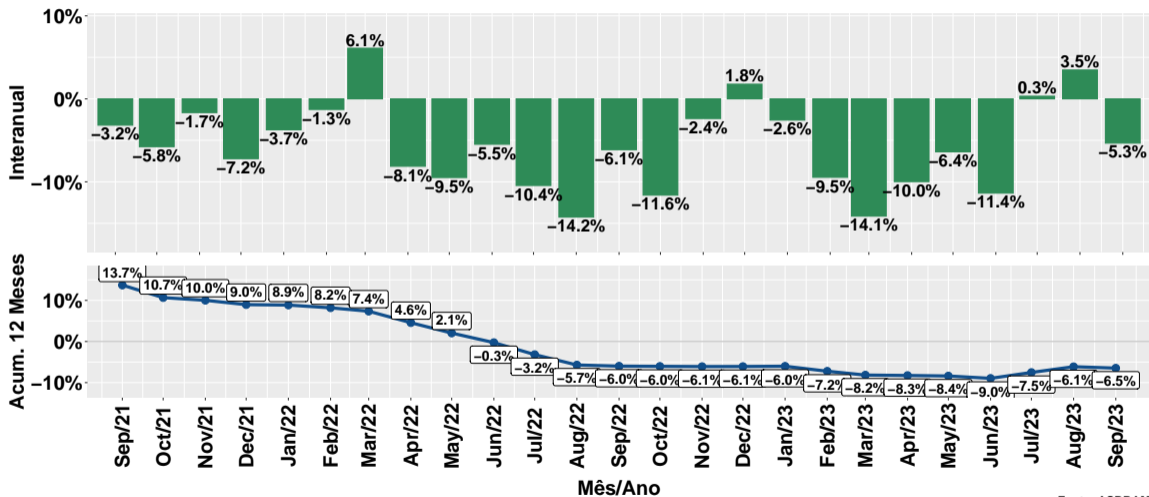
Fonte: ASBRAM

Evolução do volume total de vendas



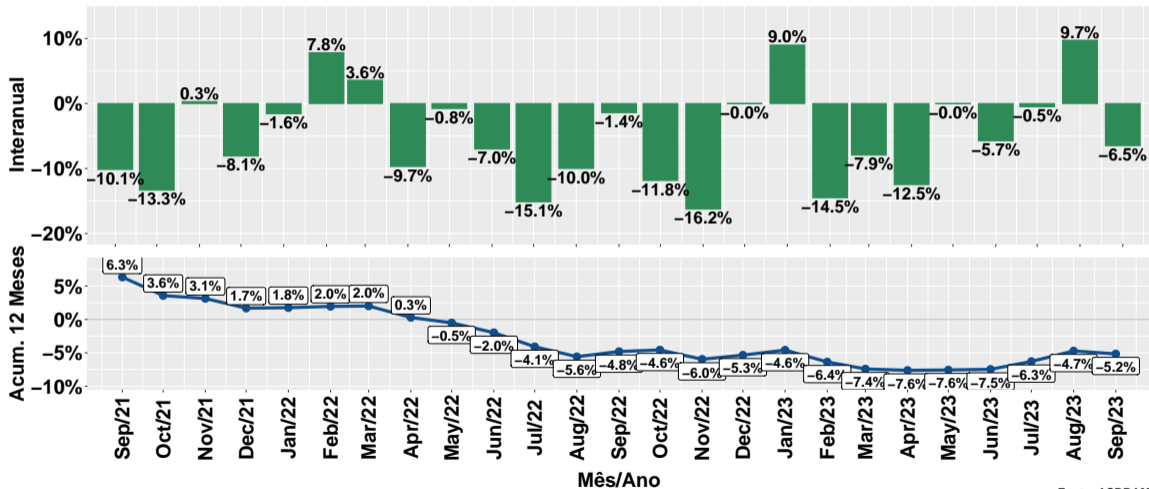
Fonte: ASBRAM

Evolução do volume total de vendas por dia útil



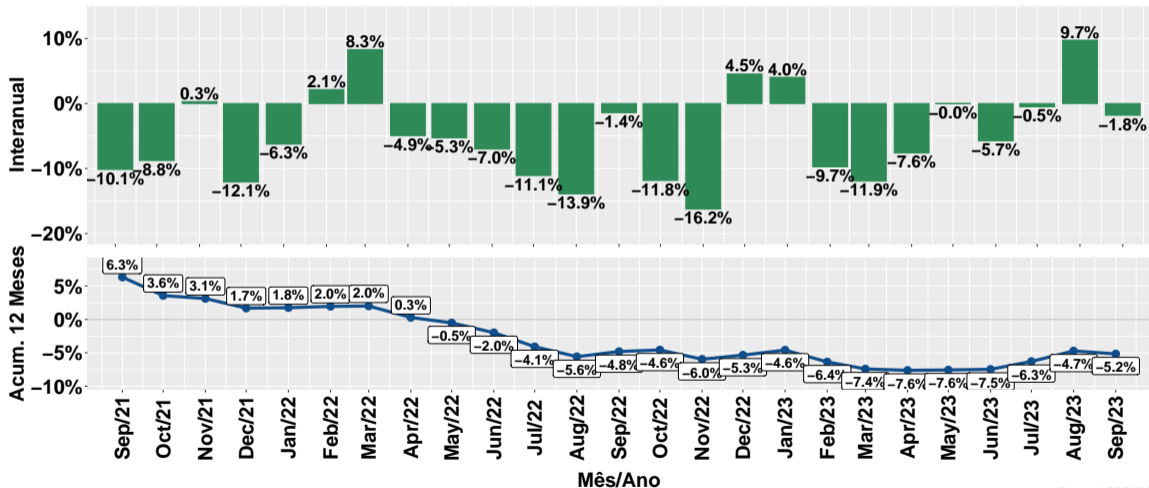
Fonte: ASBRAM

Evolução do volume de vendas: Pronto para uso



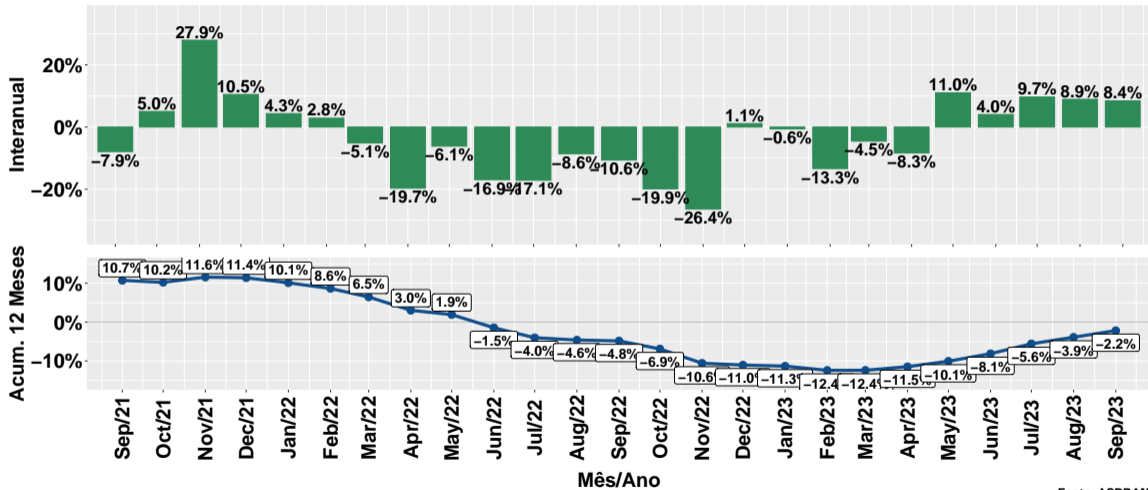
Fonte: ASBRAM

Evolução do volume de vendas por dia útil: Pronto para uso



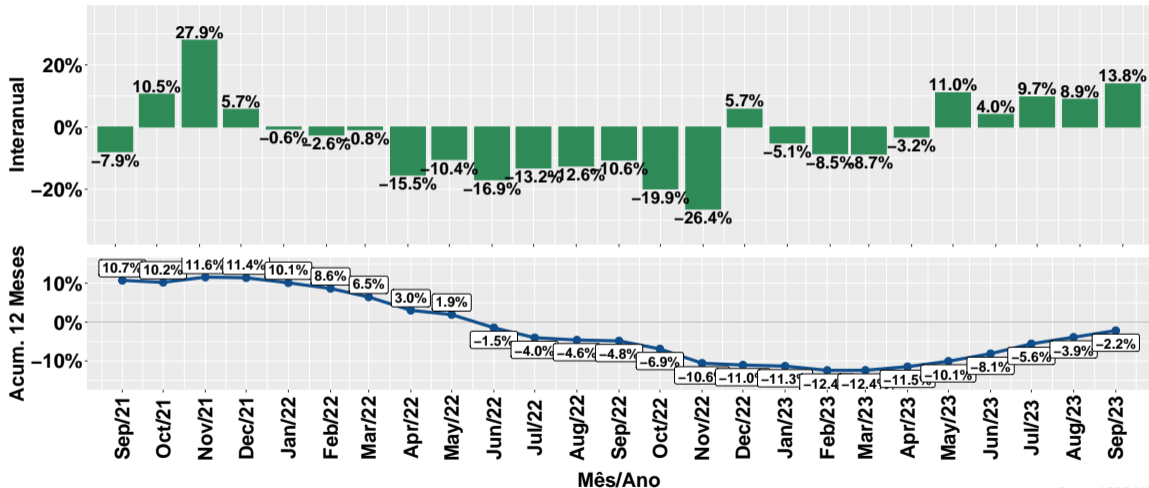
Fonte: ASBRAM

Evolução do volume de vendas: Para diluir



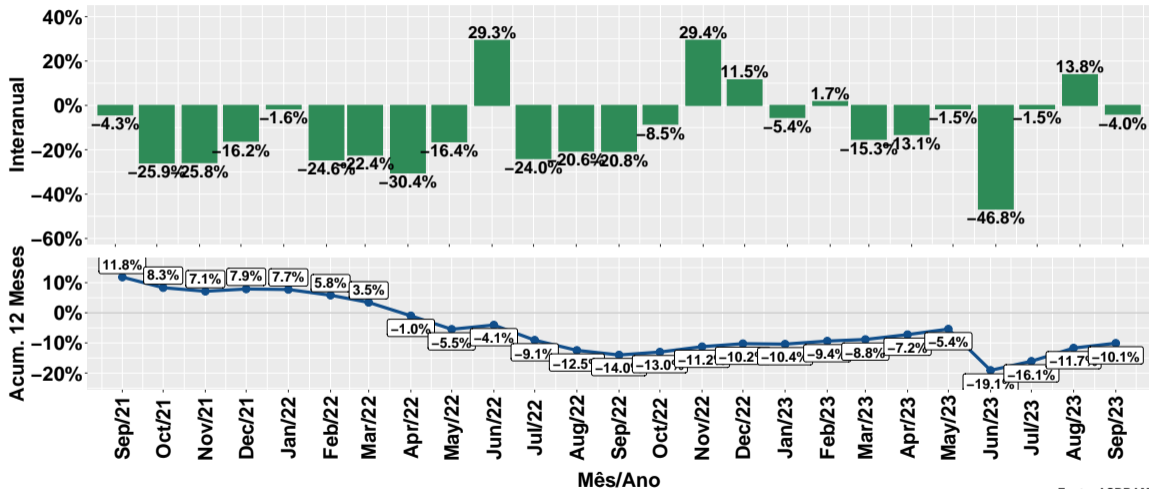
Fonte: ASBRAM

Evolução do volume de vendas por dia útil: Para diluir



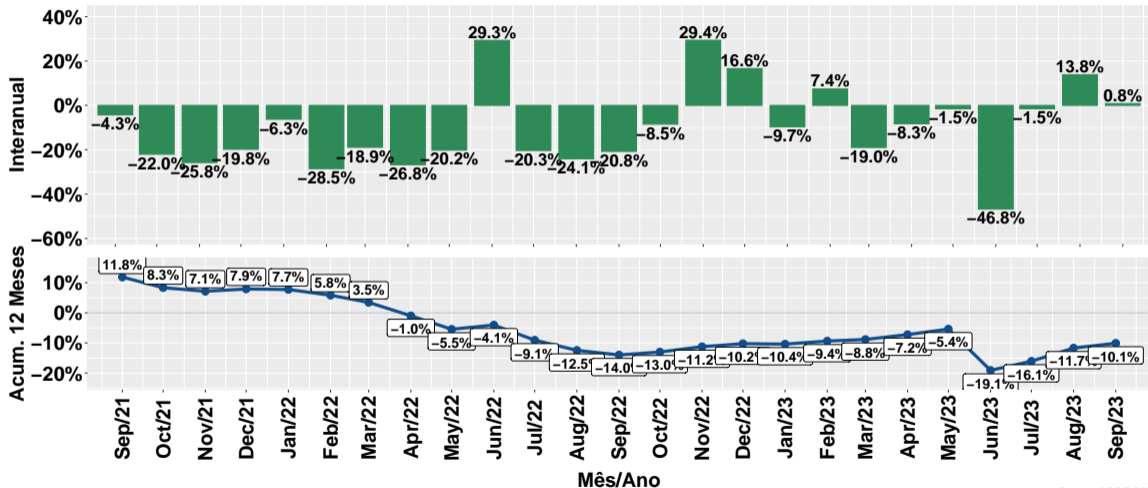
Fonte: ASBRAM

Evolução do volume de vendas: Ureia



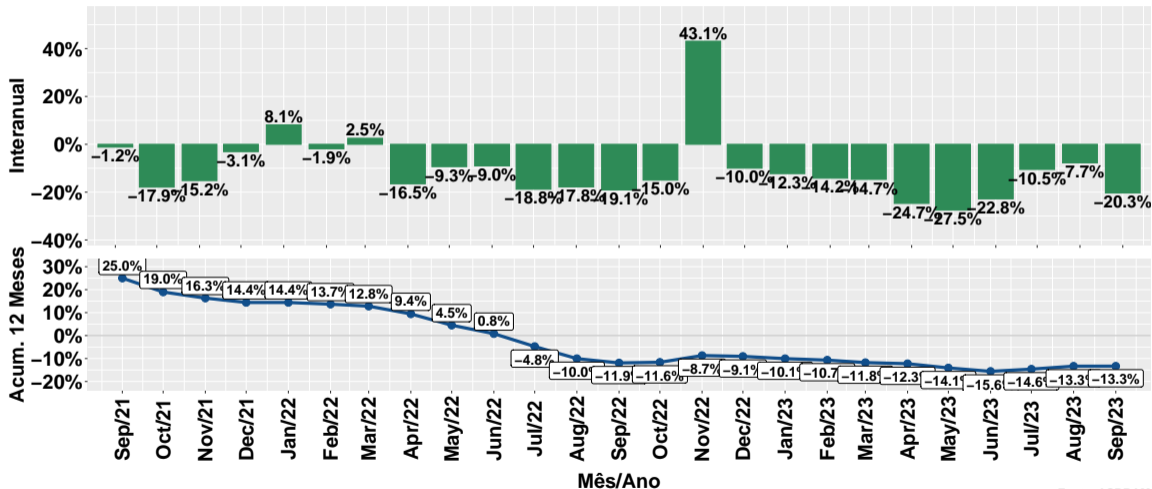
Fonte: ASBRAM

Evolução do volume de vendas por dia útil: Ureia



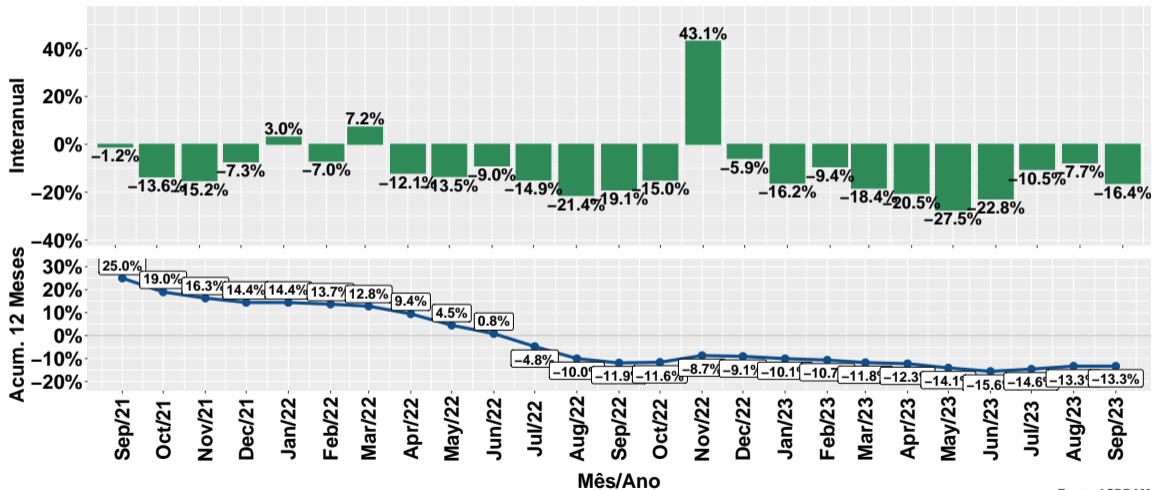
Fonte: ASBRAM

Evolução do volume de vendas: Proteico



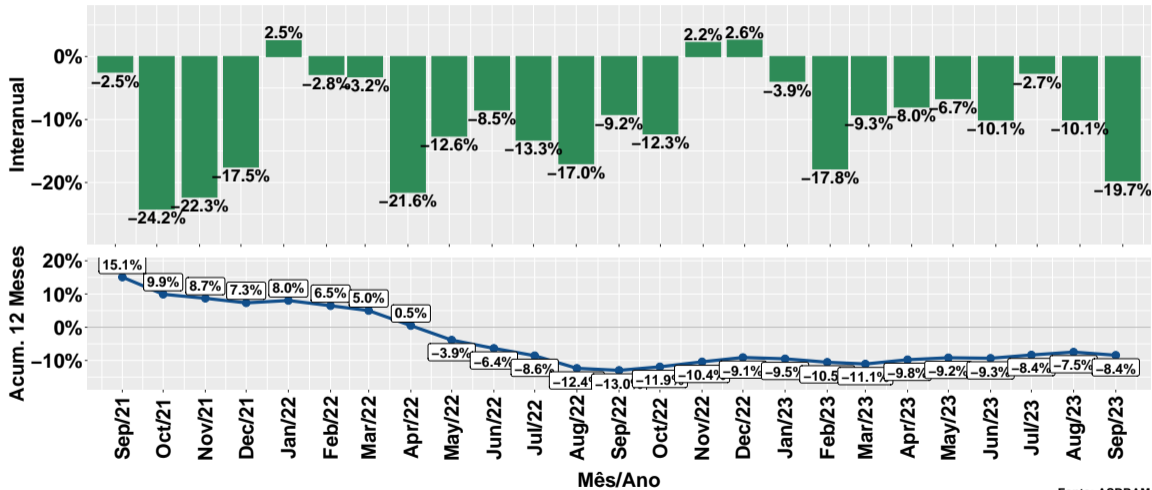
Fonte: ASBRAM

Evolução do volume de vendas por dia útil: Proteico



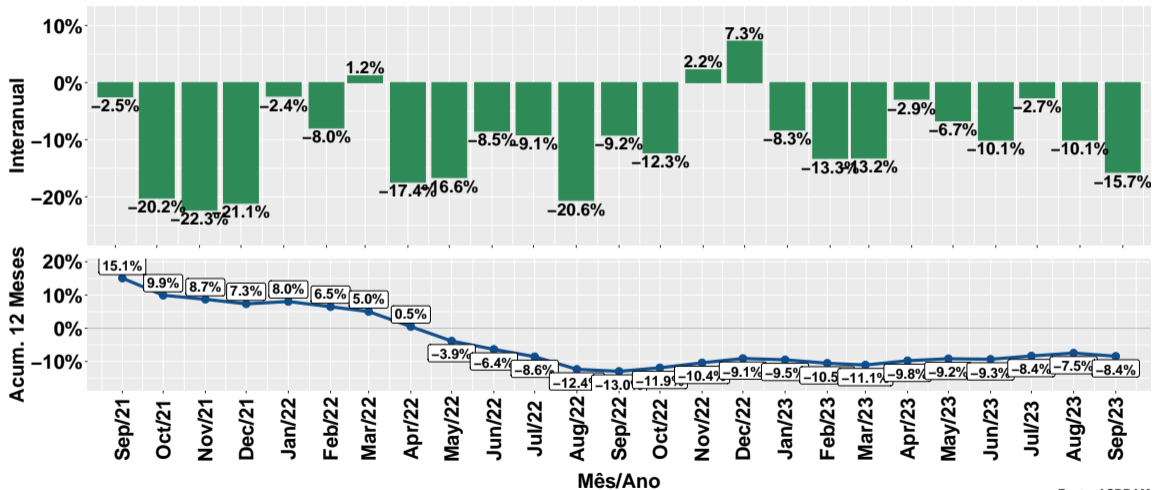
Fonte: ASBRAM

Evolução do volume de vendas: Prot. energético



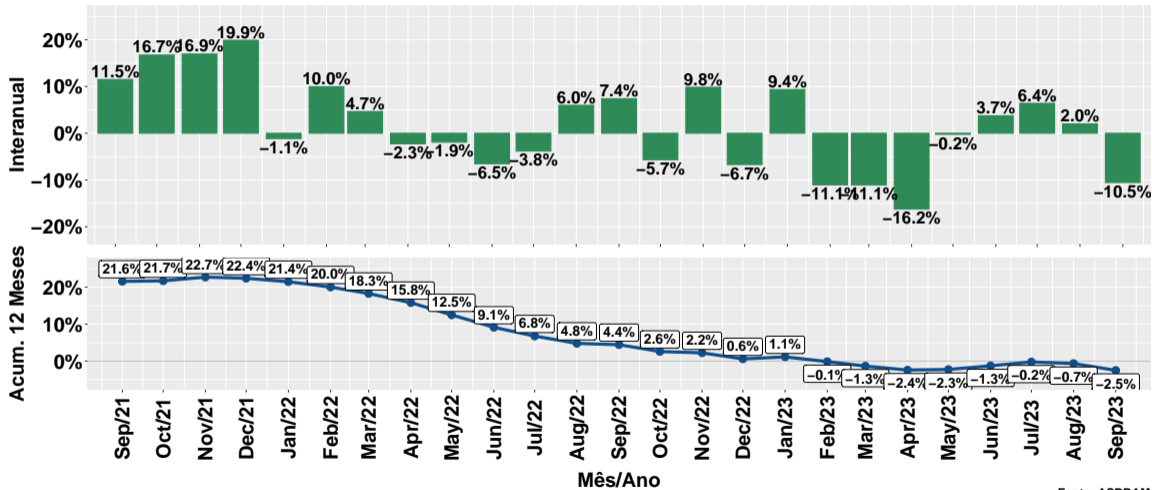
Fonte: ASBRAM

Evolução do volume de vendas por dia útil: Prot. energético



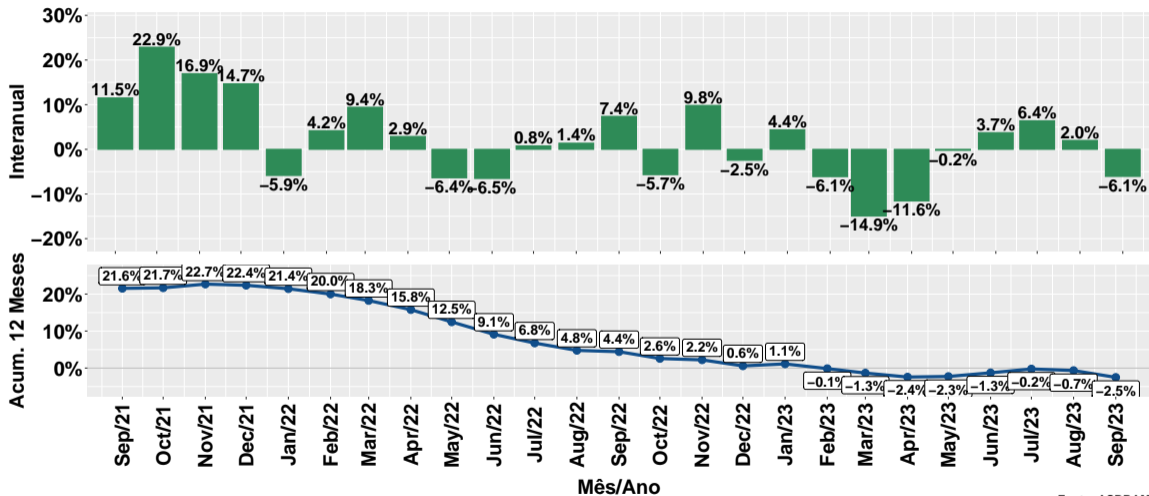
Fonte: ASBRAM

Evolução do volume de vendas: Núcleos



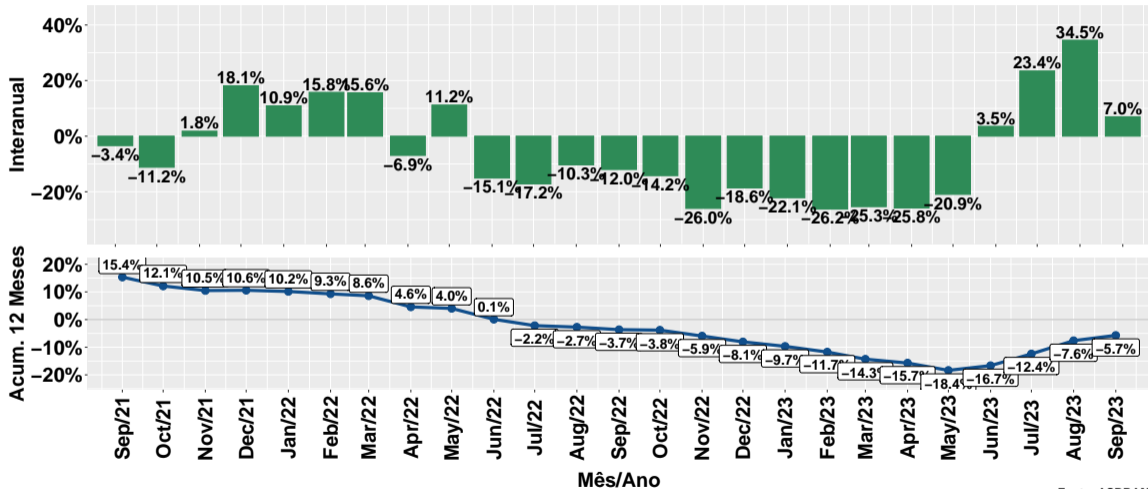
Fonte: ASBRAM

Evolução do volume de vendas por dia útil: Núcleos



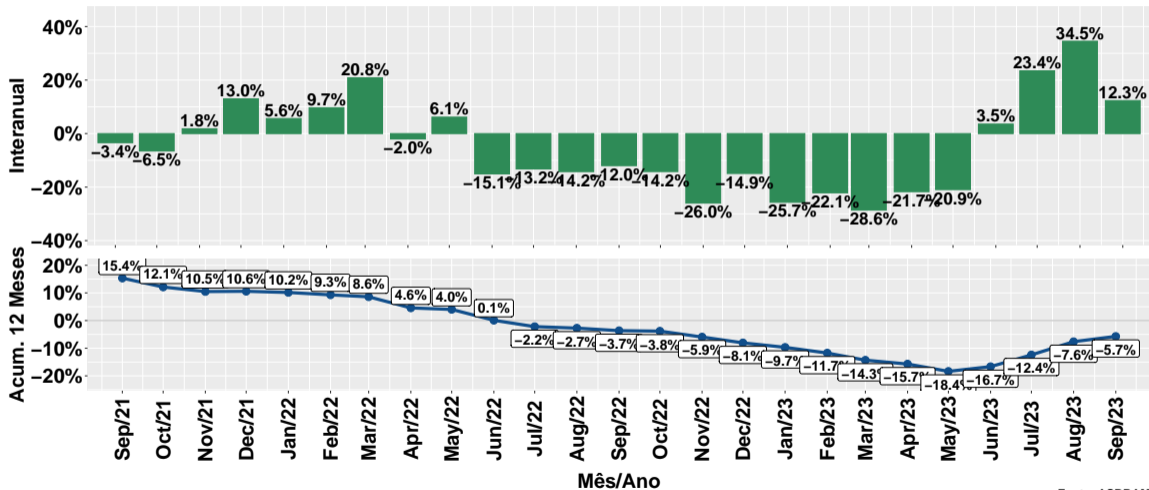
Fonte: ASBRAM

Evolução do volume de vendas: Concentrado



Fonte: ASBRAM

Evolução do volume de vendas por dia útil: Concentrado



Fonte: ASBRAM

Síntese de September/2023 (Parte 01)

	Vol. vendas ¹	Variação (%)			
		Mensal ²	Interanual ³	Acum. ano	12 meses
Pronto	76.6	-9.6%	-6.5%	-3.6%	-5.2%
Diluir	12.4	0.3%	8.4%	2.3%	-2.2%
Ureia	9.8	-22.2%	-4.0%	-12.7%	-10.1%
Proteico	30.3	-18.6%	-20.3%	-17.3%	-13.3%
Energetico	22.7	-6.5%	-19.7%	-9.8%	-8.4%
Nucleos	44.5	-13.7%	-10.5%	-2.9%	-2.5%
Concentrado	10.8	-23.7%	7.0%	-1.6%	-5.7%
Total	207.1	-10.5%	-9.8%	-6.7%	-6.5%

Note: Fonte: ASBRAM

¹ Em mil toneladas ² Mês/Mês anterior com ajuste sazonal ³ Mês/Mesmo mês ano anterior

Síntese de September/2023 (Parte 02)

	Contribuição (em p.p.)			
	Mensal ²	Interanual ³	Acum. ano	12 meses
Pronto	-3.6	-2.3	-1.3	-2.0
Diluir	0.0	0.4	0.1	-0.1
Ureia	-1.1	-0.2	-0.7	-0.5
Proteico	-2.7	-3.4	-2.9	-2.1
Energetico	-0.7	-2.4	-1.2	-1.0
Nucleos	-2.9	-2.3	-0.5	-0.5
Concentrado	-1.2	0.3	-0.1	-0.2
Total	-10.5	-9.8	-6.7	-6.5

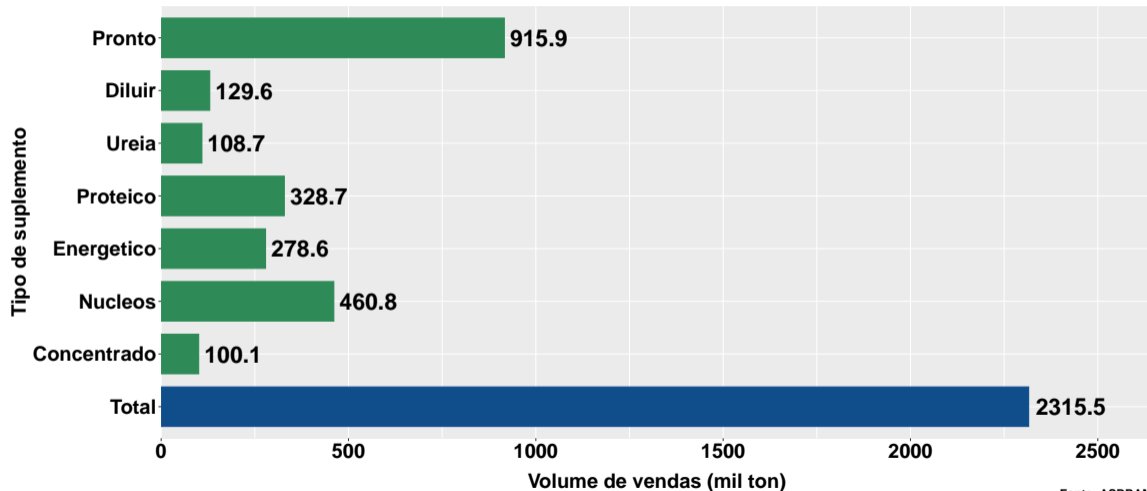
Note: Fonte: ASBRAM

¹ Em mil toneladas ² Mês/Mês anterior com ajuste sazonal ³ Mês/Mesmo mês ano anterior

Section 2

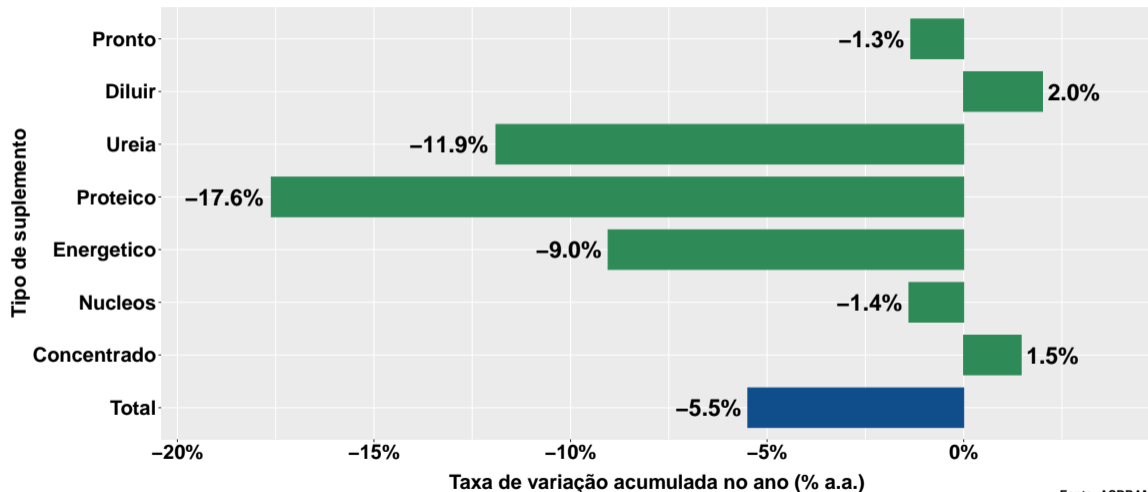
Projeções para o final de 2023

Cenário base para o volume de suplementos



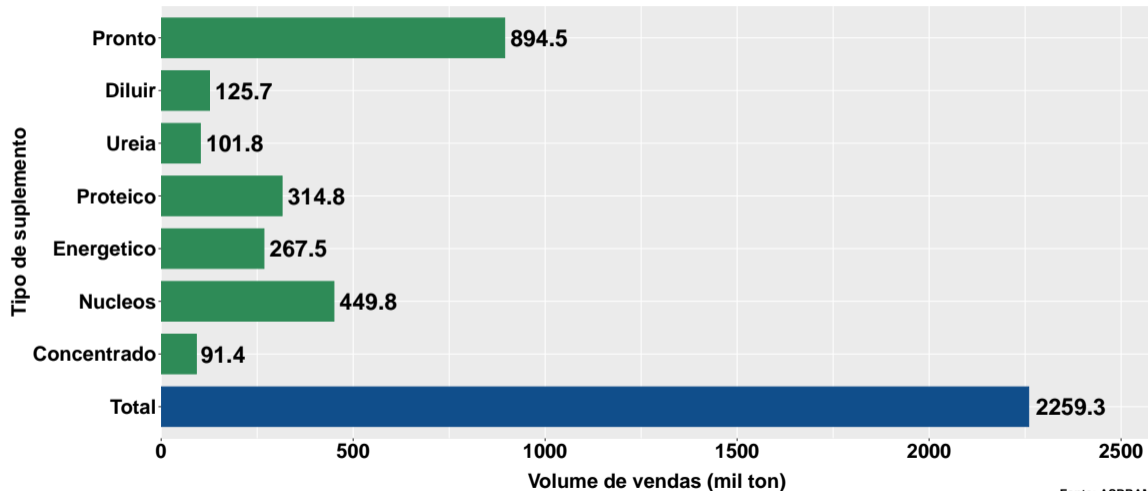
Fonte: ASBRAM

Cenário base para a var. do volume de suplementos



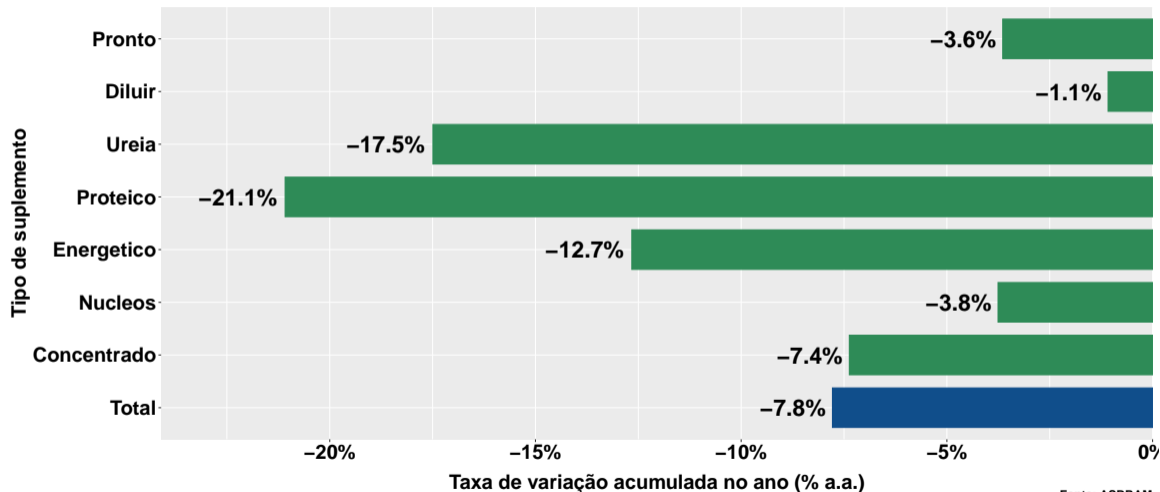
Fonte: ASBRAM

Cenário pessimista para o volume de suplementos



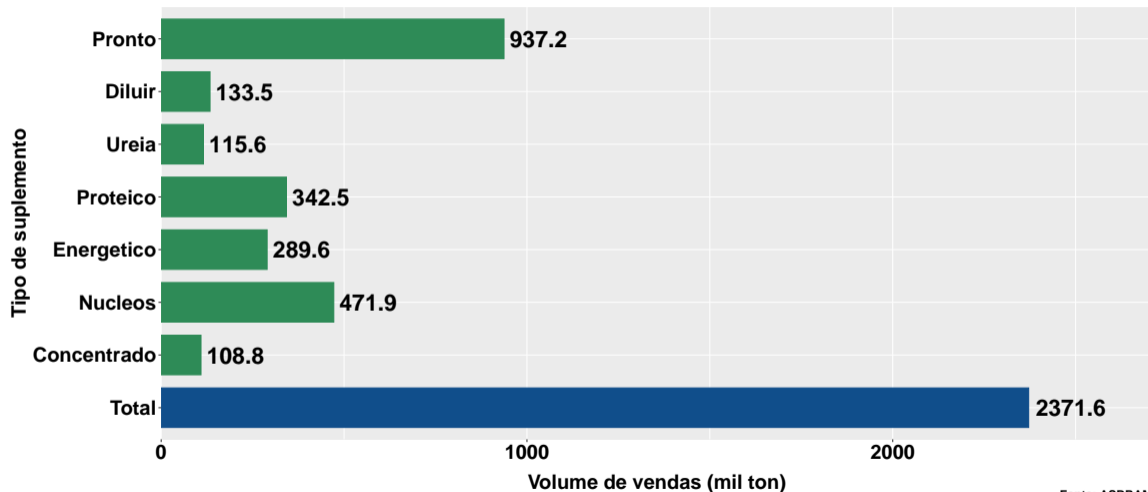
Fonte: ASBRAM

Cenário pessimista para a var. do volume de suplementos



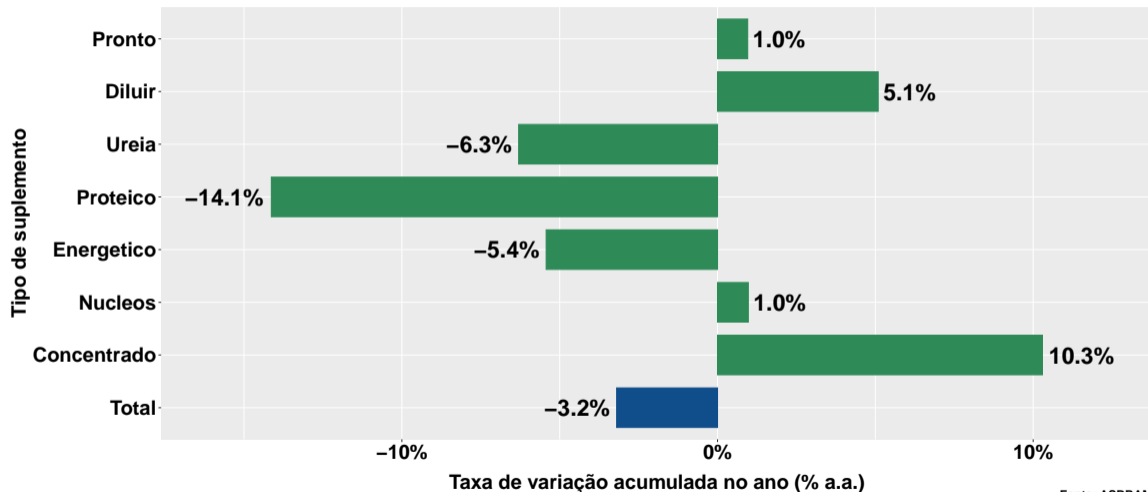
Fonte: ASBRAM

Cenário otimista para o volume de suplementos



Fonte: ASBRAM

Cenário otimista para a var. do volume de suplementos

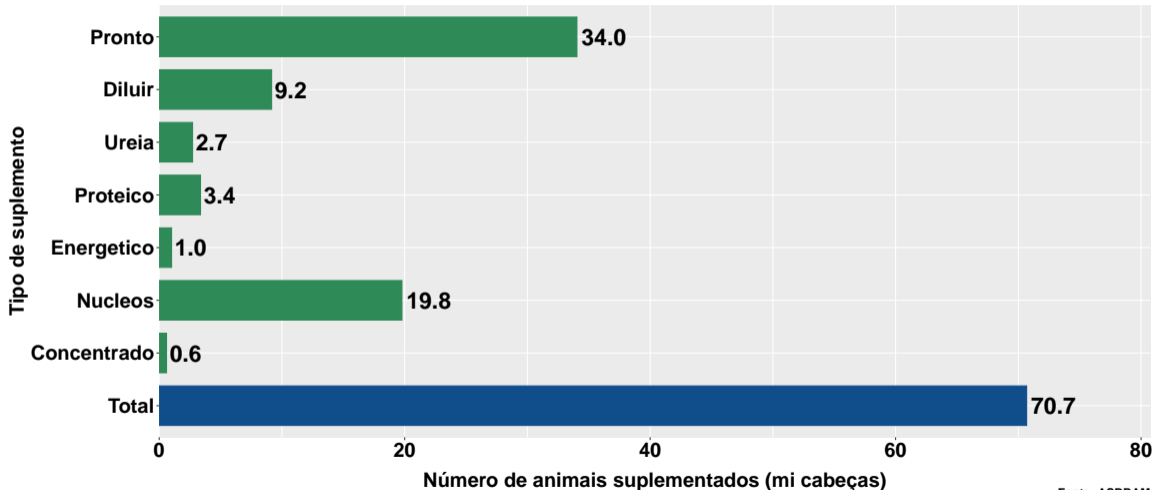


Fonte: ASBRAM

Section 3

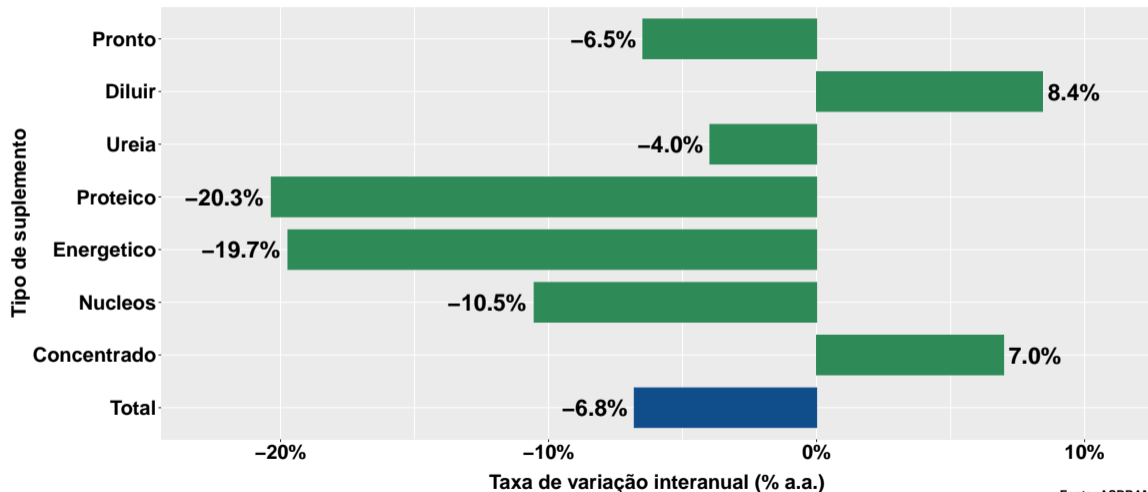
Número de animais suplementados no Brasil

Número de animais suplementados



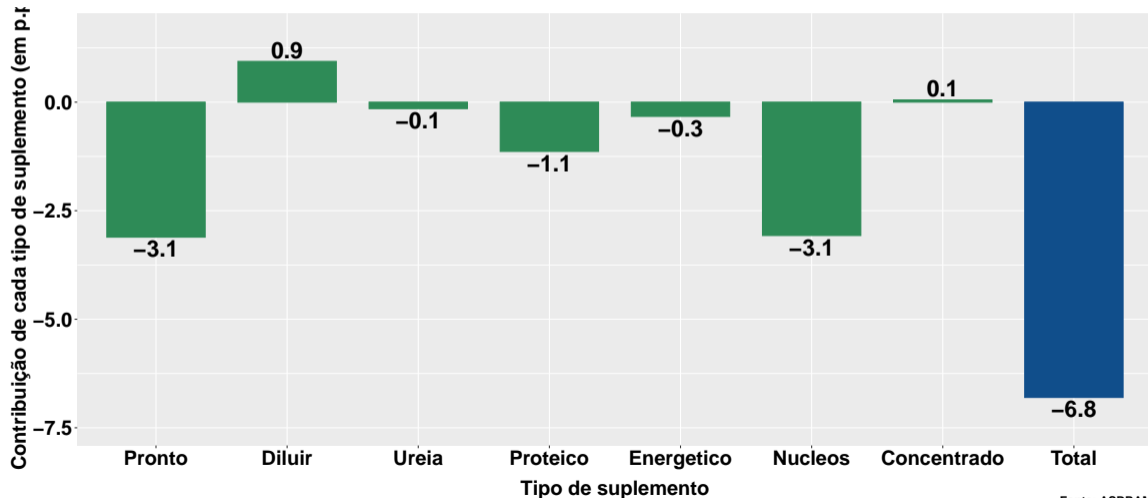
Fonte: ASBRAM

Var. interanual do num. de animais suplementados

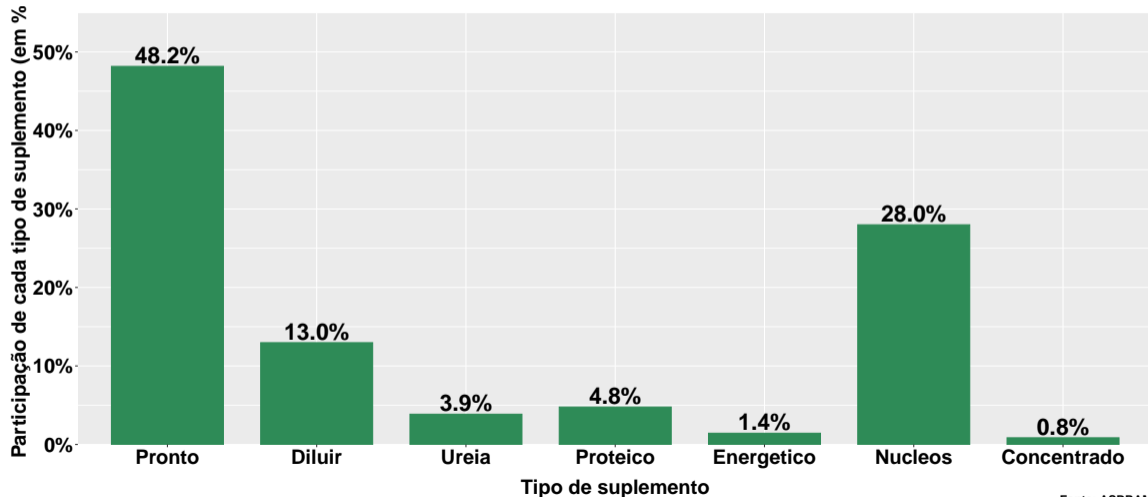


Fonte: ASBRAM

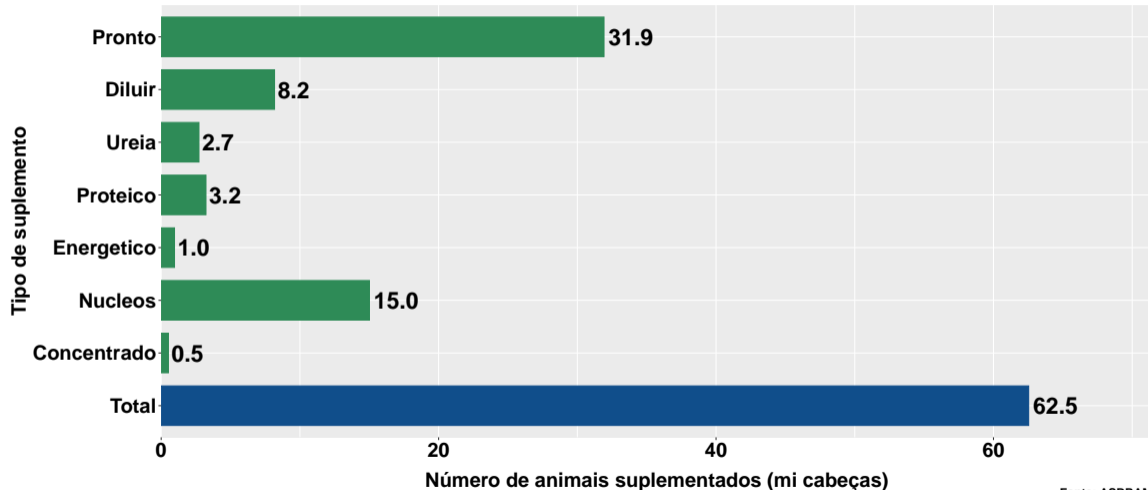
Contribuição de cada suplemento para variação interanual do número de animais suplementados



Participação de cada suplemento no número de animais suplementados no mês

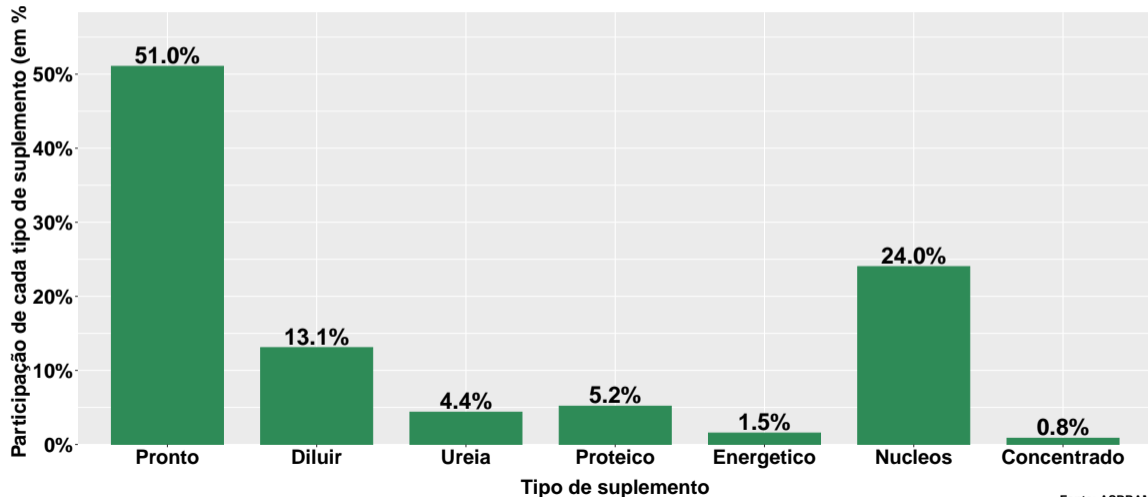


Número de animais suplementados - pecuária corte

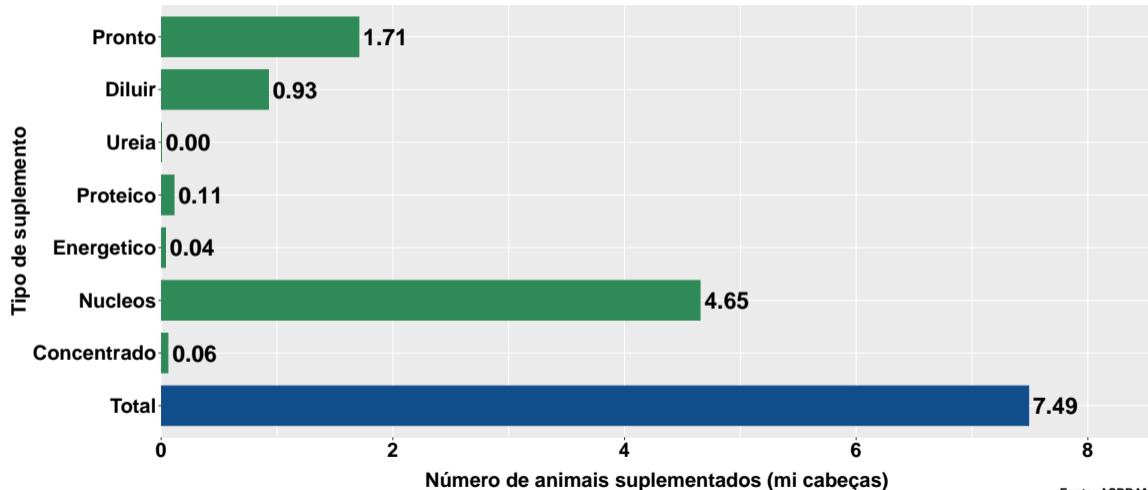


Fonte: ASBRAM

Part. suplemento no núm. animais suplementados no mês - pecuária corte

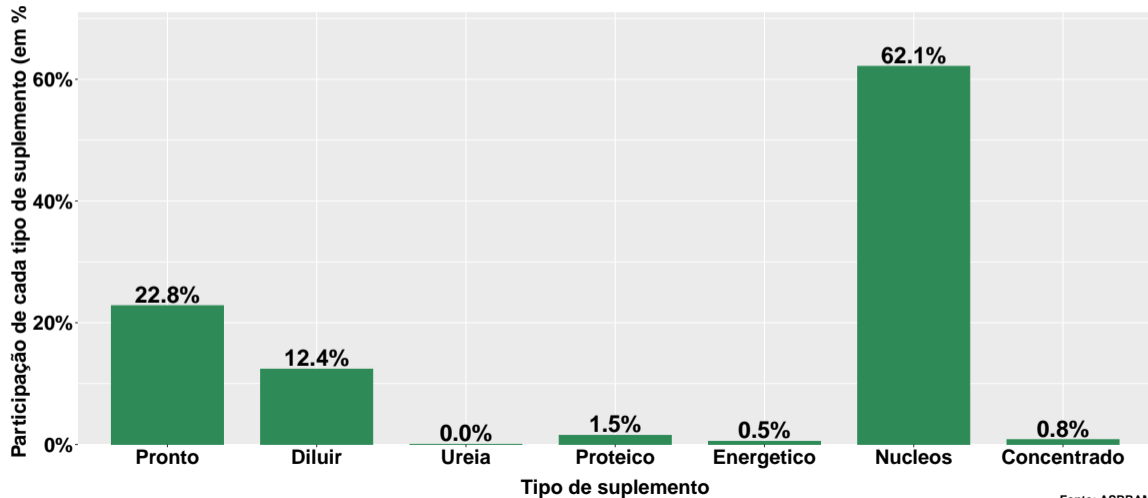


Número de animais suplementados - pecuária leite

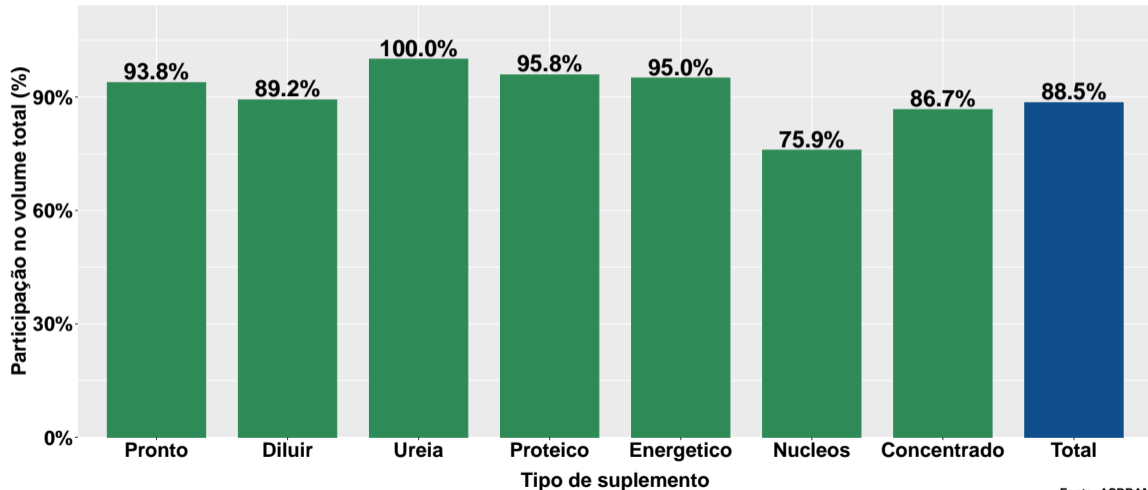


Fonte: ASBRAM

Part. suplemento no núm. animais suplementados no mês - pecuária leite

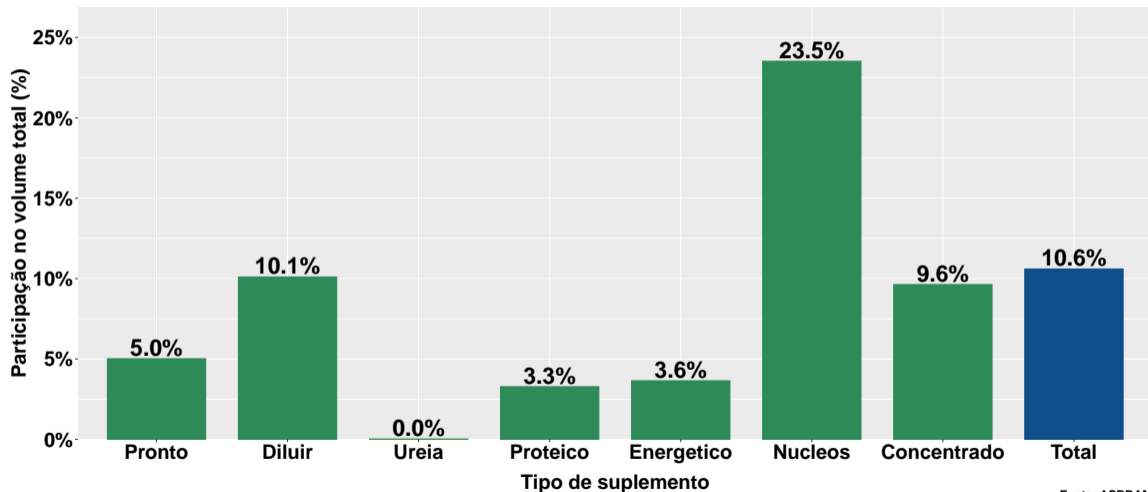


Part. pecuária corte no num. animais total - no mês



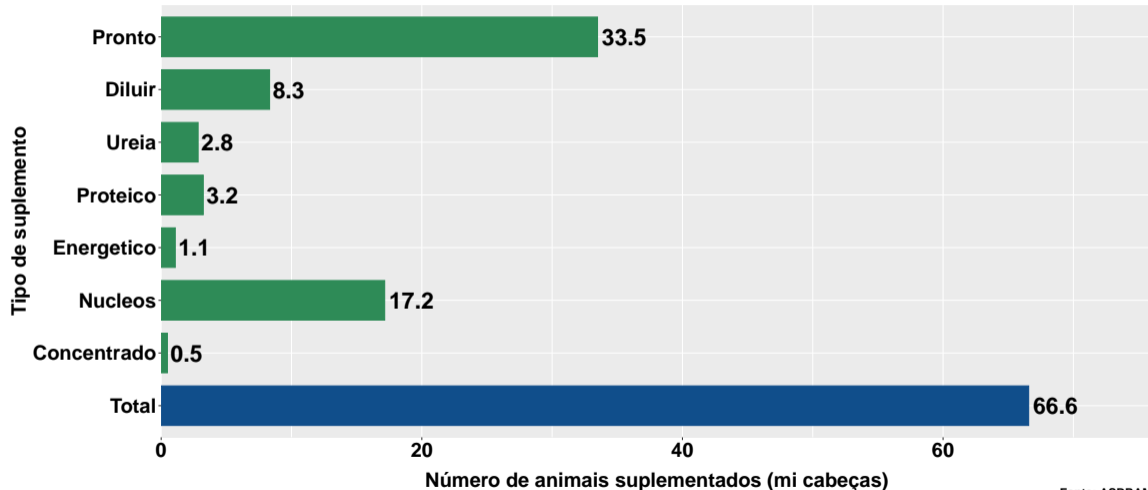
Fonte: ASBRAM

Part. pecuária leite no num. animais total - no mês



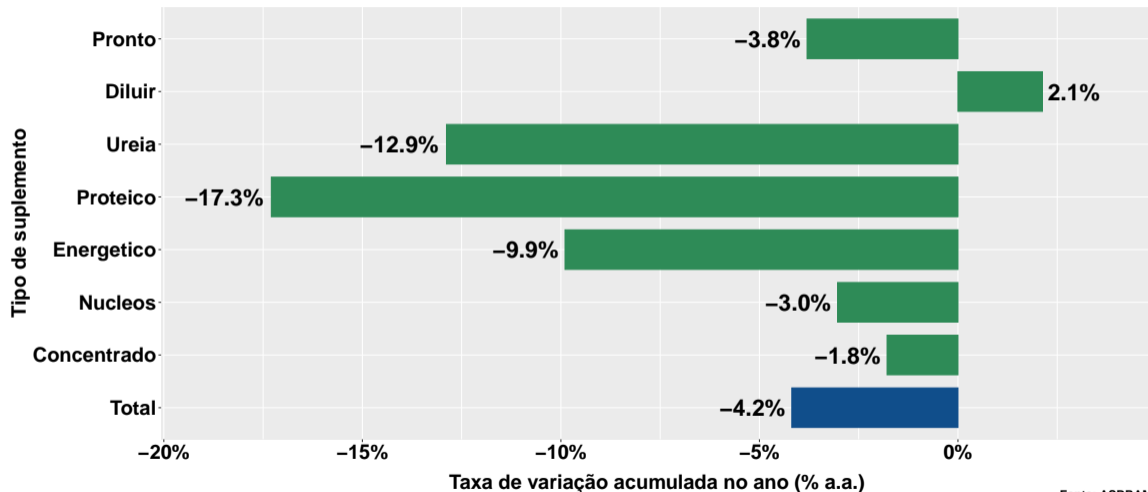
Fonte: ASBRAM

Número de animais suplementados no ano



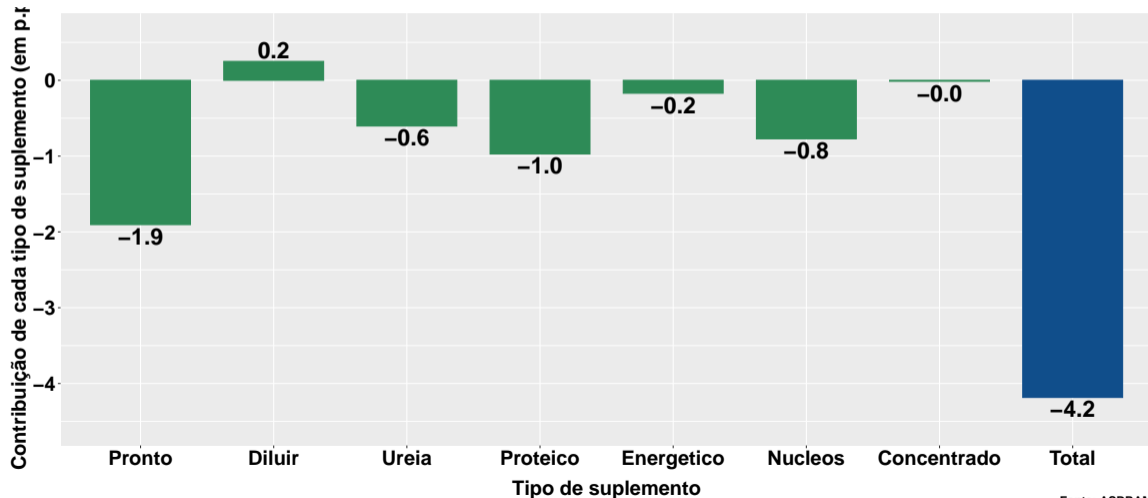
Fonte: ASBRAM

Variação do num. de animais suplementados no ano

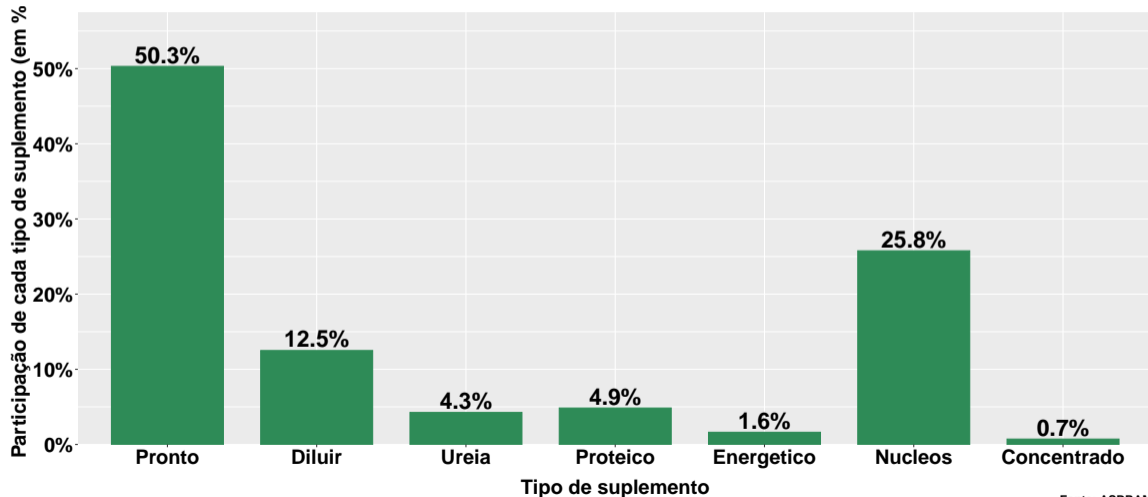


Fonte: ASBRAM

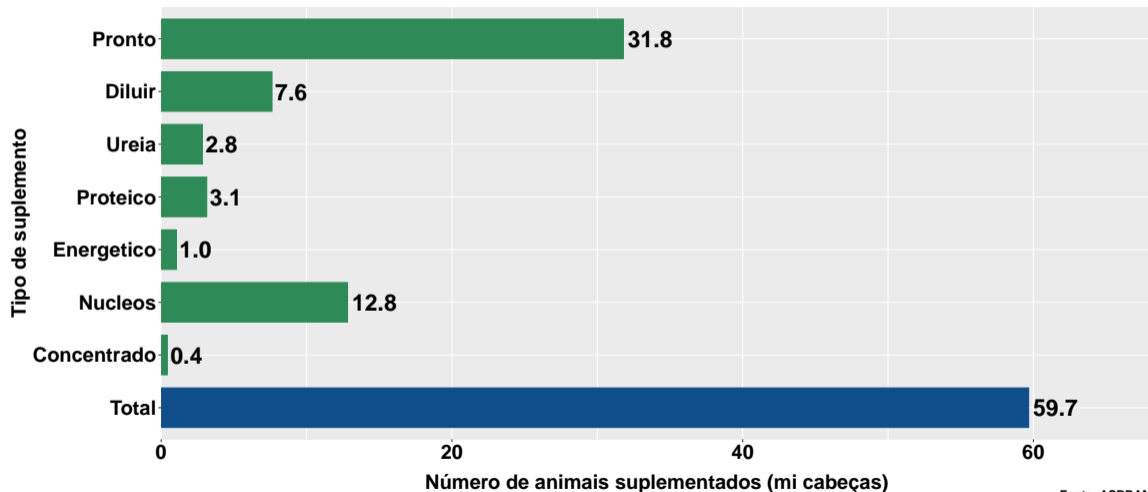
Contribuição de cada suplemento para variação do número de animais suplementados no ano



Participação de cada suplemento no número de animais suplementados no ano

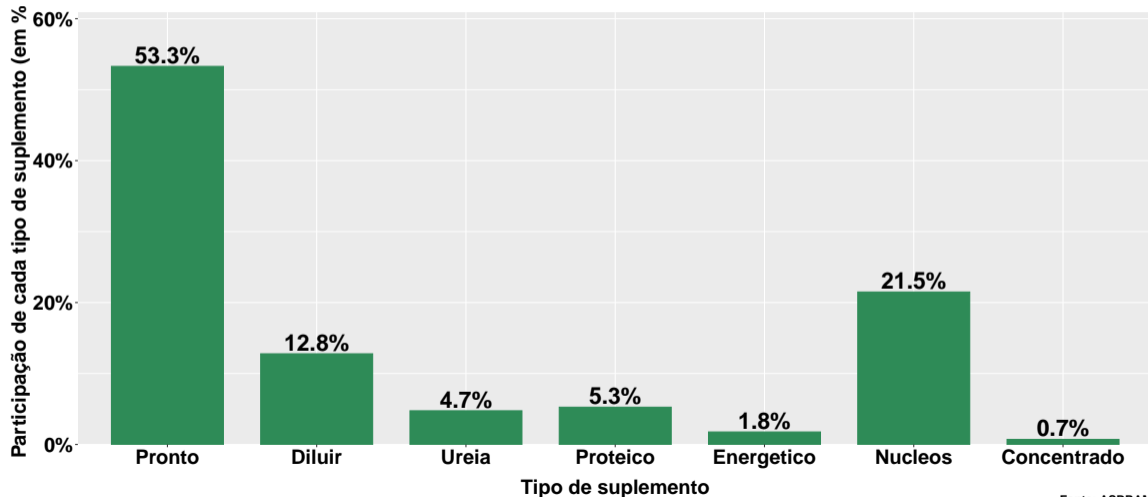


Núm. animais suplementados ano - pecuária corte

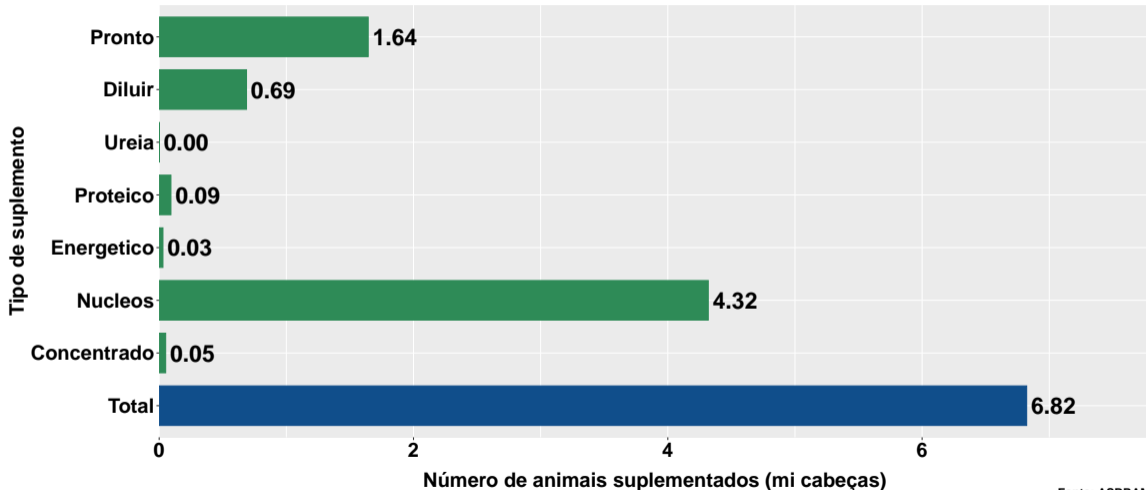


Fonte: ASBRAM

Part. suplemento no núm. animais suplementados no ano - pecuária corte

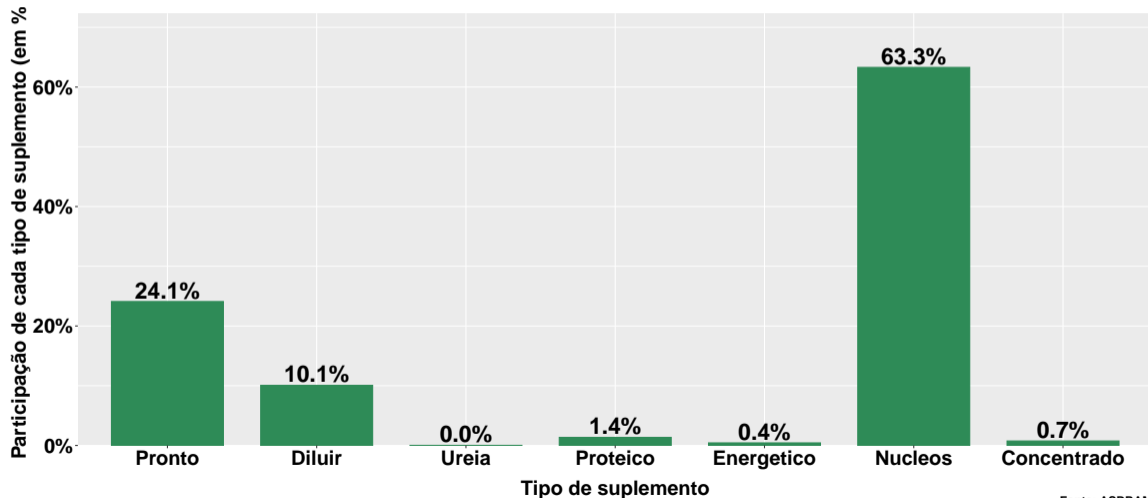


Núm. animais suplementados ano - pecuária leite

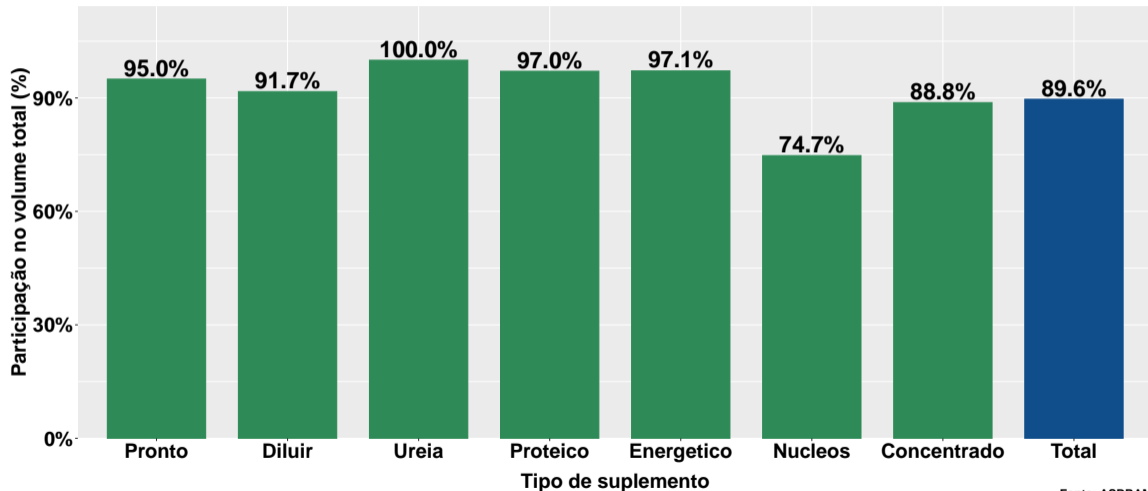


Fonte: ASBRAM

Part. suplemento no núm. animais suplementados no ano - pecuária leite

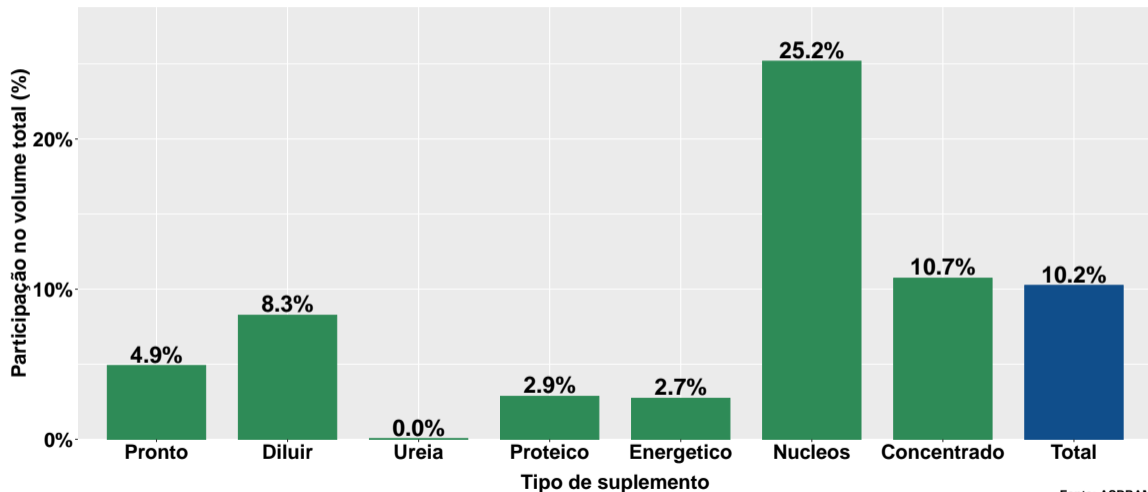


Part. pecuária corte no num. animais total - no ano

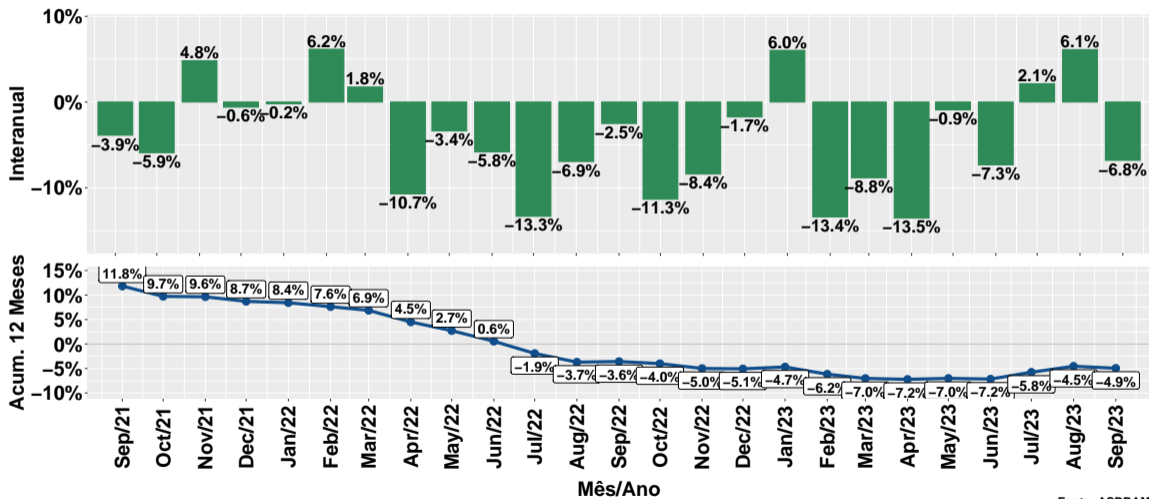


Fonte: ASBRAM

Part. pecuária leite no num. animais total - no ano



Evolução do número de animais suplementados



Fonte: ASBRAM

Síntese de September/2023 (Parte 01)

	Num. animais ¹	Variação (%)			
		Mensal ²	Interanual ³	Acum. ano	12 meses
Pronto	34.0	-9.5%	-6.5%	-3.8%	-5.3%
Diluir	9.2	0.2%	8.4%	2.1%	-2.3%
Ureia	2.7	-22.2%	-4.0%	-12.9%	-10.3%
Proteico	3.4	-18.4%	-20.3%	-17.3%	-13.3%
Energetico	1.0	-3.2%	-19.7%	-9.9%	-8.5%
Nucleos	19.8	-12.3%	-10.5%	-3.0%	-2.6%
Concentrado	0.6	-19.7%	7.0%	-1.8%	-5.9%
Total	70.7	-9.2%	-6.8%	-4.2%	-4.9%

Note: Fonte: ASBRAM

¹ Milhões de cabeças ² Mês/Mês anterior com ajuste sazonal ³ Mês/Mesmo mês ano anterior

Síntese de September/2023 (Parte 02)

	Contribuição (em p.p.)			
	Mensal ²	Interanual ³	Acum. ano	12 meses
Pronto	-4.8	-3.1	-1.9	-2.7
Diluir	0.0	0.9	0.2	-0.3
Ureia	-0.9	-0.1	-0.6	-0.4
Proteico	-0.9	-1.1	-1.0	-0.7
Energetico	-0.0	-0.3	-0.2	-0.1
Nucleos	-3.4	-3.1	-0.8	-0.6
Concentrado	-0.2	0.1	-0.0	-0.0
Total	-9.2	-6.8	-4.2	-4.9

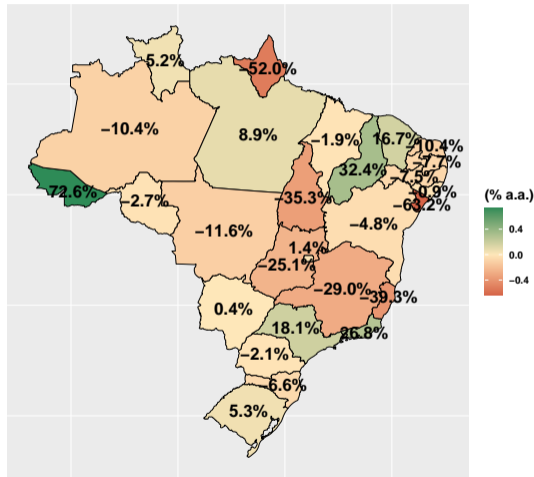
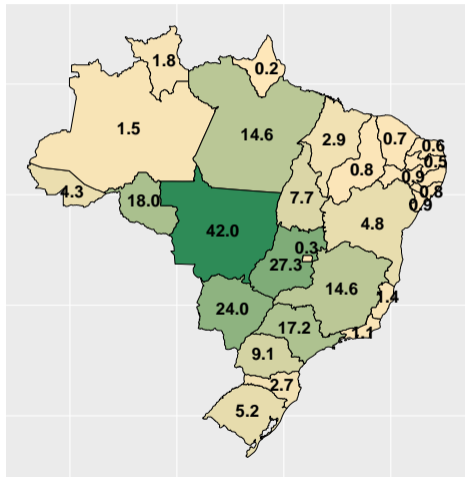
Note: Fonte: ASBRAM

¹ Milhões de cabeças ² Mês/Mês anterior com ajuste sazonal ³ Mês/Mesmo mês ano anterior

Section 4

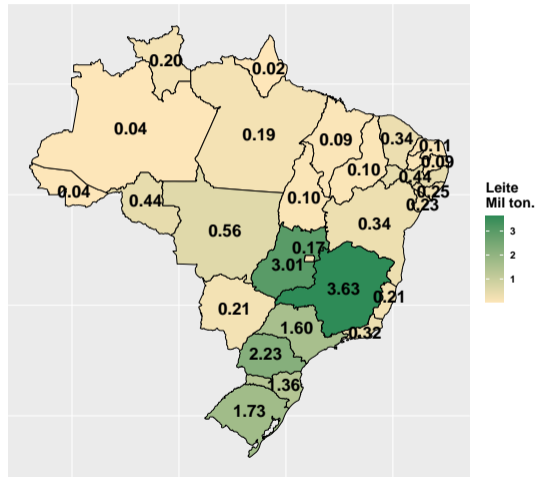
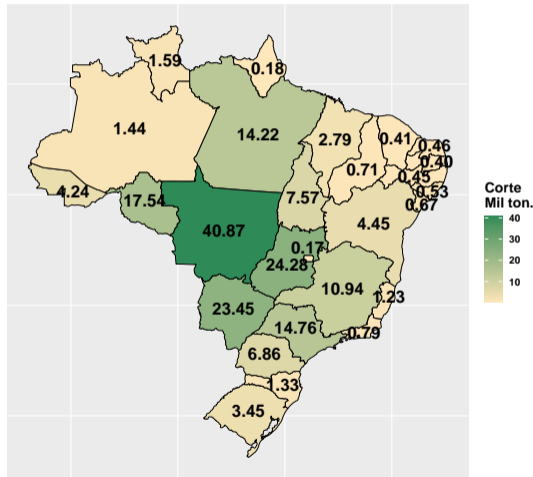
Desempenho por Unidade da Federação (UF)

Volume total (e var. interanual) de vendas de suplementos no mês



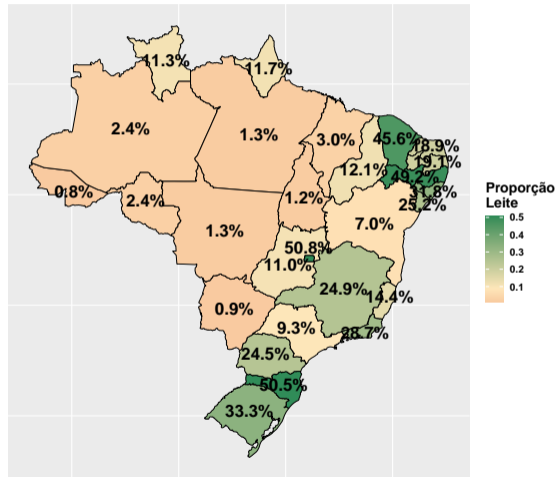
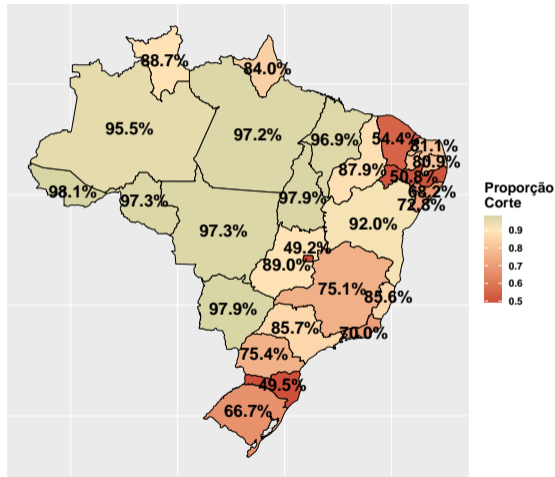
Fonte: ASBRAM

Volume total de vendas de suplementos no mês por tipo pecuária



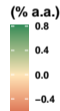
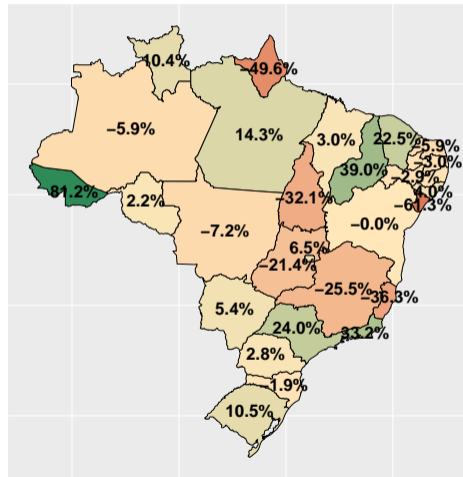
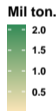
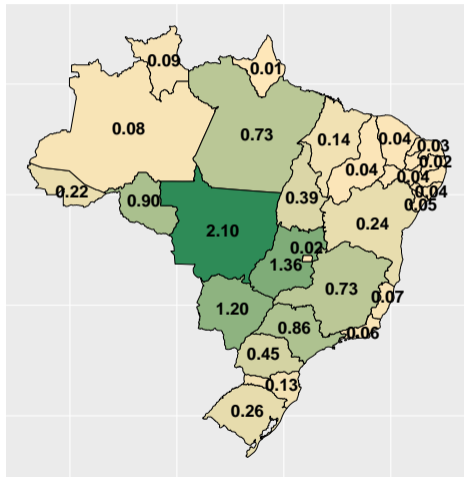
Fonte: ASBRAM

Participação no volume de vendas no mês por tipo pecuária



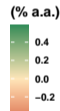
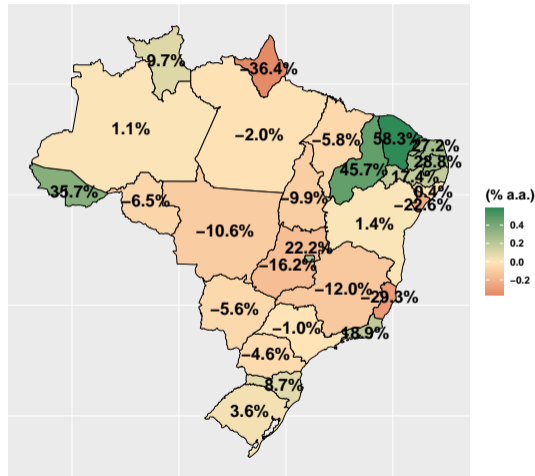
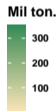
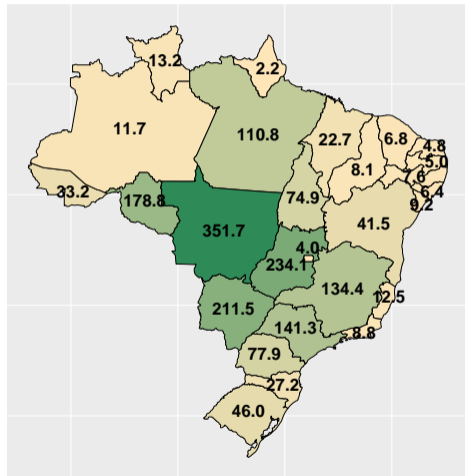
Fonte: ASBRAM

Vol. total (e var. interanual) de vendas no mês por dia útil



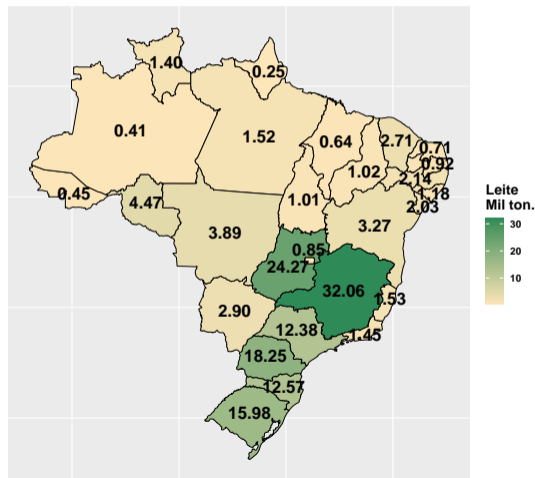
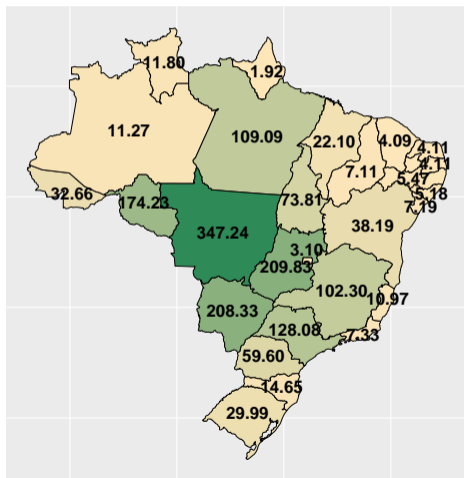
Fonte: ASBRAM

Volume total (e var.) de vendas de suplementos no ano



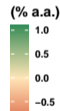
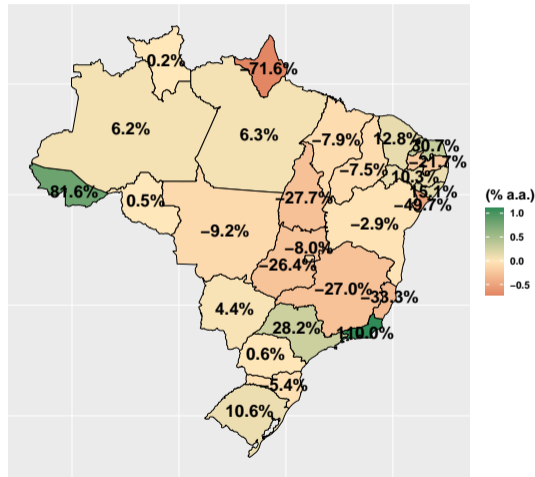
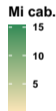
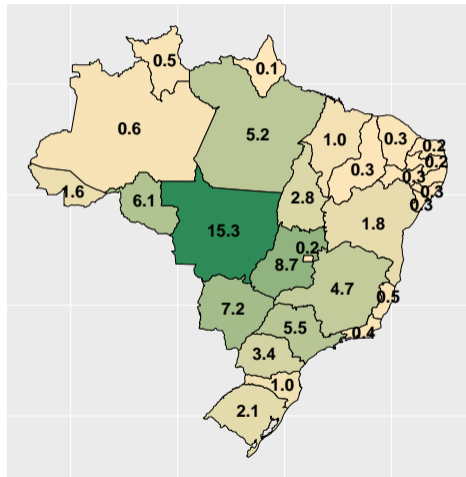
Fonte: ASBRAM

Volume total de vendas de suplementos no ano por tipo de pecuária



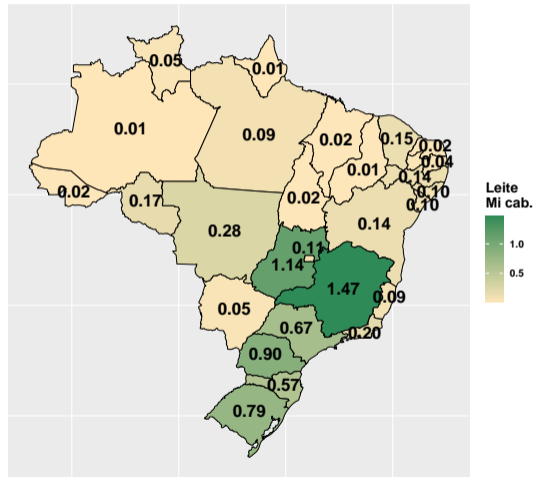
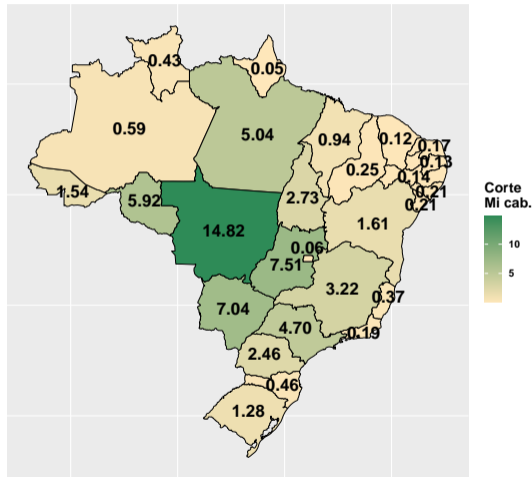
Fonte: ASBRAM

Número (e var. interanual) de animais suplementados no mês



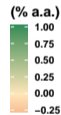
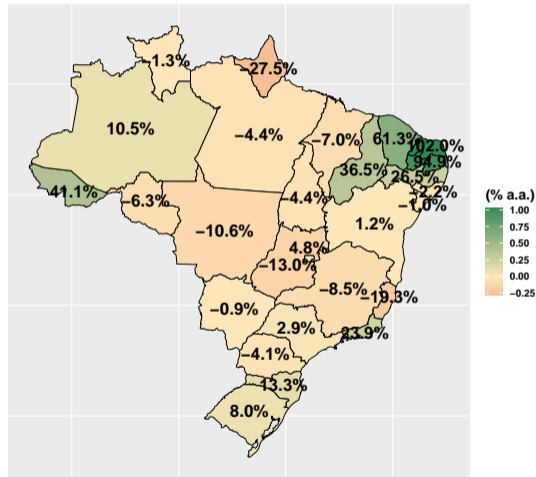
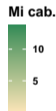
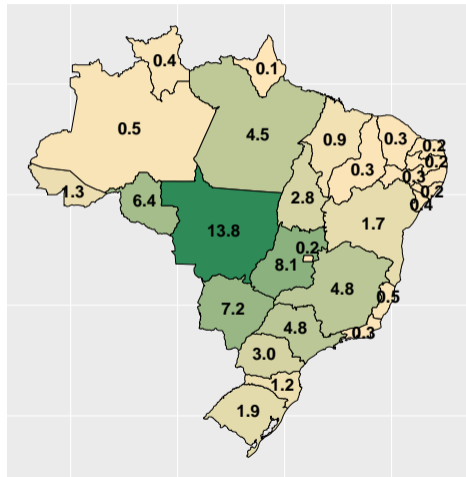
Fonte: ASBRAM

Número de animais suplementados no mês por tipo de pecuária



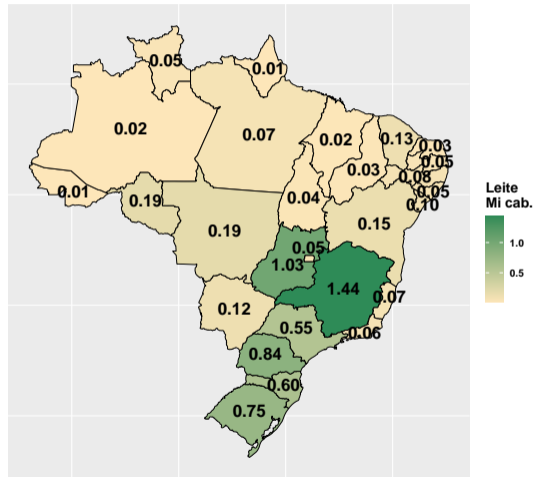
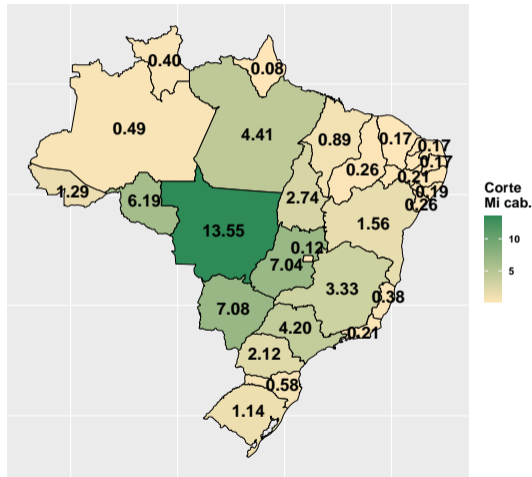
Fonte: ASBRAM

Número (e var.) de animais suplementados no ano



Fonte: ASBRAM

Número de animais suplementados no ano por tipo de pecuária



Fonte: ASBRAM