

Índice ASBRAM

Desempenho Novembro/2023

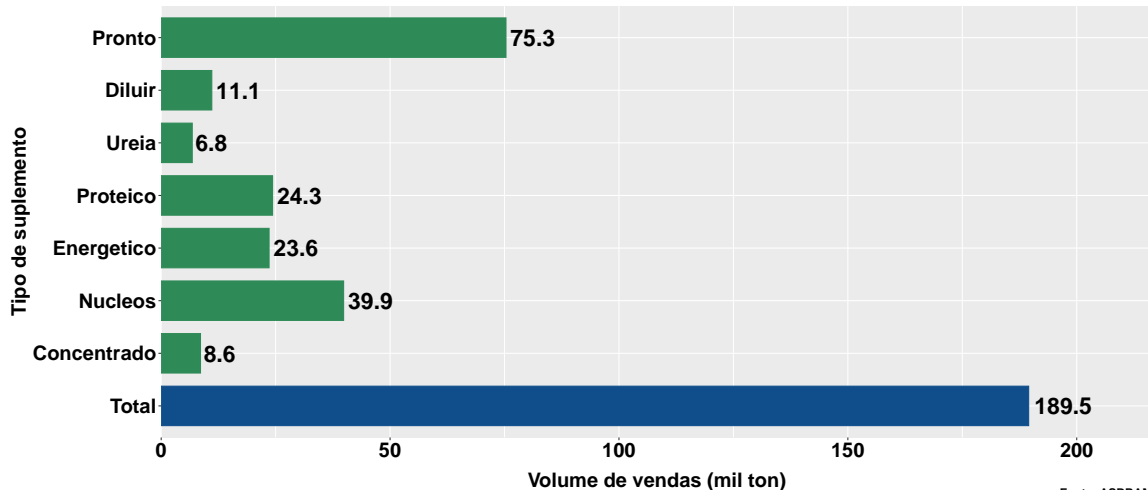
São Paulo, 14/12/2023

- 1 Volume de vendas de suplementos no Brasil
- 2 Projeções para o final de 2023
- 3 Número de animais suplementados no Brasil
- 4 Desempenho por Unidade da Federação (UF)

Section 1

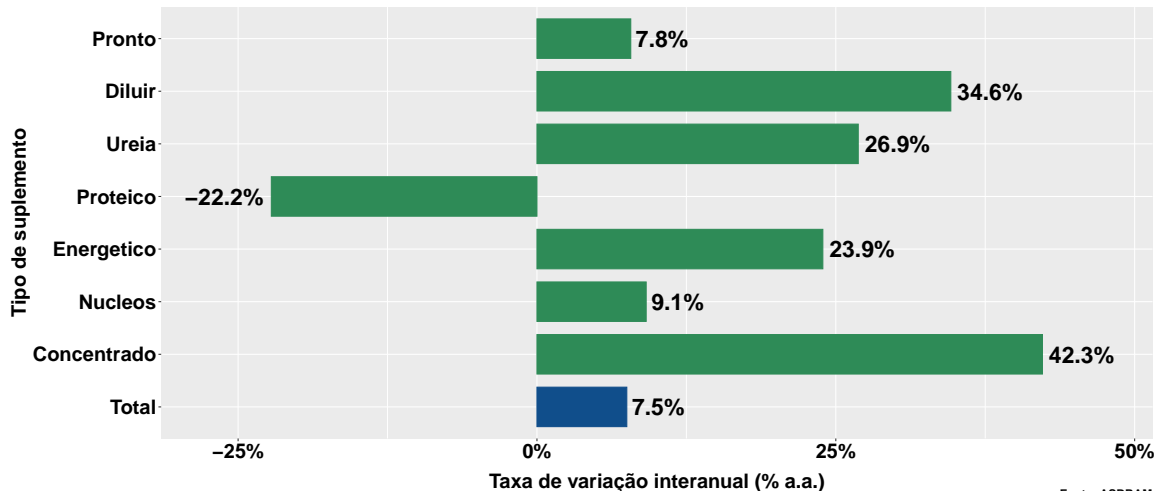
Volume de vendas de suplementos no Brasil

Volume de vendas no mês



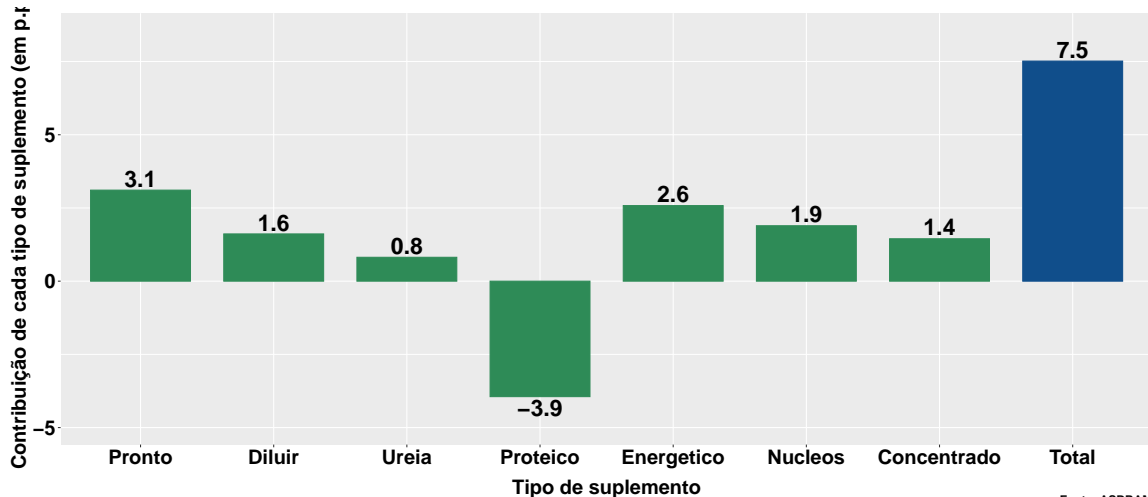
Fonte: ASBRAM

Variação interanual do volume de vendas

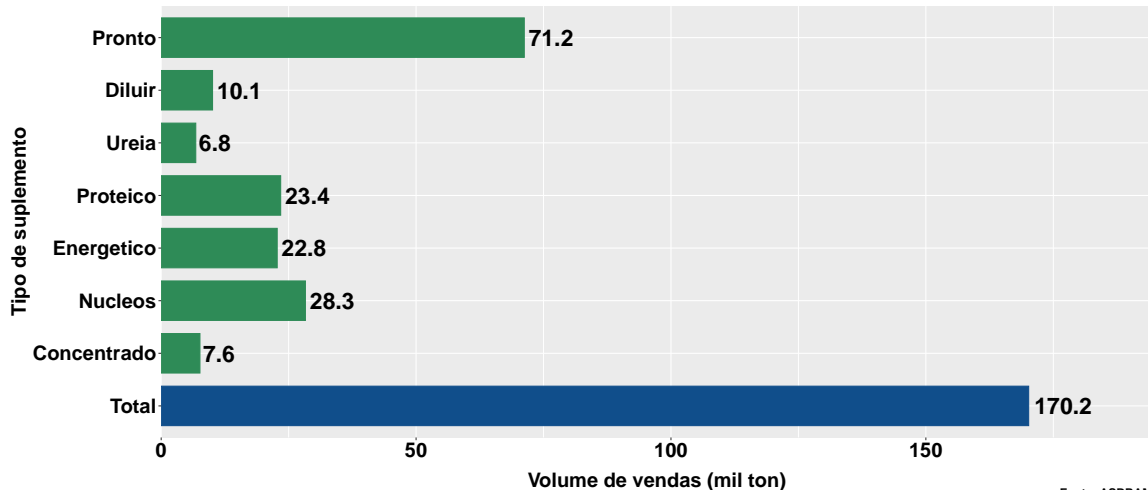


Fonte: ASBRAM

Contribuição de cada suplemento para variação interanual do volume de vendas

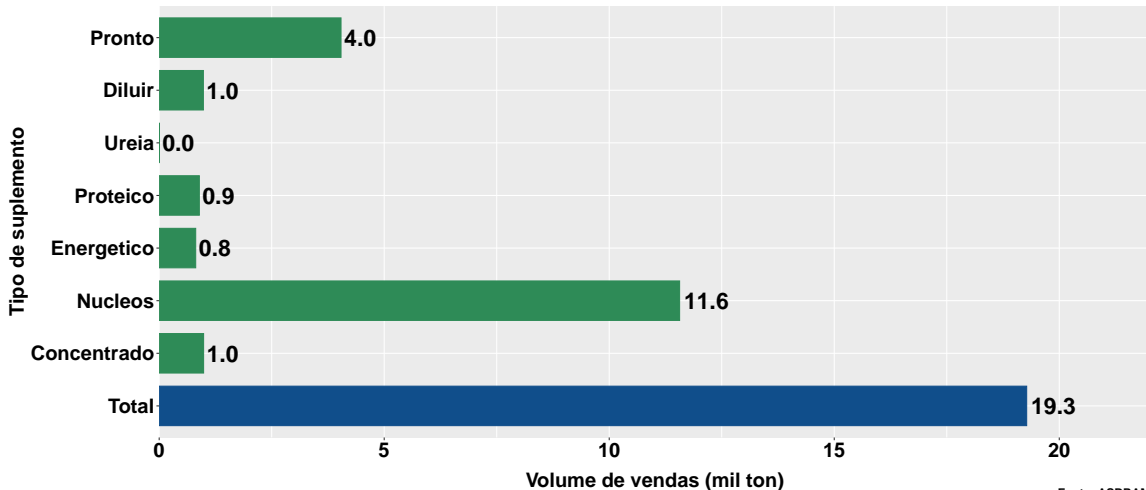


Volume de vendas no mês - pecuária corte



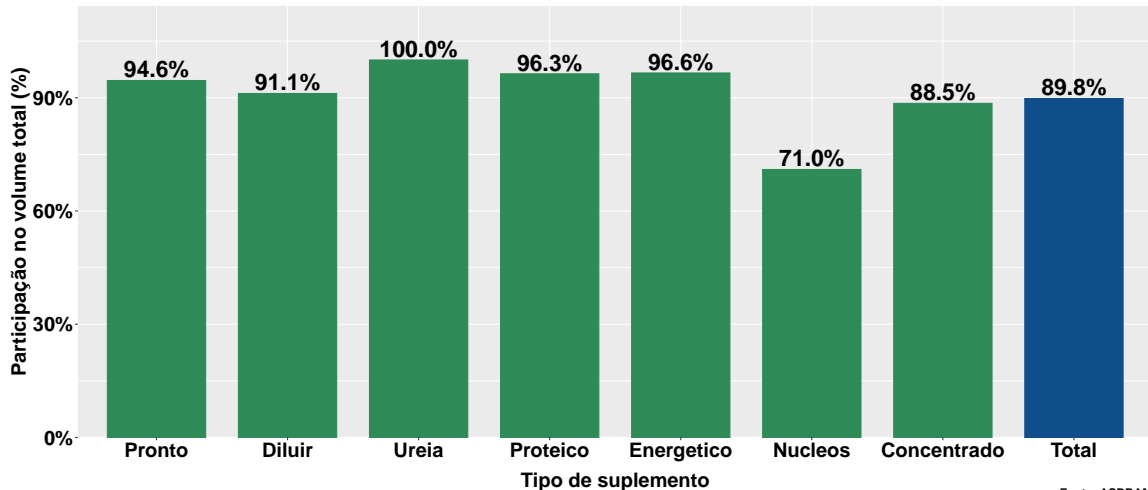
Fonte: ASBRAM

Volume de vendas no mês - pecuária leite



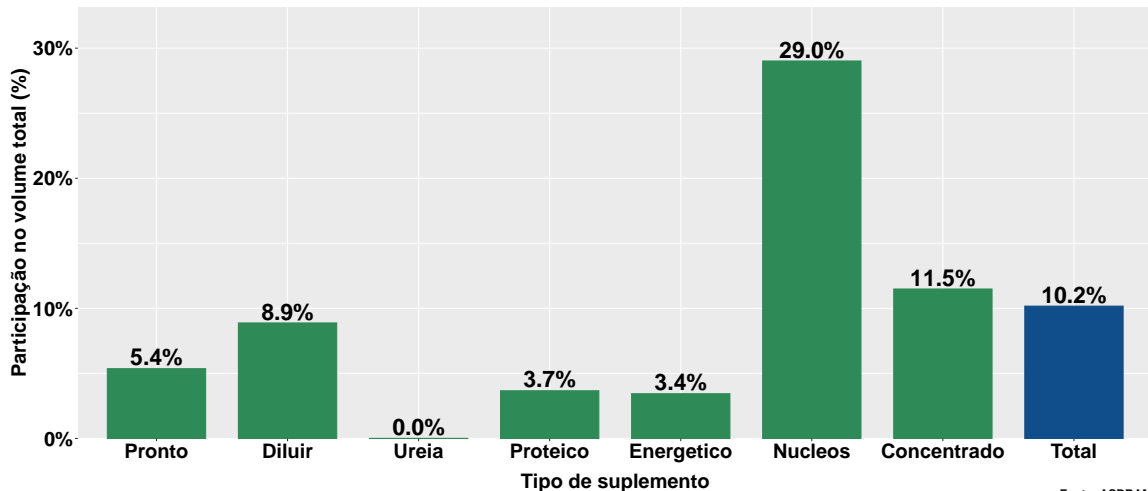
Fonte: ASBRAM

Part. pecuária corte no volume total - no mês



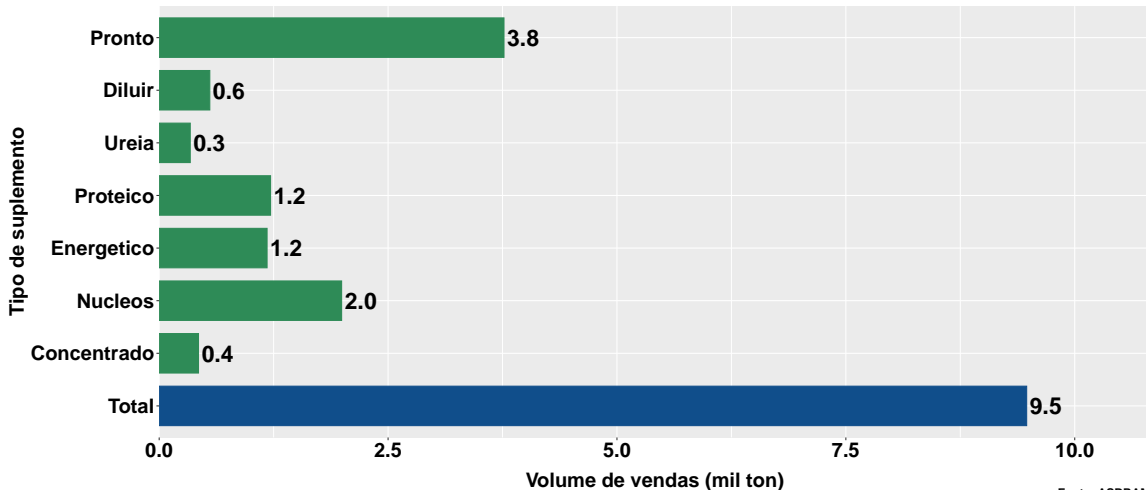
Fonte: ASBRAM

Part. pecuária leite no volume total - no mês



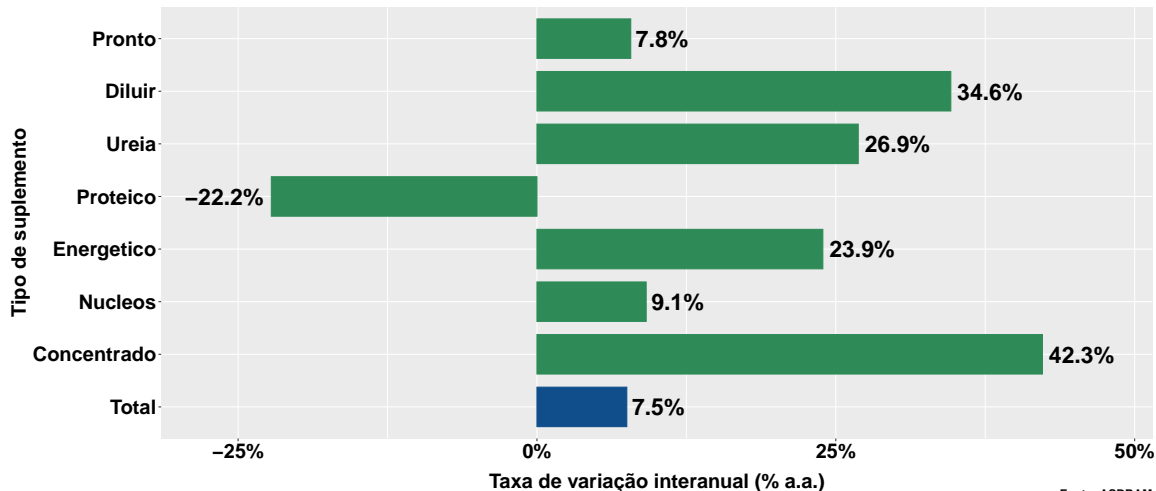
Fonte: ASBRAM

Volume de vendas no mês por dia útil



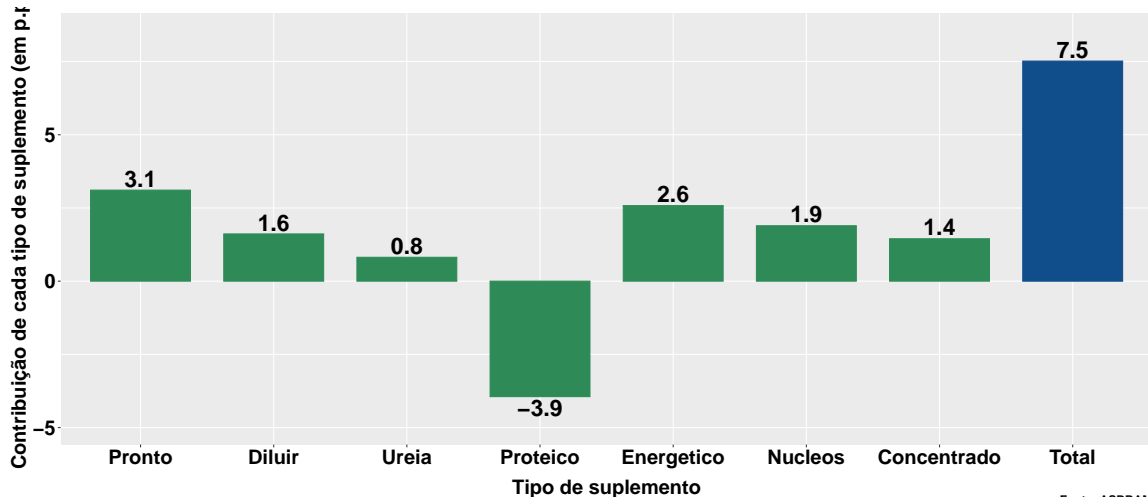
Fonte: ASBRAM

Variação interanual do volume de vendas por dia útil

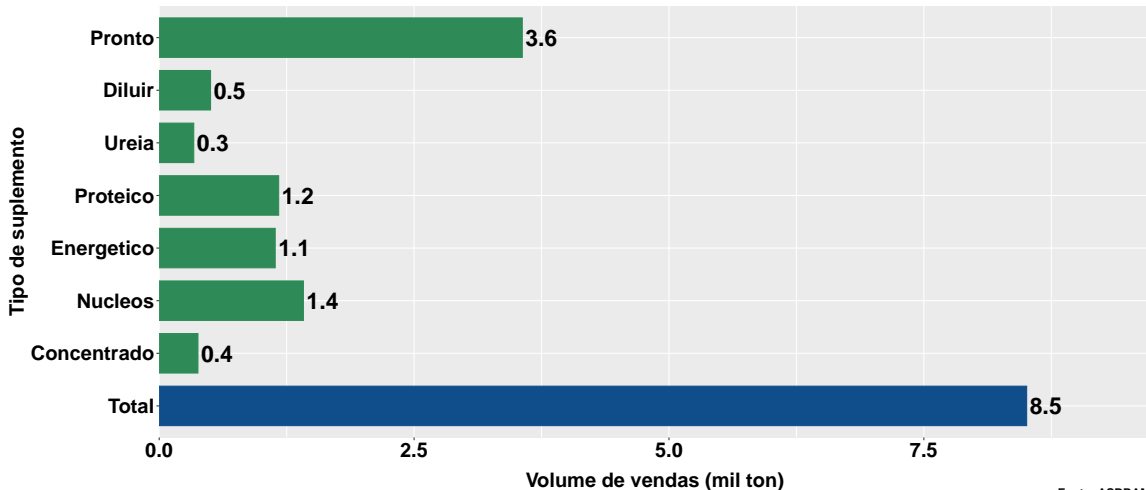


Fonte: ASBRAM

Contribuição de cada suplemento para variação interanual do volume de vendas por dia útil

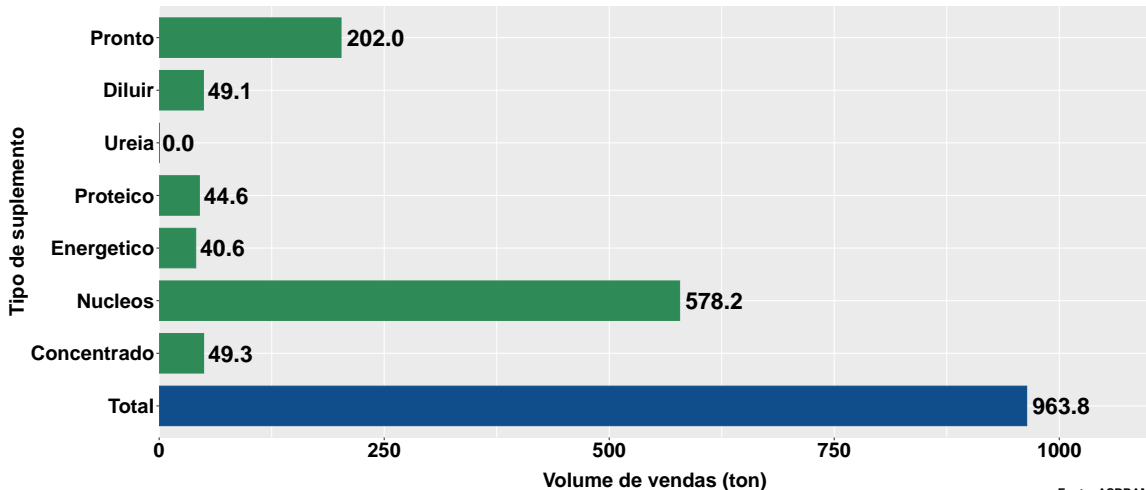


Volume de vendas dia útil - pecuária corte



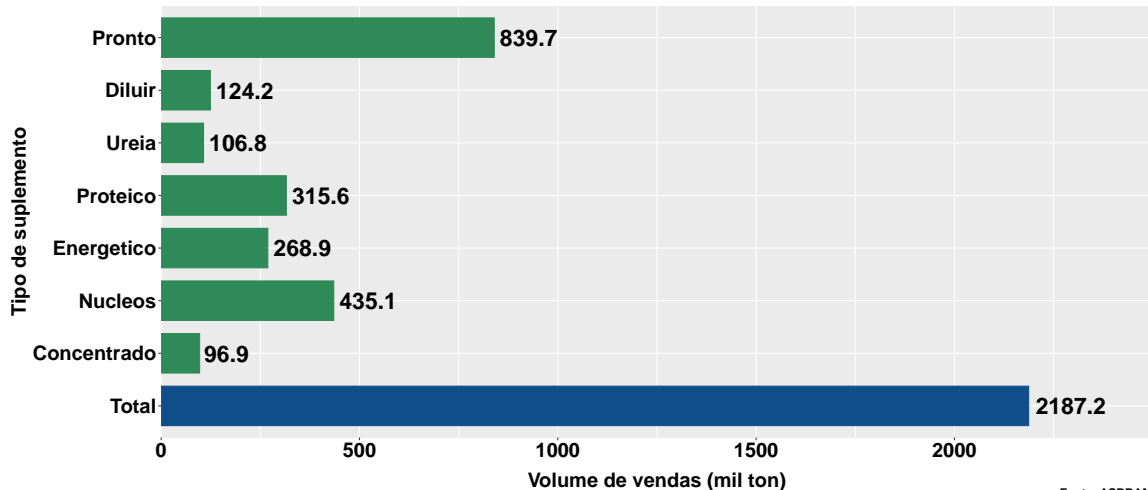
Fonte: ASBRAM

Volume de vendas dia útil - pecuária leite



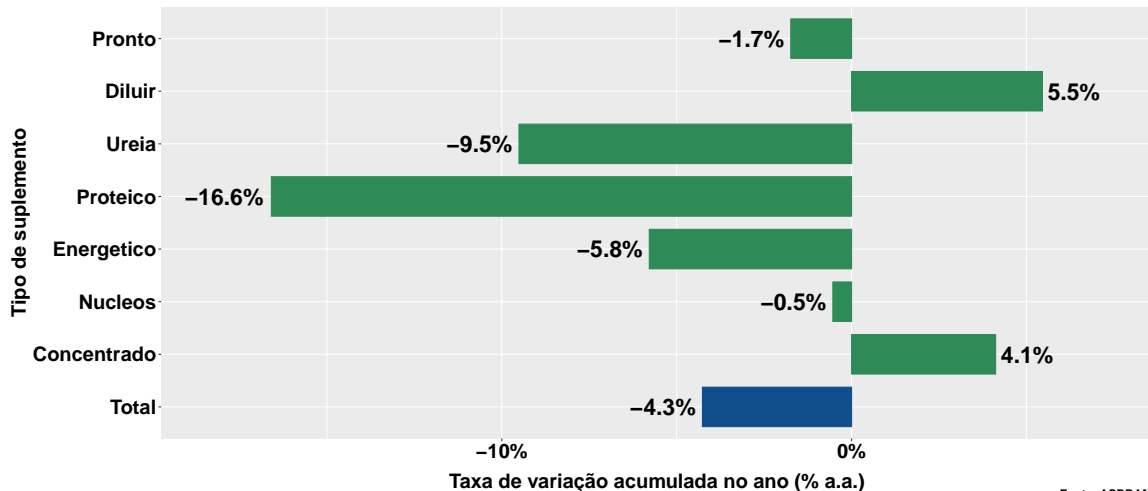
Fonte: ASBRAM

Volume de vendas acumulado no ano



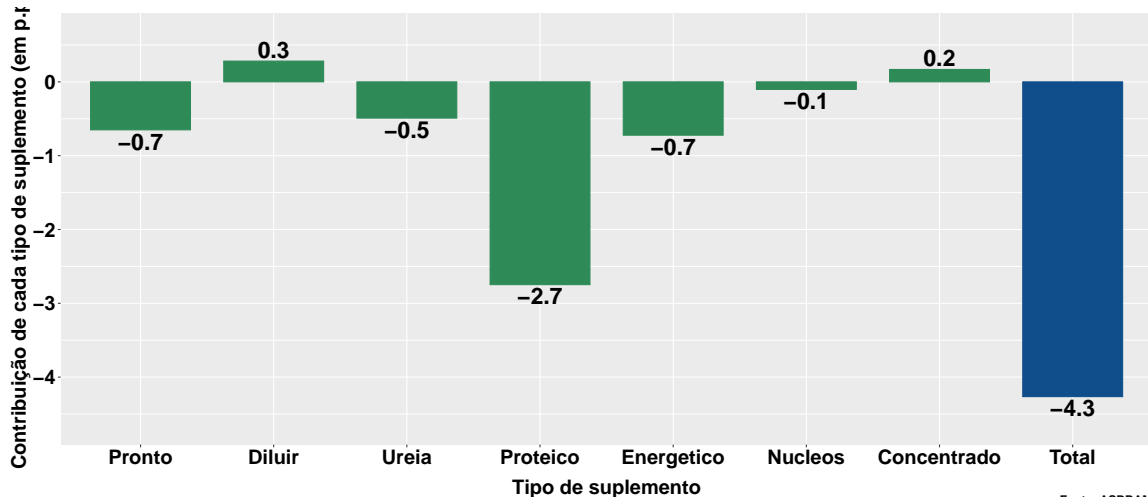
Fonte: ASBRAM

Varição do volume de vendas acumulado no ano

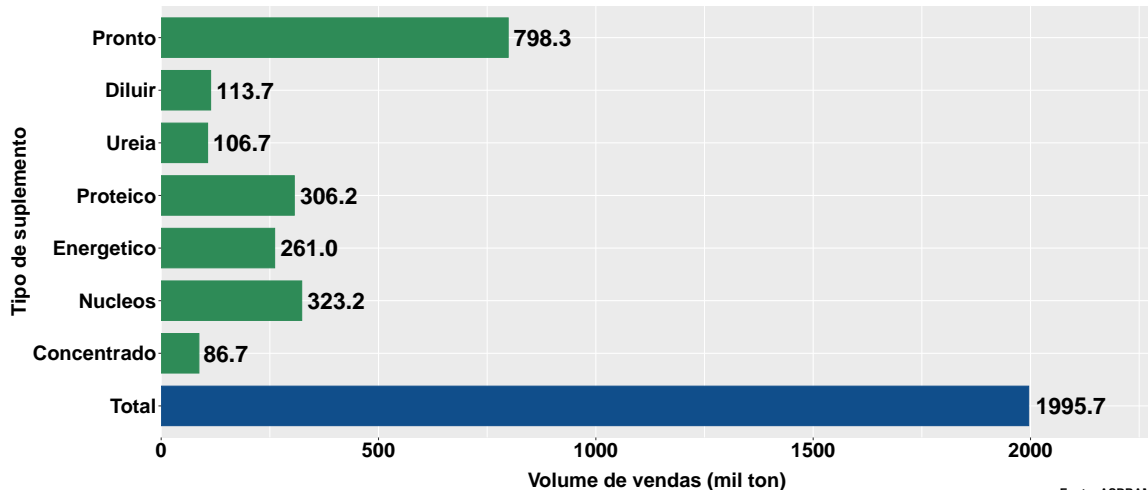


Fonte: ASBRAM

Contribuição de cada suplemento para variação do volume de vendas acumulado no ano

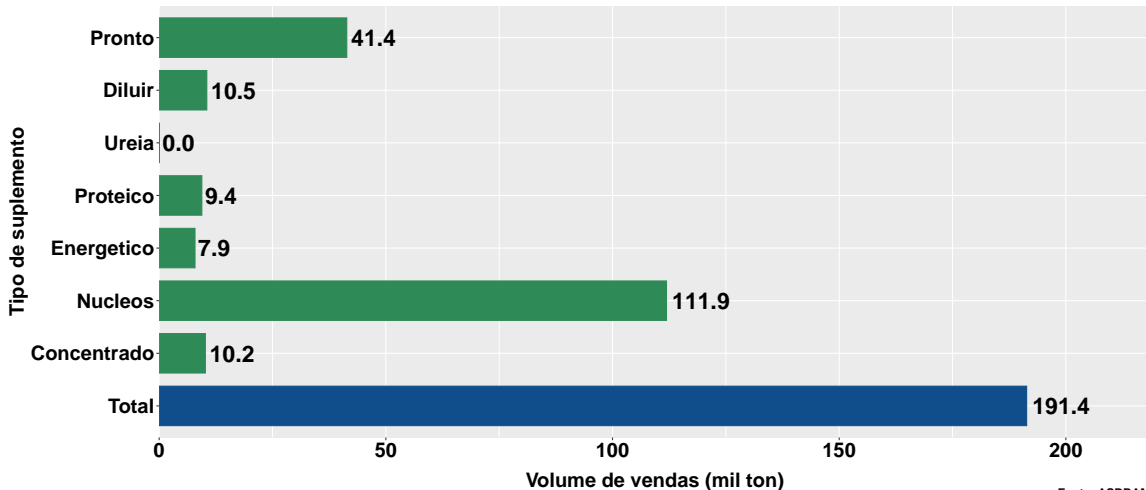


Volume acumulado no ano - pecuária corte



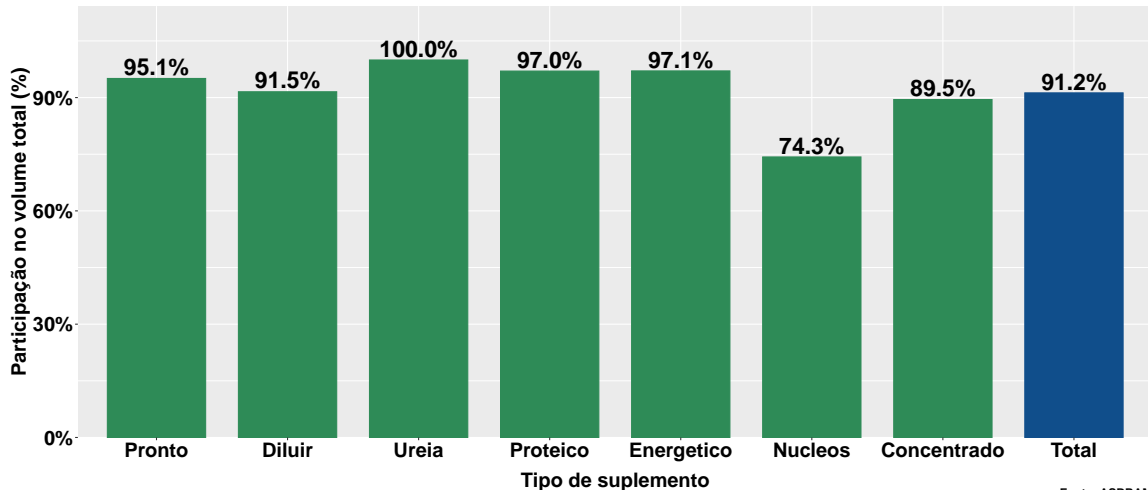
Fonte: ASBRAM

Volume acumulado no ano - pecuária leite



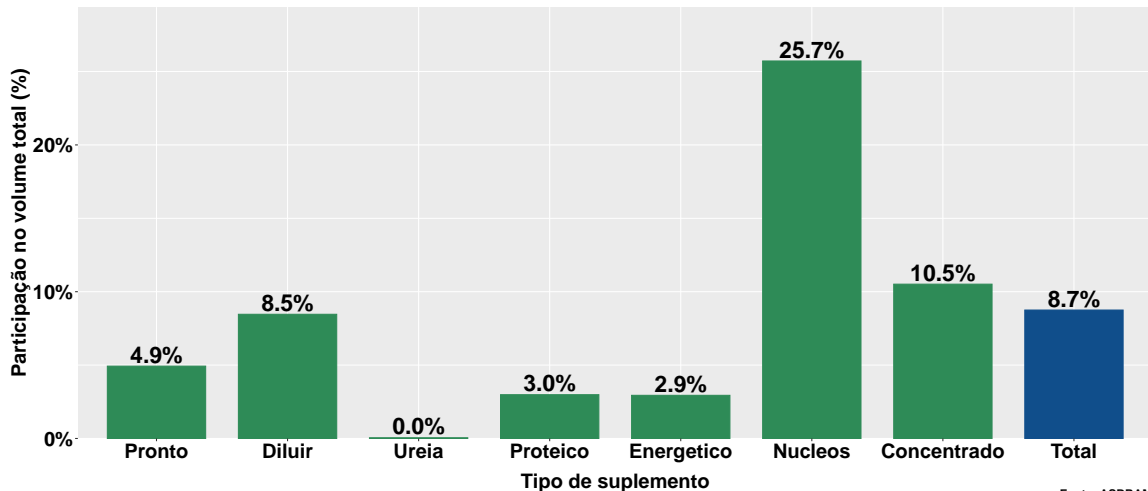
Fonte: ASBRAM

Part. pecuária corte no volume total - no ano



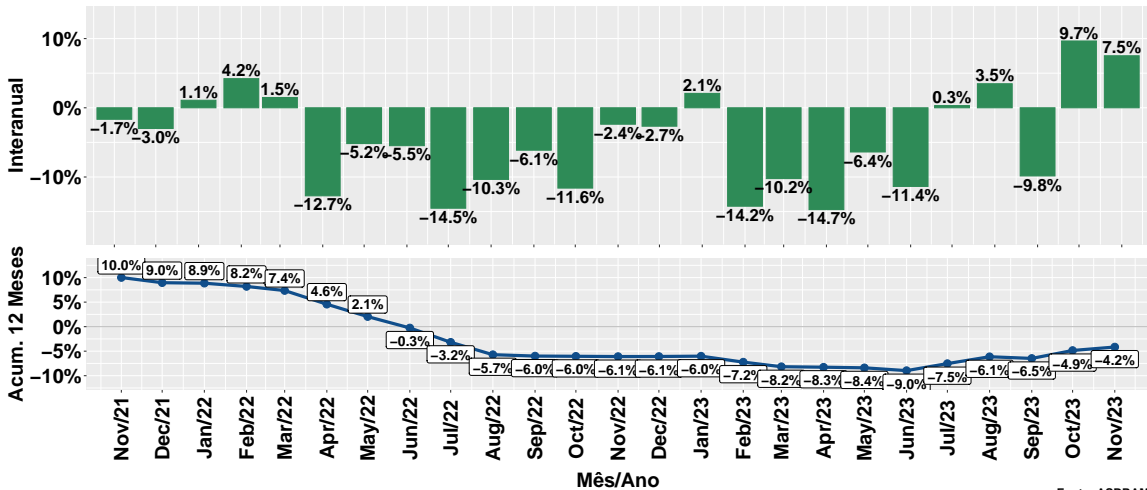
Fonte: ASBRAM

Part. pecuária leite no volume total - no ano



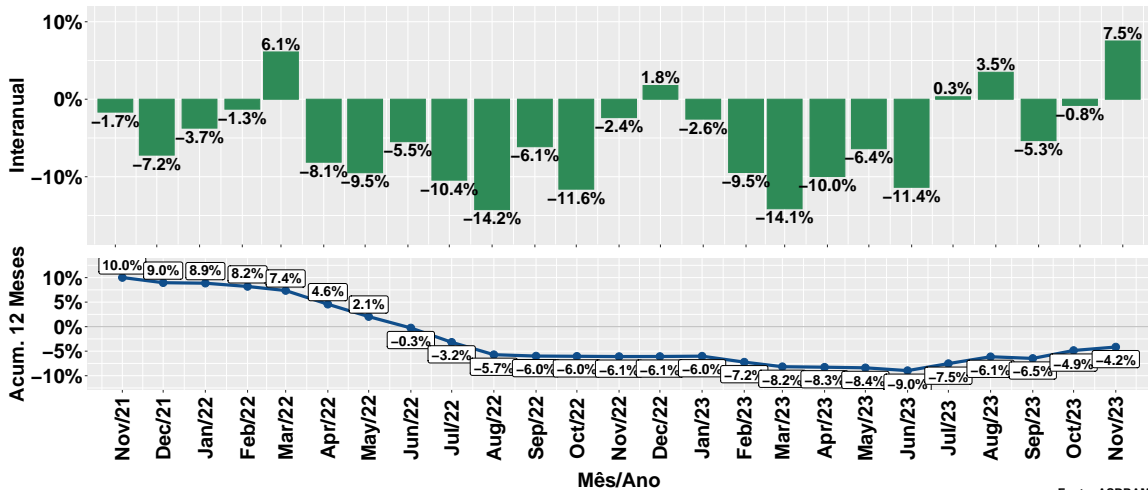
Fonte: ASBRAM

Evolução do volume total de vendas



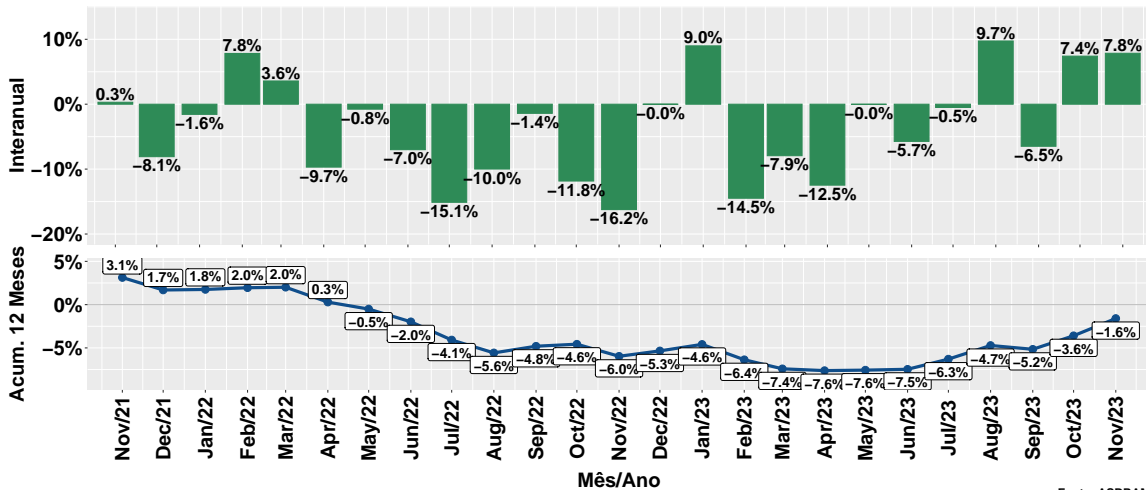
Fonte: ASBRAM

Evolução do volume total de vendas por dia útil



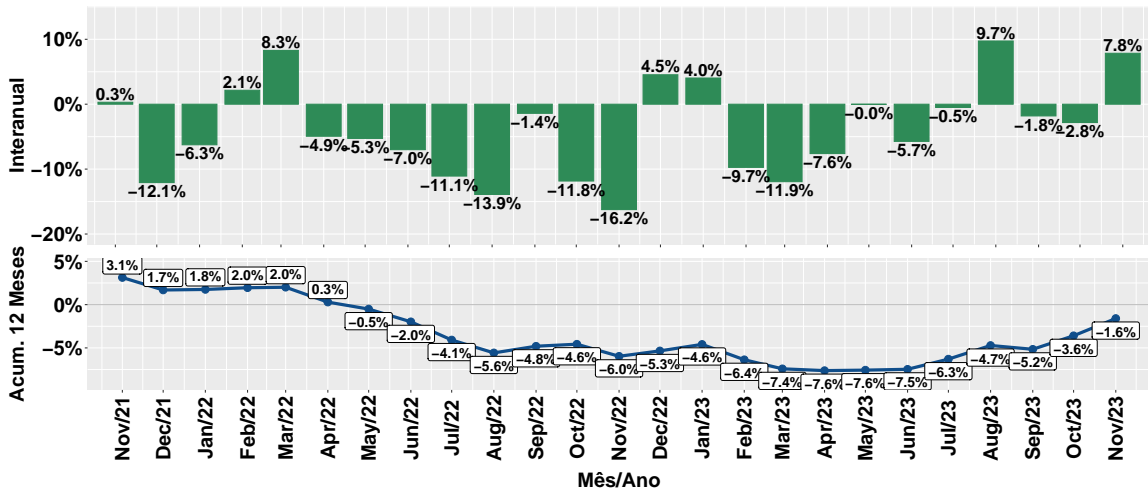
Fonte: ASBRAM

Evolução do volume de vendas: Pronto para uso



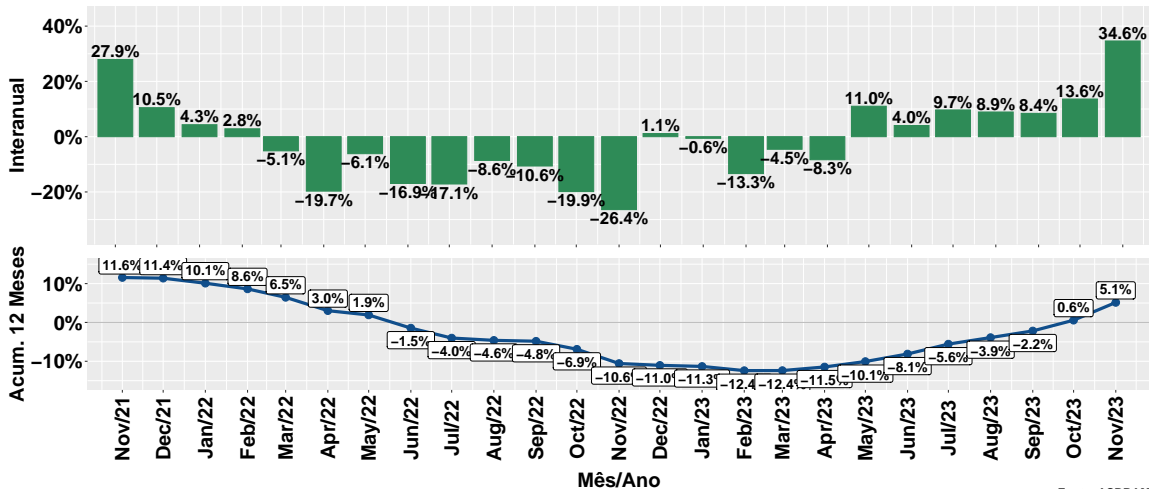
Fonte: ASBRAM

Evolução do volume de vendas por dia útil: Pronto para uso



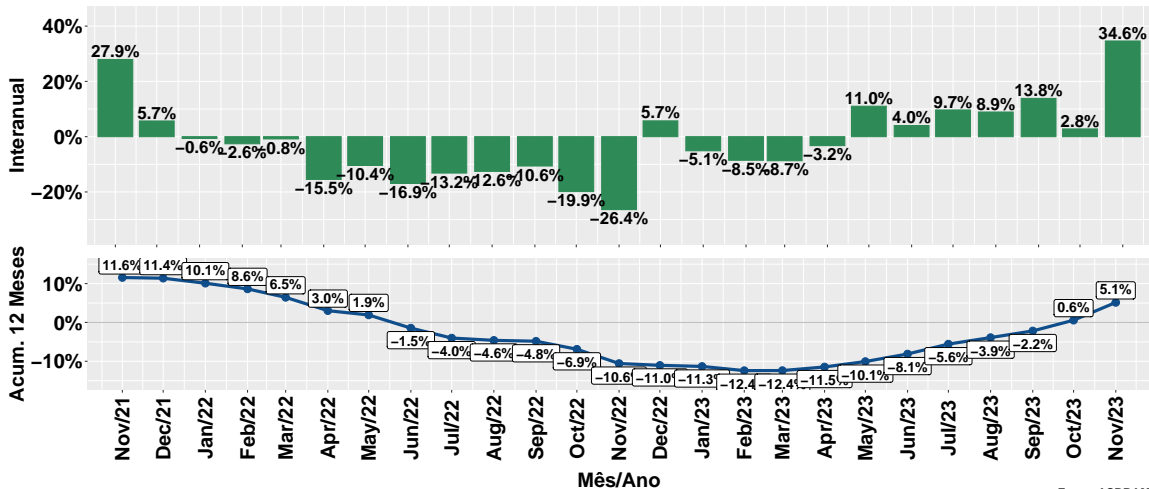
Fonte: ASBRAM

Evolução do volume de vendas: Para diluir



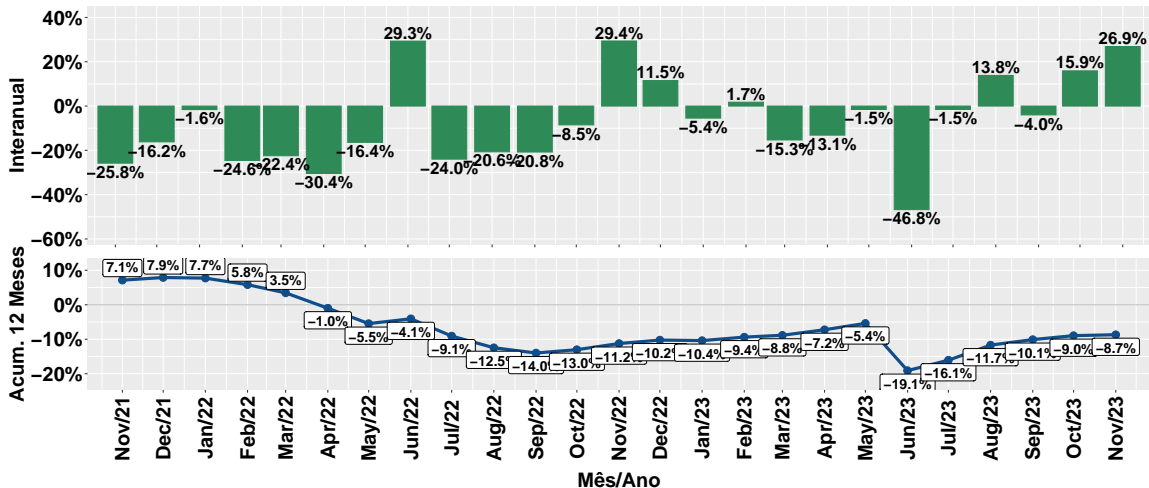
Fonte: ASBRAM

Evolução do volume de vendas por dia útil: Para diluir



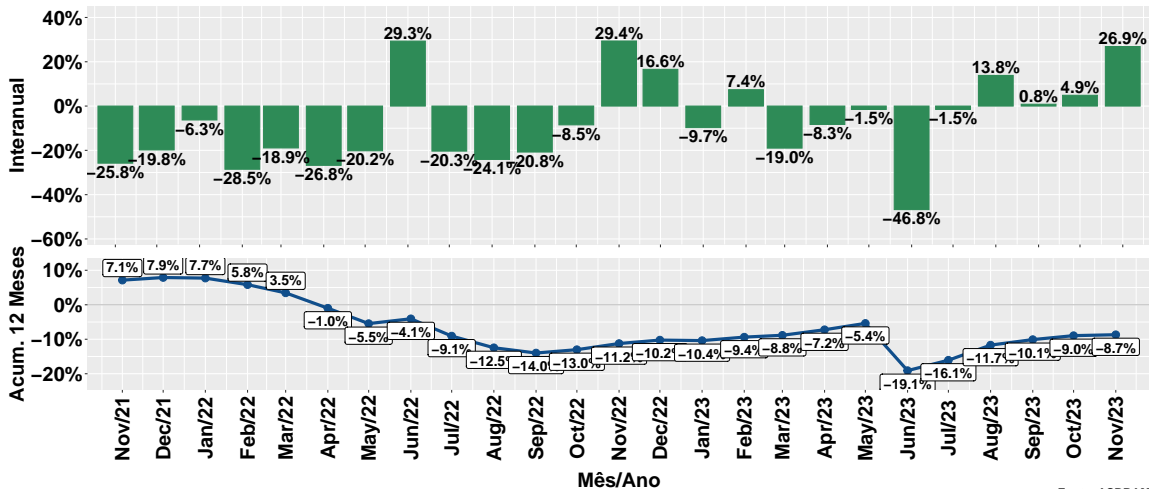
Fonte: ASBRAM

Evolução do volume de vendas: Ureia



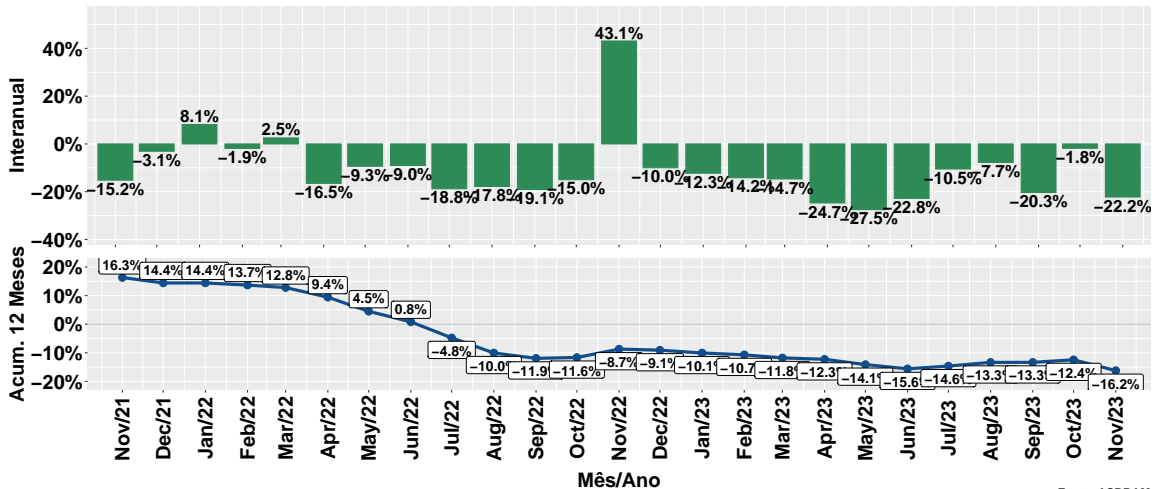
Fonte: ASBRAM

Evolução do volume de vendas por dia útil: Ureia



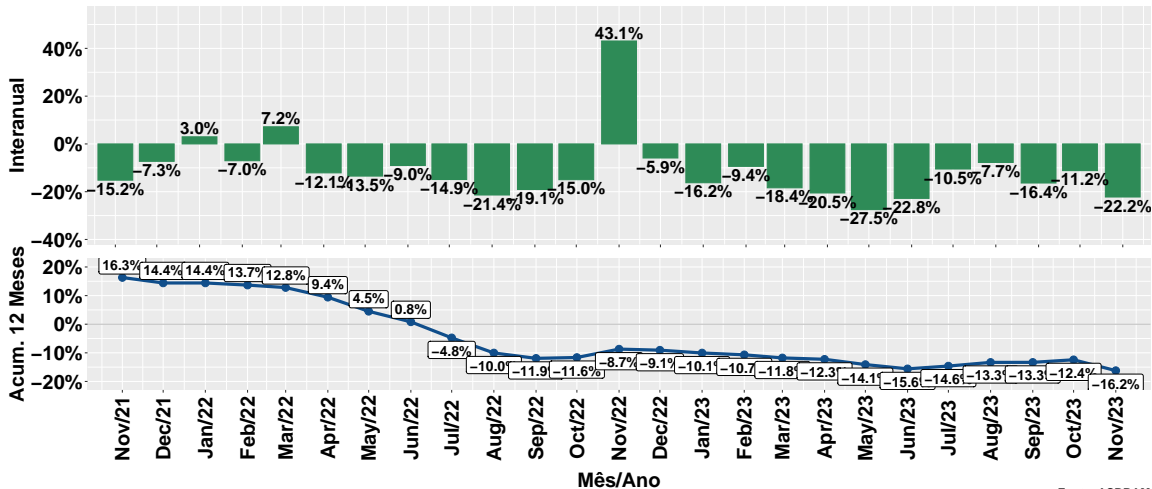
Fonte: ASBRAM

Evolução do volume de vendas: Proteico



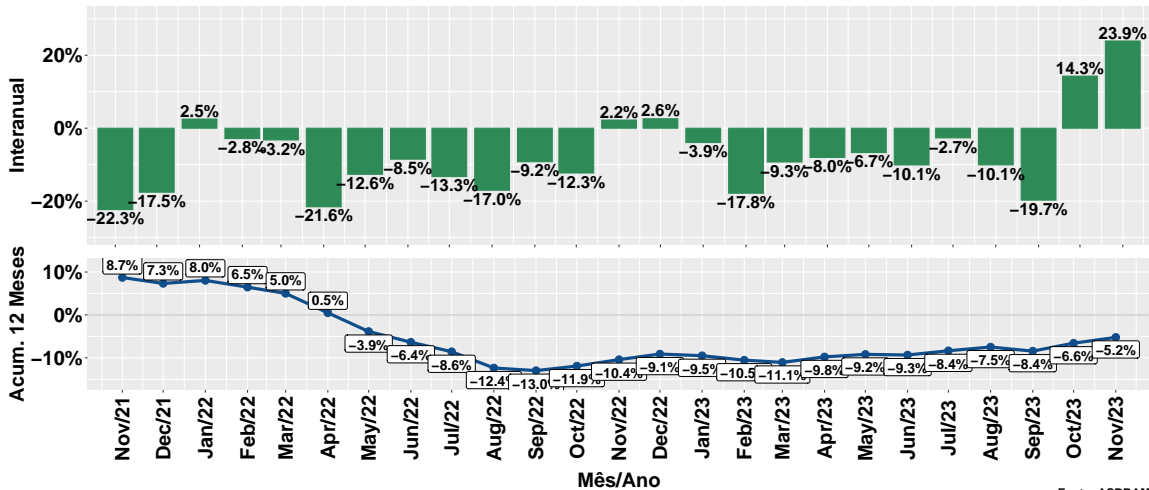
Fonte: ASBRAM

Evolução do volume de vendas por dia útil: Proteico



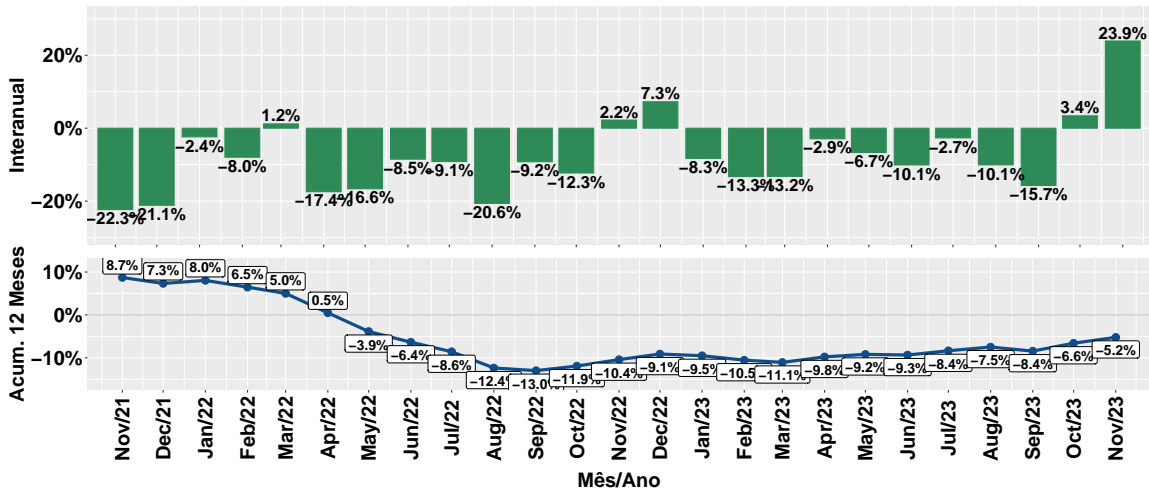
Fonte: ASBRAM

Evolução do volume de vendas: Prot. energético



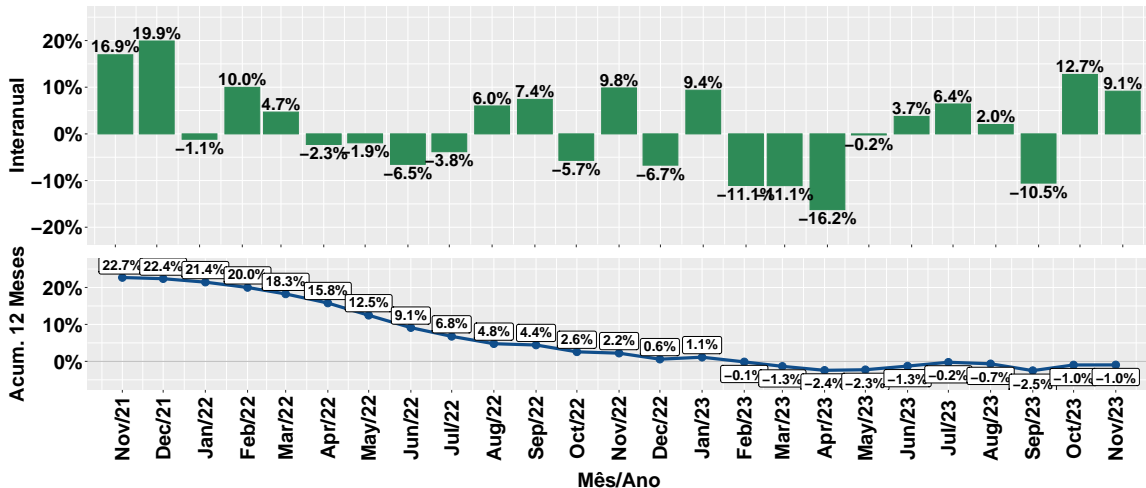
Fonte: ASBRAM

Evolução do volume de vendas por dia útil: Prot. energético



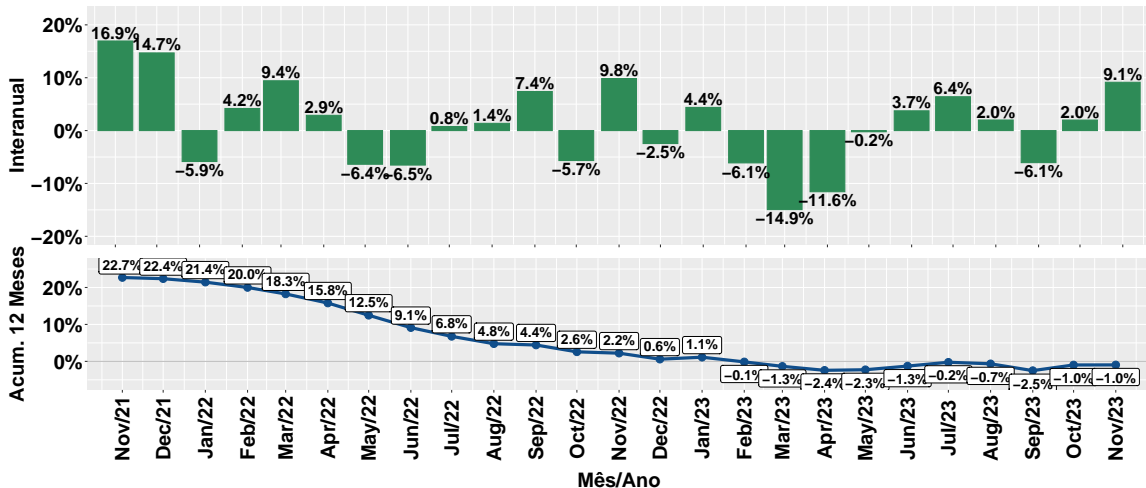
Fonte: ASBRAM

Evolução do volume de vendas: Núcleos



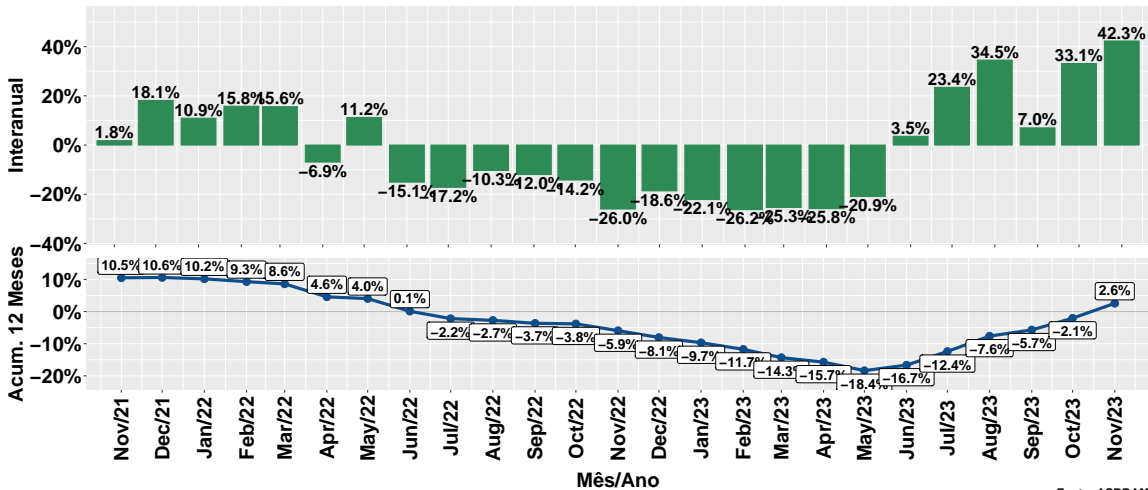
Fonte: ASBRAM

Evolução do volume de vendas por dia útil: Núcleos



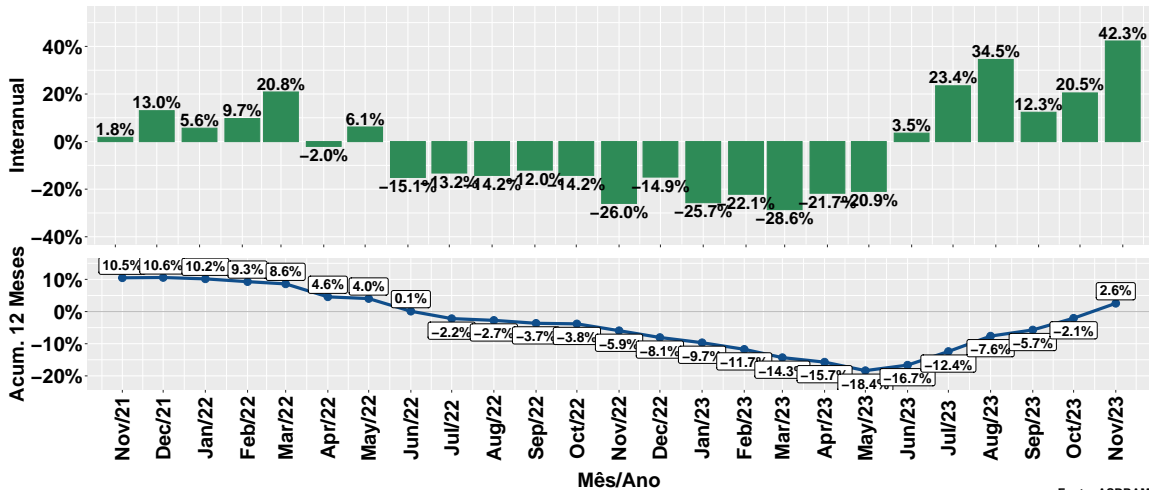
Fonte: ASBRAM

Evolução do volume de vendas: Concentrado



Fonte: ASBRAM

Evolução do volume de vendas por dia útil: Concentrado



Fonte: ASBRAM

Síntese de November/2023 (Parte 01)

	Vol. vendas ¹	Variação (%)			
		Mensal ²	Interanual ³	Acum. ano	12 meses
Pronto	75.3	-3.7%	7.8%	-1.7%	-1.6%
Diluir	11.1	23.7%	34.6%	5.5%	5.1%
Ureia	6.8	12.2%	26.9%	-9.5%	-8.7%
Proteico	24.3	4.8%	-22.2%	-16.6%	-16.2%
Energetico	23.6	-1.7%	23.9%	-5.8%	-5.2%
Nucleos	39.9	1.6%	9.1%	-0.5%	-1.0%
Concentrado	8.6	-1.8%	42.3%	4.1%	2.6%
Total	189.5	1.2%	7.5%	-4.3%	-4.2%

Note: Fonte: ASBRAM

¹ Em mil toneladas ² Mês/Mês anterior com ajuste sazonal ³ Mês/Mesmo mês ano anterior

Síntese de November/2023 (Parte 02)

	Contribuição (em p.p.)			
	Mensal ²	Interanual ³	Acum. ano	12 meses
Pronto	-1.4	3.1	-0.7	-0.6
Diluir	1.2	1.6	0.3	0.3
Ureia	0.6	0.8	-0.5	-0.4
Proteico	0.7	-3.9	-2.7	-2.7
Energetico	-0.2	2.6	-0.7	-0.7
Nucleos	0.3	1.9	-0.1	-0.2
Concentrado	-0.1	1.4	0.2	0.1
Total	1.2	7.5	-4.3	-4.2

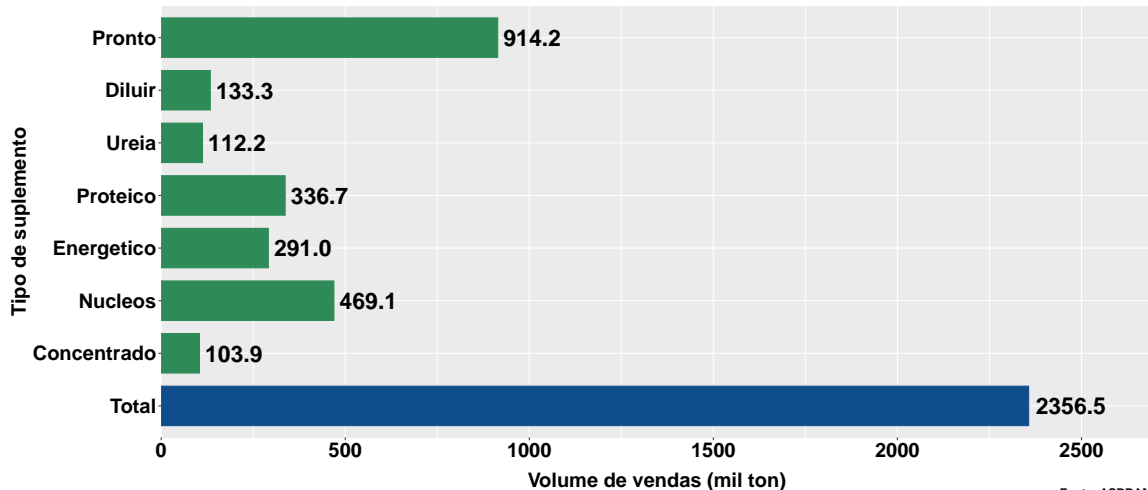
Note: Fonte: ASBRAM

¹ Em mil toneladas ² Mês/Mês anterior com ajuste sazonal ³ Mês/Mesmo mês ano anterior

Section 2

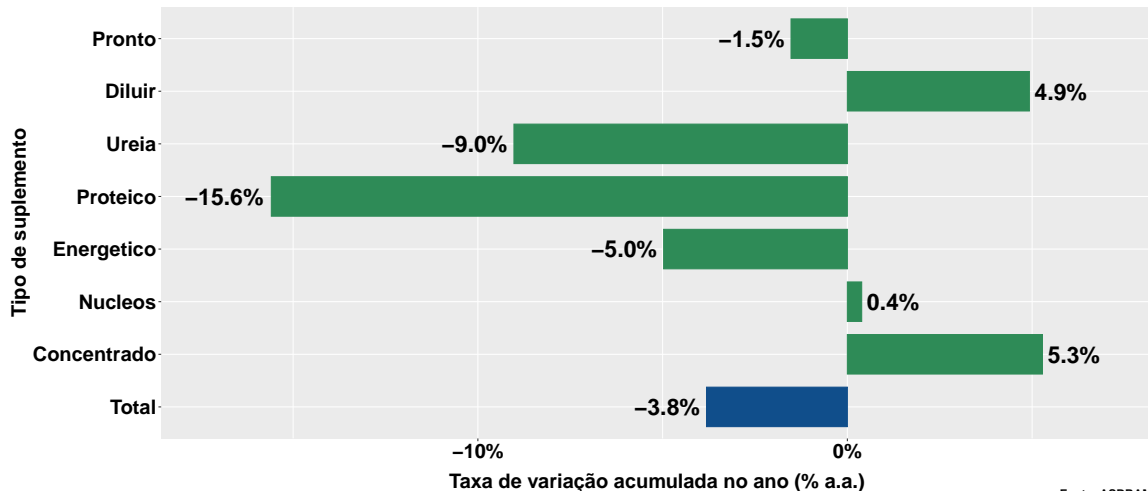
Projeções para o final de 2023

Cenário base para o volume de suplementos



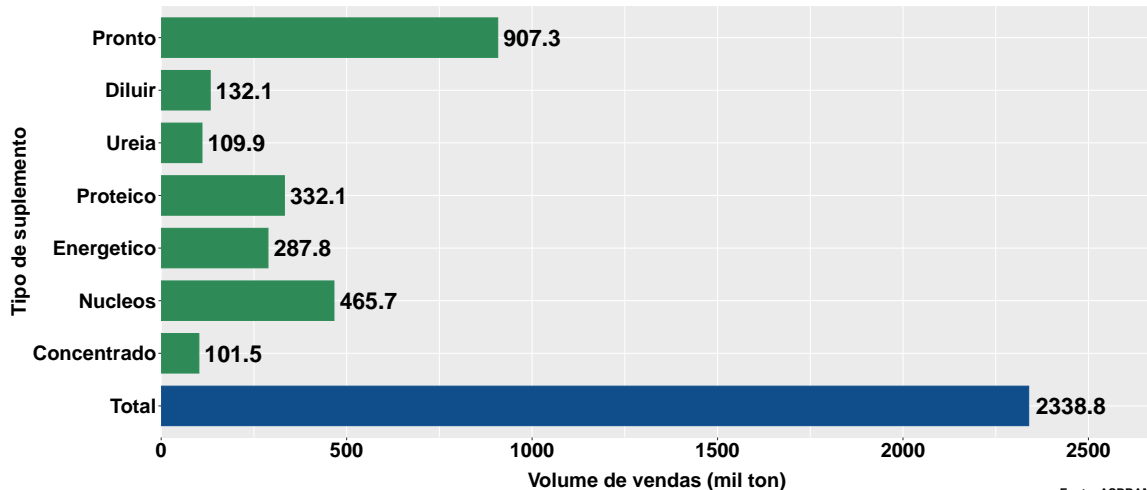
Fonte: ASBRAM

Cenário base para a var. do volume de suplementos



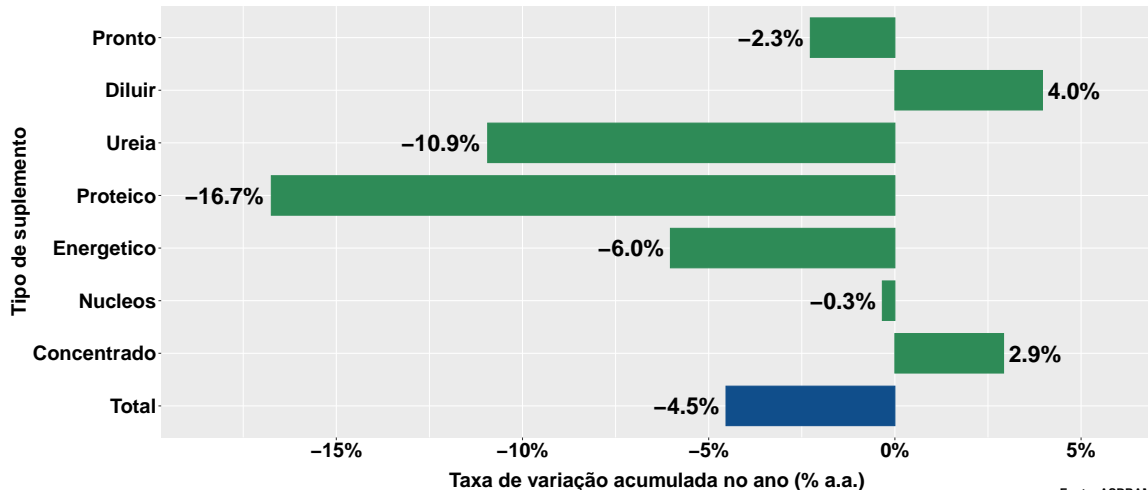
Fonte: ASBRAM

Cenário pessimista para o volume de suplementos



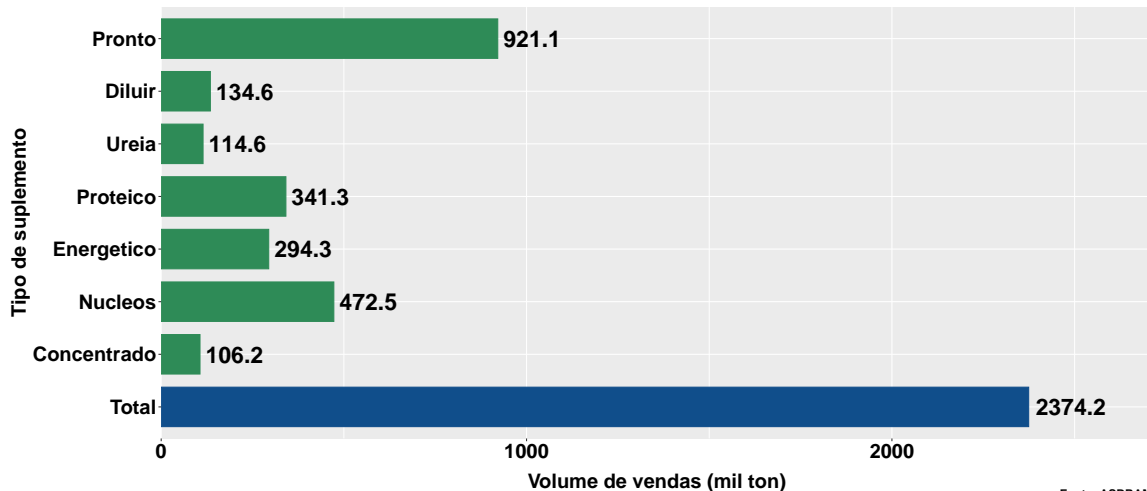
Fonte: ASBRAM

Cenário pessimista para a var. do volume de suplementos



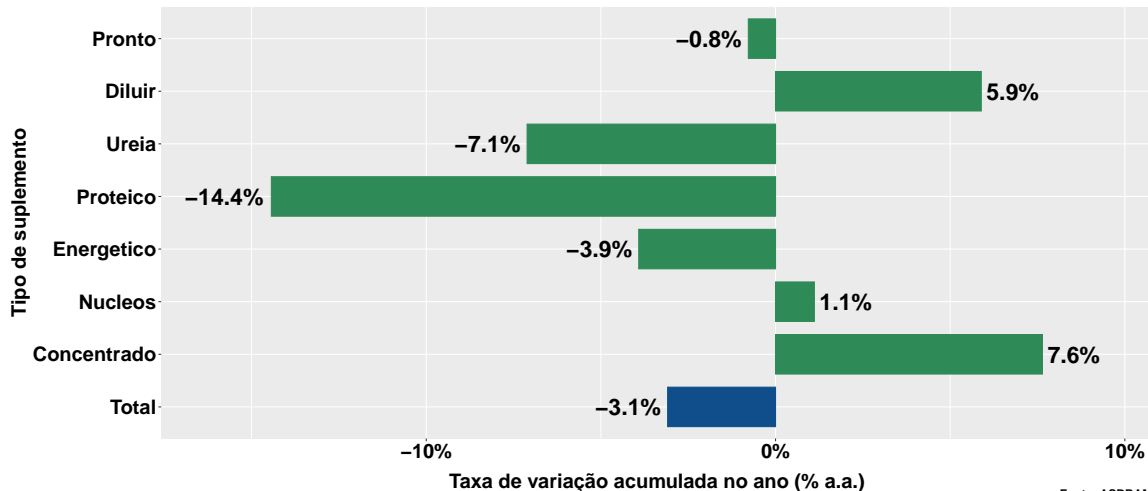
Fonte: ASBRAM

Cenário otimista para o volume de suplementos



Fonte: ASBRAM

Cenário otimista para a var. do volume de suplementos

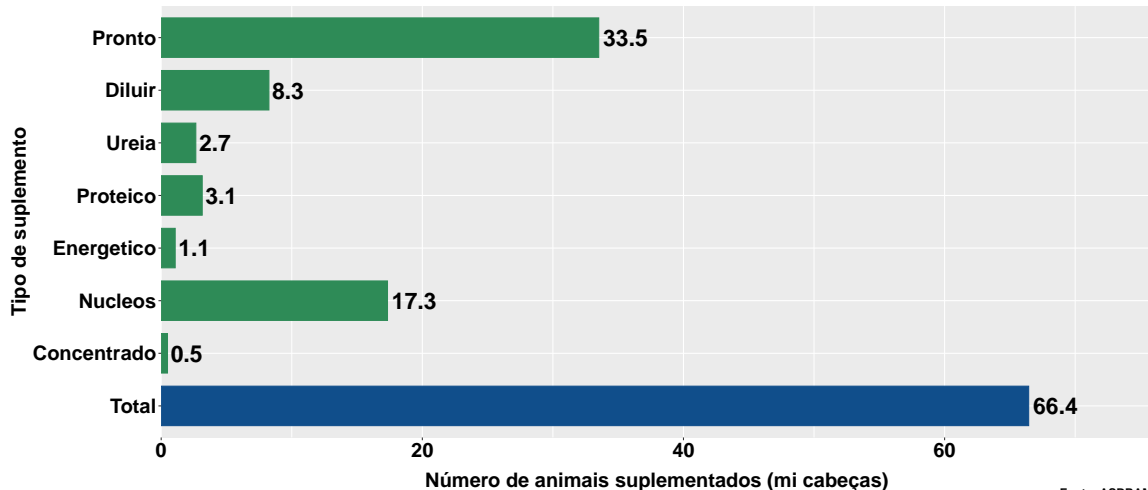


Fonte: ASBRAM

Section 3

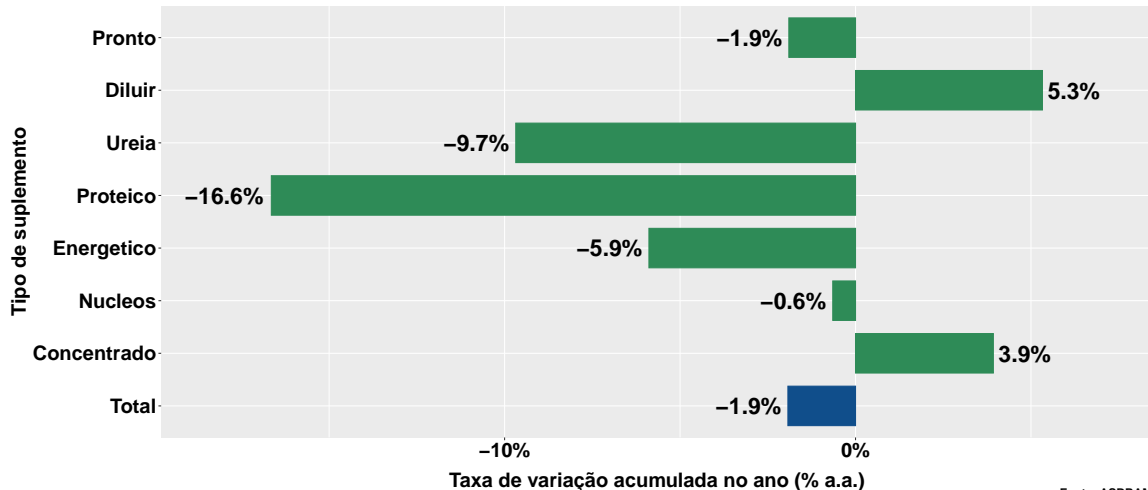
Número de animais suplementados no Brasil

Número médio de animais suplementados no ano



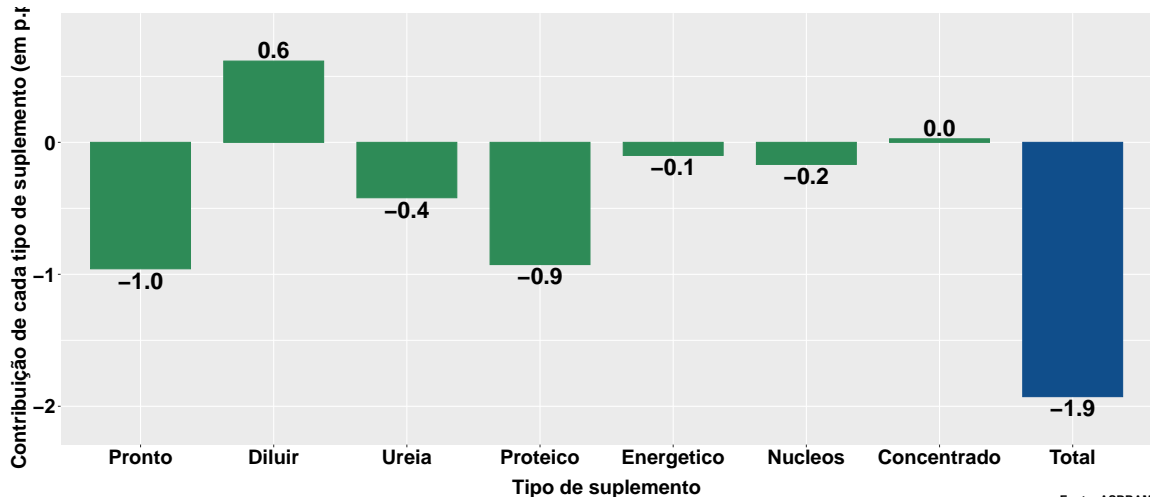
Fonte: ASBRAM

Varição do num. de animais suplementados no ano

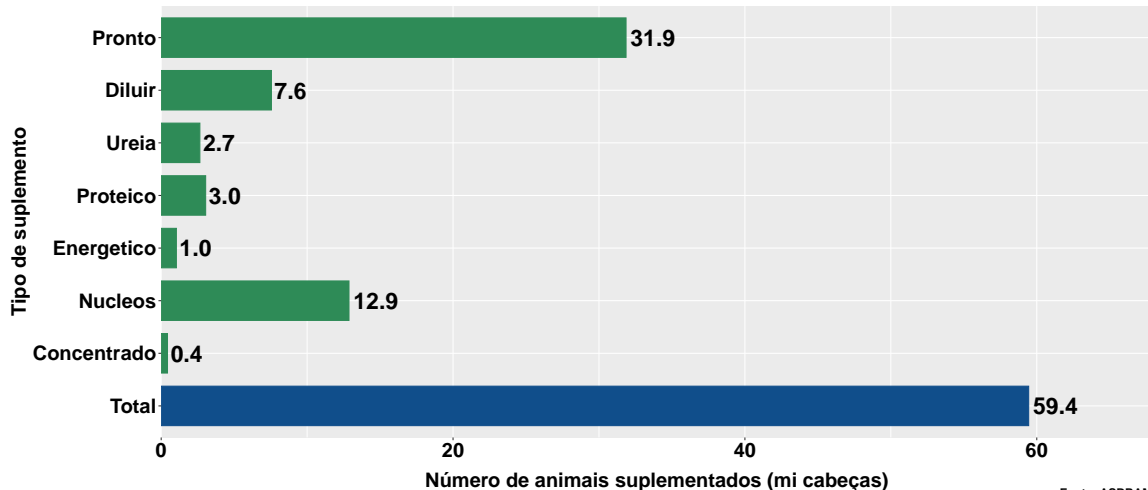


Fonte: ASBRAM

Contribuição de cada suplemento para variação do número de animais suplementados no ano

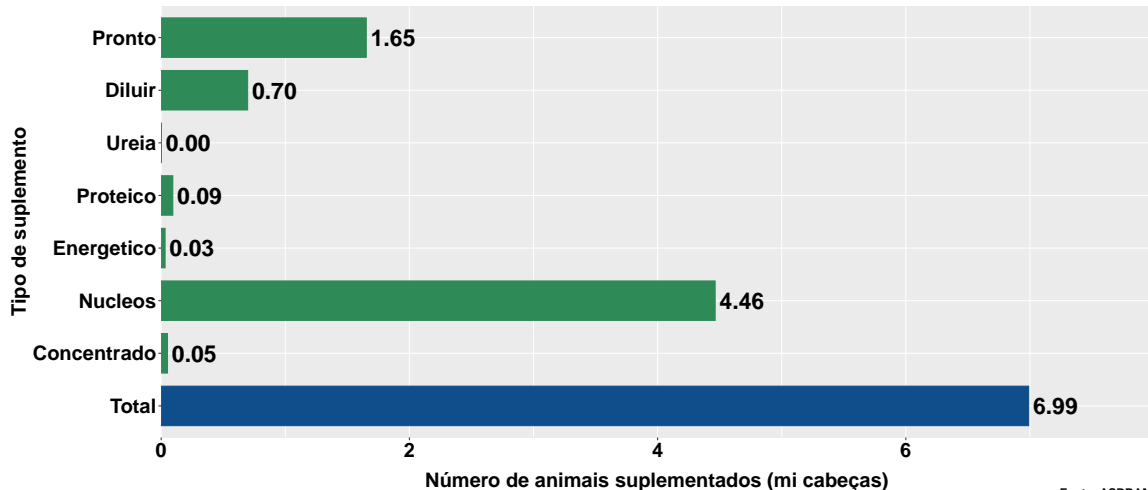


Núm. animais suplementados ano - pecuária corte



Fonte: ASBRAM

Núm. animais suplementados ano - pecuária leite

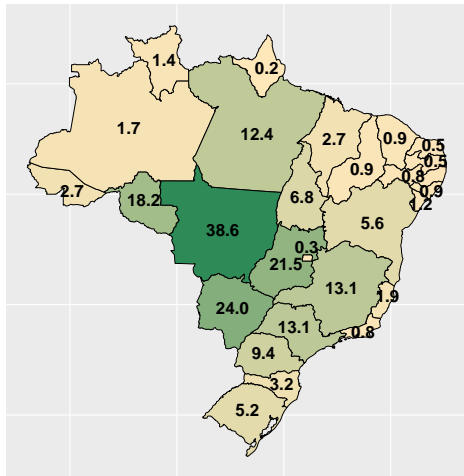


Fonte: ASBRAM

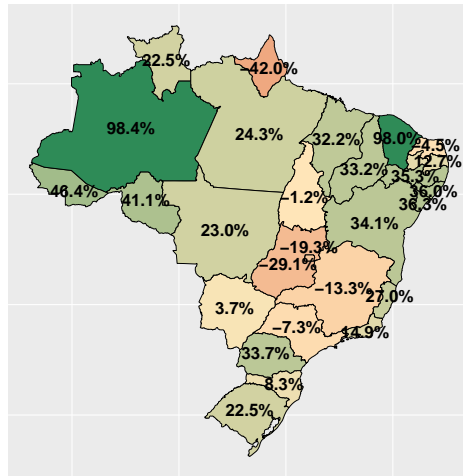
Section 4

Desempenho por Unidade da Federação (UF)

Volume total (e var. interanual) de vendas de suplementos no mês



Mil ton.

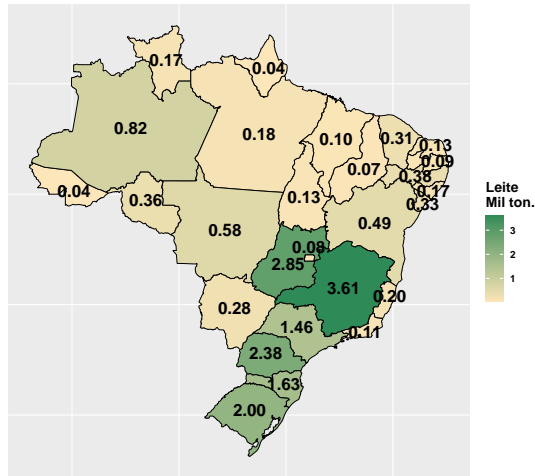
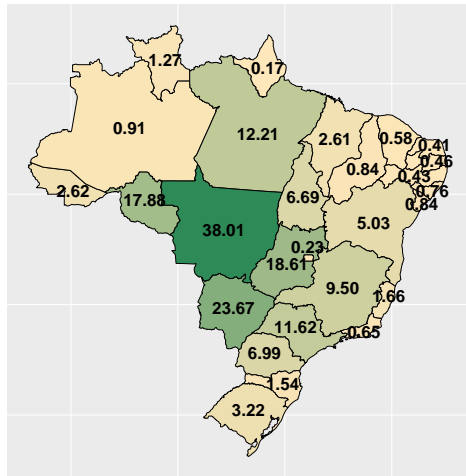


(% a.a.)



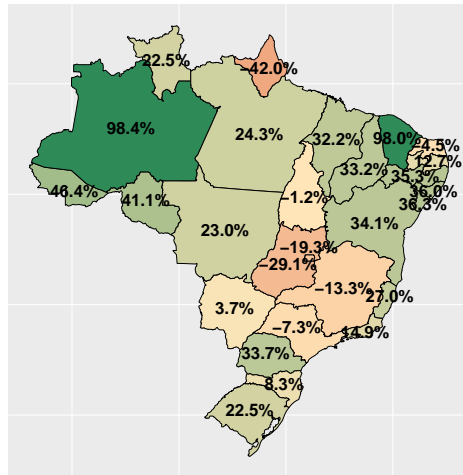
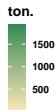
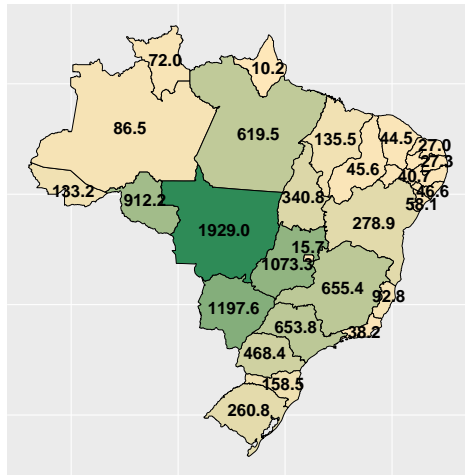
Fonte: ASBRAM

Volume total de vendas de suplementos no mês por tipo pecuária



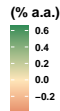
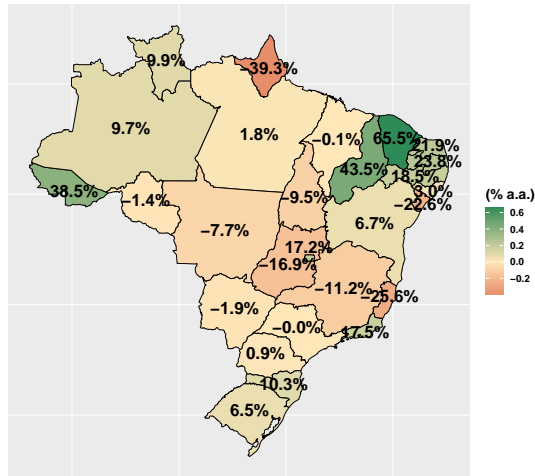
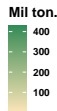
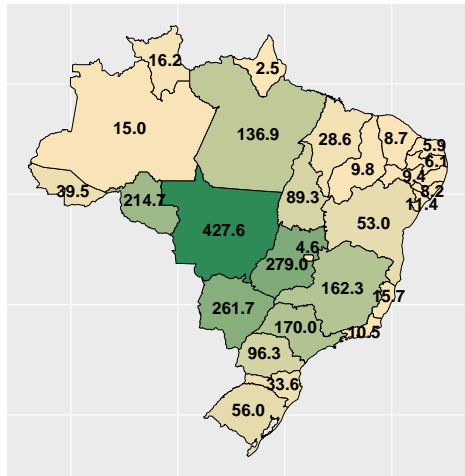
Fonte: ASBRAM

Vol. total (e var. interanual) de vendas no mês por dia útil



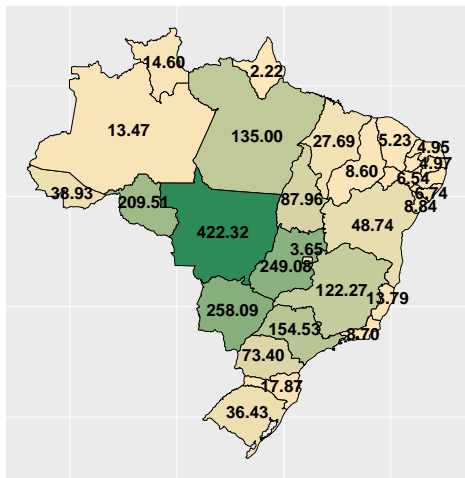
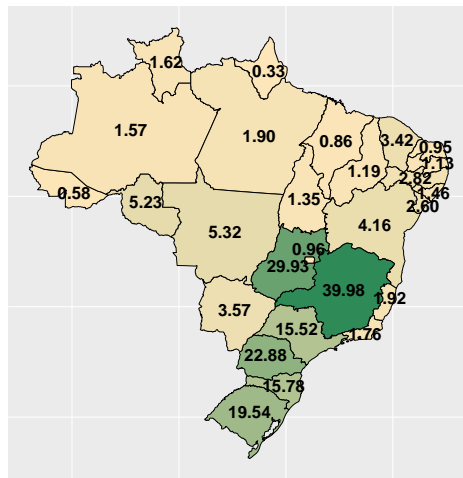
Fonte: ASBRAM

Volume total (e var.) de vendas de suplementos no ano



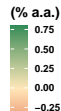
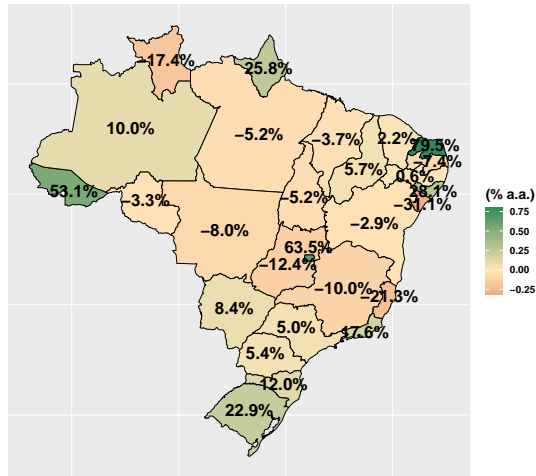
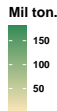
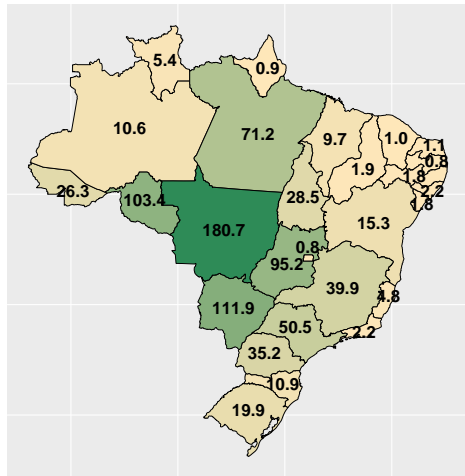
Fonte: ASBRAM

Volume total de vendas de suplementos no ano por tipo de pecuária

Corte
Mil ton.Leite
Mil ton.

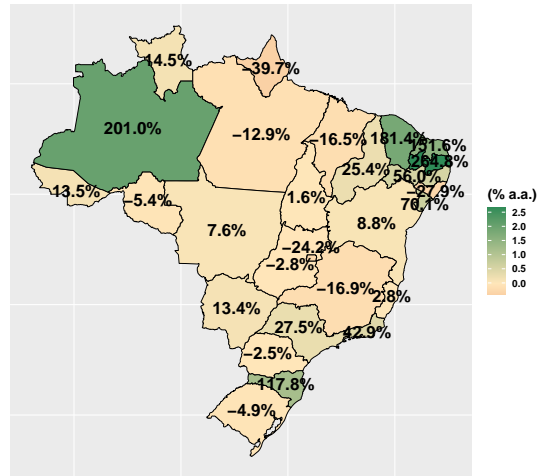
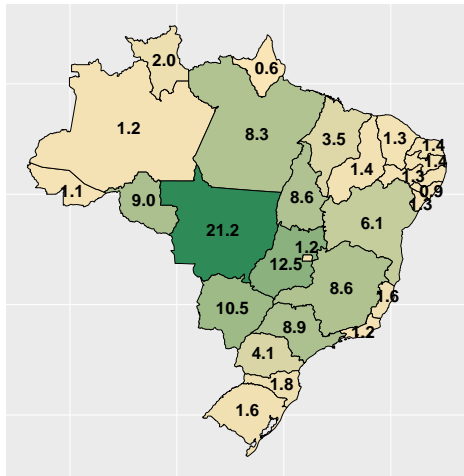
Fonte: ASBRAM

Vol. (e var.) de vendas no ano: Pronto para uso



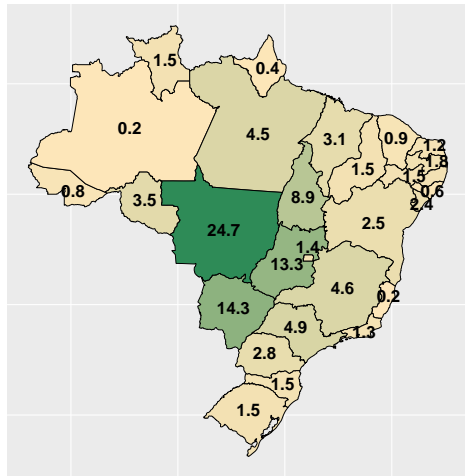
Fonte: ASBRAM

Vol. (e var.) de vendas no ano: Para diluir

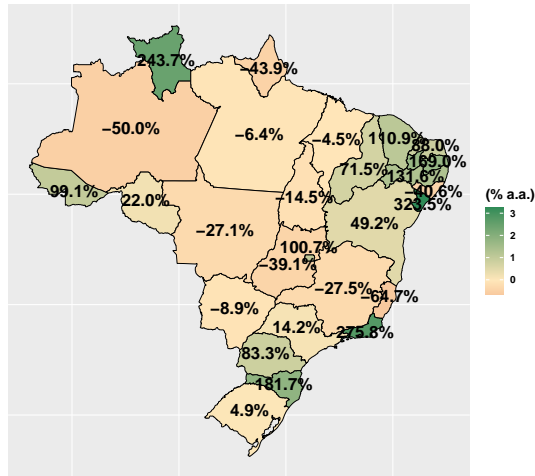


Fonte: ASBRAM

Vol. (e var.) de vendas no ano: Ureia



Mil ton.

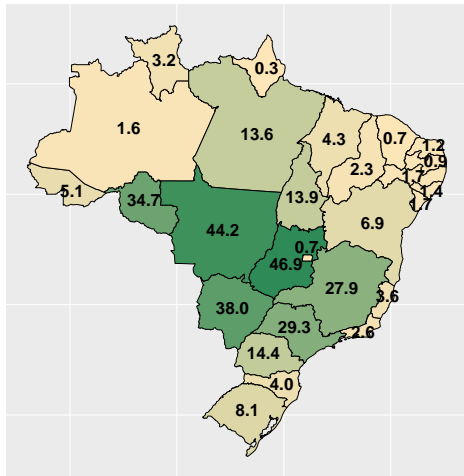


(% a.a.)



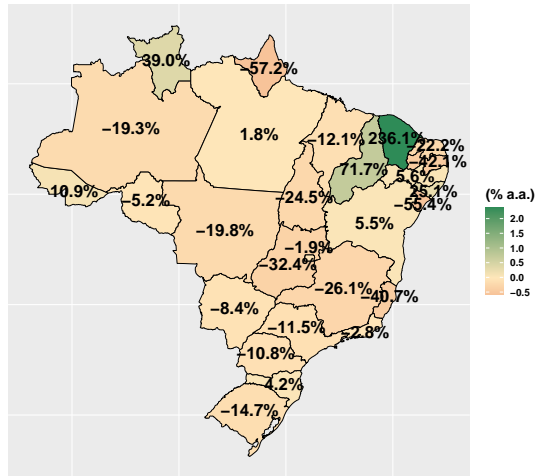
Fonte: ASBRAM

Vol. (e var.) de vendas no ano: Proteico



Mil ton.

40
30
20
10

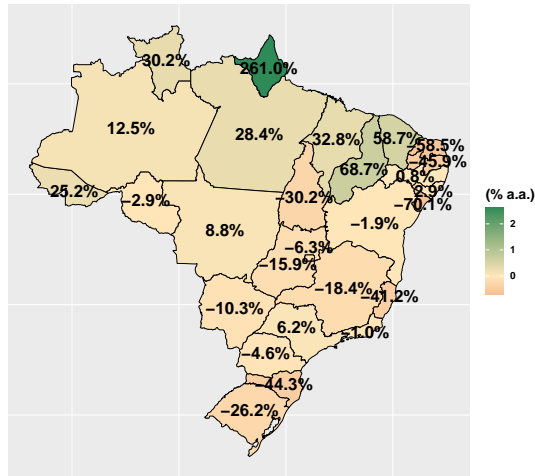
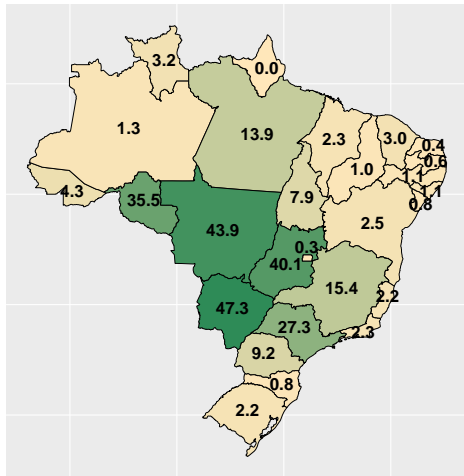


(% a.a.)

2.0
1.5
1.0
0.5
0.0
-0.5

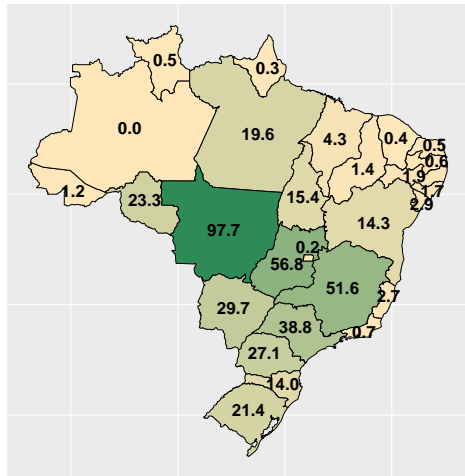
Fonte: ASBRAM

Vol. (e var.) de vendas no ano: Prot. energético

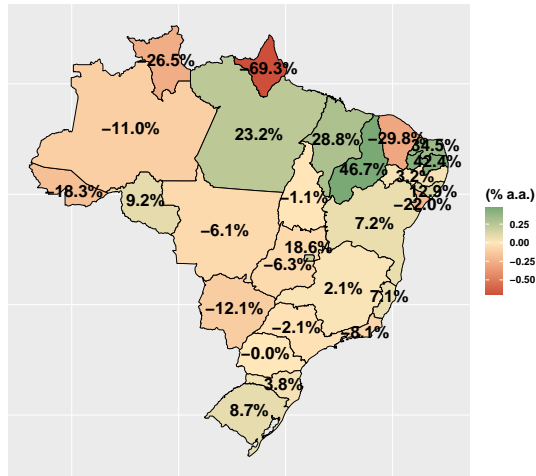


Fonte: ASBRAM

Vol. (e var.) de vendas no ano: Núcleos



Mil ton.

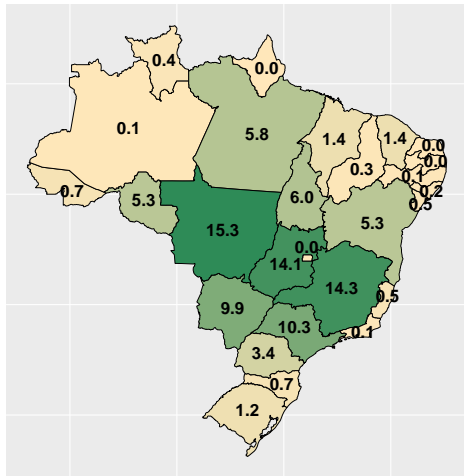


(% a.a.)

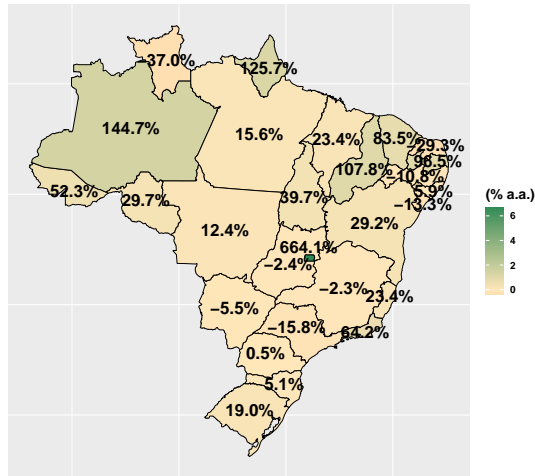


Fonte: ASBRAM

Vol. (e var.) de vendas no ano: Concentrado



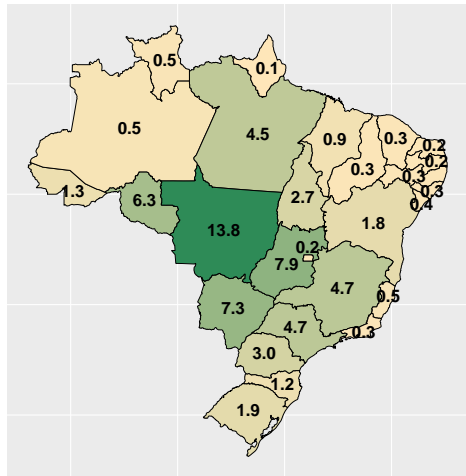
Mil ton.
15
10
5



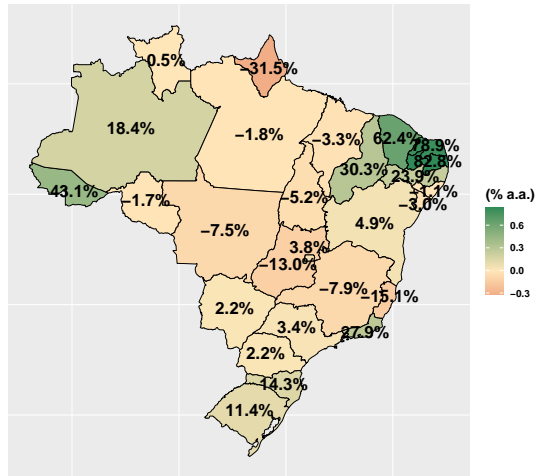
(% a.a.)
6
4
2
0

Fonte: ASBRAM

Número médio (e var.) de animais suplementados no ano



Mi cab.

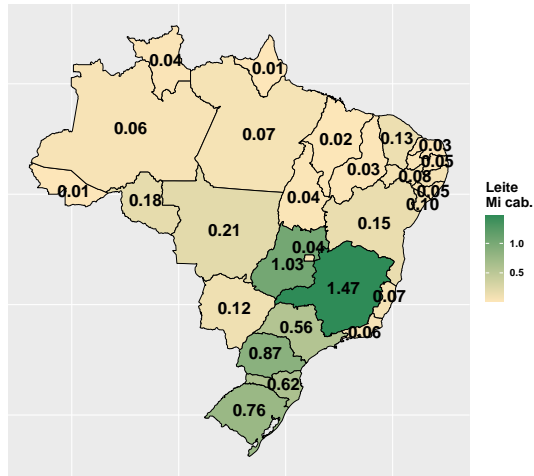
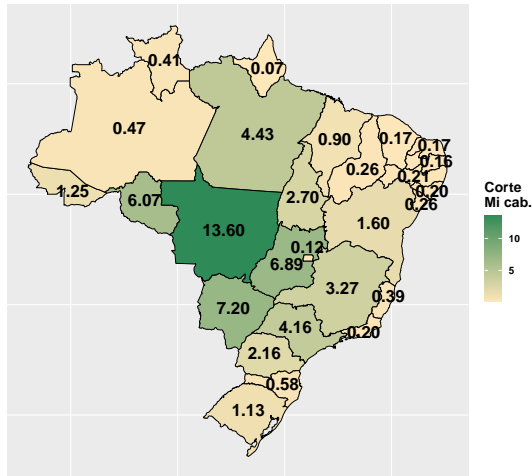


(% a.a.)



Fonte: ASBRAM

Número de animais suplementados no ano por tipo de pecuária



Fonte: ASBRAM