

Índice ASBRAM

Desempenho Outubro/2023

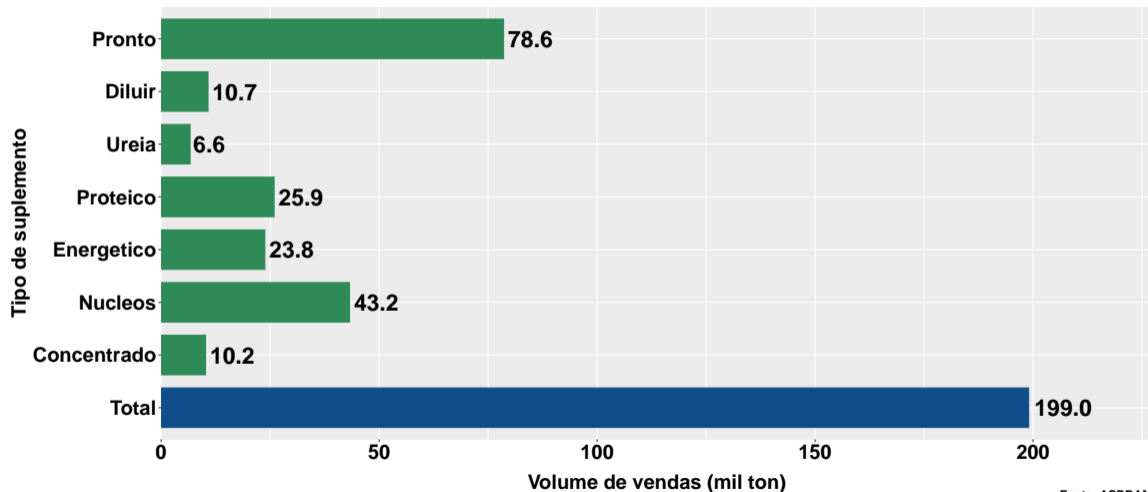
Campinas, 23/11/2023

- 1 Volume de vendas de suplementos no Brasil
- 2 Projeções para o final de 2023
- 3 Número de animais suplementados no Brasil
- 4 Desempenho por Unidade da Federação (UF)

Section 1

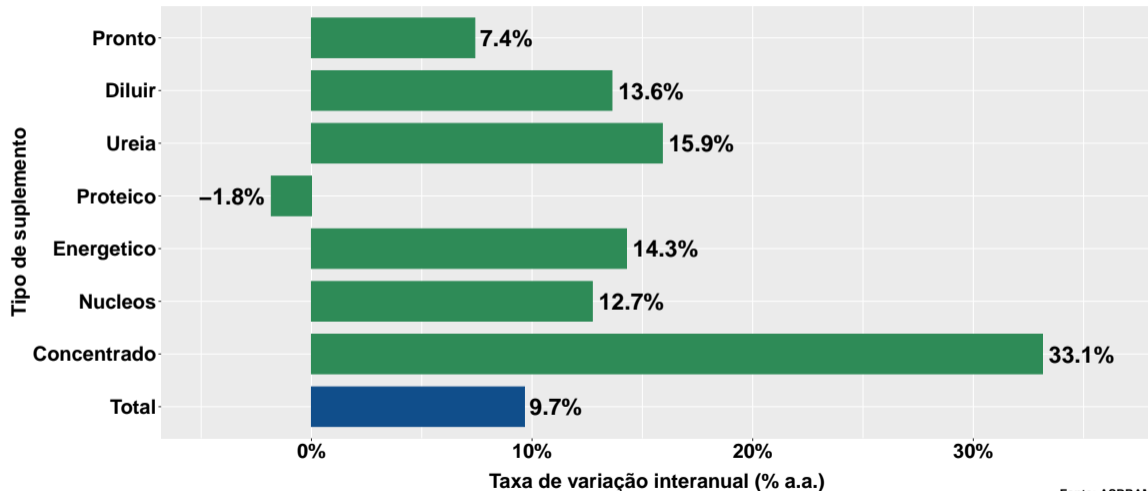
Volume de vendas de suplementos no Brasil

Volume de vendas no mês



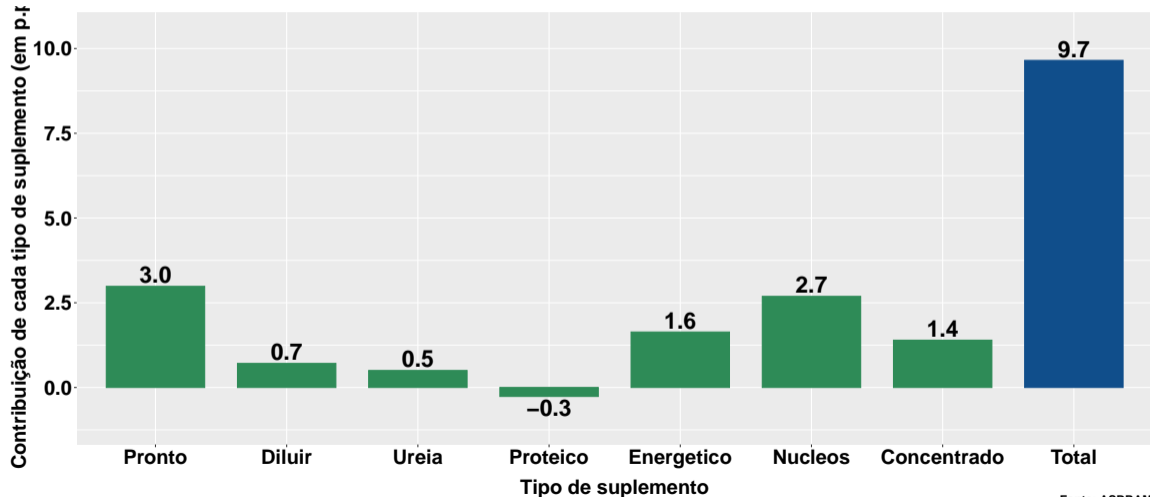
Fonte: ASBRAM

Variação interanual do volume de vendas

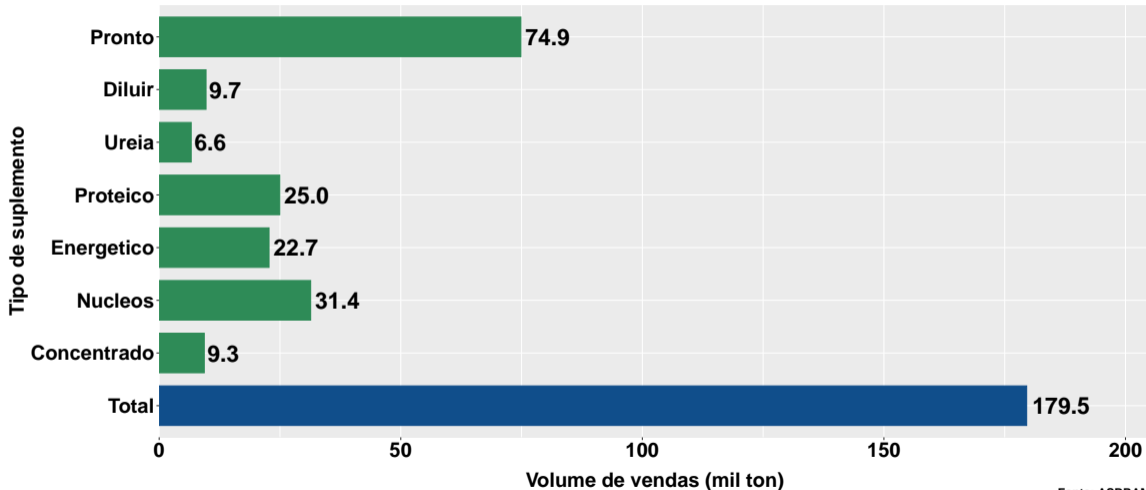


Fonte: ASBRAM

Contribuição de cada suplemento para variação interanual do volume de vendas

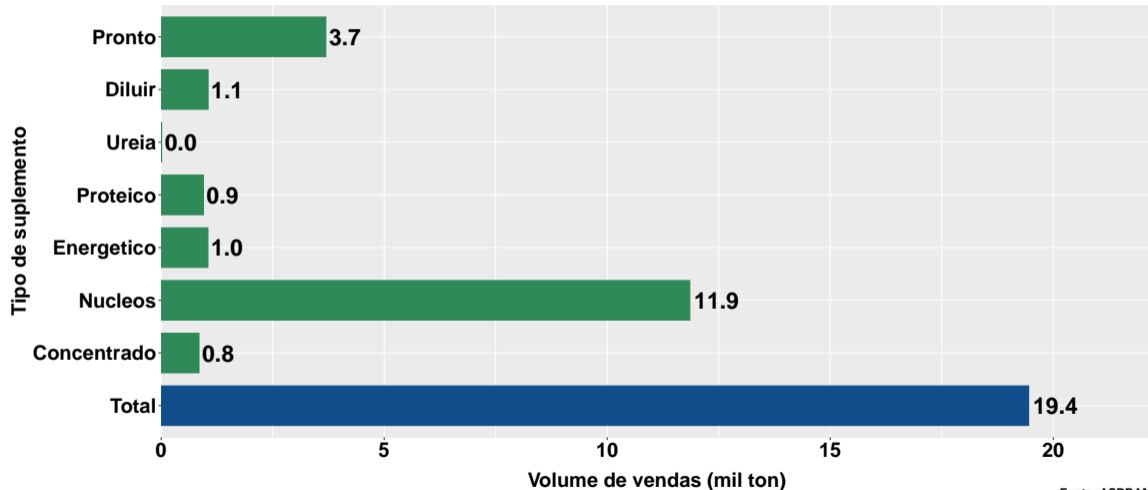


Volume de vendas no mês - pecuária corte



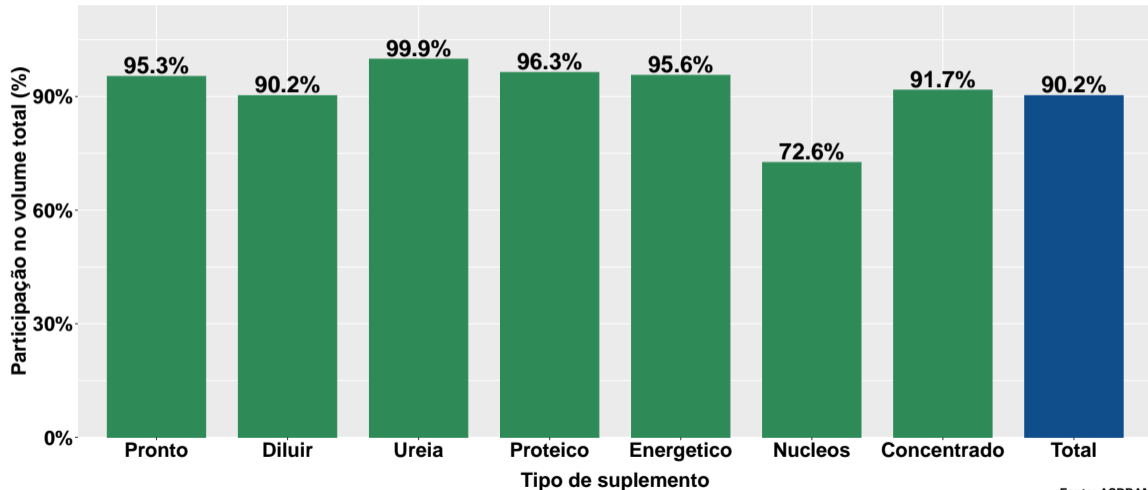
Fonte: ASBRAM

Volume de vendas no mês - pecuária leite



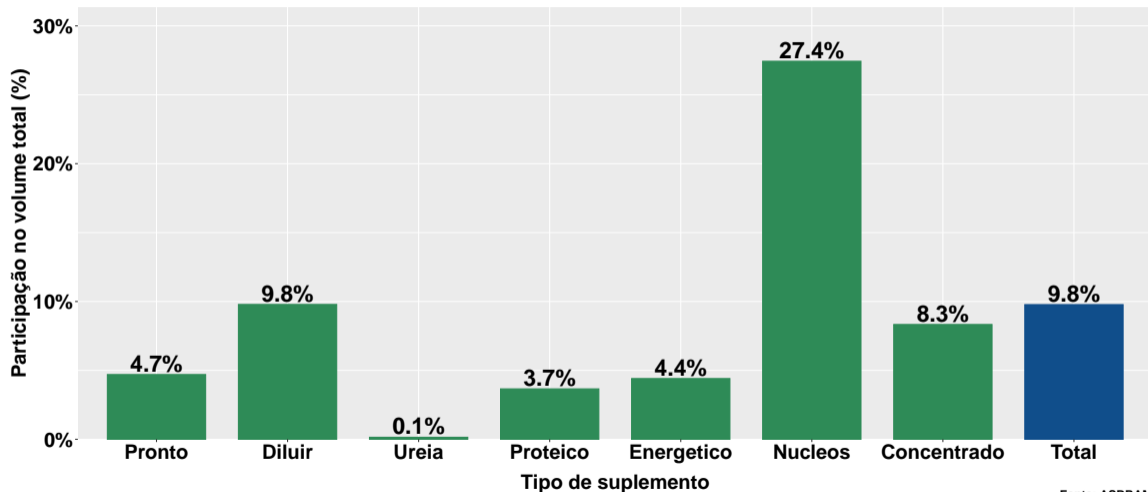
Fonte: ASBRAM

Part. pecuária corte no volume total - no mês



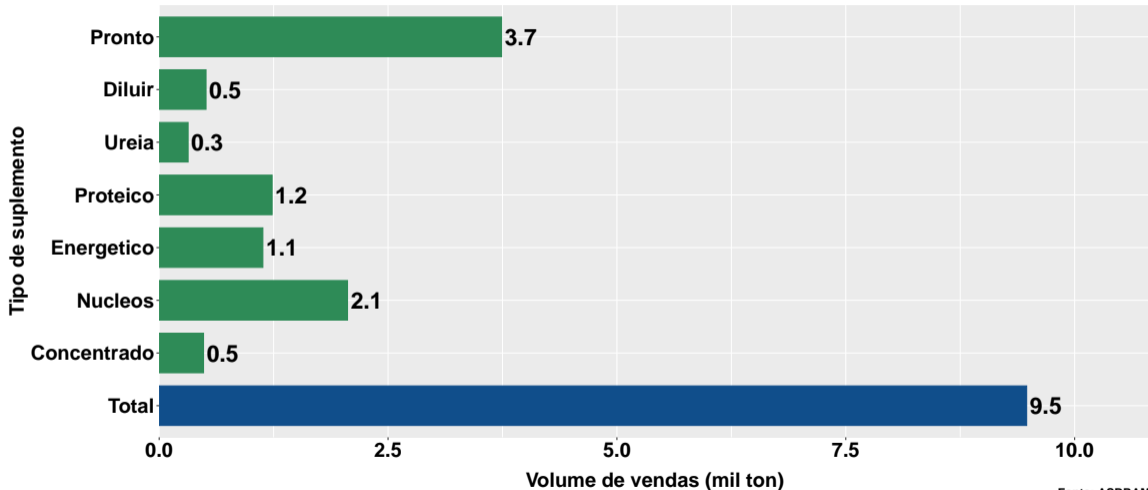
Fonte: ASBRAM

Part. pecuária leite no volume total - no mês



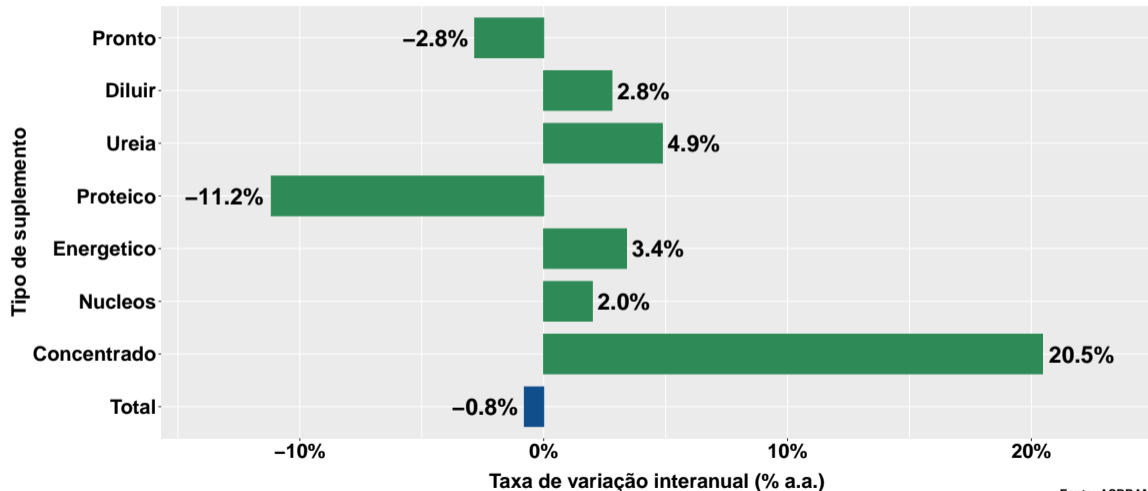
Fonte: ASBRAM

Volume de vendas no mês por dia útil



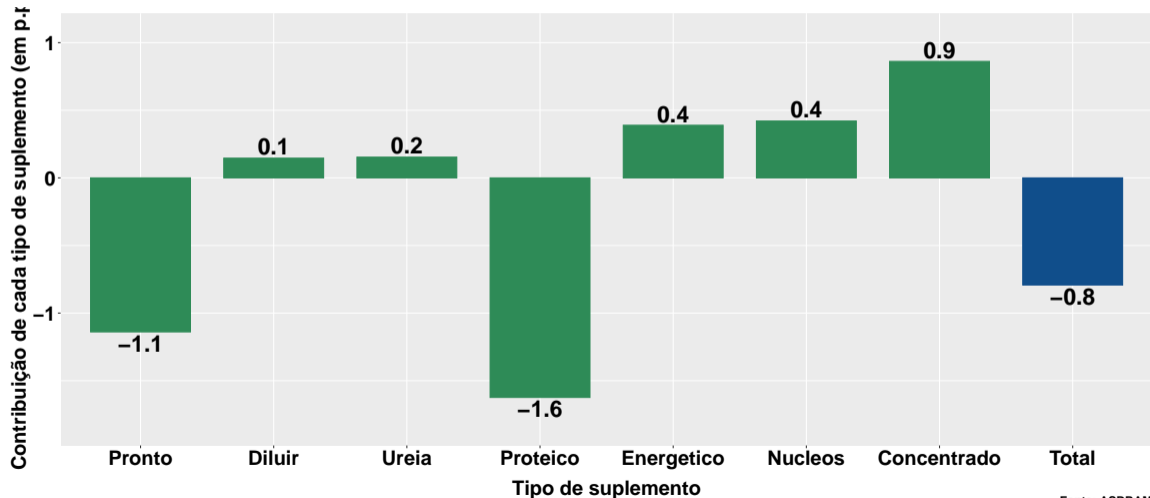
Fonte: ASBRAM

Variação interanual do volume de vendas por dia útil

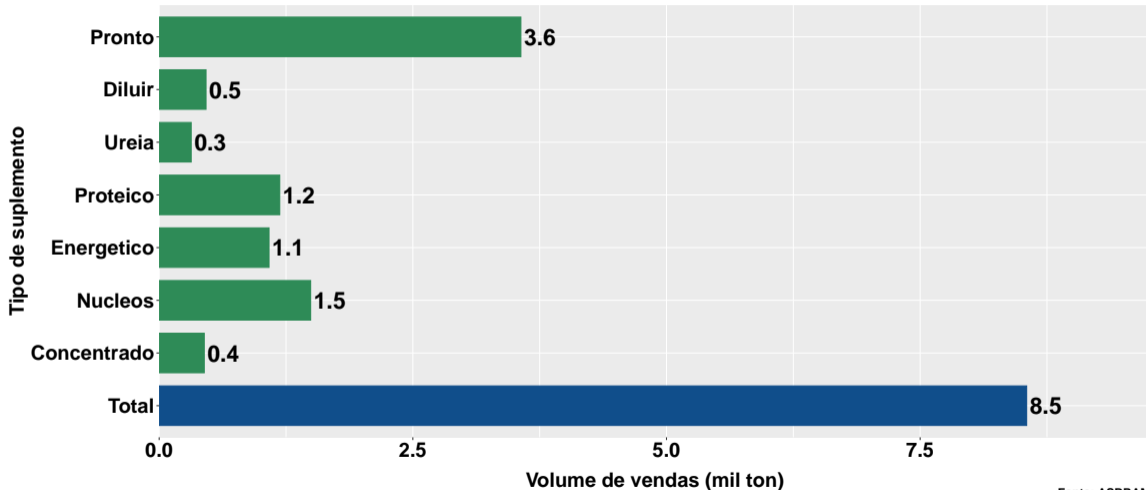


Fonte: ASBRAM

Contribuição de cada suplemento para variação interanual do volume de vendas por dia útil

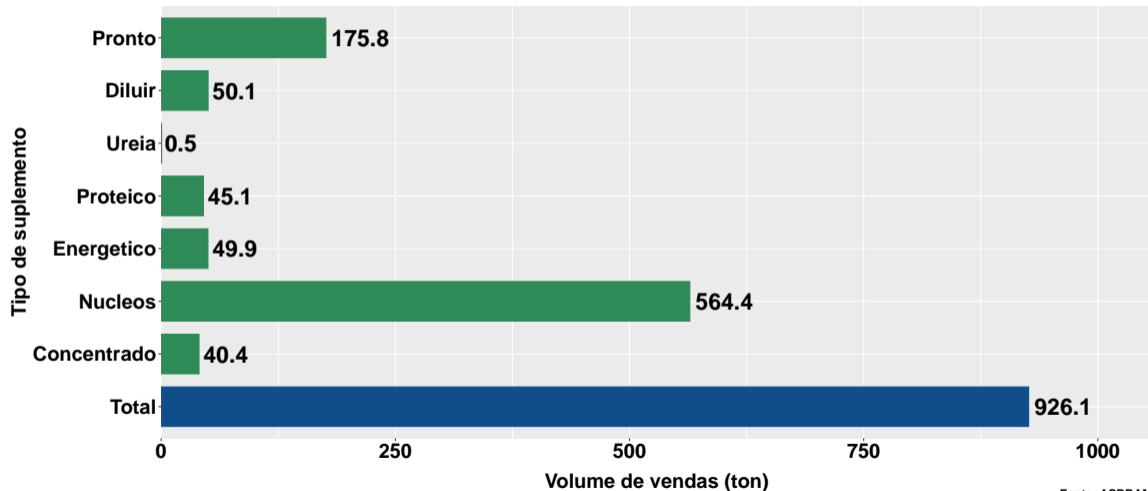


Volume de vendas dia útil - pecuária corte



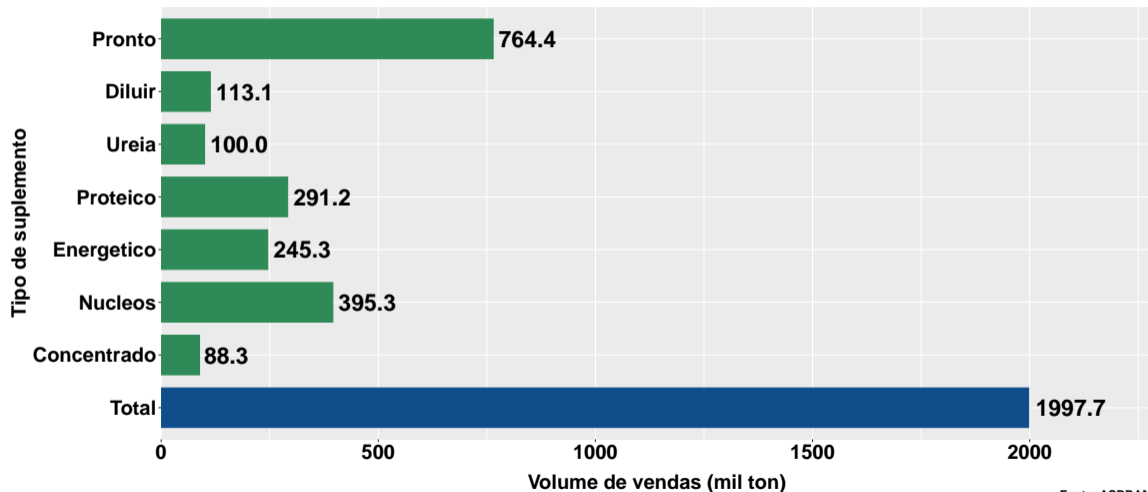
Fonte: ASBRAM

Volume de vendas dia útil - pecuária leite



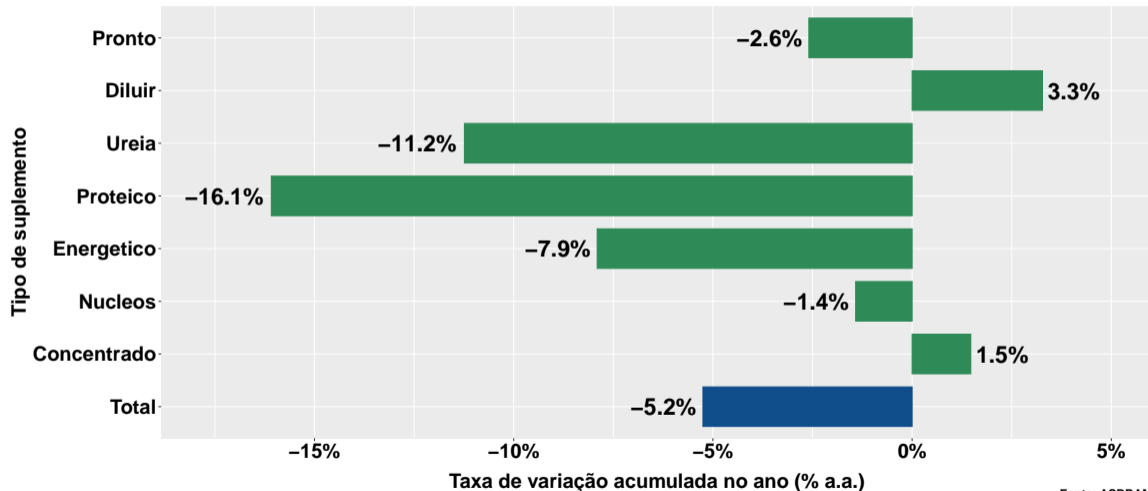
Fonte: ASBRAM

Volume de vendas acumulado no ano



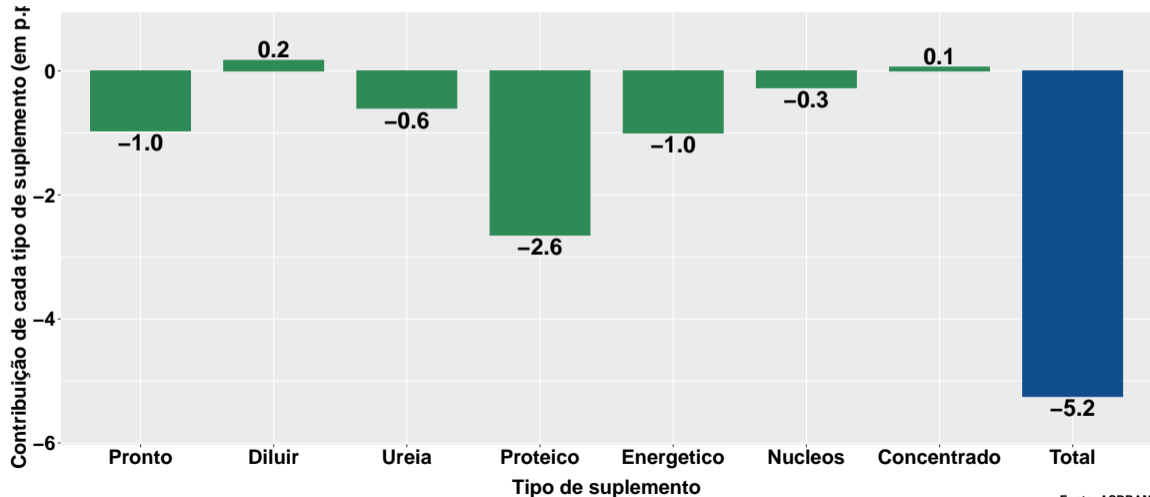
Fonte: ASBRAM

Variação do volume de vendas acumulado no ano

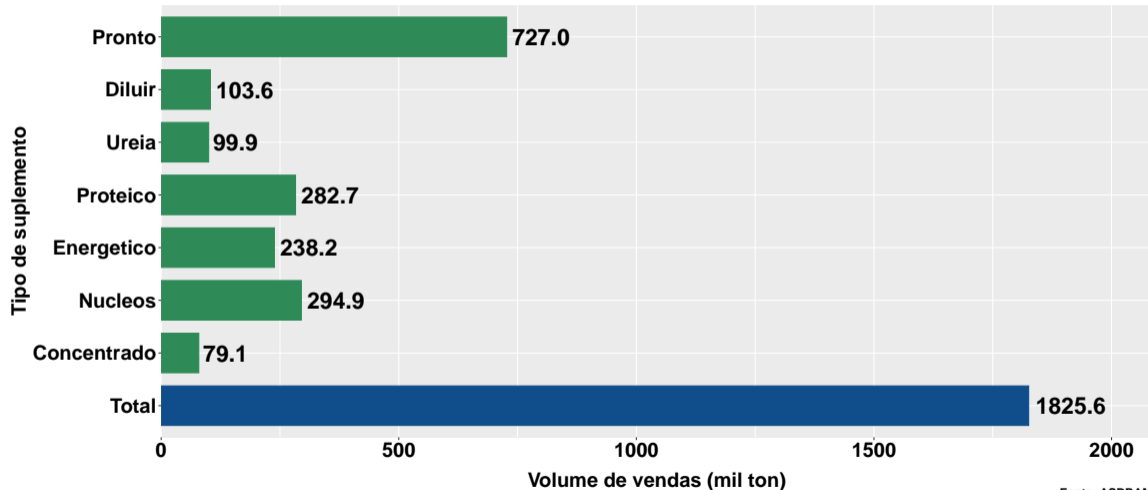


Fonte: ASBRAM

Contribuição de cada suplemento para variação do volume de vendas acumulado no ano

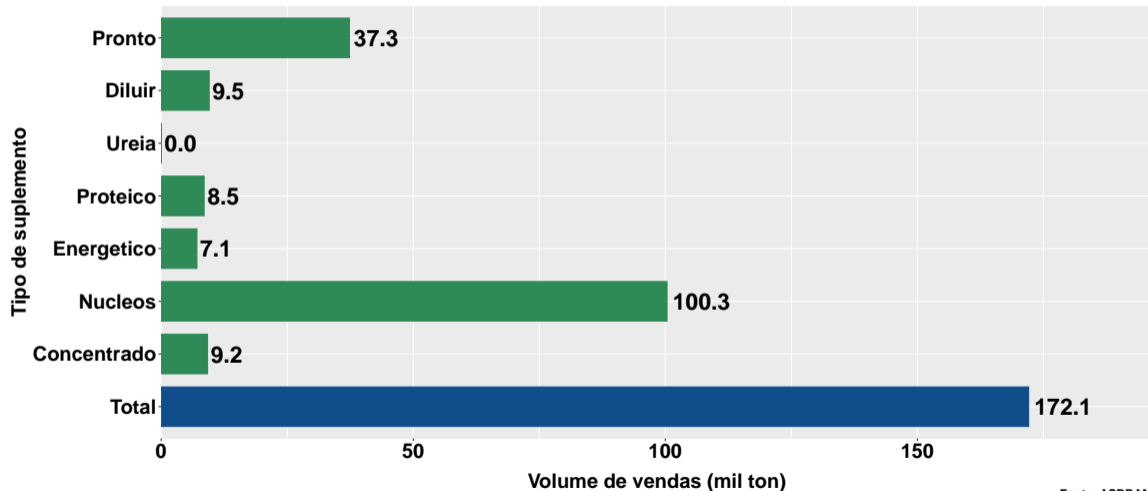


Volume acumulado no ano - pecuária corte



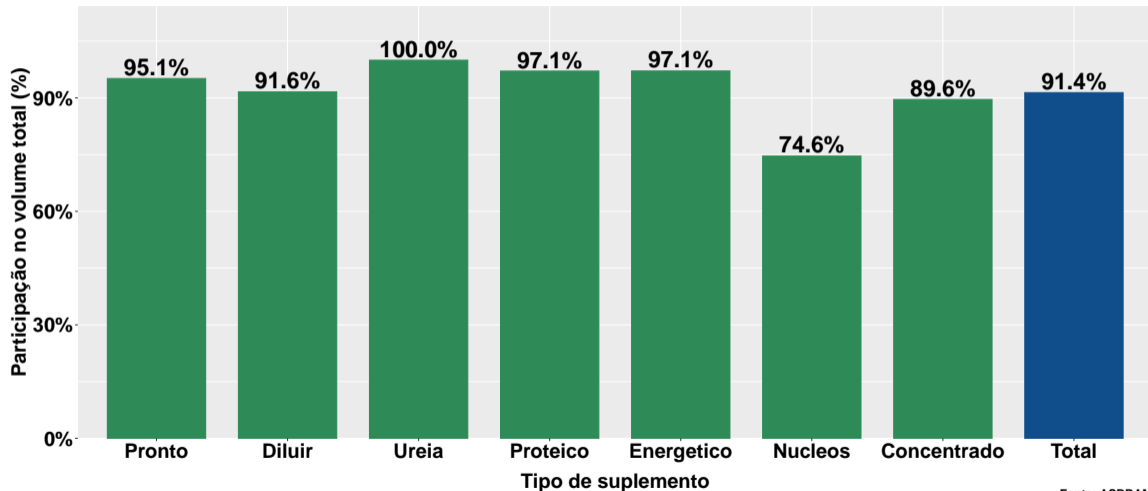
Fonte: ASBRAM

Volume acumulado no ano - pecuária leite



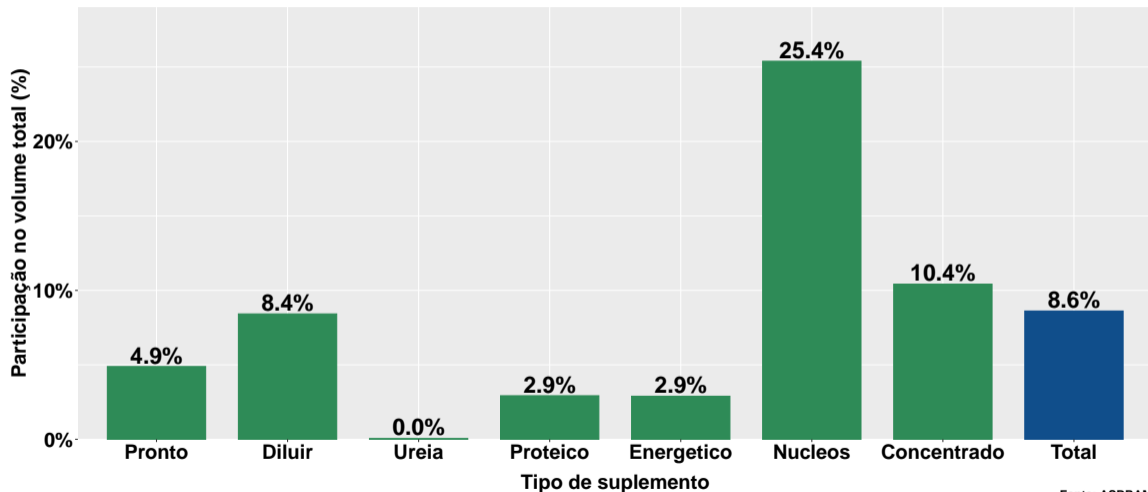
Fonte: ASBRAM

Part. pecuária corte no volume total - no ano



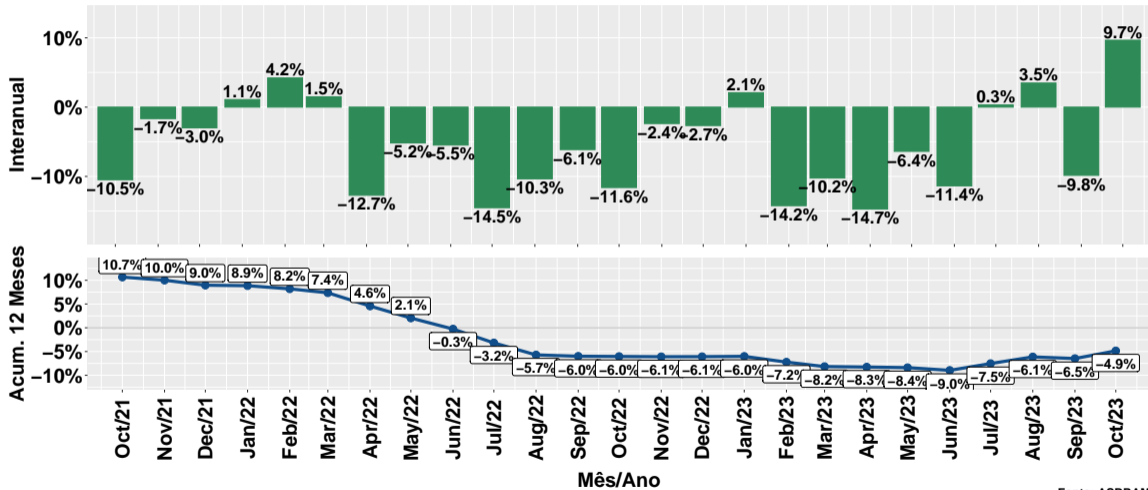
Fonte: ASBRAM

Part. pecuária leite no volume total - no ano



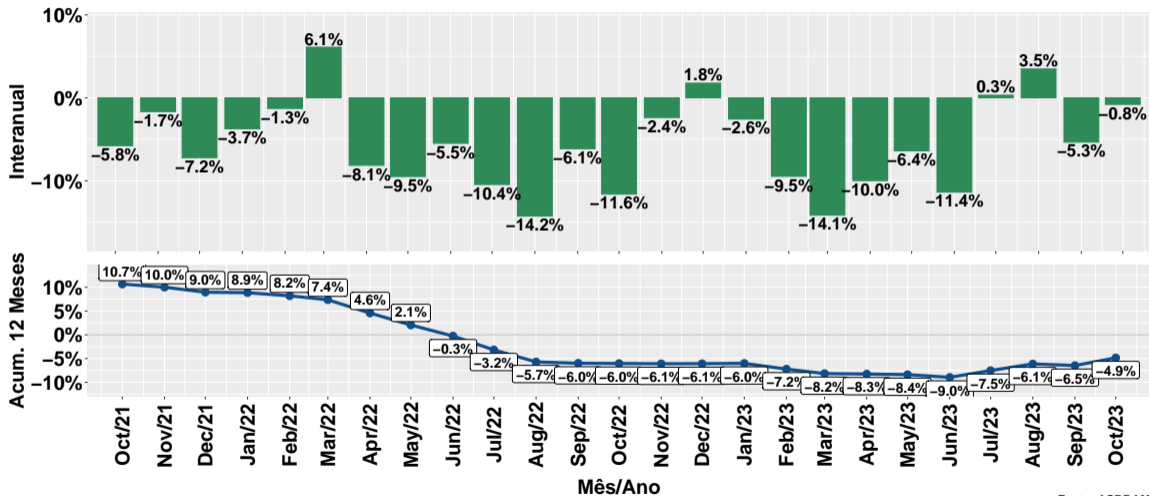
Fonte: ASBRAM

Evolução do volume total de vendas



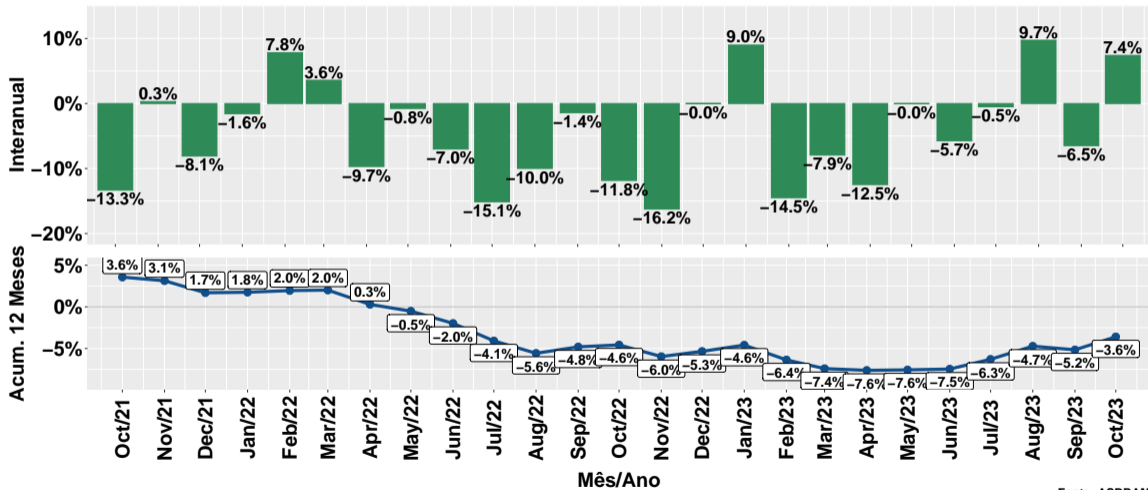
Fonte: ASBRAM

Evolução do volume total de vendas por dia útil



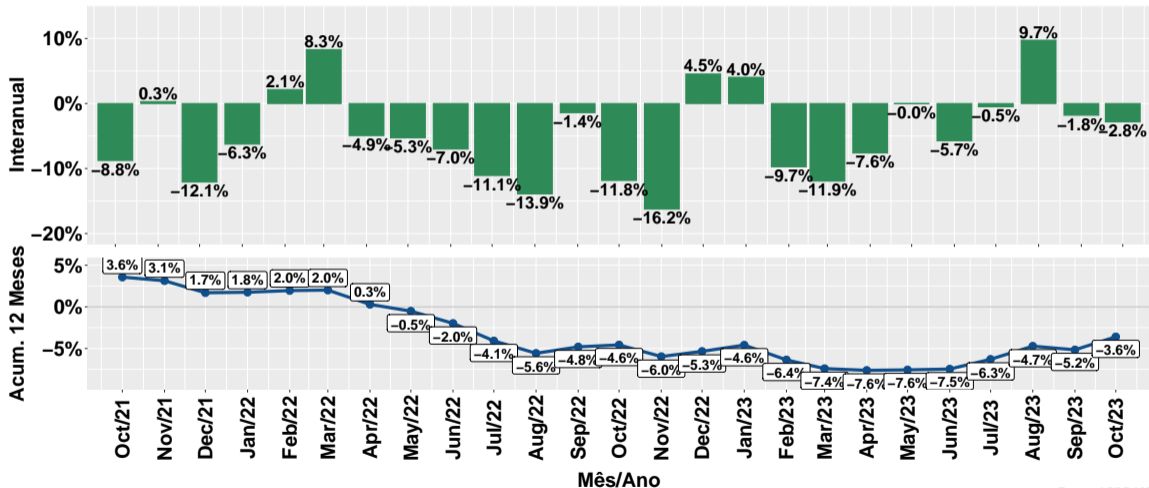
Fonte: ASBRAM

Evolução do volume de vendas: Pronto para uso



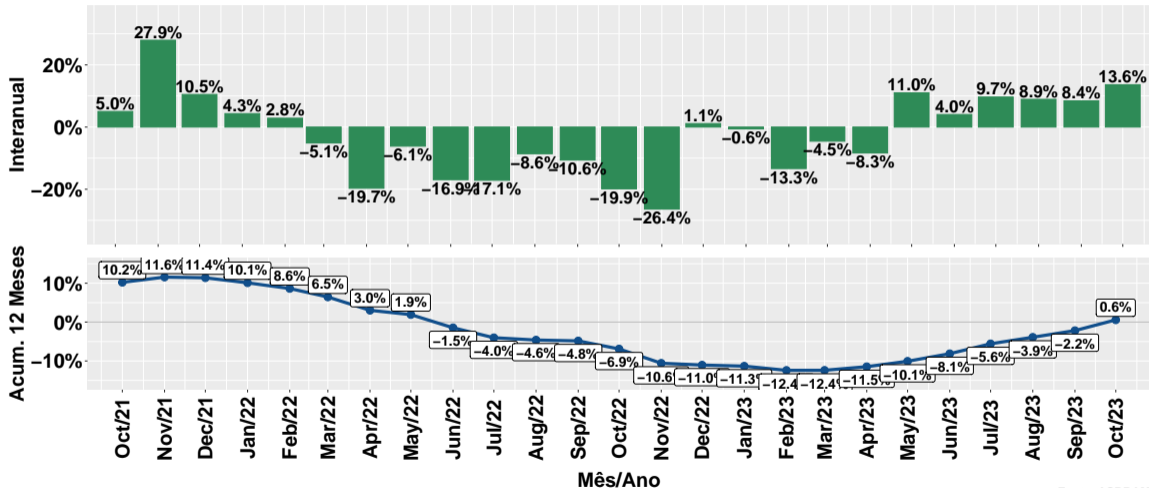
Fonte: ASBRAM

Evolução do volume de vendas por dia útil: Pronto para uso



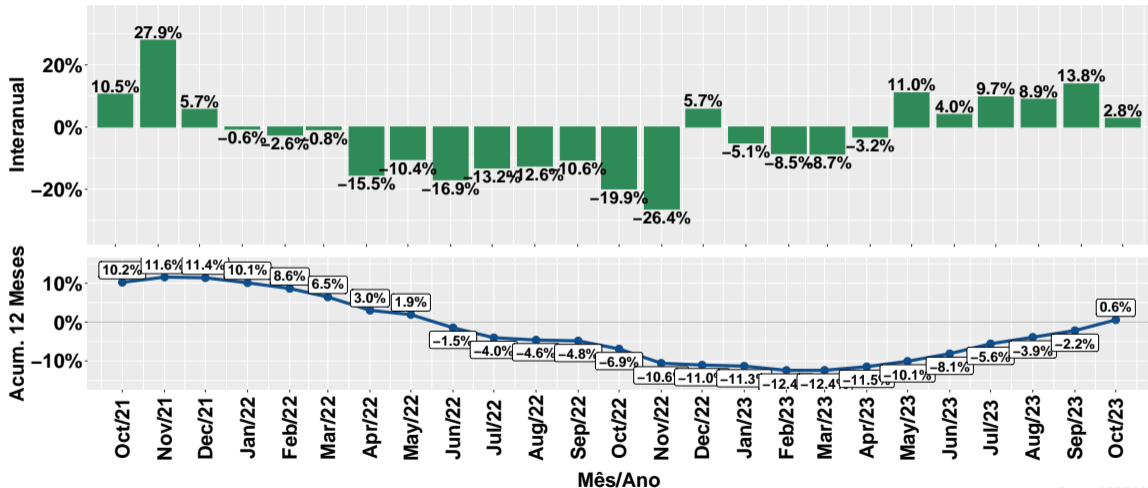
Fonte: ASBRAM

Evolução do volume de vendas: Para diluir



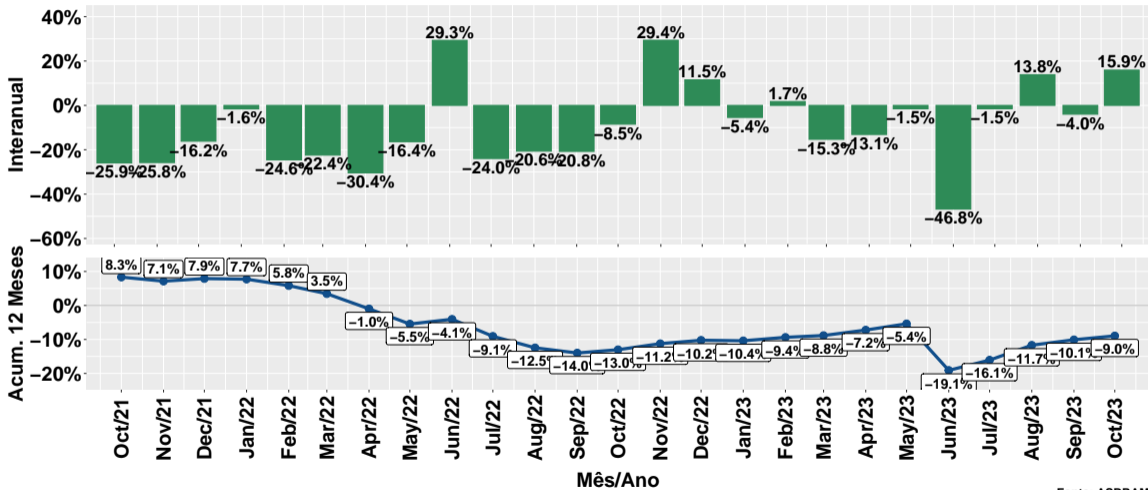
Fonte: ASBRAM

Evolução do volume de vendas por dia útil: Para diluir



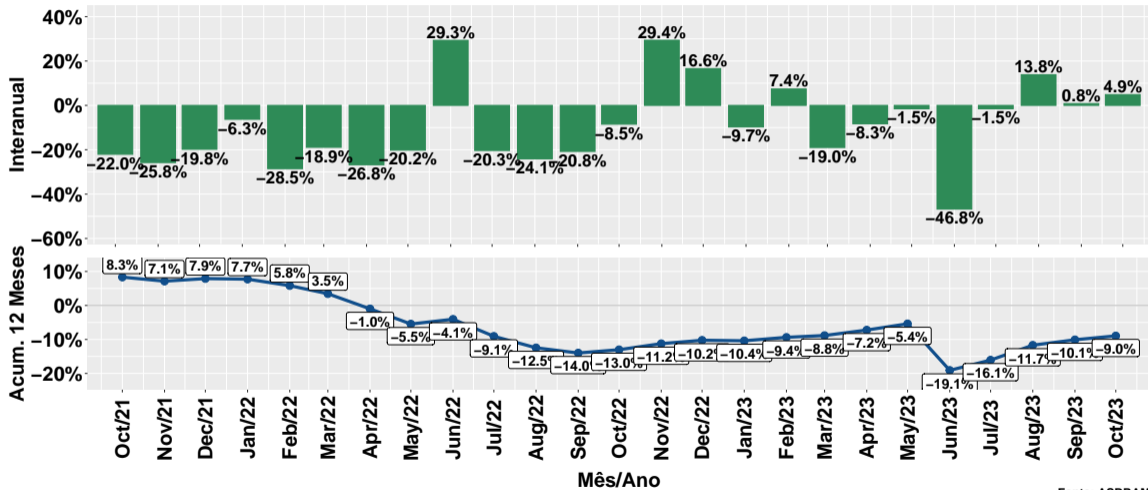
Fonte: ASBRAM

Evolução do volume de vendas: Ureia



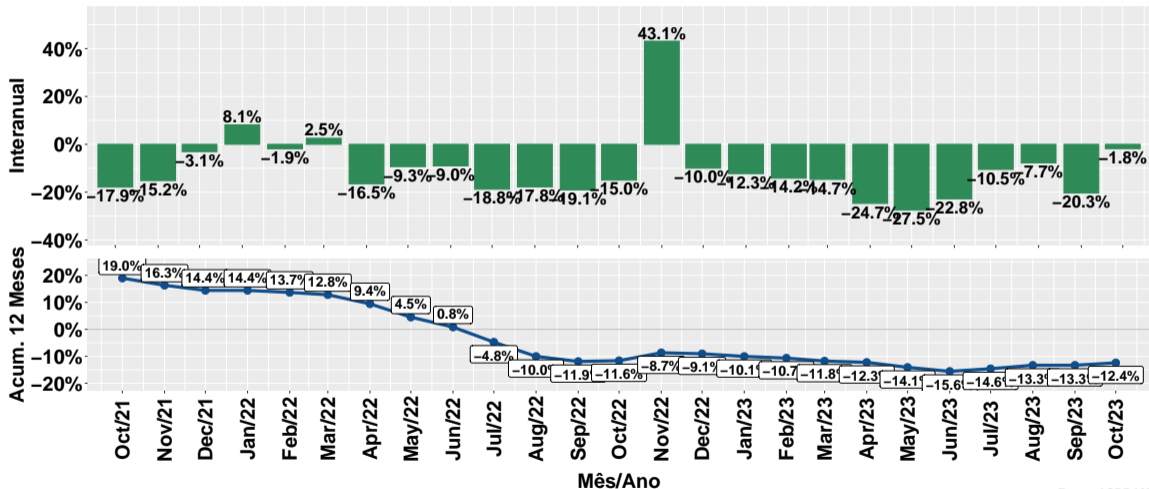
Fonte: ASBRAM

Evolução do volume de vendas por dia útil: Ureia



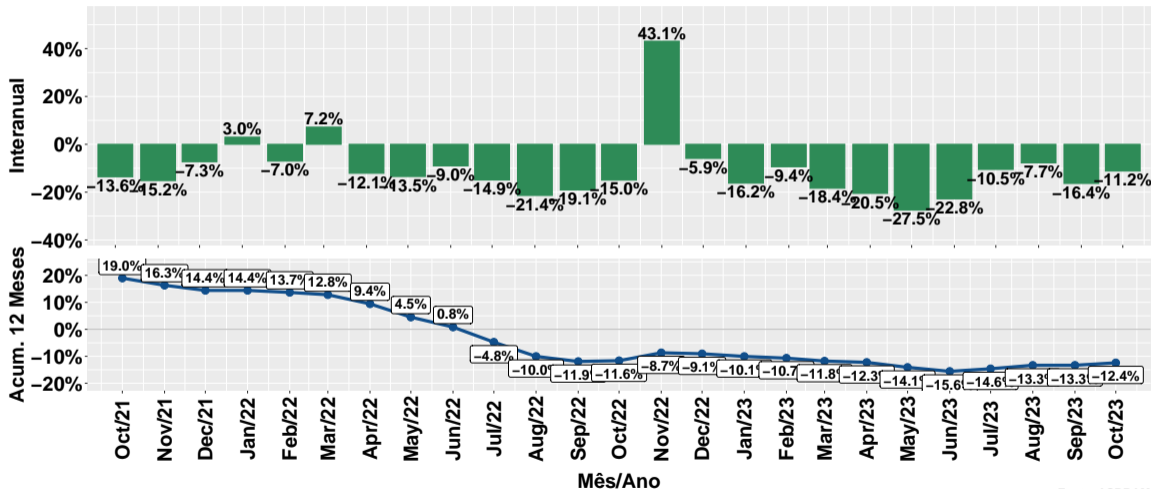
Fonte: ASBRAM

Evolução do volume de vendas: Proteico



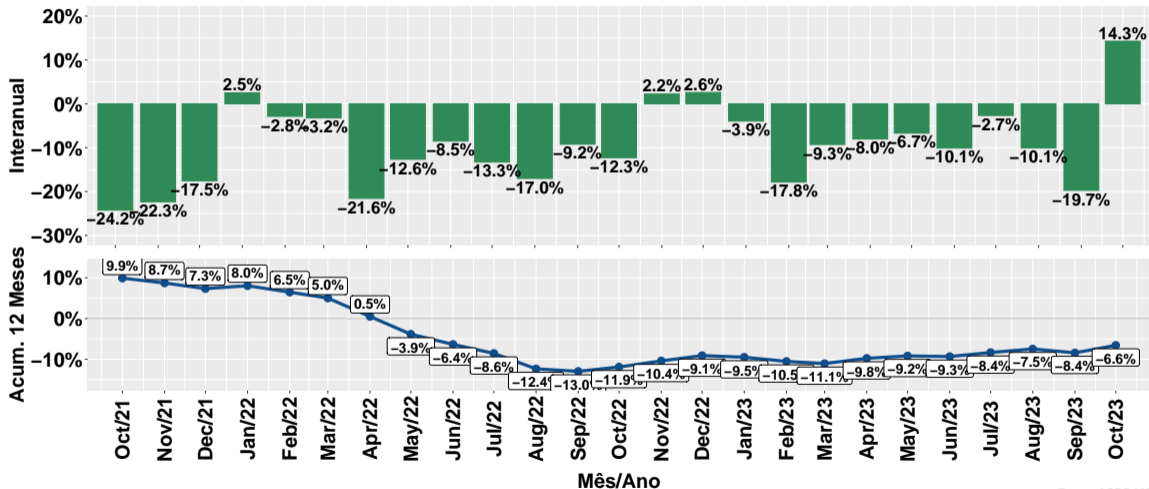
Fonte: ASBRAM

Evolução do volume de vendas por dia útil: Proteico



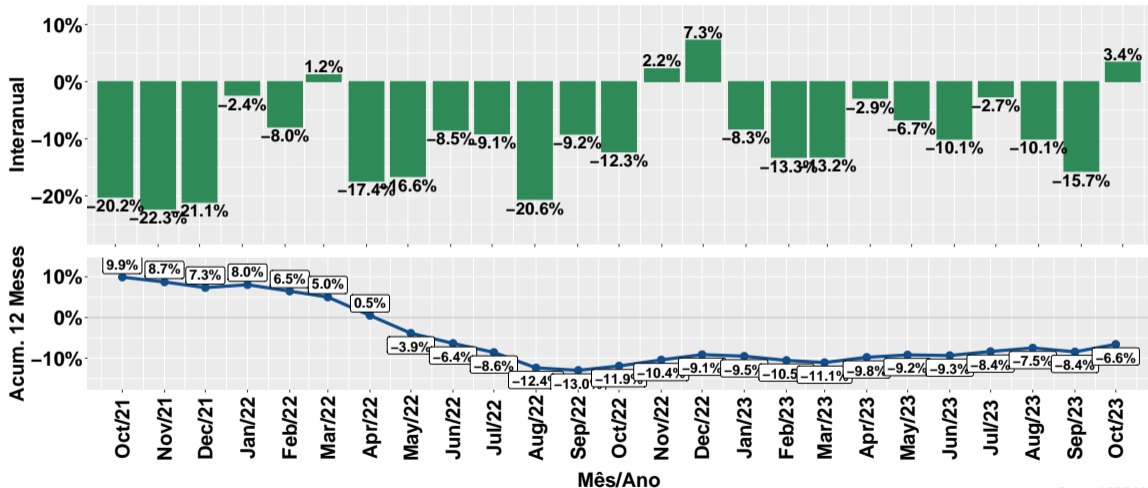
Fonte: ASBRAM

Evolução do volume de vendas: Prot. energético



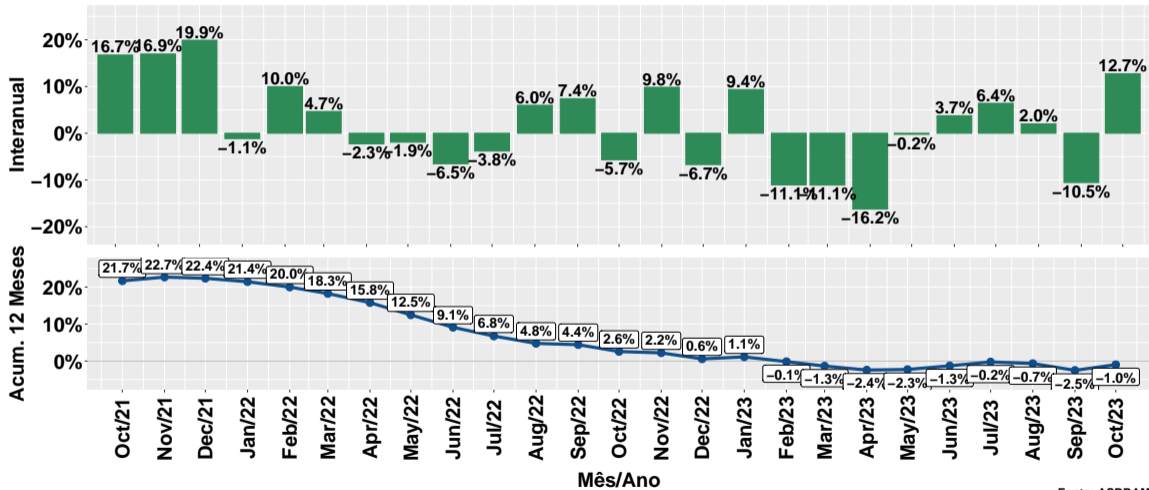
Fonte: ASBRAM

Evolução do volume de vendas por dia útil: Prot. energético



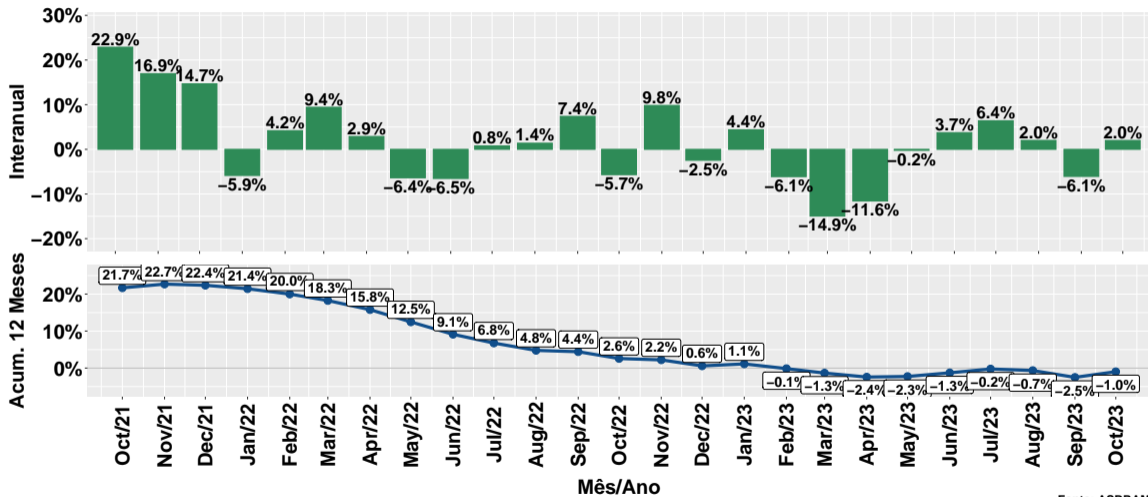
Fonte: ASBRAM

Evolução do volume de vendas: Núcleos



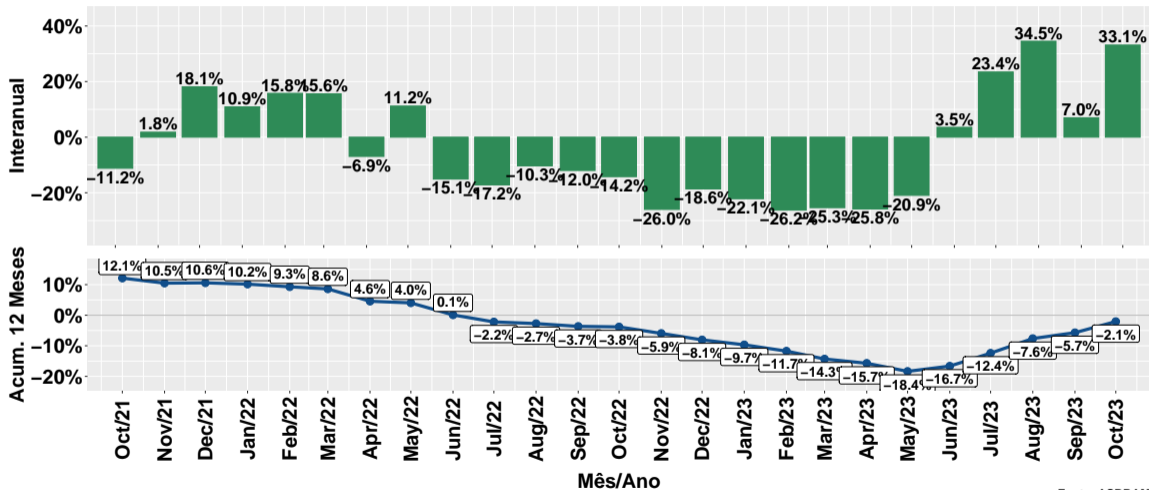
Fonte: ASBRAM

Evolução do volume de vendas por dia útil: Núcleos



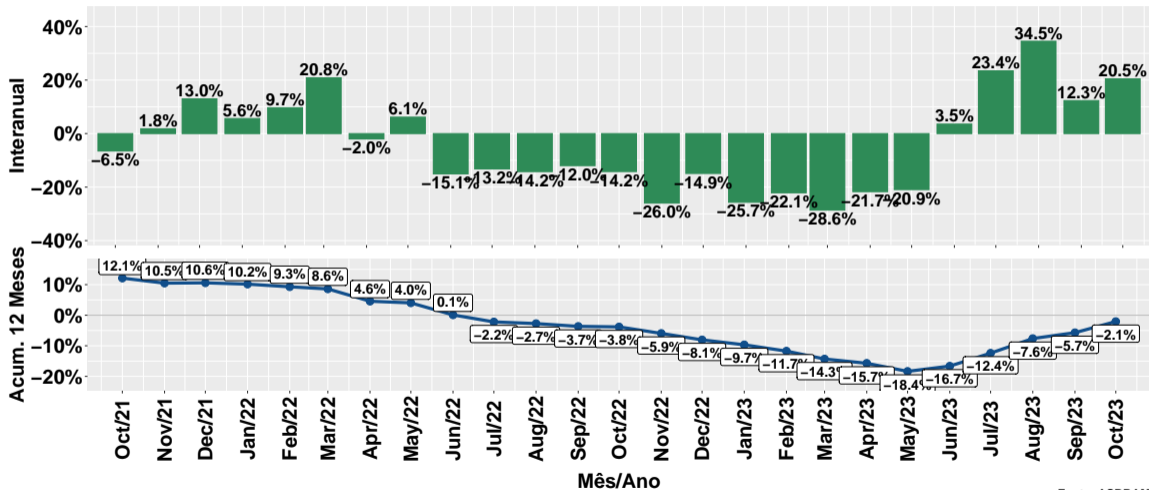
Fonte: ASBRAM

Evolução do volume de vendas: Concentrado



Fonte: ASBRAM

Evolução do volume de vendas por dia útil: Concentrado



Fonte: ASBRAM

Síntese de October/2023 (Parte 01)

	Vol. vendas ¹	Variação (%)			
		Mensal ²	Interanual ³	Acum. ano	12 meses
Pronto	78.6	9.1%	7.4%	-2.6%	-3.6%
Diluir	10.7	3.0%	13.6%	3.3%	0.6%
Ureia	6.6	22.9%	15.9%	-11.2%	-9.0%
Proteico	25.9	18.0%	-1.8%	-16.1%	-12.4%
Energetico	23.8	11.8%	14.3%	-7.9%	-6.6%
Nucleos	43.2	8.4%	12.7%	-1.4%	-1.0%
Concentrado	10.2	13.1%	33.1%	1.5%	-2.1%
Total	199.0	10.2%	9.7%	-5.2%	-4.9%

Note: Fonte: ASBRAM

¹ Em mil toneladas ² Mês/Mês anterior com ajuste sazonal ³ Mês/Mesmo mês ano anterior

Síntese de October/2023 (Parte 02)

	Contribuição (em p.p.)			
	Mensal ²	Interanual ³	Acum. ano	12 meses
Pronto	3.5	3.0	-1.0	-1.4
Diluir	0.2	0.7	0.2	0.0
Ureia	1.0	0.5	-0.6	-0.4
Proteico	2.4	-0.3	-2.6	-2.0
Energetico	1.5	1.6	-1.0	-0.8
Nucleos	1.7	2.7	-0.3	-0.2
Concentrado	0.6	1.4	0.1	-0.1
Total	10.2	9.7	-5.2	-4.9

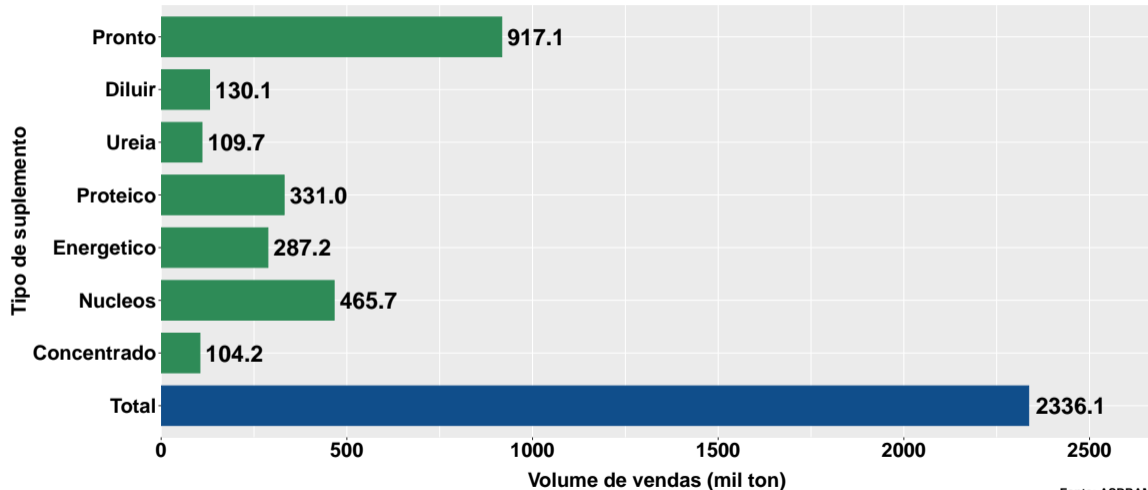
Note: Fonte: ASBRAM

¹ Em mil toneladas ² Mês/Mês anterior com ajuste sazonal ³ Mês/Mesmo mês ano anterior

Section 2

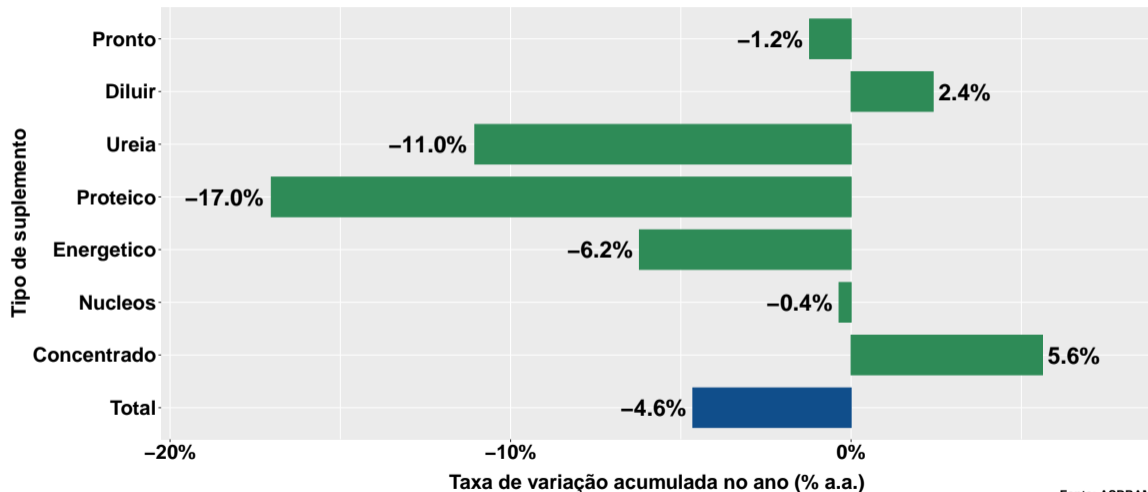
Projeções para o final de 2023

Cenário base para o volume de suplementos



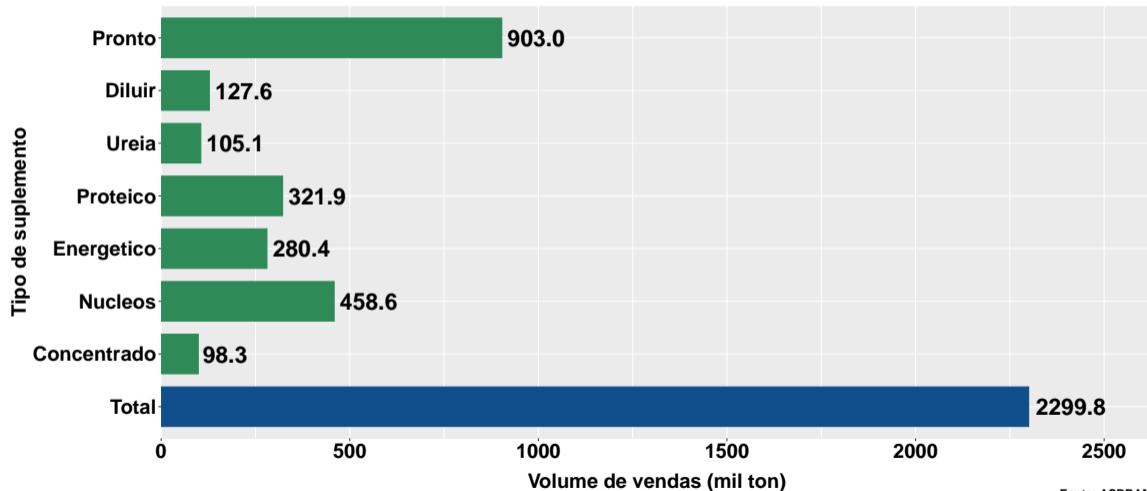
Fonte: ASBRAM

Cenário base para a var. do volume de suplementos



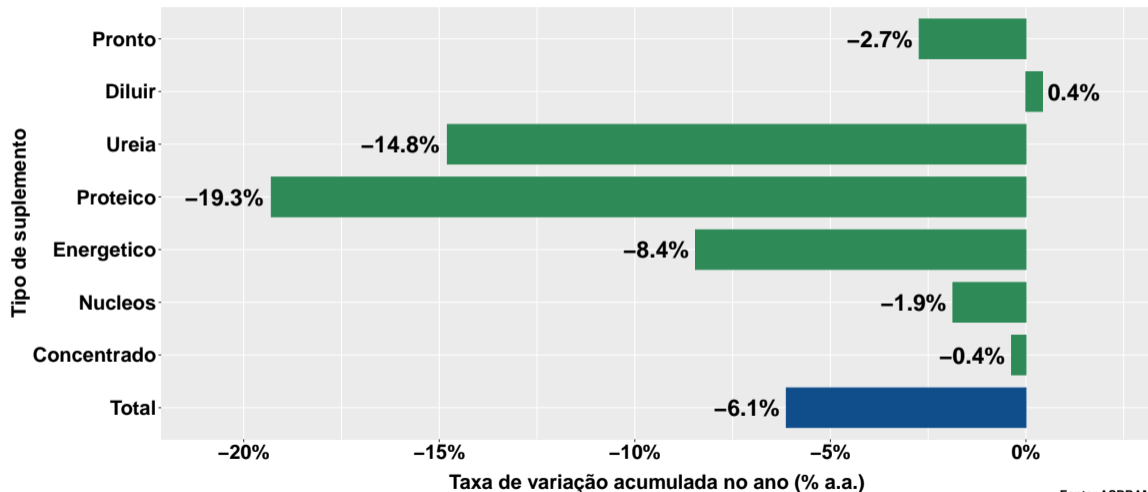
Fonte: ASBRAM

Cenário pessimista para o volume de suplementos



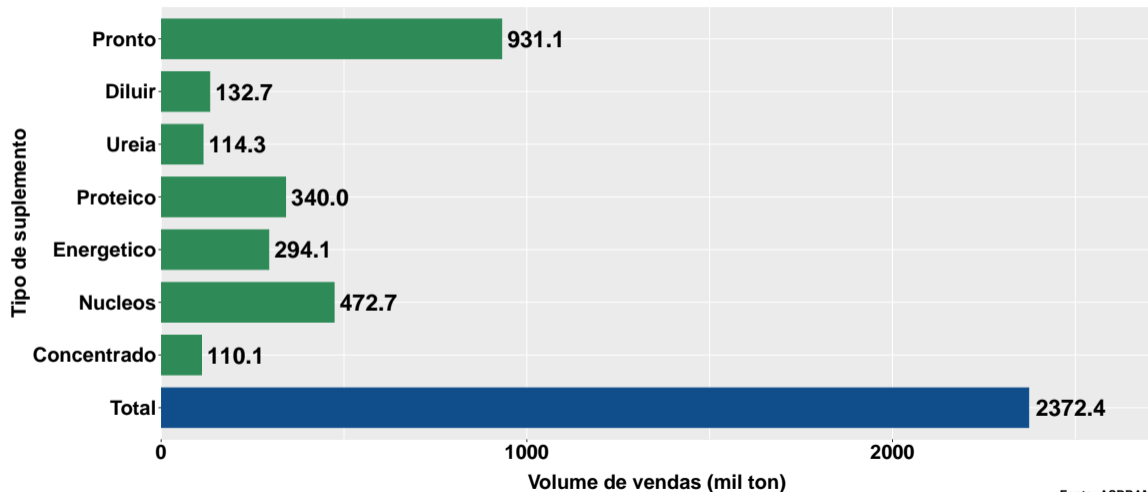
Fonte: ASBRAM

Cenário pessimista para a var. do volume de suplementos



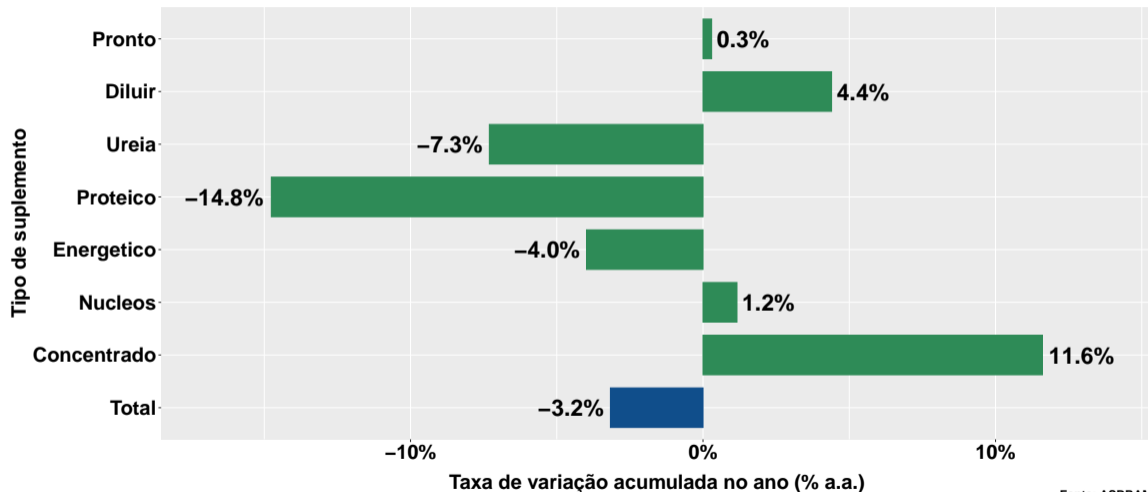
Fonte: ASBRAM

Cenário otimista para o volume de suplementos



Fonte: ASBRAM

Cenário otimista para a var. do volume de suplementos

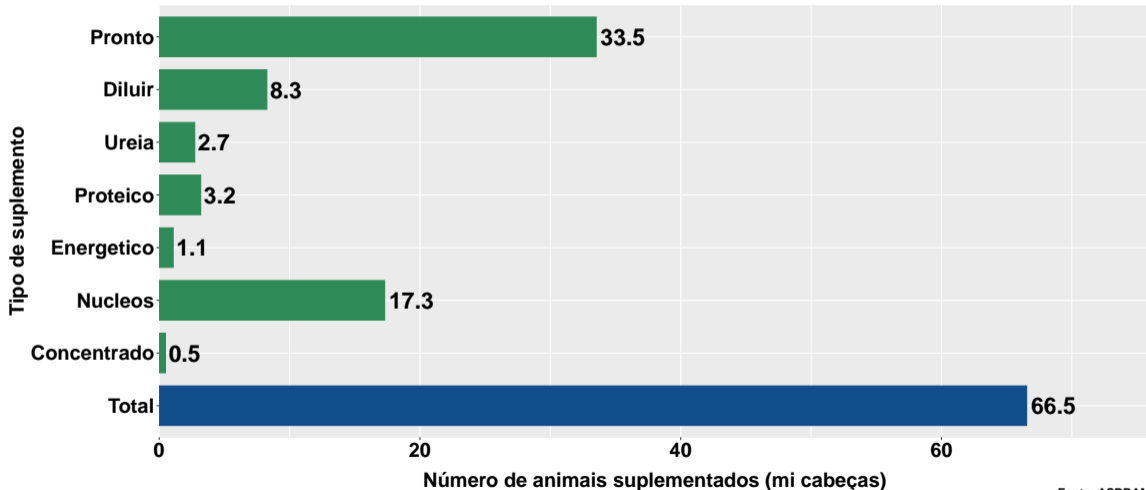


Fonte: ASBRAM

Section 3

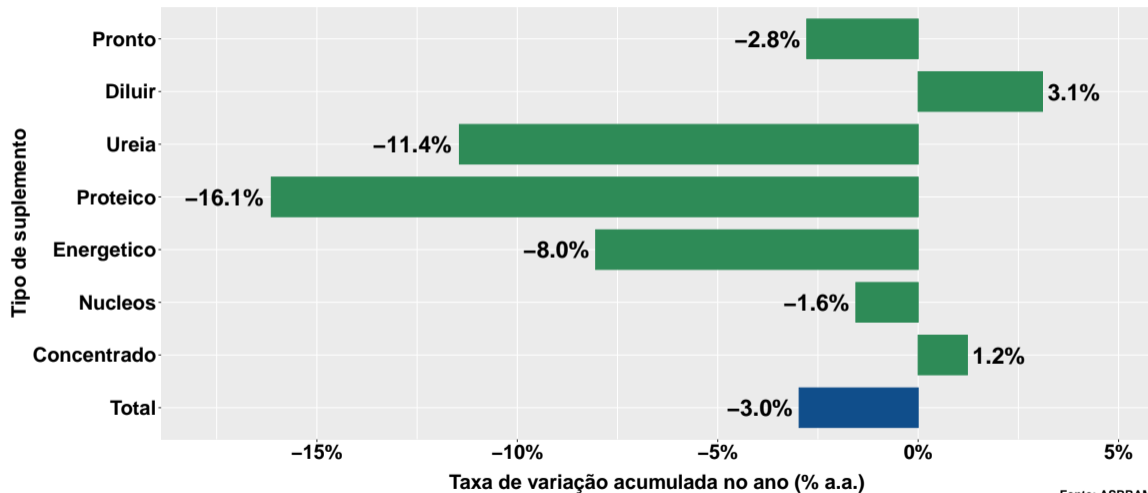
Número de animais suplementados no Brasil

Número médio de animais suplementados no ano



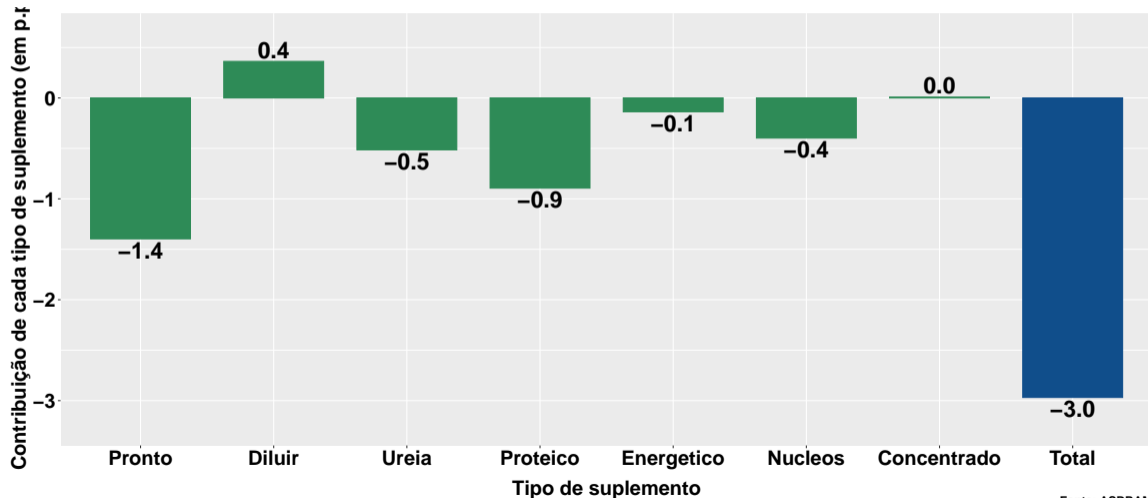
Fonte: ASBRAM

Varição do num. de animais suplementados no ano

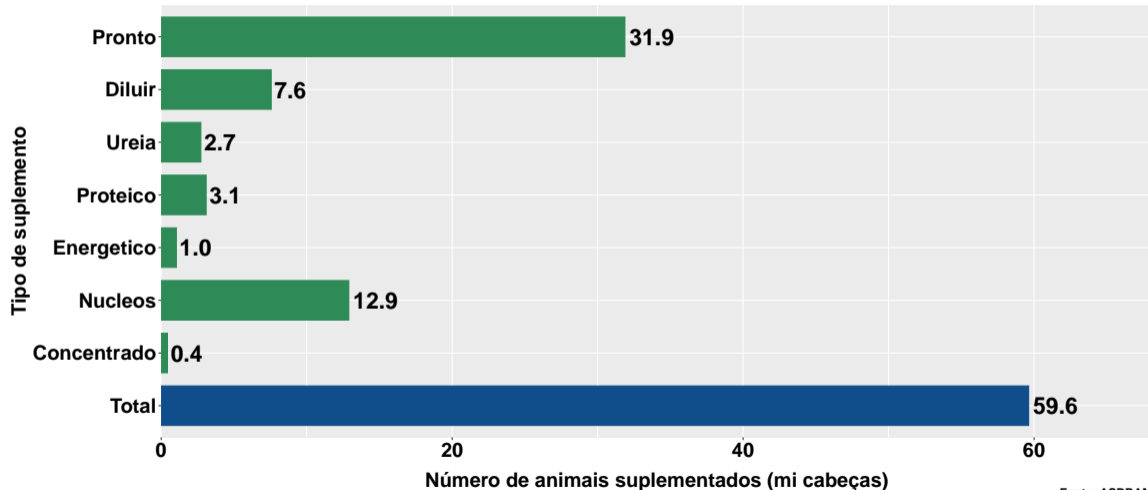


Fonte: ASBRAM

Contribuição de cada suplemento para variação do número de animais suplementados no ano

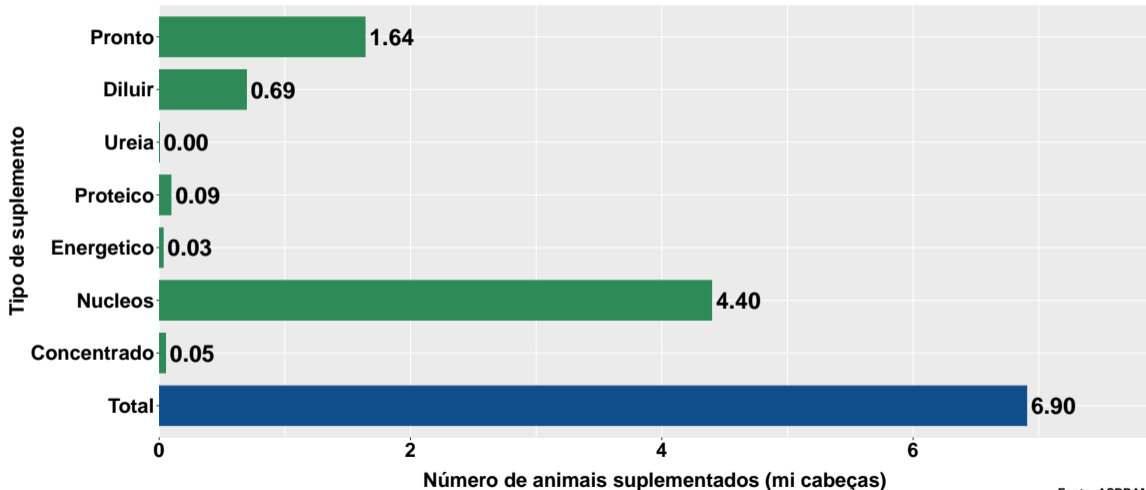


Núm. animais suplementados ano - pecuária corte



Fonte: ASBRAM

Núm. animais suplementados ano - pecuária leite

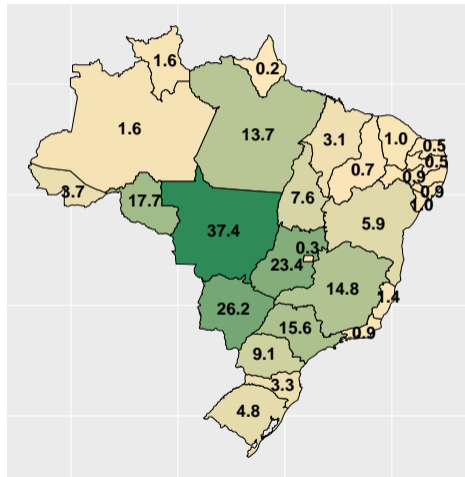


Fonte: ASBRAM

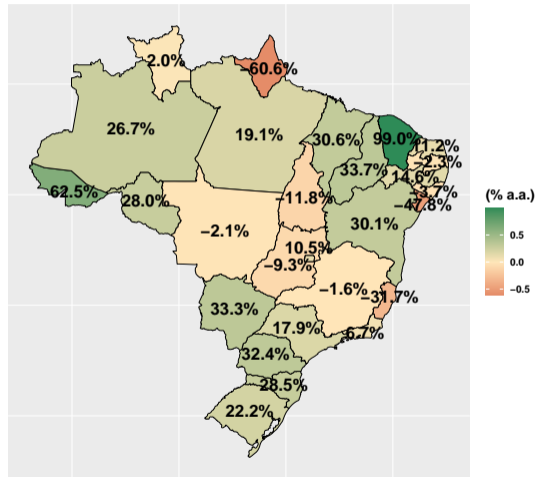
Section 4

Desempenho por Unidade da Federação (UF)

Volume total (e var. interanual) de vendas de suplementos no mês



Mil ton.

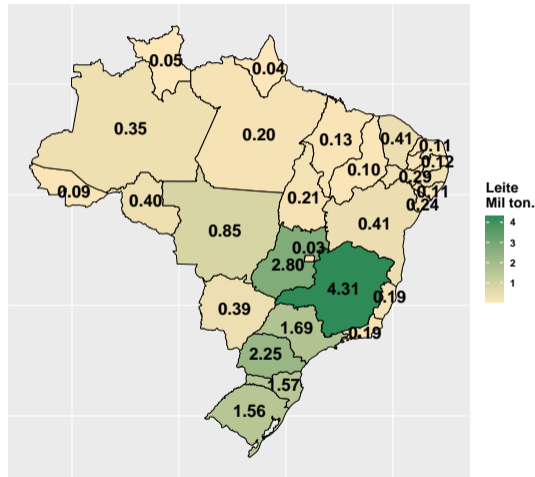
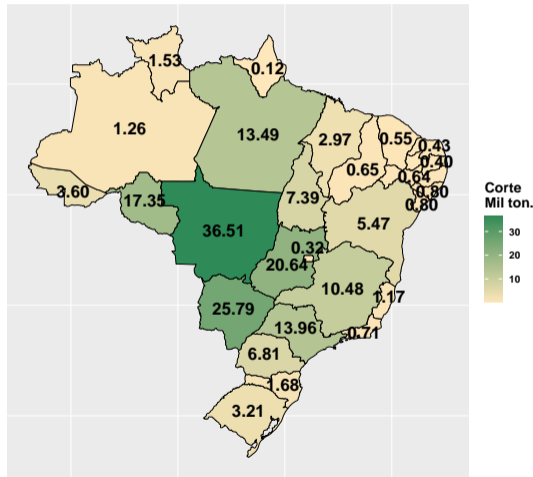


(% a.a.)



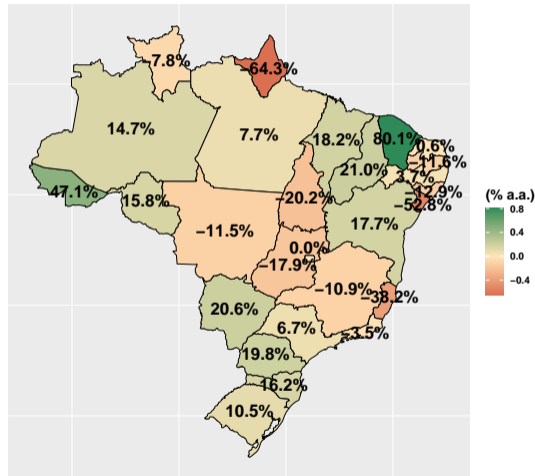
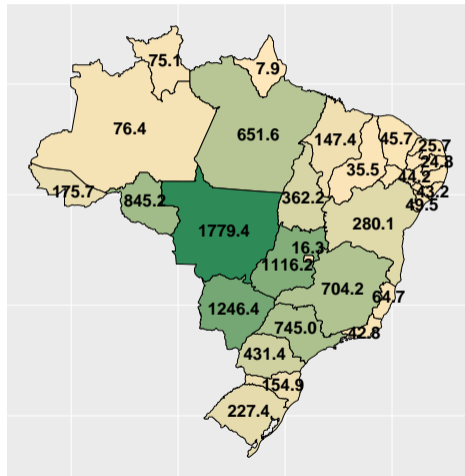
Fonte: ASBRAM

Volume total de vendas de suplementos no mês por tipo pecuária



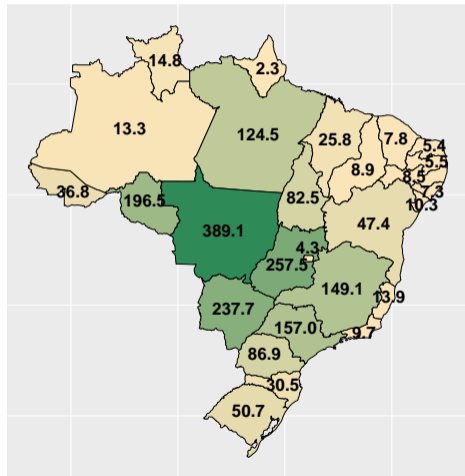
Fonte: ASBRAM

Vol. total (e var. interanual) de vendas no mês por dia útil

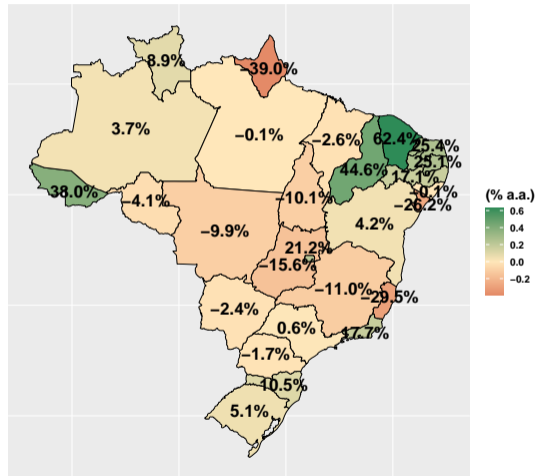


Fonte: ASBRAM

Volume total (e var.) de vendas de suplementos no ano



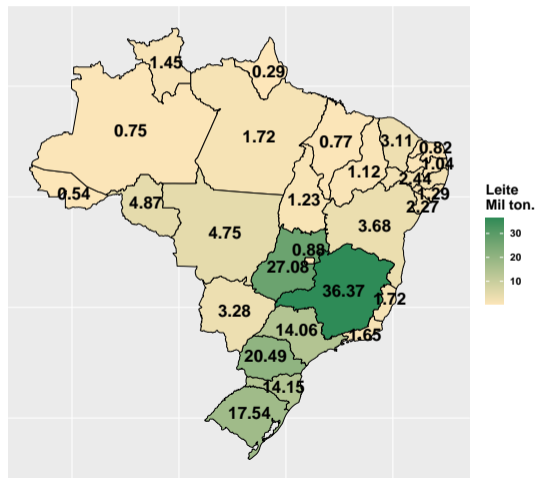
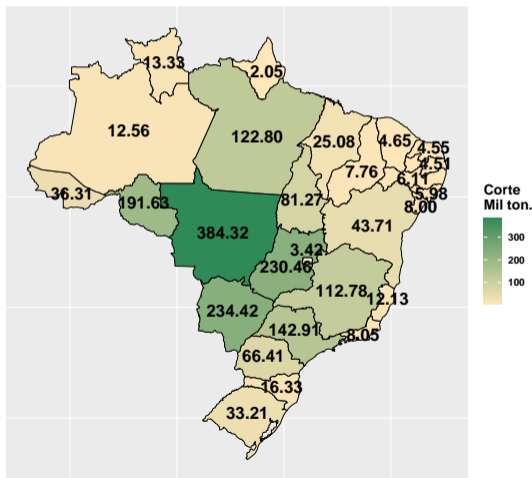
Mil ton.
300
200
100



(% a.a.)
0.6
0.4
0.2
0.0
-0.2

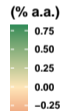
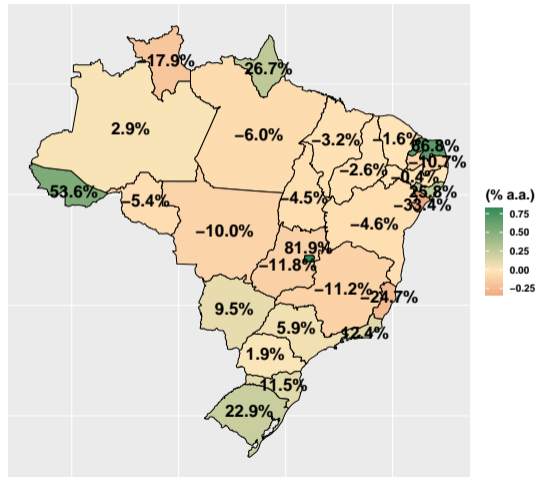
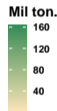
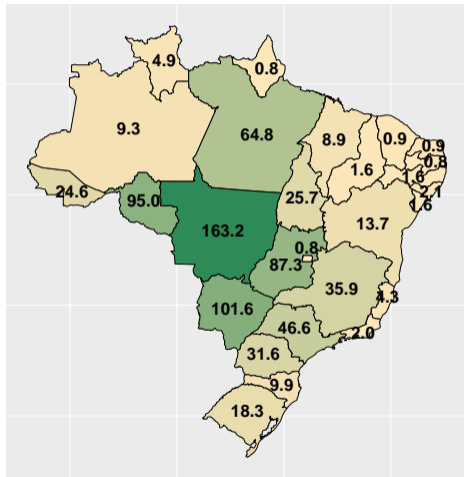
Fonte: ASBRAM

Volume total de vendas de suplementos no ano por tipo de pecuária



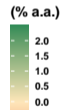
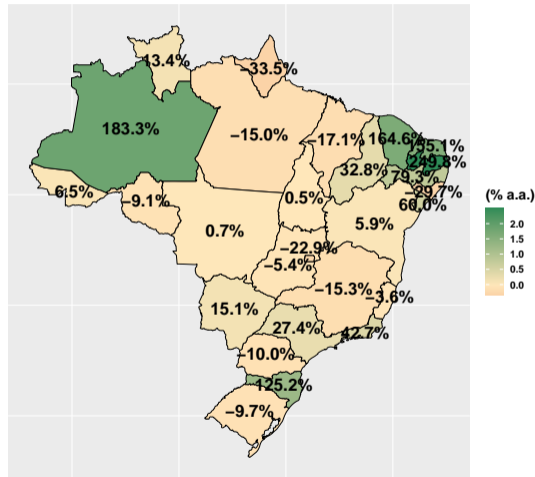
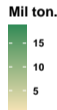
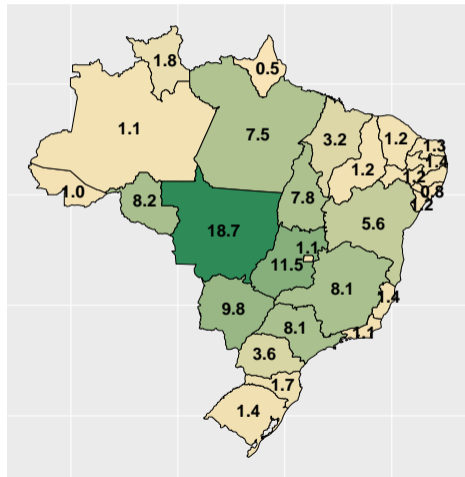
Fonte: ASBRAM

Vol. (e var.) de vendas no ano: Pronto para uso



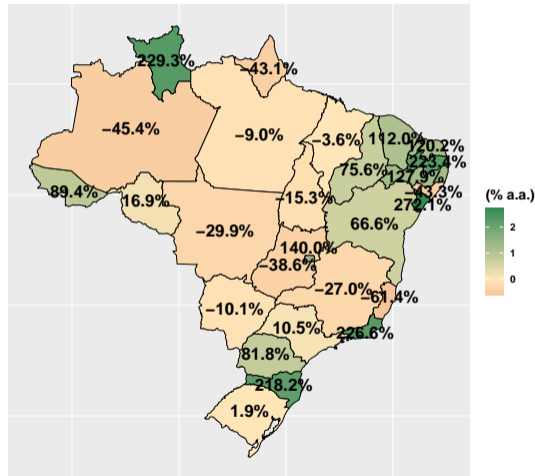
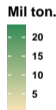
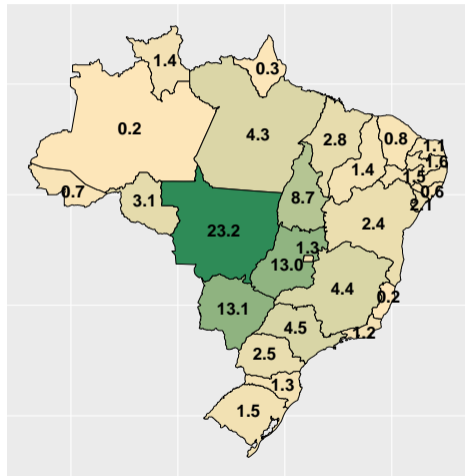
Fonte: ASBRAM

Vol. (e var.) de vendas no ano: Para diluir



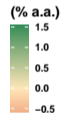
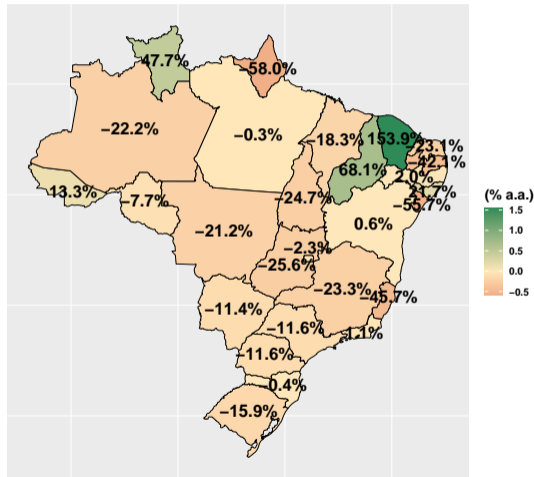
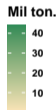
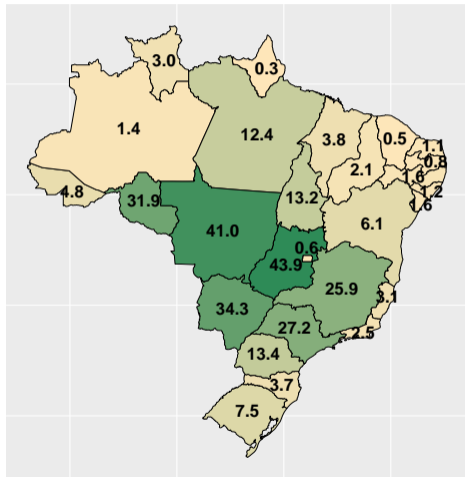
Fonte: ASBRAM

Vol. (e var.) de vendas no ano: Ureia



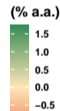
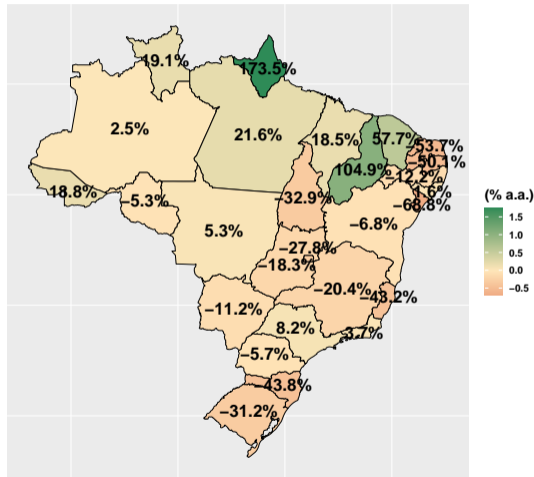
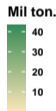
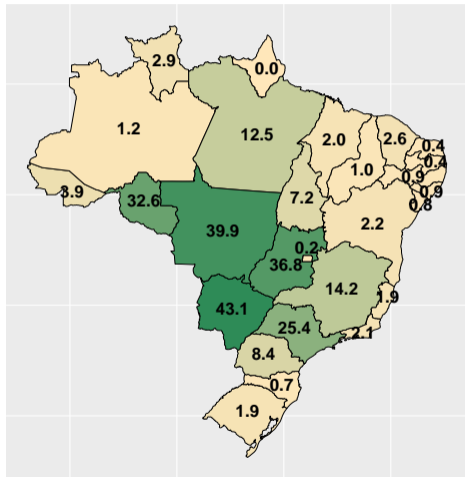
Fonte: ASBRAM

Vol. (e var.) de vendas no ano: Proteico



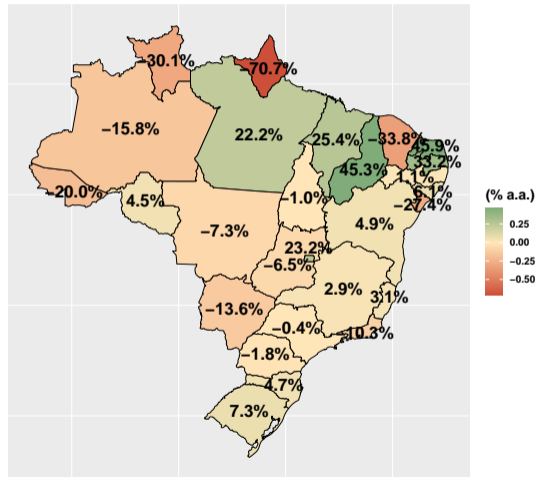
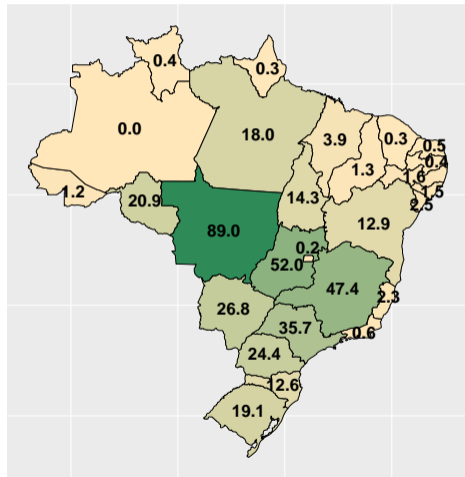
Fonte: ASBRAM

Vol. (e var.) de vendas no ano: Prot. energético



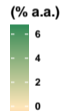
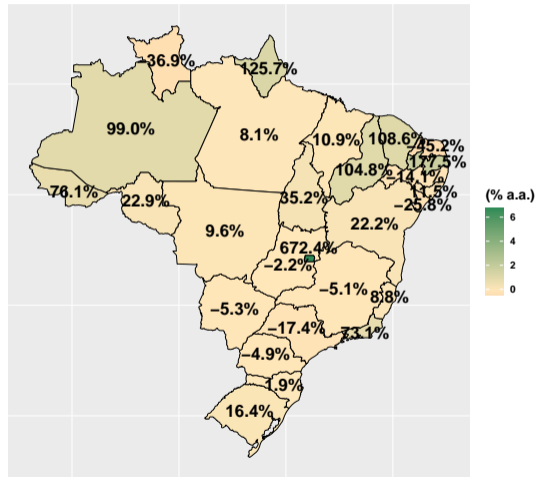
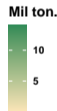
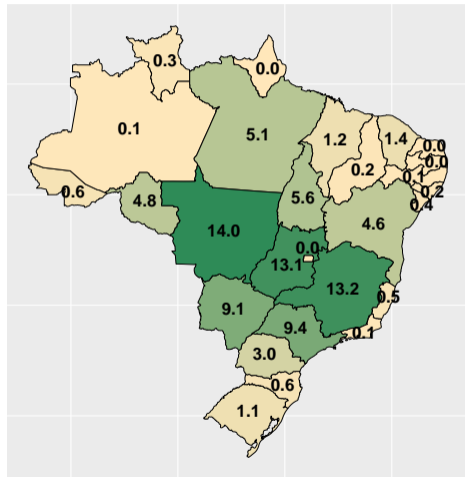
Fonte: ASBRAM

Vol. (e var.) de vendas no ano: Núcleos



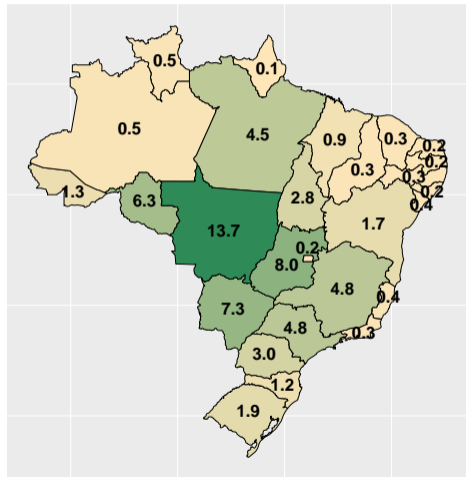
Fonte: ASBRAM

Vol. (e var.) de vendas no ano: Concentrado



Fonte: ASBRAM

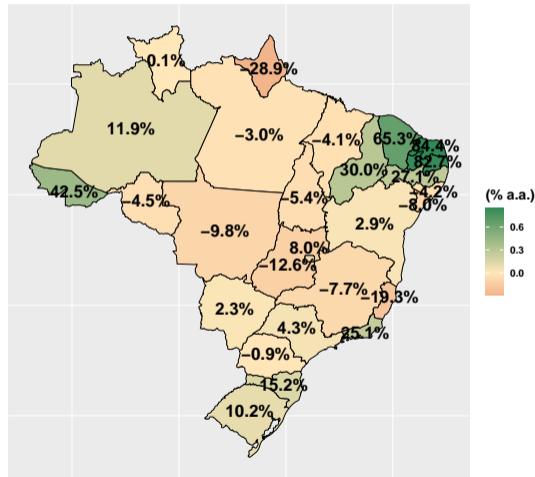
Número médio (e var.) de animais suplementados no ano



Mi cab.

10

5



(% a.a.)

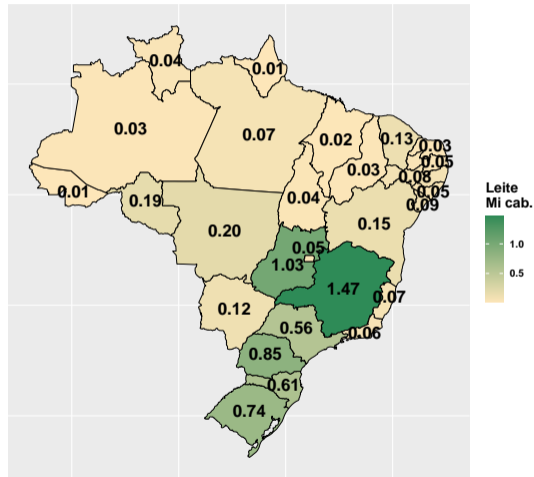
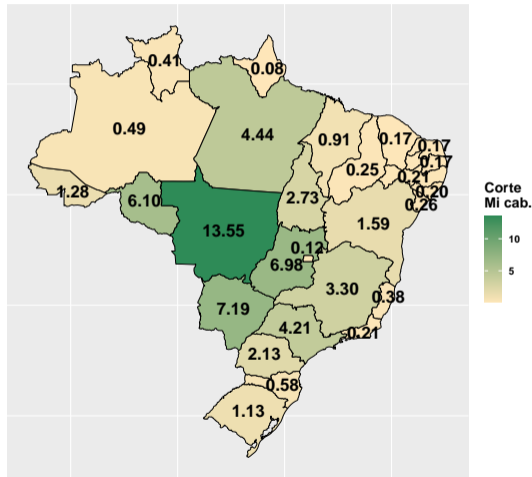
0.6

0.3

0.0

Fonte: ASBRAM

Número de animais suplementados no ano por tipo de pecuária



Fonte: ASBRAM