

# Índice ASBRAM

Desempenho no Ano de 2023

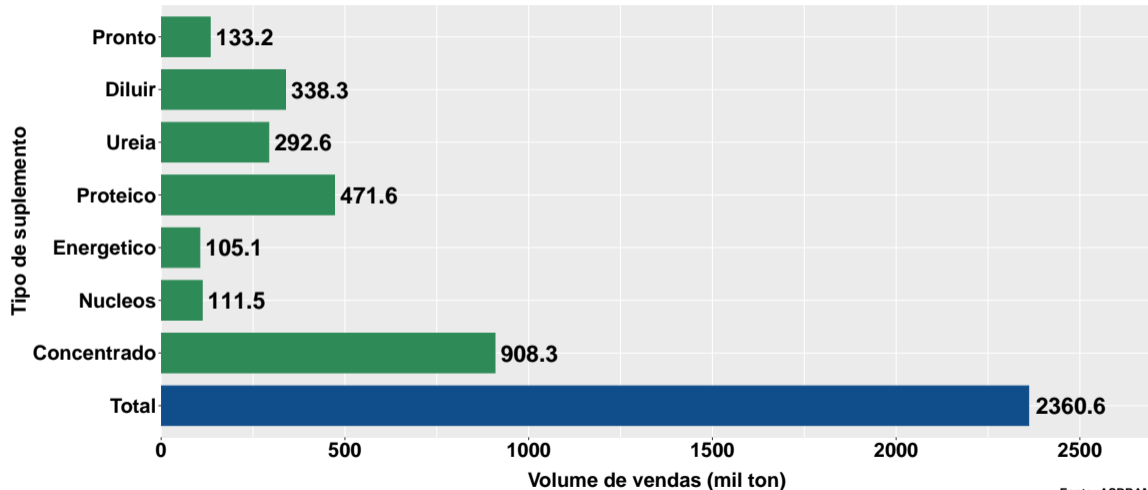
São Paulo, 17/01/2024

- 1 Volume de vendas de suplementos no Brasil
- 2 Número de animais suplementados no Brasil
- 3 Desempenho por Unidade da Federação (UF)

## Section 1

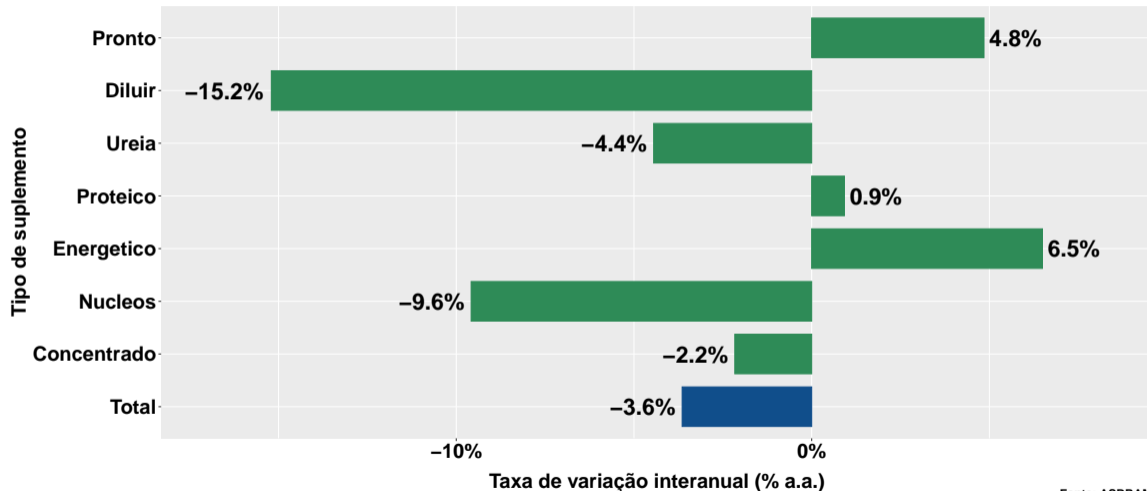
# Volume de vendas de suplementos no Brasil

# Volume de vendas no ano



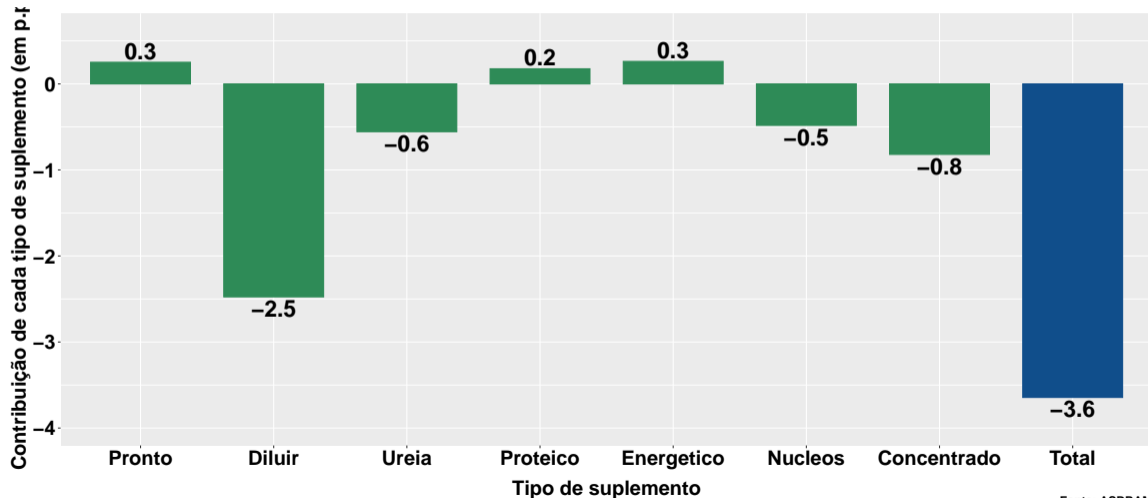
Fonte: ASBRAM

# Variação anual do volume de vendas

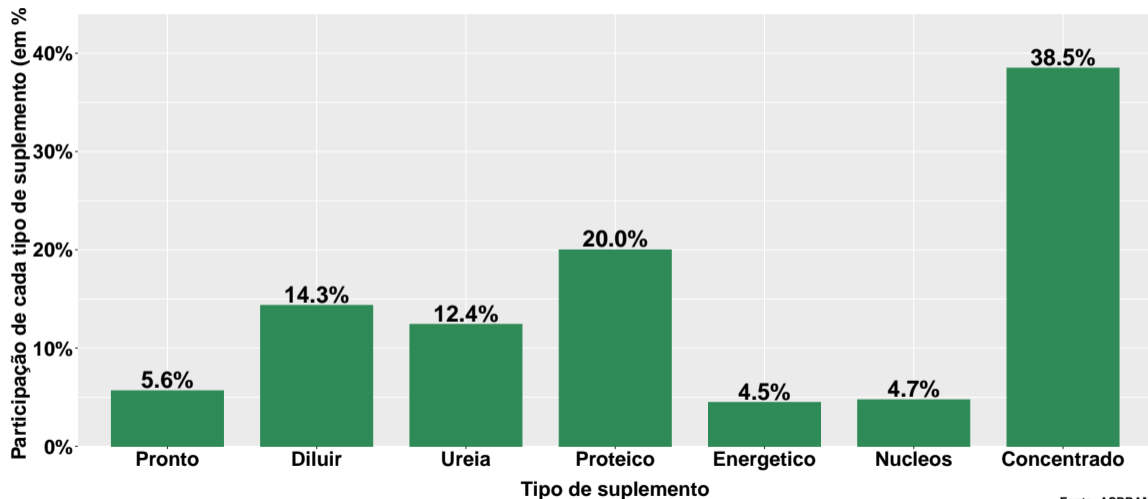


Fonte: ASBRAM

# Contribuição de cada suplemento para var. anual do volume de vendas

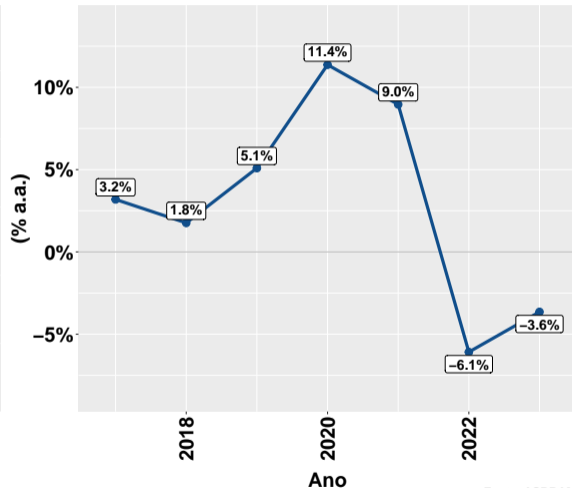
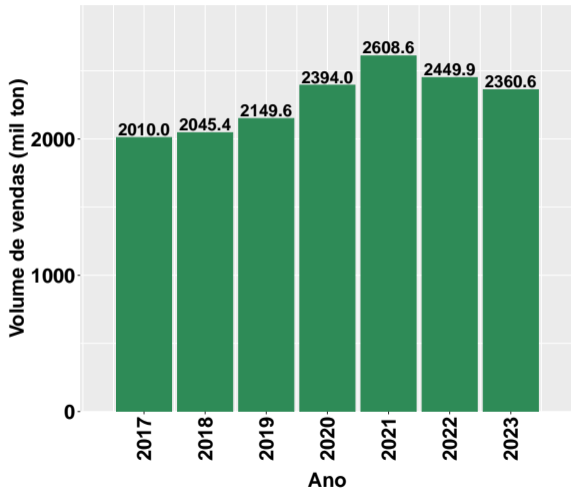


## Part. de cada suplemento no volume total de vendas no ano



Fonte: ASBRAM

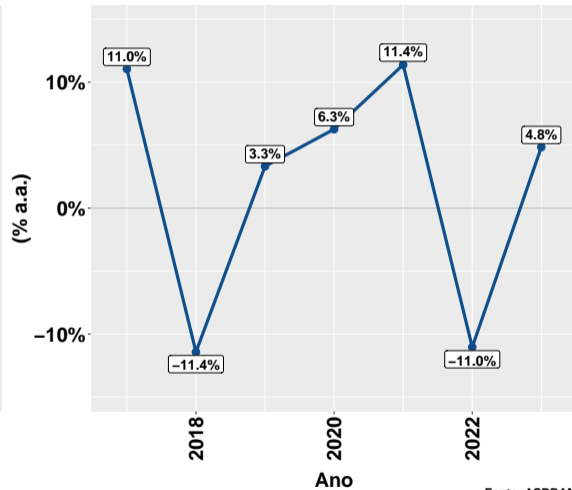
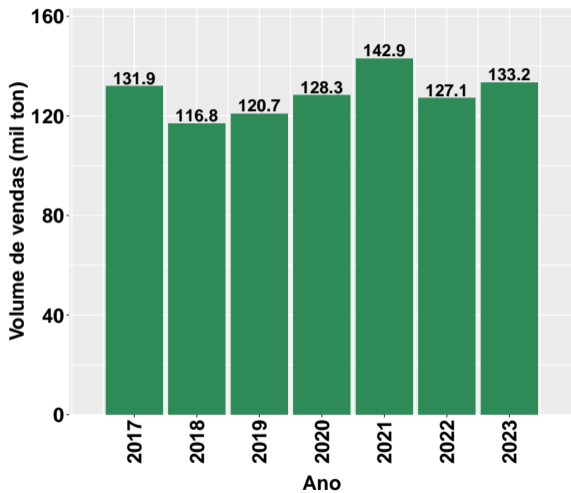
# Evolução do volume total de vendas



Fonte: ASBRAM

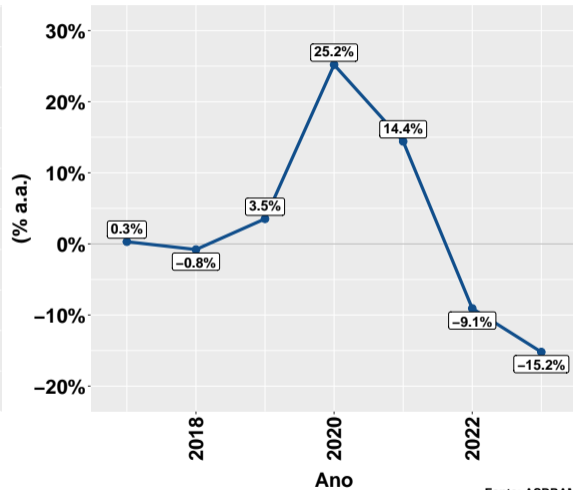
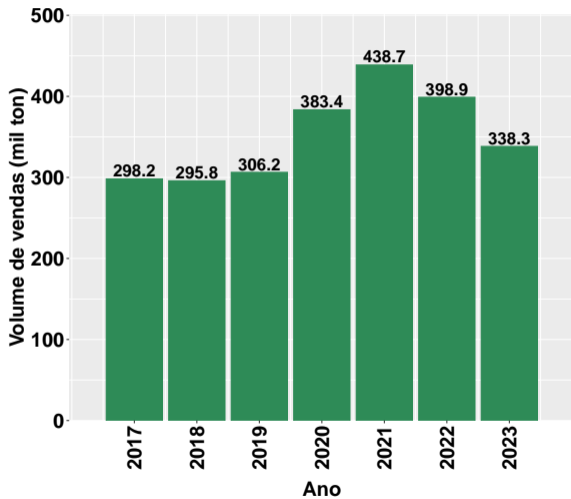


## Evolução do volume de vendas: Pronto para uso



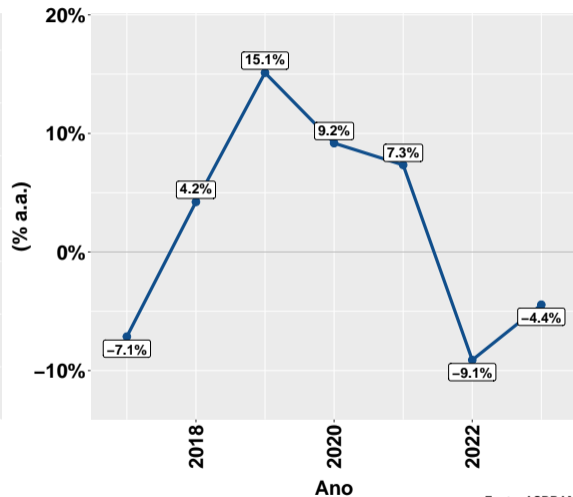
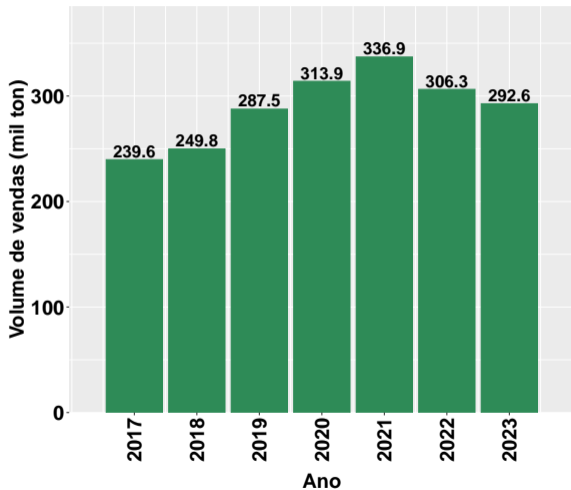
Fonte: ASBRAM

## Evolução do volume de vendas: Para diluir



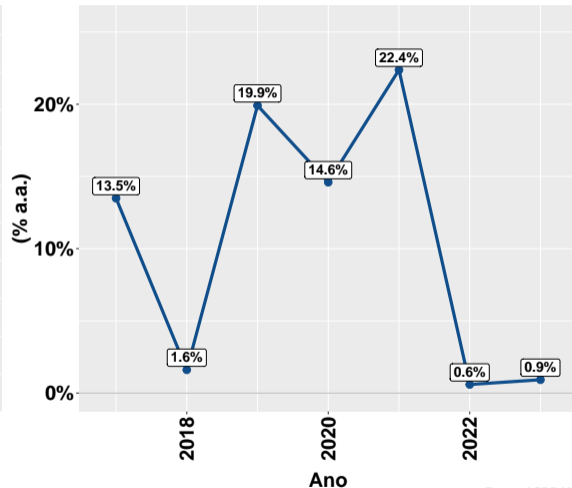
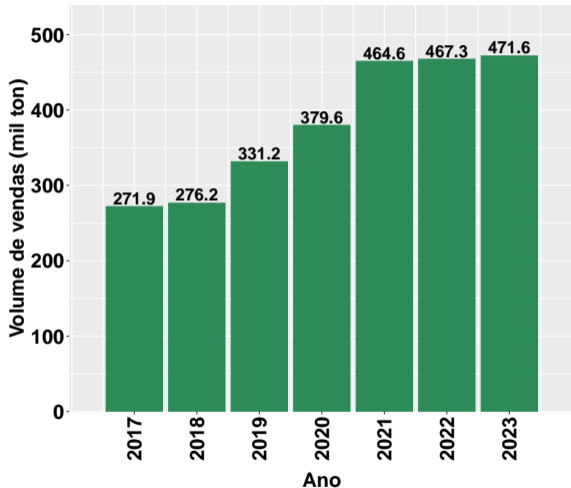
Fonte: ASBRAM

# Evolução do volume de vendas: Ureia



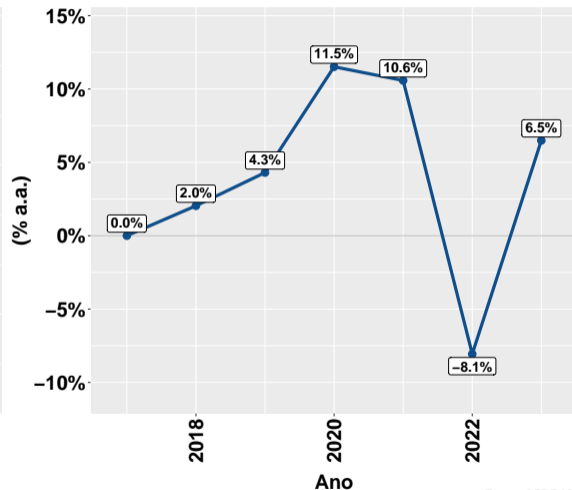
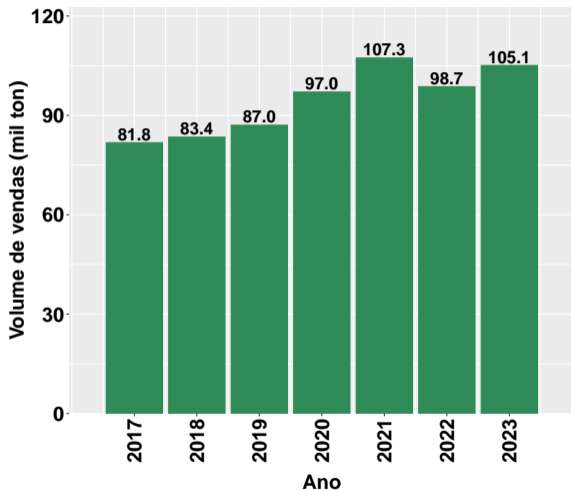
Fonte: ASBRAM

# Evolução do volume de vendas: Proteico



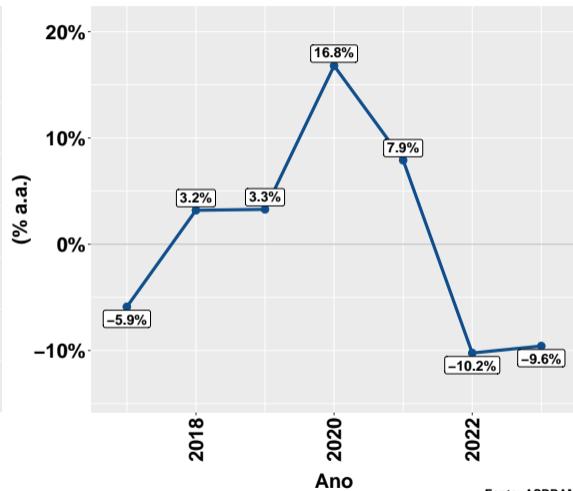
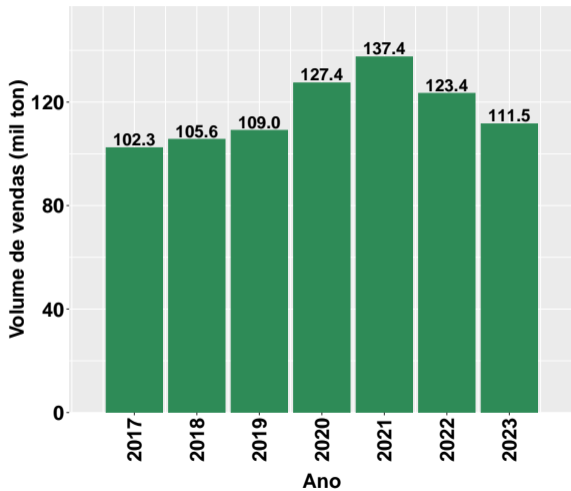
Fonte: ASBRAM

## Evolução do volume de vendas: Prot. energético



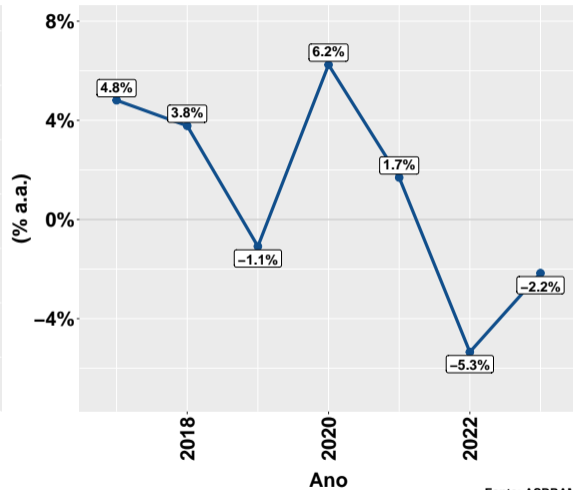
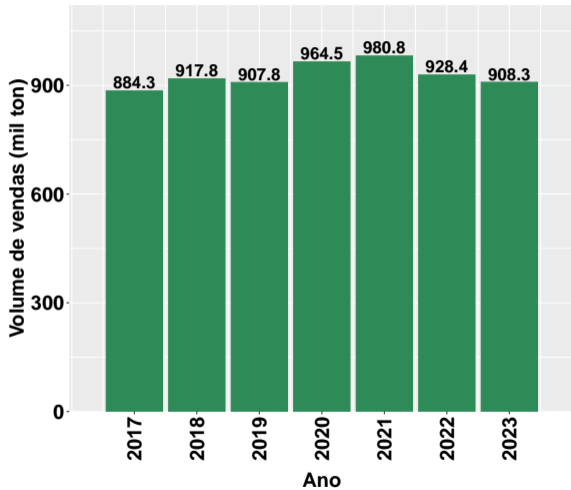
Fonte: ASBRAM

# Evolução do volume de vendas: Núcleos



Fonte: ASBRAM

## Evolução do volume de vendas: Concentrado



Fonte: ASBRAM

# Síntese de 2023

	Volume de vendas no ano <sup>1</sup>		Var. Anual <sup>2</sup>	Contribuição <sup>3</sup>
	2022	2023		
Pronto	127.1	133.2	4.8%	0.3
Diluir	398.9	338.3	-15.2%	-2.5
Ureia	306.3	292.6	-4.4%	-0.6
Proteico	467.3	471.6	0.9%	0.2
Energetico	98.7	105.1	6.5%	0.3
Nucleos	123.4	111.5	-9.6%	-0.5
Concentrado	928.4	908.3	-2.2%	-0.8
<b>Total</b>	<b>2449.9</b>	<b>2360.6</b>	<b>-3.6%</b>	<b>-3.6</b>

Note: Fonte: ASBRAM

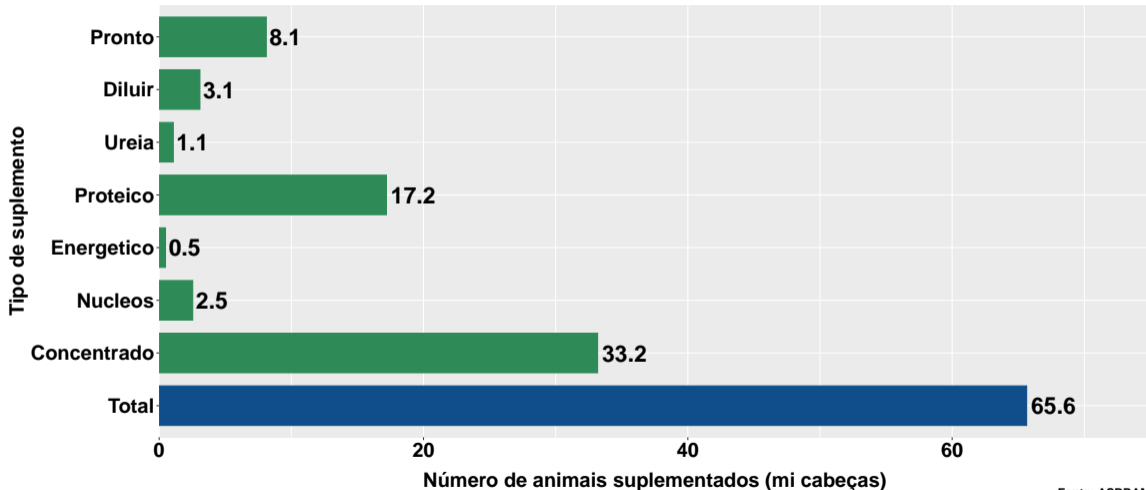
<sup>1</sup> Em mil toneladas <sup>2</sup> Ano/ano anterior <sup>3</sup> Em pontos percentuais



## Section 2

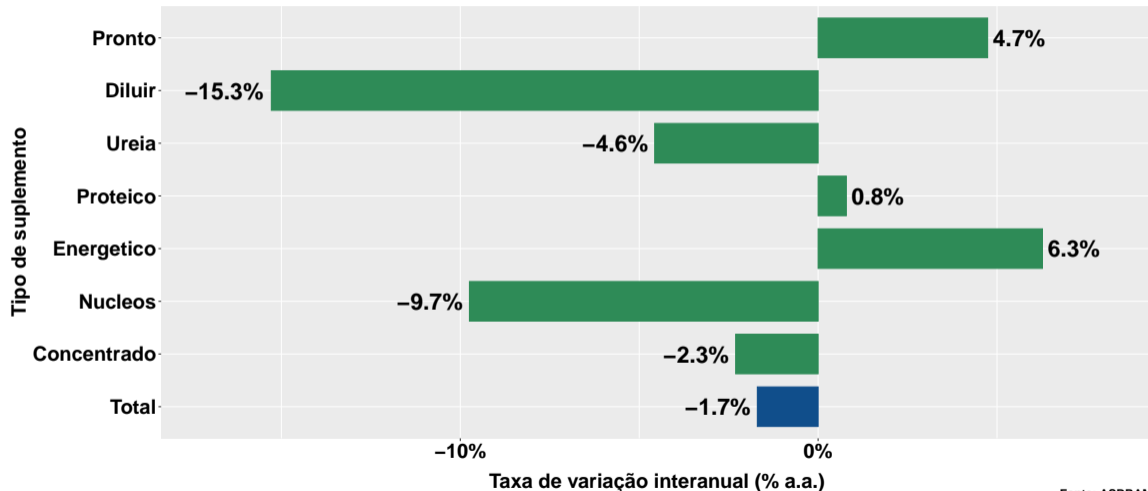
# Número de animais suplementados no Brasil

# Número de animais suplementados



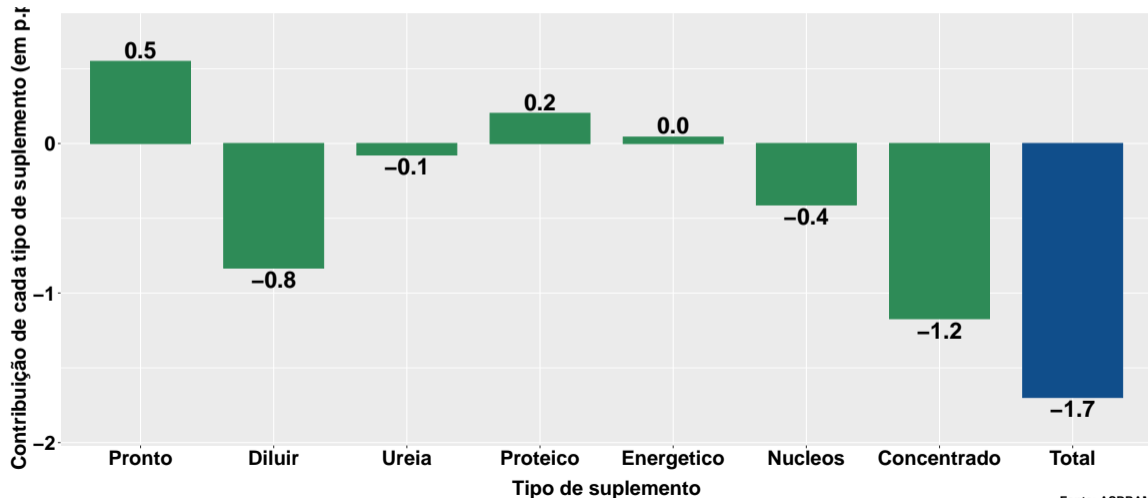
Fonte: ASBRAM

## Var. anual do num. de animais suplementados

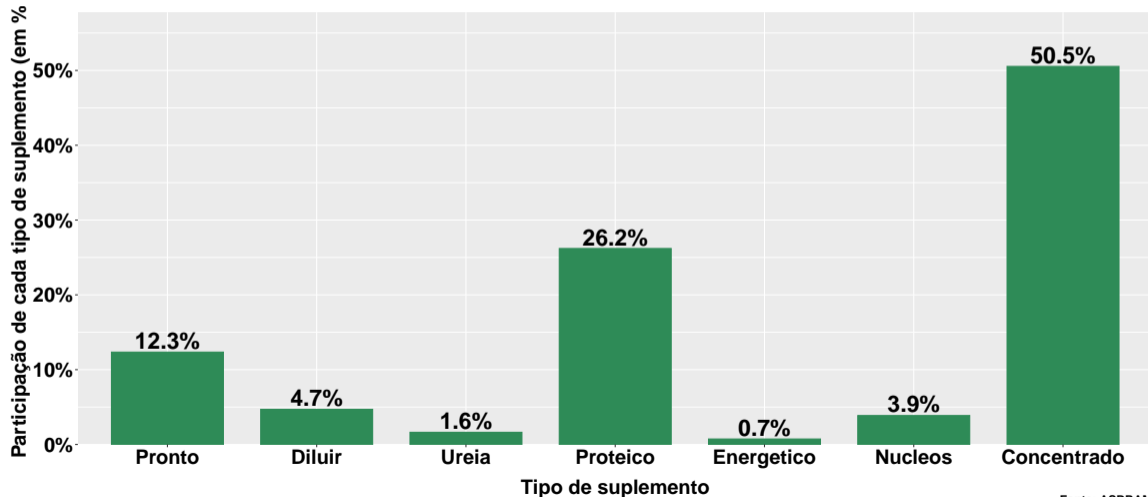


Fonte: ASBRAM

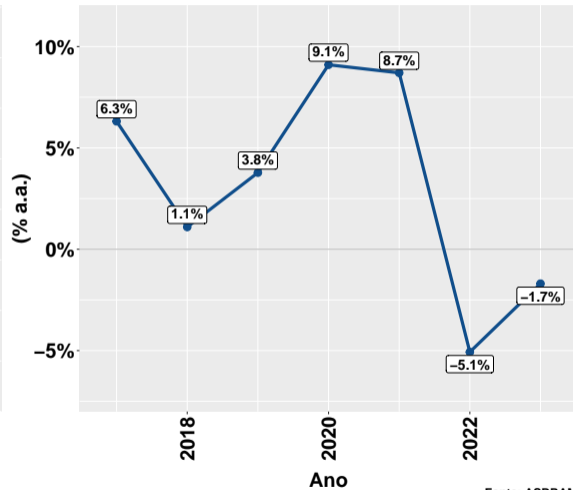
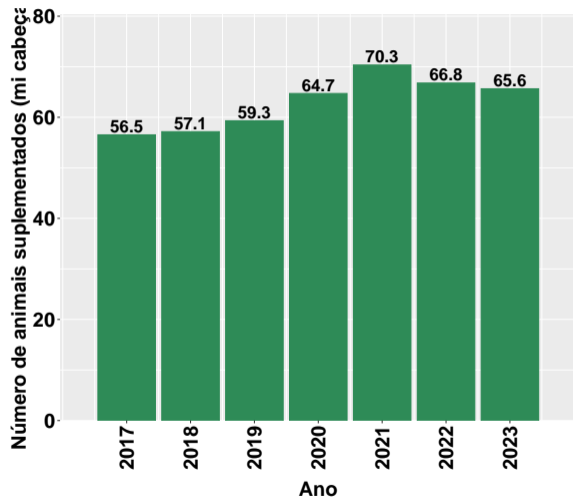
## Contribuição de cada suplemento para variação anual do número de animais suplementados



## Participação de cada suplemento no número de animais suplementados no ano



# Evolução do número de animais suplementados

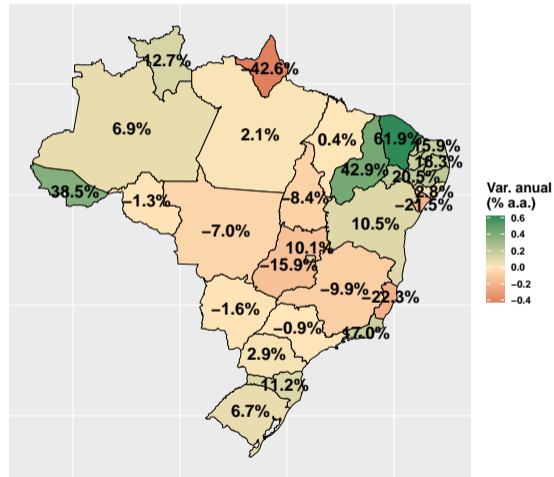
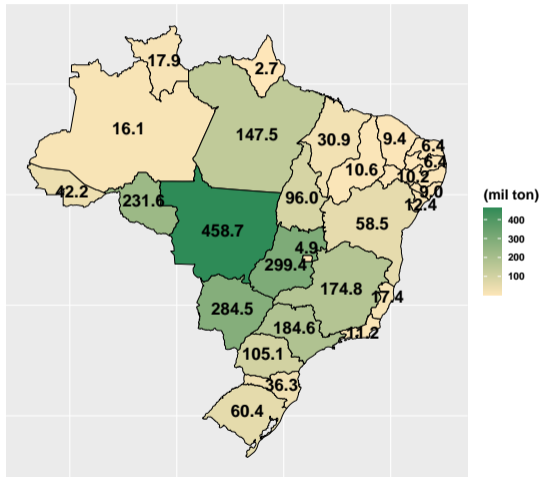


Fonte: ASBRAM

## Section 3

# Desempenho por Unidade da Federação (UF)

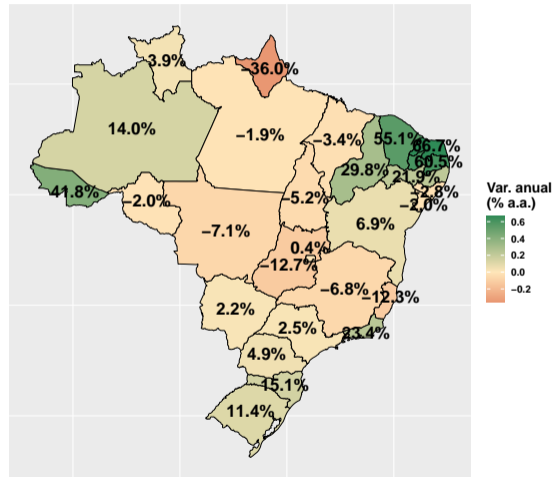
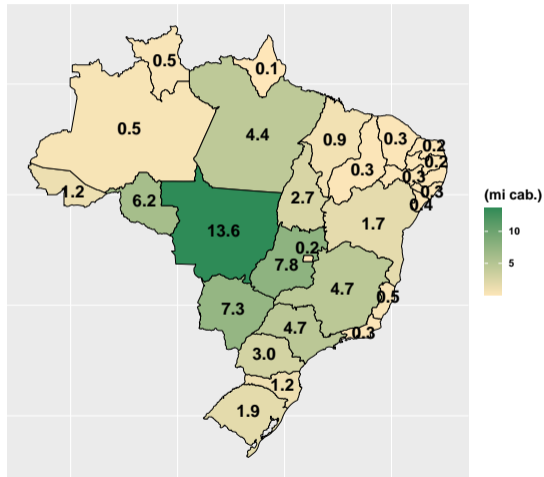
# Volume total de vendas de suplementos no ano



Fonte: ASBRAM



# Número de animais suplementados no ano



Fonte: ASBRAM